

CLARENCE BROWN THEATRE

AT THE UNIVERSITY OF TENNESSEE

YOU CAN'T TAKE IT WITH YOU

By MOSS HART and GEORGE S. KAUFMAN

APR 15 - MAY 03

Directed by
Melissa Rain Anderson ★





National reach. Local roots.

We're grateful to be a part of this community and to celebrate the countless ways the Clarence Brown Theatre brings people together.



**FIRST
HORIZON
BANK**

firsthorizon.com



©2025 First Horizon Bank. Member FDIC.

CLARENCE BROWN THEATRE

AT THE UNIVERSITY OF TENNESSEE

presents

YOU CAN'T TAKE IT WITH YOU

By MOSS HART and GEORGE S. KAUFMAN

Director **Melissa Rain Anderson***

Co Scenic Designers

Alondra Castro
Kenneth Martin♦

Costume Designer

Lauren T. Roark♦

Lighting Designer

Miguel Santiago

Sound Designer

Chance Beck

Co Voice and Text Directors

Katie Cunningham
Sammy Pontello

Production Stage Manager

Patrick Lanczki*

Assistant Stage Manager

Mayson Knipp*

Managing Director

Tom Cervone

Production Manager

Susan L. McMillan

You Can't Take It With You is presented by arrangement with Concord Theatricals on behalf of Samuel French, Inc. www.concordtheatricals.com

The video and/or audio recording of this performance by any means whatsoever is strictly prohibited.

 **FIRST HORIZON BANK** SM

 **SHUBERT**
FOUNDATION INC.

 Arts & Culture **Alliance**

Knox County
Tourism Consortium

Julie Howard

 TENNESSEE
ARTS
COMMISSION

10 the
WBIR

knox news.
PART OF THE iFM TODAY NETWORK

east tennessee  **PBS**

B97.5
Your Life. Your Music.

91.9 fm
WUOT

WDYX
89.9 fm
THE GREAT ESCAPE



 ★ The Director is a member of the Stage Directors and Choreographers Society, a national theatrical labor union.



♦ The Designers in LORT Theatres are represented by **United Scenic Artists**, Local USA-829 of the IATSE.



* The stage manager appears through the courtesy of **Actors' Equity Association**, the Union of Professional Actors and Stage Managers in the United States.

Cover photo: Mia Inez Hayes and Clay Cooper; by Shawn Poynter

FROM THE DIRECTOR



“How many of us would be willing to settle when we’re young for what we eventually get? All those plans we make...what happens to them? It’s only a handful of the lucky ones who can look back and say they even came close”

Working on this play, I can honestly say, is one of the bright spots in a life in the theater. We have had an incredible journey creating this wacky, wonderful family for you. We have leaned into this material with our full hearts, relishing the language, the spirit and the joy that this play elicits.

You Can't Take it With You is a Pulitzer Prize winner and considered a true American Classic. It stands the test of time with its specific rhythms and carefully drawn group of individuals. This family loves easily and is easily loved. They welcome all into their home and let people live in their own unique way. They remain curious about life, family and love. It may seem like chaos, but it's carefully curated and filled with heart. I wonder what the world would look like if more of us lived like they do... We welcome you into the family - enjoy the ride!

~ **Melissa Rain Anderson**

INSIDE REHEARSAL



Cast/Ensemble in rehearsal for *You Can't Take It With You*.

THE CAST

Penelope Sycamore.....	Shinnerrie Jackson *
Essie.....	Gabrielle Fernandes *
Rheba / <i>US Essie</i>	Amanda King
Paul Sycamore.....	David Brian Alley *
Mr. De Pinna.....	Doug James
Ed.....	Steve Sherman *
Donald / <i>US Boris Kolenkhov</i>	Parker Rawlins
Martin Vanderhof.....	Terry Weber *
Alice.....	Yashashvi Choudhary *
Henderson.....	Izaiah Ramirez *
Tony Kirby.....	Clay Cooper *
Boris Kolenkhov.....	Jed Diamond *
Gay Wellington / <i>US Penelope Sycamore</i>	CortneyJo Sandidge
Mr. Kirby.....	Jim Poulos *
Mrs. Kirby.....	Laura Beth Wells *
Government-Man #1 / <i>US Tony Kirby</i>	Calvin Flowers
Government-Man #2 / <i>US Alice</i>	Elise Thayn *
Government-Man #3.....	Gideon Rainey
Olga.....	Carol Mayo Jenkins *
<i>US Rheba, Olga</i>	Alana Mara
<i>US Ed, Donald</i>	Jackson Neilson
<i>US Henderson, Mr. Kirby</i>	Michael Higdon
<i>US Gay Wellington, Mrs. Kirby</i>	Jennifer Pagnard

RUN TIME:

2 hours with one 20-minute intermission

ADVISORIES:

This production contains sudden loud noises and theatrical smoke.



* The actors appear through the courtesy of Actors' Equity Association, the Union of Professional Actors and Stage Managers in the United States.

After the show, please take a moment to fill out a brief 5-minute survey tiny.utk.edu/cbtsurvey about your experiences at **You Can't Take It With You**. Your feedback helps us better know our audiences, offer more programming, and increases funding opportunities for the CBT. Thank you in advance!



ABOUT THE AUTHORS

MOSS HART (1904-1961) began his career as a playwright, director and producer in 1930 when, with George S. Kaufman, he wrote *Once in a Lifetime*. Subsequent Kaufman and Hart successes include *Merrily We Roll Along*, *You Can't Take It With You* and *The Man Who Came To Dinner*, among others. In collaboration with Irving Berlin, he wrote *Face the Music* and *As Thousands Cheer*. In solo efforts, he scored personal triumphs with *Jubilee*, *The Great Waltz*, *Light Up the Sky* and *Lady in the Dark*, which he also directed. His directorial credits include *My Fair Lady*, *Camelot* and *Winged Victory*, which he also wrote. Among his screen credits are *A Star Is Born* (for Judy Garland), *Gentleman's Agreement*, and *Hans Christian Anderson* (for Danny Kaye). His autobiography, *Act One*, topped the best-seller list for 40 weeks.



GEORGE S. KAUFMAN (1889-1961) During his early career as a reporter and drama critic, he began to write for the theatre. For 40 years, beginning in 1921 with the production of *Dulcy*, there was rarely a year without a Kaufman play — usually written in collaboration. His only full-length plays written alone were *The Butter and Egg Man* and *Hollywood Pinafore*. A master craftsman of the theatre with a keen eye for comedy and satire, Kaufman was frequently brought in by producers to transform the script of a promising play into that of a hit. He was equally adept in almost all varieties of theatre — social satire, as in *Dinner At Eight* (with Edna

Ferber); revues, as in *The Band Wagon* (with Howard Dietz and Arthur Schwartz); musicals, as in the 1931 Pulitzer Prize-winning *Of Thee I Sing* (with Morrie Ryskind and George and Ira Gershwin), *I'd Rather Be Right* (with Moss Hart, Richard Rodgers and Lorenz Hart) and *The Cocoanuts* (with Irving Berlin); and comedies, such as *Once In A Lifetime*, *The Man Who Came To Dinner*, and the 1936 Pulitzer Prize-winning *You Can't Take It With You* (all written with Moss Hart), *The Royal Family* (with Edna Ferber) and *The Solid Gold Cadillac* (with Howard Teichmann). With Morrie Ryskind, he also wrote the screenplays for the Marx Brothers' films *The Cocoanuts*, *Animal Crackers* and *A Night at the Opera*. Mr. Kaufman also directed some two dozen of his own plays plus *The Front Page*, *Of Mice and Men*, *My Sister Eileen* and *Guys And Dolls*. Mr. Kaufman died in New York City in 1961 at the age of 71.

THROUGH THE YEARS

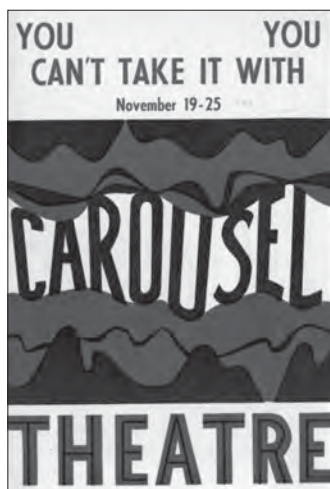
One of the most popular and successful plays of the 20th century, *You Can't Take It With You* is Kaufman and Hart's hilarious, delightful portrait of a charmingly eccentric family. *You Can't Take It With You* opened on Broadway at the Booth Theatre on December 14, 1936. A smash hit, the show ran for 838 performances and returned to Broadway five times, most recently in 2014. That production, directed by Scott Ellis, earned the Tony Award for Best Featured Actress for Annaleigh Ashford as Essie.

ACCOLADES



DID YOU KNOW?

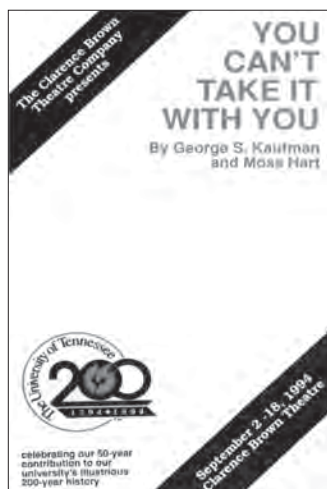
This is the fourth time the Clarence Brown Theatre Company has produced *You Can't Take It With You*, the first being our production in 1952 that was performed in the Carousel Theatre.



1952



1974



1994

CBT Playbills from past productions on UT Knoxville's campus.



KNOXVILLE MUSEUM OF ART



knoxart.org



[Learn More](#)

The Knoxville Museum of Art celebrates East Tennessee's rich, diverse visual culture and its connections to the wider currents of world art.

In the decades since the museum opened, its programming has evolved to become increasingly focused on the rich culture, old and new, of the Southern Appalachians. *Higher Ground: A Century of the Visual Arts in East Tennessee*, a permanent exhibition of works from the mid-nineteenth to the late-twentieth century, spotlights the compelling and heretofore largely unknown visual arts legacy of Knoxville and the region.

Each year, the museum holds more and more works by artists with ties to East Tennessee, including Knoxville natives Catherine Wiley and Beauford Delaney.



COMMUNITY PARTNER _____

THE ACTORS



DAVID BRIAN ALLEY

(Paul Sycamore) has been a Lecturer and Artist-in-Residence for the Department of Theatre and Clarence Brown Theatre for 26 seasons, appearing in over 65 CBT

productions in that time. Favorite CBT roles include Ed in *The Curious Incident of the Dog in the Nighttime*; James Reiss in *King Charles III*; Crumpet the Elf in *Santaland Diaries*; Smee in *Peter and the Starcatcher*; Clown 1 in *The 39 Steps*; Ludie Watts in *The Trip to Bountiful*; and Charlie in *Stones in His Pockets* to name a few. He is a proud member of Actors' Equity Association and SAG-AFTRA. davidbrianalley.com



YASHASHVI CHOUDHARY

(Alice) comes from the capital of her country, New Delhi, India, where she received her B.A. (honours) in English Literature from the University of Delhi. She

is a trained Belly dancer and a Black Belt in Taekwondo. Rooted in movement and inspired by a lifelong passion for literature, she brings a multidimensional perspective to her work. She's grateful for all the love and support from the Knoxville theatre community and is excited to graduate this May. Recent credits include: *Two Gentlemen of Verona* (Sylvia, Lucetta), *Sense and Sensibility* (Lucy Steele), *The Play That Goes Wrong* (Joanna/Charles Haversham), *A Christmas Carol* (Mrs. Cratchit), and *Cry It Out* (Adrienne).



CLAY COOPER

(Tony Kirby) is so excited to be back on the CBT stage for *You Can't Take it With You!* You might have seen Clay recently in the CBT production of *Inherit the Wind* as Bert Cates or as Edward

Ferrars in *Sense and Sensibility*. He holds a B.A in Theatre Education from Appalachian State University, and previous stage credits include: *Bright Star!* (Jimmy Ray), *The Moors* (The Mastiff) and *The {W}right Sister* (Orville Wright). In his free time he enjoys hiking, cooking and serenading his dog Sophie on guitar. To see what he is working on next, follow his instagram @claycooper11



JED DIAMOND

(Boris Kolenkhov) has taught acting and the Alexander Technique at UTK since 2005. He has appeared in many roles at the CBT, including Henry Drummond in *Inherit the Wind* and Ebenezer

Scrooge 9 times now, each time a joy and privilege. He has also acted at Wheelhouse Theatre Co; The New York Shakespeare Festival; Roundabout Theatre; The Acting Company; Signature Theatre; Arena Stage; Syracuse Stage; etc. Prior to UT, he was founding faculty of the New York Shakespeare Festival Shakespeare Lab and of the Actors Center in NY. He taught at NYU Tisch School of the Arts; Stella Adler Studio; Playwright's Horizons Theatre School; Fordham University, etc. He is an AmSAT* certified teacher of the Alexander Technique, trained in New York and London. He taught as a guest artist at Chautauqua Theatre Company, Yale School of Drama, Playmaker's Repertory Theatre, and Great River Shakespeare Festival. He has an MFA from NYU Graduate Acting. *American Society of the Alexander Technique

THE ACTORS



GABRIELLE FERNANDES

(Essie) is a first-year MFA Acting candidate at UTK/CBT here in Knoxville by way of Los Angeles. She recently made her Clarence Brown Theatre debut

as Belle in *A Christmas Carol*. Other recent credits include: Katherine (*Taming of the Shrew*), Anne (*The East*), Hero (*Much Ado About Nothing*). TV & Film: *Revenge for My Mother*, *Haunted by My Stalker*, both with the Lifetime Movie Network and *Daydream* (short film). Much love to her friends and family!



CALVIN FLOWERS

(Government Man #1 / *US Tony Kirby*) is excited to help bring the wonderful show, *You Can't Take it With You*, to life. His prior work with the CBT involves this season's showing

of *A Christmas Carol* as Barnaby/Ghost of Christmas Yet to Come. A huge thanks to the cast for their camaraderie and making this show a wonderful experience.



MICHAEL HIGDON

(*US Mr. Kirby, Henderson*) is the Associate Dean for Academic Affairs and the W. Allen Separk Distinguished Professor of Law at the University of Tennessee Winston

College of Law. Outside the classroom, he has directed and performed with several community theaters in the Knoxville area. He is honored and delighted to be making his CBT debut.



SHINNERRIE JACKSON

(Penelope Sycamore) is an actress and Assistant Professor of Theatre at the University of Tennessee. She can be seen in *30 Rock* and Whit Stillman's *Damsels in Distress*. Previous

theater productions include *Trouble in Mind* (Pittsburgh Public Theatre), *A Night with Janis Joplin* (Arena Stage), *Lady Day at Emersons Bar and Grill* (Weathervane Theatre/River&Rail Theatre), and *Ain't I A Woman* - a one woman show about the heroines of African American history. Shinnerrie is a proud company member of the Clarence Brown Theatre Company and The Weathervane Theatre in New Hampshire.



DOUG JAMES

(Mr. De Pinna) is thrilled to be returning to the Clarence Brown Theatre. After Doug received his undergraduate degree from UT, he went onto get his MFA in Acting Performance, and his

Doctorate in Educational Administration. You may have seen him on the CBT stage in productions of *Inherit the Wind* (Meeker), *Peter and the Starcatcher* (Alf), *A Christmas Carol* (Christmas Present), *Tartuffe* (Monsieur Loyal), among others, or on community theatre productions of *9 to 5*, *Beauty and the Beast*, *Rabbit Hole*, *God of Carnage*, or *Romeo and Juliet* to name a few. He would like to thank the entire production team for this incredible opportunity!

THE ACTORS



CAROL MAYO JENKINS

(Olga) Broadway: *The Three Sisters*, *Philadelphia Here I Come*, *Oedipus Rex* (with John Cullum); *There's One In Every Marriage*, *First Monday*

In October (with Henry Fonda); and *The Suicide* (with Derek Jacobi). Off-Broadway: *Zinnia* (Drama Desk nomination); *Moliere In Spite Of Himself*, *The Lady's Not For Burning*, *Little Eyolf*, and *The Old Ones*. Regional Theatre: *MacBeth*, *Twelfth Night*, *The Tempest*, *Hamlet*, *Othello*, *King Lear*, *Much Ado About Nothing*, *A Midsummer's Night Dream*, *Cymbaline*, *Love's Labour's Lost*, *As You Like It*, *The Sea Gull*, *A Doll's House*, *Long Day's Journey Into Night*, *Pygmalion*, *Les Liaisons Dangereuse*, *Who's Afraid Of Virginia Woolf* (directed by Edward Albee); *Death of A Salesman*, *Amy's View*, *The Retreat from Moscow*, *Otherwise Engaged* (with Dick Cavett); *Present Laughter* (with Louis Jourdan); *Collected Stories*, *Enchanted April*, among many others. Television: *Fame* (NBC); *Another World* (NBC); *The Garden* (CBC); *MacBeth* (PBS); *Happy Endings* (NBC); *Matlock*, *Max Headroom*, and *Nightingales*, among others. At CBT: *The Glass Menagerie*, *The Road To Mecca*, *Trojan Women*, *The Dresser* (with John Cullum), *Arsenic and Old Lace*, *Major Barbara*, *All My Sons*, *The Music Man*, *Moonlight and Magnolias*, *Fuddy Meers*, *4000 Miles*, *The Trip To Bountiful*, *Outside Mullingar*, *The Crucible*, *The Madwoman of Chaillot*, *Blithe Spirit* and *The Curious Incident of the Dog in the Night-Time*, among many others.



AMANDA KING

(Rheba / *US Essie*) is delighted to return to the stage acting in her third Clarence Brown Theatre production. She recently graduated from UTK with a BA of Arts. Amanda recently

worked on *Sense and Sensibility* as a wardrobe assistant, as well as first-hand and stitcher to Neno Russell. She also finished her final undergrad performance as Martha Cratchit in *A Christmas Carol*. Amanda is very grateful for the opportunity to join this production and to spend time with an extraordinary cast and crew. She also wants to extend her thanks to her friends and family for all their support during her time in the theatre.



ALANA MARA

(*US Rheba*, Olga) is a Chicago native studying Theatre, Italian, and Meteorology. She is thrilled to be closing out her collegiate acting career with this beautifully off-beat

production. You may have seen her as Kara in *How to Defend Yourself* in the Lab Theatre (2024), *A Christmas Carol* (2023) as Liza Nubkins and *Hair* (2023) at the Clarence Brown Theatre, and Schwarzky in *25th Annual Putnam County Spelling Bee* (2023) at Oak Ridge Playhouse (and maybe in the future you'll see her on stage at the academy awards). She thanks you for witnessing her fulfill her dream of being on stage.

THE ACTORS



JACKSON NEILSON

(*US Ed, Donald*) is currently enrolled as a junior here at UT as a Theatre major with a concentration in Acting, and a minor in Musical Theatre. Prior credits include *Cabaret*

(Ensemble, Onstage Accordion Player), *A Christmas Carol* (Young Scrooge, Topper, Peter Cratchit, Twyce), *Inherit The Wind* (Puppeteer), *The Play That Goes Wrong* (Cornley Crew, U/S Dennis), and *Sweeney Todd: The Demon Barber of Fleet Street* (Sweeney Todd).



JENNIFER PAGNARD

(*US Mrs. Kerby, Gay Wellington*) After graduating from UTK, Jennifer Lyons Pagnard won a position with The US Air Force Singing Sergeants performing at thousands of events,

serving 23 years. In 2015, she retired from the military and continued performing throughout the Washington, D.C. area. Recently, she relocated to Knoxville where she's a full-time mom and part-time actor/fitness instructor. Favorite past roles: Mrs. Lovett, *Sweeney Todd*; Princess Puffer, *The Mystery of Edwin Drood*; Mrs. Potts, *Beauty and the Beast*; Genie Klein, *Beautiful – The Carole King Musical*; Sally Slaton, *Parade*; Miss Jane, *Floyd Collins*; Sister Aloysius, *Doubt-A Parable*; Florence, *The Odd Couple – Female Version*; and Kitty, *Perfect Arrangement*.



JIM POULOS

(Mr. Kirby) Clarence Brown Theatre debut. Broadway, Off-Broadway, London, National Tours and Regional Theatres across the country, including Denver Center, A.R.T.,

Repertory Theatre of St. Louis, Cleveland Play House, Geva Theatre Center, Syracuse Stage, Utah Shakespeare Festival, Alabama Shakespeare Festival, Theatre Aspen, Great River Shakespeare Festival and PCPA Theaterfest, where he received his conservatory training.



GIDEON RAINEY

(Government Man #3) is a U.S. Navy veteran who is an attending Theatre student here at the University of Tennessee. After first assisting the Clarence Brown Theatre as an Assistant Stage

Manager for multiple shows, he has found a deep passion for being onstage as a character actor. Gideon is thrilled to play the role of Government Man #3 and join his fellow students, friends, and professors onstage in *You Can't Take It With You*.



IZAIAH RAMIREZ

(Henderson) is a first-year MFA Acting candidate at the University of Tennessee, Knoxville and is excited to return to the Clarence Brown Theatre stage as Henderson in *You Can't*

Take It with You. Originally from Milwaukee, Wisconsin, he previously appeared at the Clarence Brown Theatre as Bob Cratchit in the 2025 production of *A Christmas Carol*.

B97.5
Commercial
FREE HOURS

28 YEARS ON-AIR **WDYX**

LISTENER SUPPORTED RADIO

CELEBRATING APPALACHIAN MUSIC & CULTURE

Drive smarter local marketing with insights and solutions from the USA TODAY NETWORK.

The power of knowing you are doing things right.

LOCALiQ
PART OF THE USA TODAY NETWORK

localiq.com

A STORY 250 YEARS IN THE MAKING

We the People

THE AMERICAN REVOLUTION
A FILM BY
KEN BURNS, SARAH BOTSTEIN & DAVID SCHMIDT

PREMIERES
SUN NOV 16 8/7C

east tennessee **PBS**

THE ACTORS



PARKER RAWLINS

(Donald / *US Boris Kolenkhov*) is excited to be returning to the Clarence Brown stage. In addition to his work as an actor, he is also a writer, director, and professor in the field

of film. He holds a Bachelor of Science in Theatre Arts from Southern Utah University as well as an MFA in Film & Media Arts from the University of Utah. He is grateful to his partner, Ellie, and to his friends and family for their love and support. Onstage credits include Gabe (*Next to Normal*), Bobby Strong (*Urinetown*), and the titular role in *Sweeney Todd: The Demon Barber of Fleet Street*. www.parker-rawlins.com



CORTNEYJO SANDIDGE

(Gay Wellington / *US Penelope Sycamore*) is deeply grateful to return to the stage after a 13-year hiatus. A graduate of Paseo Academy of the Performing Arts,

she later studied at American Musical and Dramatic Academy and earned her B.A. in Theatre (Performance) from University of Missouri–Columbia. Favorite roles include Esther (*Intimate Apparel*), Miss Leah (*Flyin' West*), and Dorinea (*Monsieur Baptiste*), praised by the Columbia Daily Tribune as “wonderfully commanding.” Returning in this season of life feels both brave and joyful, a reminder that the arts never truly leave us; they simply wait for us to come home.



STEVE SHERMAN

(Ed) This is Steve’s 14th CBT show. Most recently seen as Max in *The Play that Goes Wrong!* Other favorite CBT roles include Caleb in *The Whipping Man*, Patsy in *Spamalot!*, Leo in *4000*

Miles, George in *Of Mice and Men*, and Jack in *The Open Hand*. Other favorites include Felix in *The Odd Couple* and Robbie in *Bloomsday*. Commercials: *American Century Investments* (worldwide), *BB&T Bank*, and *Cyberlink*. Comedy/improv venues include *The Comedy Store*, *The Hollywood Improv* and *iO West*. An undergraduate from Western Washington, he was recognized by The Kennedy Center for acting and writing his play, *Brian and Joe*. UTK MFA Class of 2016 and now in his eighth year as a lecturer. Favorite role of all is Dad to Will and Ella! All thanks to God, Hana, Melissa, Patrick, and the company of YCTIWY! SteveMSherman.com



ELISE THAYN

(Government Man #2 / *US Alice*) is a first year MFA Acting Graduate student from southern Utah. Elise most recently appeared as the Ghost of Christmas Past in CBT’s *A Christmas*

Carol. Before coming to UTK, Elise spent several years as a professional performer and educator, most notably at the Utah Shakespeare Festival. Other onstage credits include Prospero (*The Tempest*) and #00 (*The Wolves*).

THE ACTORS



TERRY WEBER (Martin Vanderhof) is Professor Emeritus of Theatre at UT (retired in 2021 after 31 years). Currently, he is the President of the Board of The WordPlayers, also serving as Interim Artistic Director. He holds

a BFA from the University of Washington and an MFA from the University of Alabama. Terry's acting and text coaching career has taken him to theatres in New York, Seattle, Milwaukee, Louisville, Chicago, Kansas City, Montgomery, Knoxville, Toronto, Orlando, Charleston, Asheville, Cincinnati, Chapel Hill, Washington, DC, Winona, MN, Cedar City, UT, Normal, IL, and Avignon (France). Selected roles at the Clarence Brown Theatre include Brady in *Inherit the Wind*, Ratchett in *Murder on the Orient Express*, Chairman in *The Madwoman of Chaillot*, Scrooge in *A Christmas Carol*, Larry Morrow in *Dream of the Burning Boy*, Mrs. Bumbrake/Teacher in *Peter and the Starcatcher*, Sir Jealous Traffick in *The Busy Body*, Rev. Parris in *The Crucible*, Marcus in *Titus Andronicus*, Peter Quince in *A Midsummer Night's Dream*, and Captain Keller in *The Miracle Worker*.



LAURA BETH WELLS (Mrs. Kirby) Broadway: Emily Osborn in *Spiderman: Turn Off the Dark* (original cast). CBT credits include Tina in *The Play That Goes Wrong*, Jessie in *Knoxville*, Trish in

Kinky Boots, and Patsy Cline in *Always... Patsy Cline*. LB has also been seen locally at River and Rail Theatre as Alison Bechdel in *Fun Home* and Annie in *In The Next Room*. Regional credits include: Asolo Rep Theatre, Bridge St Theatre, CT Rep, AZ Theatre Co, Hangar Theatre, NC Theatre. Teaching Artist/Directing credits include: UTK, Maryville College, TSC/Knoxville Shakespeare, Pellissippi State, Knoxville Children's Theatre, SF Shakespeare Festival, Hangar Theatre, Cornell University, Syracuse University, SUNY Binghamton. LB holds a BA in Theatre from UTK and an MFA in Acting from Kent State. Love you, Tiny Family, and Sing Out, Louise! For more info, go to www.laurabethwells.com or follow on IG: @thelbwells

SPECIAL THANKS:

Xylophone
Music Arranger
Samuel Stokes

SamuelStokesMusic.com



Samuel Stokes is a composer and arranger of music in a wide variety of styles and instrumentations.

♪ Educational Piano Arrangements

♪ Handbell Choir Arrangements

♪ Christmas Music

♪ EBENEZER: the Musical

♪ All sheet music and MP3s are available for immediate download at SamuelStokesMusic.com



ROTARY INSPIRING THE WORLD

Come and visit a Rotary Club of Knoxville meeting. We meet every Tuesday at noon at the Crowne Plaza Hotel, where we hear great speakers and enjoy social networking and camaraderie. Founded in 1915, we are Knoxville's oldest and largest service club, with around 150 members and always looking for more. The club is apolitical and secular, welcoming members from all communities. Each year our club:

- Awards \$20,000 college scholarships
- Recognizes two Knox County teachers with \$500 awards and \$250 gift certificates
- Supports End Polio Now, Rotary International's signature project
- Sustains clean water projects in 115 villages in Thailand

Learn more at www.knoxvillerotary.org

SETTING THE STAGE

FOR THE FUTURE

The Tennessee Theatre has been one of the most recognizable landmarks in Knoxville since 1928. And now we have embarked upon a journey to ensure that the Official State Theatre of Tennessee remains an arts and entertainment cornerstone for the enjoyment of all.

Construction on our 612 Expansion Project is well underway, and we invite you to help us meet our fundraising goal.

VISIT OUR WEBSITE
TO LEARN MORE!
tennesseetheatre.com/612



TENNESSEE
THEATRE
SINCE 1928

Q&A WITH **LAUREN T. ROARK**

Costume Designer for *You Can't Take It With You*

What has it been like serving as costume designer for *You Can't Take It With You*?

Designing *You Can't Take It With You* has felt like stepping into a joyful love letter to the American theatre. At its heart, the play celebrates family, individuality, and the courage to be guided by one's bliss. While the world is grounded in the late 1930s, the characters themselves resist convention—they dress entirely for themselves.

How do the costumes contribute to the story?

I approached the design through a lens of “dopamine dressing,” layering unexpected prints, colors, and textures that might feel mismatched elsewhere but feel perfectly at home within this household. The costumes serve as an immediate storytelling tool: in a play filled with vibrant personalities, they offer clarity and specificity. From the moment each character steps onstage, the audience gains insight into who they are, how they relate to others, and how they move through the world.



Lauren T. Roark

*Associate Professor,
Costume Design, Head of Design*

Do you have a favorite costume in the show, and why?

I'm especially fond of Alice's Act II playsuit. Inspired by 1930s leisurewear, it appears to be a dress but reveals built-in trousers — something akin to a modern skort. It's a garment that feels both historically rooted and surprisingly contemporary, just like this play!

What makes this production special?

You Can't Take It With You is about chosen family, and our company reflects that idea beautifully. With graduate students, professional guest artists, faculty, and local community members all collaborating, the production becomes a living example of the play's central values.

What are you most excited for audiences to experience?

I'm most excited for audiences to experience the genuine joy and love that radiate from this family. It's a reminder of the beauty in embracing one another fully and of the freedom that comes from living authentically.

THE ARTISTS



MELISSA RAIN ANDERSON

(Director) is excited to be making her Clarence Brown Theatre debut! Regional credits include The Denver Center Theatre Co, Utah Shakespeare Festival, TUTS Houston,

Rep. Theater St. Louis, Cleveland Playhouse, Alabama Shakespeare Festival, Westport Country Playhouse, Santa Cruz Shakespeare, Geva Theater, Syracuse Stage and Pioneer Theatre Co. Melissa lives in New York City with her husband, actor Jim Poulos (tonight's Mr. Kirby). Melissa is a proud member of Stage Directors and Choreographers Society, SAG-AFTRA and Actors' Equity Association. please visit Melissarainanderson.com



KENNETH MARTIN

(Co Scenic Designer) is the Artistic Director of the Clarence Brown Theatre and Chair of the Department of Theatre. As a member of United Scenic Artists, Ken's design work has been

seen at Kansas City Repertory Theatre, Kansas City Actors Theatre, The New Theatre, The Sacramento Theatre Company, Cleveland Ensemble Theatre, Contemporary American Theatre Company, Ocean State Theatre Company, Surflight Theatre, Theatre by the Sea, Florida Repertory Theatre, Theatre Rhinoceros, among others. He has also designed shows for many colleges and universities including Marquette University, University of Wisconsin-Stevens Point, Coastal Carolina University, Cuyahoga Community College and The Ohio State University. Professor Martin has actively served his profession as a respondent for the Kennedy Center American College Theatre Festivals, as a consultant for several regional theaters and through active participation in organizations like the United States Institute for

Theatre Technology, the Association for Theatre in Higher Education and University Resident Theatre Association.



ALONDRA CASTRO

(Co Scenic Designer) is a second-year MFA Scenic Design student here at the University of Tennessee, Knoxville. Her past Scenic Design work includes *The Royale* (The Jenny Boyd

Theatre), *How to Defend Yourself* (The Lab Theatre), *The Colored Museum* (BVTA), *I and You* (Angelo State University), and *Bright Ideas* (Angelo State University). Alondra also worked in paints and props for two years in Richmond Virginia where she was able to work on a range of productions which included plays, musicals, theatre for young audiences, and small intimate shows. You can see more of her work at alondracastrodesigns.myportfolio.com



LAUREN T. ROARK

(Costume Designer) is the head of graduate costume design in the Department of Theatre at the University of Tennessee. She has previously designed *King Charles III*, *Million Dollar Quartet*, *Always... Patsy*

Cline, *A Christmas Carol* (2021 & 2022) and *The Giver* at the Clarence Brown Theatre. Select regional credits include Cleveland Play House, Malz Jupiter Theatre, Milwaukee Repertory Theatre, Great Lakes Theatre, Arizona Theatre Company, Repertory Theatre of St. Louis, and the Tony Award winning Utah Shakespeare Festival and Cincinnati Playhouse in the Park. Lauren holds an MFA in Costume Design and Technology from the University of Missouri-Kansas City and is a proud member of United Scenic Artists, Local 829. To learn more, visit www.laurentroark.com.

THE ARTISTS



MIGUEL J. SANTIAGO

(Lighting Designer) is a Lighting and Projections designer based in Knoxville, TN. He currently is pursuing an MFA in Design with a concentration in Lighting and Projection at the

University of Tennessee. Miguel has worked in numerous theatres across the Eastern U.S., some of which include the Clarence Brown Theatre (LORT-D), North Carolina Stage Company, Clayton Performing Arts Center, and Gretna Theatre. You can view more of his work at miguelsantiago.com.



CHANCE BECK

(Sound Designer) is a second-year Sound & Media Design Graduate Student at UT. *You Can't Take It With You* is their third show here at the Clarence Brown Theatre. Chance has previously

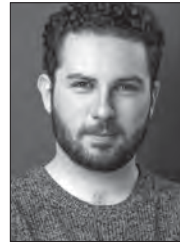
worked on *The Harvest*, and *Failure: A Love Story* here at the Clarence Brown Theatre and with the local Tennessee theatre company River & Rail on *It's A Wonderful Life*. They come from the University of Southern Mississippi, where they achieved their BFA in Theatre Design & Technology. They are beyond excited to bring this beautiful show to life and have greatly enjoyed the collaborative process with the other incredible artists on this production.



KATIE CUNNINGHAM

(Co Voice and Text Director) has been acting at Clarence Brown Theatre since 2013 and teaching at UTK since 2018, joining the full-time faculty in 2020 with a specialty in voice, speech, and dialects.

Katie is an Assistant Professor of Theatre and Head of Acting. Her acting credits include *Lady Macbeth*, *Maria*, and *Emilia* among others at the Tony Award-winning Utah Shakespeare Festival, plus work with NYC companies (Resident Acting Company, TACT), Asolo Rep, and numerous regional theaters nationwide. As resident voice, text, and dialect coach at CBT, she has also coached for PlayMakers Repertory, Great River Shakespeare Festival, Nashville Rep, and Southwest Shakespeare Company among others. Her scholarly work appears in the *Journal of Voice*, *Voice and Speech Review*, *The Conversation*, and *IDEA*. She is a certified Knight-Thompson Speechwork teacher and PAVA Recognized Vocologist with an MFA from FSU/Asolo Conservatory and BA from UNC Chapel Hill. Member: AEA (since 2010), SAG-AFTRA, VASTA, and PAVA. For Patrick and Paddy, grá mo chroí. www.katiecunningham.com



SAMMY PONTELLO

(Co Voice and Text Director) is an actor, voice and dialect coach, and teaching artist based in Knoxville, Tennessee. Currently pursuing their MFA in Acting at the University of Tennessee,

they've worked regionally with Florida Studio Theatre, Orlando Shakes, Great River Shakespeare Festival, Texas Shakespeare Festival, and the Clarence Brown Theatre. Past coaching credits include two productions of *A Christmas Carol* at the Clarence Brown and *Romeo and Juliet* and *Comedy of Errors* with Great River Shakespeare Festival. IG: @sjpactor | sammypontello.com

THE ARTISTS



PATRICK LANCZKI

(Production Stage Manager) is thrilled to be back for his 12th season at the CBT and his 10th as Production Stage Manager. His regional stage management

credits include five years as resident stage manager at Asolo Repertory Theater, as well as multiple seasons at Arkansas Repertory Theater, Merry-Go-Round Playhouse, Northern Stage, and several Off-Broadway productions. As an actor, starting at age 16, he has appeared in numerous national and international tours, including seven tours of *Jesus Christ Superstar*, television, movies, and voiceovers. Patrick has been a proud member of the Actors' Equity Association since 1984 and dedicates his work on this production to his family: AHFOL to Katie, my best friend, favorite actress, and wife, and the newest member of our family: our son Paddy.



MAYSON KNIPP

(Assistant Stage Manager) is thrilled to be working her first show as a recent UTK graduate with the Clarence Brown Theatre! Her previous credits include *Primary*

Trust - Forward Theater Company; *Hair*, *Inherit the Wind*, *Kinky Boots*, and *Trouble in Mind* - the Clarence Brown Theatre; *Hamlet* and *Comedy of Errors* - Great River Shakespeare Festival; *Assassins* - Darkhorse Theatre; *The Moors*, *How To Defend Yourself* - The Lab Theatre. She would like to thank her family and friends for always supporting her, a special thanks to her little sister for working on this show with her, and Patrick for teaching her everything she knows.



TOM CERVONE

(Managing Director) Tom is grateful and honored to serve the Clarence Brown Theatre as Managing Director. Cervone has also served as executive director for both Dogwood

Arts and the Historic Tennessee Theatre Foundation, but the CBT/UTK Theatre Department is Tom's administrative and artistic home. Cervone is a long-time board member of the WordPlayers and continues to evangelize on behalf of the art and culture community locally and nationally. Tom received the Chancellor's Citation for Outstanding Service to the University in 2010. Cervone holds his undergraduate degree in Theatre from West Liberty University in West Virginia and a Master of Fine Arts and an MBA from UT. He is a graduate of and was selected as the Class Representative of the Leadership Knoxville class of 2011. Cervone was inducted into his undergraduate alma mater's class of 2015 Wall of Honor and was appointed by the Governor of WV in 2021 to serve as a member of the Board of Trustees of WLU.



SUSAN L. MCMILLAN

(Production Manager) is in her twelfth year as Production Manager at the CBT and UT Department of Theatre. In addition, she teaches Stage Management. Prior,

Susan was the Production Manager and Stage Management Instructor at the University of California, Santa Barbara, for 6 years. Susan is a member of Actors' Equity Association, and was a Stage Manager at the Oregon Shakespeare Festival for 18 years. Additionally, she has stage managed at the Guthrie Theatre,

Shakespeare Theatre Company, Portland Center Stage, PCPA, Rogue Valley Opera, Portland Civic Theatre, and has toured to the Kennedy Center. Through science (B.S. degrees in Biochemistry and Biology from Oregon State University) and music (cellist), Susan found her way into theatre (Minor in Theatre from OSU). She is incredibly grateful for all the opportunities and adventures along the way, inspirational mentors, artistic and talented colleagues, amazing students, and the love and support of her family and friends. And very grateful for Molly – woof! This season is fully dedicated to her beloved, beautiful, and deeply missed mother, Grace – a shining light forever. And to Jimmy – love is the bridge.

PRODUCTION CREW

MANAGEMENT

Fight Director - **Sam-Claire Bieber**
 Music Director - **Nathan Reeves**
 Intimacy Director - **Casey Sams**
 Assistant Stage Managers - **James Burnett, Molly Knipp, Benjamin Miller, Mia Eller, Zoey Schmid** and **Erica Zacharias**
 Fire Watch- **Alexandra Dally** and **Rachel Winenger**

COSTUMES

Assistant Costume Designer - **Matthew Carl**
 Wardrobe Supervisor - **Laura Clift**
 Assistant Wardrobe Supervisor - **Riya Golden**
 Wardrobe Crew - **Janie Brice, Madeline Joyner, Mikenzie Lappas, Kaia Leacock, Mei Sirag** and **Carter Smith**

SCENERY

Deck Crew - **Owen Allard, Riley Crandell, Tyler Hawe, Kira Pegues, Christopher Swenton,** and **Florian Zunino**

LIGHTING

Assistant Lighting Designer – **Kayla Moore**
 Light Board Operator - **Hayden Springer**
 Deck Electrician - **Diego Parra**

SOUND

Sound Board Supervisor - **Elisabeth Dupuy**
 Sound Board Operator - **Gavin Hensley**
 Sound Mixers - **Ellie Roberts-Wolford** and **Liam Cumesty**
 Deck AV - **Tommy Gragg** and **Finn Learn-Houston**

CREW SWING

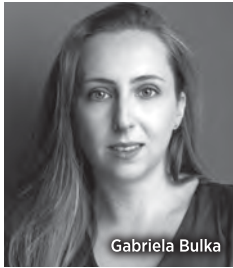
Joshua Cockinos and **Brock Burwitz**

SPECIAL THANKS

Xylophone Instructor & Consultant
 - **Alexandra Dally**

COME PRINT WITH US!
 UTK SCHOOL OF ART
LETTERPRESS STUDIO
 Art & Arch Bldg, 341B
 LEARN MORE
 OPEN TO EVERYONE ON CAMPUS!
 THE EXCELSIOR
 MADE IN U.S.A.

Congratulations to our MFA Actors graduating Spring 2026!



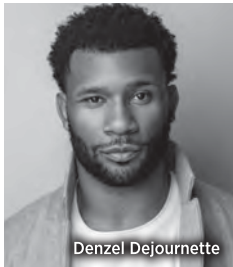
Gabriela Bulka



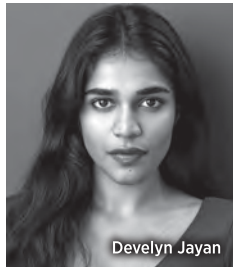
Yashashvi Choudhary



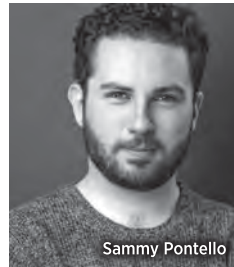
Clay Cooper



Denzel Dejournette



Develyn Jayan



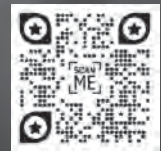
Sammy Pontello

Scan to
learn more:



SUMMER
CBT ACTING
WORKSHOP

JULY 6-17
2026



CONCESSIONS

COOKIES



Chocolate Chip Cookies \$5
classic recipe! — pack of 2

Lemon Thumbprint Cookies \$5
shortbread cookies with lemon icing – pack of 3

SNACKS

Chips \$2

Candy \$2

DRINKS



Soft Drinks \$2

Bottled Water \$2

Coffee regular | decaf \$2

Only beverages with lids are permitted inside the auditorium.

SNACK MIX



Mayfair Mix \$4
Including butter toffee peanuts, taco sesame sticks, peanuts, cajun corn sticks, pretzel balls and cheddar whales

MERCHANDISE

Tumbler \$5
cold beverages only

Travel Mug \$7
cold and hot beverages

CLARENCE
BROWN
THEATRE
AT THE UNIVERSITY OF TENNESSEE

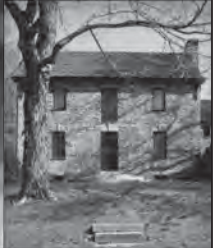
THE *Jenny Boyd*
THEATRE

We are proud to support Knoxville's small businesses.



Penny4Arts gives every child in Knox and surrounding counties an opportunity to attend arts and culture events/activities at the maximum cost of ONE PENNY (or FREE) when accompanied by a paying adult.

865-523-7543
PENNY4ARTS.COM



AVAILABLE NOW AT YOUR COUNTY CLERK'S OFFICE
\$35

BACK THE ARTS WITH THE NEW ARTS PLATE



SUPPORT ARTS IN YOUR SCHOOLS AND COMMUNITY



No need to wait until your tags expire, you can change your license plate anytime. Fees will be prorated. For more information about specialty license plates, visit tn.gov/revenue/vehicle.



PRODUCTION STAFF

ADMINISTRATION

Artistic Director/Department Head -

Kenneth Martin

Managing Director - **Tom Cervone**

Associate Artistic Director - **Katie Lupica**

Marketing & Communications Director -

Mindy Cooper

Business Manager - **Le Anna Jacobson**

Administrative Specialist - **Kass Parish**

General Manager - **Vickie Carter**

IT Specialist - **Mark Spurlock**

Graphic Designer - **Julie Anna Summers**

PATRON SERVICES

Manager of Ticketing and Sales - **Sarah Burton**

Box Office Manager - **Brittany Spencer**

House Manager / Assistant Box Office

Manager - **Savannah Smith**

Audience Experience Manager - **David Ratliff**

Patron Service Associates - **Synai Bilbrey,**

Kelly Boyle, Desirea Burke, Anjelina Cruey,

Gabriela Deleon, Ty Duncan, Tyler Glover,

Monica Gardiner, Jayden Griffin,

Madison Huynh, Erik Hernandez Ramirez,

Malachi Jackson, Max Jacob, Faith McManus,

Valeria Menendez, Breyana Meyer,

Joseph Molitor, Izabella Monti-Chapple,

Michael Osifo, Max Payne, Shelby Perdue,

Kohl Schmelzer, Caroline Smith, Lilly Snead,

Justin Spinella, Jenna Tiger, Madison Wall,

Hogan Wayland, Timothy Whittock,

Sammy Wigley, Sarah Wahrmund

and **Sierra Woodard**

ENGAGEMENT/DEVELOPMENT

External Relations Manager - **Shelly Payne**

Grants, Education, and Outreach Manager -

Hana Sherman

Tours/Workshops - **Neno Russell**

INTERNS

Cole Clemmons, Rebecca Drake

and **Carter Smith**

PRODUCTION

Production Manager - **Susan L. McMillan**

Production Stage Manager - **Patrick Lanczki**

Rental Coordinator/Assistant Production Manager

- **Phyllis Belanger**

COSTUMES

Costume Shop Manager - **Melissa Caldwell-Weddig**

Cutter/Draper - **Kyle Andrew Schellinger**

Costumers - **Amber Williams, Elizabeth Aaron,**

Ellen Bebb and **Laura Cliff**

Costume Assistants - **Matthew Carl, Tori Niemiec**

and **Victoria Kahnle**

Wigs - **Siobian Jones/The Mighty Wig**

Laundry Crew - **Crow Dalton** and **Anna Swart**

ELECTRICS

Electrics Shop Manager - **Travis Gaboda**

Lead Electrician - **Jon Mohrman**

Lighting Assistants - **Miguel Santiago, Angelyn Baer,**

Josh Rodriguez, Diego Parra, Dylan Tillery

and **Ella Jeske**

SCENERY

Technical Director - **Jason Fogarty**

Assistant Technical Director - **George Hairston**

Lead Carpenter - **Jerry D. Winkle**

Senior Carpenter - **Kyle L. Hooks**

Scene Shop Over Hire - **Nikki Gericke**

Scene Shop Assistants - **Justice Morris,**

Grace Bartoo, Leilane Bertunes, Olivia Laymen,

Bronson Trunzo, Jackson Garrett, Minnie Brock

and **Alaina Dinsmore**

Scenic Charge Artist - **Isabel Isaac**

Scenic Artist - **Alondra Castro** and **Bex Richter**

PROPERTIES

Properties Shop Supervisor/Props Director

- **Christy Fogarty**

Assistant Properties Director - **Benjamin Miller**

Lead Properties Artisan - **Sarah Gaboda**

Properties Artisans - **Brock Burwitz, Hudson Guy,**

Ada Hermoso, Skye Reid and **Rachel Winenger**

SOUND

Sound and Video Manager - **Chris Walters**

Sound Assistants - **Chance Beck, Elisabeth Dupuy**

Sound and Video Shop Assistant - **Liam Cumesty**

THE *Jenny Boyd* THEATRE

Thank you to our most generous donors for The Jenny Boyd Theatre.
We couldn't have done it without you!

Randy and Jenny Boyd

Haslam Family Foundation Inc.
Estate of Florence F. and Dr. H. Russell Johnston
Stowers Machinery Foundation, Inc.
Liz and Wes Stowers

Nancy Voith Melanie Wood Robert Lederer The Colquitt Foundation

Maureen Dunn McBride
Sara Phillips
Susan Parrott

John and Margie Nichols Gill
21st Mortgage Corporation
Julie Howard and Ted Flickinger

Brian Pendleton
Chad Goldman
Gale Anderson
Jan and Mary Ann Simek

LeAnne Dougherty
Robert and Kay Moss
Jane and Carl Moore
Timothy and Amy Williams

Lyle Irish
Larry Brakebill
Sandra and David Martin

Jeremiah Ahrens
Ronald Alexander
David Alley
Robert Alley
Jessi Arnidis
Jamie Ayres
Callie Bacon
Leslie Badaines
Reva Bagi
James Baker
Jennifer Banner
Ellen Bebb

Megan Beeler
Shawn Benson
Larry Bounds
Charles Brakebill
David Brandes
William Brewer II
Lindsey Brown
True Brown
Kathleen Buckley
Sarah Burton
John Bushore
Lillian Bynum

Kieran Byrd
Amy Caponetti
Alan Carmichael
and Cynthia Moxley
Fay Carr
Fany Carrera
Lisa Carroll
Julianne Ceravalo
Tom Cervone
and Susan Creswell
Jeffrey Cheek
Weiwei Chen

Brooks and Karen Clark
Christopher Clark
Robin Conklin
Michael Combs
Eva Cowell
Betsey Creekmore
Katharine Pearson Criss
Jayne and Joe De Fiore
Sandra Dickenson
Diana Dickey
James and Leann Dickson
Sandra R. Dickenson
Toral Doshi
Steve Drevik
Jan Duncan
Donald Dunning Jr.
Vickie Ellis
Danielle Ely
Susan and Kent Farris
Craig Fitzhugh
Norman Featherston
Christy Fogarty
Kristi Francavilla
Debra Freeberg
Kevin Galbreath
Brian Gard
James and Pamela Given
Katherine Grzywacz-Jones
Allison Hahn
Tara Halstead
Charlotte Headrick
Merrit Heminway
Richard Henderson
Amy Hess
Michael Higdon
John and Susan Hoffman
Deborah Hogan
Charlotte Holland
Thomas and Mary Hollenbeck
Emily Howard
Lori Ingle
Elisabeth Jackson

Larsen Jay
Carol Jenkins
Lindsey Johnson
Debbie Jones
Phil King III
Katherine B. Kline
Susan Kornegay
Irena Linn
Terri Lee and Jack Love
Erica Lyon and Dylan Jones
Cal and Rebecca MacLean
Stephen Mangum
Francine Marasco
Ken and Julia Martin
Stephen Martin
Rose Mary McCall
Sheena McCall
Susan McMillan
Gary Miller
Mark Mitchum
Morgan Moody
Linda Norris
Margaret Norris
John North
Jill Ogle
Terry Olberding
Hei Park
Kendall Parrott
Joe and Shelly Payne
David Pollard Jr.
Arnold Pomerance
Amy Pope
Haniska Prinston
Vladimir Protopopescu
Sharon Pryse
Anderson Rast
David Ratliff
Sarah Reid
Lee Riedinger and Mary Zuhr
Emma Roberts
Kerry Roehr
Patricia Roux-Sharp

Philip and Elizabeth Royer
Diana Rowland Samples
Jane Sams
Sandra Sanders
Kyle Schellinger
Eric Schmidt
Gerhard Schneibel
Gerhardt Schneider
Susan Sgarlat
Andrew Sheehy
Keith Shope Sr.
John Sipes
Helen Sirett
Stephanie Slater
Shane Sloan
Mark Spurlock
Virginia St. Ana
Shelia-Marie Stacy
Sandra Stoutt
Julie Summers
Hana Sherman
Tyler and Barbara Tallent
Lisa Thomas
Sam Tipton Jr.
Pedro Tomás-Mitchell
Alice Torbett
Robert Trigiano
Truist Bank
Robin C. Turner
Terry and Linda Tyler
Karen Valero
Robin Ventress
Georgiana Vines
Sharon Ward
Alexander Waters
Brent Waugh
Terry Weber
Westgate Entertainment LLC
Amber Williams
Catherine York

LORT

League of Resident Theatres

The University of Tennessee, Knoxville is one of just a handful of universities nationwide with its own professional LORT theatre. The Clarence Brown Theatre Company is a LORT D company and is fully integrated into the Department of Theatre's academic curriculum.

Founded in 1974, the Clarence Brown Theatre Company is one of the older companies in the LORT system and has a distinguished history of hosting artists of national stature.

All Department of Theatre faculty have dual appointments with the professional company in their area of expertise. MFA Performance students may join the Clarence Brown Theatre Company in their third year of study. MFA Design students have the opportunity to work on LORT productions throughout their graduate training.

COMPANY MEMBERS:

Kenneth Martin - *Artistic Director, Department Head*

Tom Cervone - *Managing Director*

Elizabeth Aaron

Terry D. Alford

David Brian Alley

Phyllis Belanger

Jeb Burris

Sarah Burton

Melissa Caldwell-Weddig

Vickie Carter

Mindy Cooper

David Crawford

Katie Cunningham

Jed Diamond

Gina M. Di Salvo

Christy Fogarty

Jason Fogarty

Sarah Gaboda

Travis Gaboda

George Hairston

Kyle L. Hooks

Isabel Isaac

Shinnerrie Jackson

Le Anna Jacobson

Patrick Lanczki

Katie Lupica

Kristen Martino

Susan L. McMillan

Jon Mohrman

Kass Parish

Joe Payne

Shelly Payne

David Ratliff

Lauren T. Roark

Neno Russell

Casey Sams

Kyle Schellinger

Hana Sherman

Steve Sherman

Savannah Smith

Brittany Spencer

Mark Spurlock

Julie Anna Summers

Daniel Bird Tobin

Chris Walters

Laura Beth Wells

Amber Williams

Jerry D. Winkle

Kenton Yeager

YOUR FUTURE, CENTER STAGE.



**At the University of Tennessee,
your classroom is a professional stage.
You don't just study theatre — you create it.**

Every semester, students work side by side with the Clarence Brown Theatre Company, a professional theatre in residence on the UT campus. Here, you'll earn your bachelor's degree while collaborating with artists and creators from across the country.

On stage, backstage, in the rehearsal room, labs, and production studios, our undergraduates train with nationally recognized directors, designers, and actors who bring real industry experience straight into the classroom.

**Your artistic voice. Your theatre community.
Your thriving future.**



theatre.utk.edu
865-974-6011



clarencebrowtheatre.com



**Join the Clarence Brown Theatre Society
and Experience the Thrill of the Arts
Like Never Before!**

Become part of an extraordinary circle of passionate theatre lovers and arts champions who make Knoxville's cultural scene shine! With a tax-deductible contribution of \$250 or more, you'll unlock VIP access to exhilarating events, exclusive behind-the-scenes adventures, and one-of-a-kind connections with fellow Arts enthusiasts.

Your generosity powers the breathtaking productions that light up our stages and fuel the artistic dreams of the next generation. This is more than membership — it's your backstage pass to the magic, creativity, and unforgettable experiences that make live theatre so spectacular.

Your support is more than a gift; it's a legacy. Don't just watch the magic — **be a part of it!**



Scan to
Learn More



**Download the new
WUTK app available in
android and apple stores now!**



Want a unique and exciting way to experience a deeper connection with the art you see on stages?

Join Marian Brown's Circle, where theatre lovers go beyond the audience and straight into the heart of the storytelling!

This isn't your ordinary book club. We dive into the scripts before they hit the stage, explore their themes, characters, and creative choices with directors, actors, dramaturgs, and sometimes even the playwrights themselves. Our Page2Stage events and Literary Lunches spark lively, thought-provoking discussions amongst great company, making every gathering an unforgettable experience.

If you love theatre and engaging conversation, this is the perfect way to deepen your understanding and appreciation for the productions you see on stage, while also supporting the CBT!



Scan to
Learn More

FROM
CHOPIN
TO
COLTRANE
TO
CITY HALL

WUOT brings you the best of classical, jazz, and local news along with your favorite NPR programs. Tune in today at 91.9 FM, stream online at WUOT.org, or download the WUOT mobile app.

WUOT 91.9
fm
wuot.org  [@wuotfm](https://twitter.com/wuotfm)

npr

10 WEATHER IMPACT ALERT

TRACK THE **IMPACT**. BE **PREPARED**. STAY **SAFE**.

STEP 1

DOWNLOAD THE
10NEWS APP

STEP 2

ASSEMBLE A
WEATHER IMPACT KIT

STEP 3

HAVE AN
EMERGENCY PLAN

DOWNLOAD THE
10NEWS APP NOW



GET **WEATHER IMPACT DAY**
ALERTS, FORECASTS, AND UPDATES.

Stream newscasts on  app on **ROKU**   Watch on **Apple TV**

ABOUT CLARENCE BROWN THEATRE



Celebrating more than 50 years of professional theatre!

DID YOU KNOW?

- 3** Venues - Clarence Brown Theatre, The Jenny Boyd Theatre, Lab Theatre

- 6** Productions/200+ Performances Sept - May

- 18** Faculty

- 22** Graduate Students

- 33** Staff

- 119** Undergraduate Students

- 225+** Artists Each Season

- 500+** Individual, Corporation, & Foundation Support

- 550** Seats in the Clarence Brown Theatre

- 240+** Seats in The Jenny Boyd Theatre

- 125** Seats in the Lab Theatre

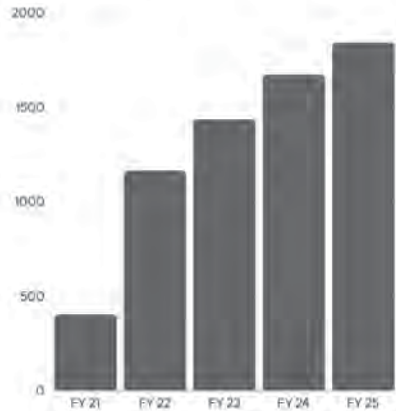
PATRONS / YEAR (2024 - 2025)

- 35,000+** Patrons Attending

- 6,000+** Students from 50+ schools

- 2,700** Season Subscribers

- 75%** Live in Knoxville



2024-2025 Attendees by County



Photos top L to R: Aleah Vassell in HAIR; Jacob Leon, Jasmine R. Handy, Rachel Darden, Allison Bunch and Drew Drake in THE GIVER; Chris Verrier in ADAPTIVE RADIATION; Cecilia Iole and James Onstad in CANDIDE; Omari Collins in KINKY BOOTS; By Brynn Yeager and Ella Marston

THANK YOU

Every gift, big or small, makes an impact on our students, our faculty and staff, the Clarence Brown Theatre, and the arts in this community. No matter the fund, we wanted to say thank you to our supporters. Contributions listed below are through February 2026. For corrections to your acknowledgement name, please contact Shelly Payne at shellypayne@utk.edu.

Hannah Adcock
Sandra and Jay Aldrich
Terry Alford and Michael Nunley
Laura and Jeffery Allen
Robert and Elizabeth Alley
In Honor of David B. Alley
David and Jill Alley
Andrea Anderson
Misty Anderson and John Tirro
David Andrews
Anonymous
Anonymous Individual
Barbara and Steve Apking
Anne Armstrong
Amanda Arz
Jennifer Banner
Ruth Barber and John Watson
Melissa and Edward Barnes
R Lavender Barrett
Anne Becker
Jeffrey and Nancy Becker
Jeffrey and Nancy Becker
*In Honor of
Calvin Abbott MacLean*
John and Connie Begovich
Phyllis Belanger
Julia and Gary Bentley
Victoria Carter
Myrwood Besozzi
and Carol Beilharz
Tasha Blakney
and Michael Rogers
Larry and Jeanie Brakebill
Christopher Brakebill
Christopher Brakebill
*In Memory of
Charles Franklin Brakebill*
William and Rebecca Brewer
Lindsey Brown
Dorothy Bryson
Pamela Bullock
Sarah Burton
John and Sandra Butler
Lisa Byrd
Angela Cain
Peter and Sandra Campbell
Cornhead Carpentry
Hodges, Doughty & Carson
Amy Caponetti and Sam Gleason

Amy Caponetti and Sam Gleason
In Memory of Robert E. Parrott
Alan Carmichael
and Cynthia Moxley
Bonnie Carroll and Roy Cooper
Cornhead Carpentry
Elizabeth Carroll
Bonnie Carroll
Hodges, Doughty & Carson
Tom Cervone and Susan Creswell
Mary Chan
Jimmy and Ileen Cheek
Lauren Chiles and Gerald Witt
Beth Howe-Christensen and
Richard Christensen
Brooks and Karen Clark
Christopher and Teri Clark
Joan and Kenneth Clevenger
Amy and David Clugg
Dawn and Kenneth Coleman
Marcia Cook
Elizabeth Craig
Kenneth and Jane Creed
David Crawford
Reid and Olga Crumpton
Jo Cunningham
Kathryn Cunningham
and Patrick Lanczki
Marianne Custer
Clay and Anita Davis
Adam Deatherage
*In Honor of
Chris Alan Deatherage*
Chris Deatherage
Joseph and Jayne De Fiore
Rocky Hill Family Dentistry
Lara Dent and Daniel Ford
James Diamond
Gina Di Salvo and Jeffrey Tinley
Leann and James Dickson
Camelia Dougherty
LeAnne Dougherty
Steve Drevik and Lee Rogers
Jeffrey and Virginia Eberting
Stuart Elston
Danielle Ely
Moira Ely
Hannah Engelbrecht
Maribeth and Frederick Ergen

Laura and Carl Eshbaugh
Robin and Jerry Estes
Tim and Pat Ezzell
Susan and R. Kent Farris
Larry Fauver
Joseph Ferguson
Steven and Martha Forbes
Bank of America Foundation
Jason and Christy Fogarty
Debra Freeberg
Lisa Freeman
Travis and Sarah Gaboda
Brian and Heidi Gard
Stanton and Alison Garner
Mark and Nan Gaylord
Kathryn Germain
and Glen Germain
Charles Giambrone
Rosemary Gilliam
Pamela and James Given
Ashly Goodwin
Jennifer Greene
Joseph Guidetti
Tyra and Eric Haag
William Hall
Tara and Scott Halstead
Anne Harley
*In Memory of
Sylvia Anderson Phillips*
Katie Harrill
Dennis Hayward
Charlotte Headrick
Don and Carole Heiser
Merrit and Joan Heminway
Peggy Jan Henley
In Memory of Roy Lewis Aaron
Lauren and Christopher Herbstritt
William Herriage
Amy Hess
Michael Higdon and Scott Bird
John and Susan Hoffman
Stephen Hollister
Christian Holt
Lila Honaker
Roger and Susan Hoover
Julie Howard and Ted Flickinger
Julie Howard and Ted Flickinger
In Memory of Roy Aaron

Stowers Machinery
Foundation, Inc.
Le Anna Jacobson
Nicki Jenkins
In Memory of Roy Lewis Aaron
Ellen Johnston
Kimberly Kallstrom
Sally Kath
Lucy Keh
James and Mary Kois
Susan and Jerry Kornegay
Jeffrey and Susan Kovac
Robert Lacy
Michael and Nancy Lofaro
Mary Long
Saphina Longsworth-Orr
Laura Lucas
Katherine Lupica
Bradley and Sarah Lyle
Kathryn Lynch
Beauvais Lyons and Diane Fox
Calvin and Rebecca MacLean
Robert and Brenda Madigan
Karen Hough Majidzadeh
Charles Maland
Francine Marasco
Linda Marion
Kenneth and Julia Martin
Neil McBride and
Maureen Dunn McBride
Sheena McCall
Susan McMillan
Debra Mellor
Amanda Middleton
Arthur Mitchell
Charles Mitchell
William and Virginia Morrow
Asya Mounger
Rosemary and James Murphy
Samantha Murphy
and Justin Roby
Geri and William Muse
Kay and James Myers
Mildred Myers
Chad and Rebecca Neace
Mergie Nichols Gill and John Gill
Linda Norris
Margaret and Benjamin Norris
John North
Carman North and
Christopher Lowe
Kitty Norton
Jean Ogle
Kathleen and James O'Hara
Carole Ortenzo
Townes Lavidge Osborn
and Robert S. Marquis

Drs. Bonnie Ownley
and Neil Quigley
Hei and Stanley Park
Susan Parrott
Linda Parsons
Erin and Ryan Pate
*In Honor of
Larry Charles Brakebill*
Erin and Ryan Pate
*In Memory of
Charles Franklin Brakebill*
Joseph and Shelly Payne
Meredith Peccolo
and James Vaughan
Saralee Peccolo-Taylor
and C. Taylor
Tommy Phelps
and Dr. Susan Pfiffner
Sara Phillips
Pamela Phillips
Margaret and Carl Pierce
Amy and Bradley Pope
Judith Poulson
Vladimir Protopopescu
Lee Riedinger and Mary Zuhr
Stacy Ray
In Honor of Carol Mayo Jenkins
Donna Riggs
Mary and Rob Ritchie
Kyle Schellinger
Lauren Roark and
Spencer Christensen
Neno Russell
David and Nancy Rutherford
Jason Saraceni
Trevor Schmitt-Ernst
Larry and Katherine Seale
Bryan and Brandi Self
Chadwick Self
Brian Semple
*In Memory of
James Thomas Brimer*
Susan Sgarlat and Charles Fels
Christine Shepardson
Hana and Steven Sherman
Joshua and Jill Shuter
Jan and Mary Simek
Melinda and James Simmons
Jack Singleton
Mark Skillman
John Slater
Stephanie Slater
Tana and John Slater
Shane Sloan
Jeffrey and Pamela Smith
Savannah Smith
Mark and Kelly Spurlock

Elizabeth and Harry Stowers
James Snider and Theresa Tunnell
Margaret Songer-Mercier
John and Delores Sorey
Brittany Spencer
Linda and John Stebbins
Bob and Marcia Stewart
Robert Stewart
Sandra and Howard Filston
Julie Summers
Meghan Sutherland
Brooke Swart
Elizabeth Swanner
In Memory of Roy Lewis Aaron
Mack Swiney
Nellie Thomas
Carolyn Thompson
Templeton Thompson
and Sam Gay
Tig T
Daniel Tobin and Erika Sengstack
Kristina Straub and Carol Goldberg
Pedro Tomás-Mitchell
and Roger Roark
Alice Torbett
Robin Turner
Terry and Linda Tyler
Owen Vallejo
Lynn and Anthony Venafro
Georgiana Vines
Nancy Voith and Kenneth Stark
Stephanie Wall
Maggie Wallen
Alexander Waters
Terry and Jeni Weber
Hugh and Vickie Wells
Donna Wertz
Stephanie Welsh
John Wheeler

CORPORATE, FOUNDATION AND GRANT SUPPORT

Arts & Cultural Alliance
City of Knoxville
First Horizon Bank
Mildred Haines and
William Elijah Morris
Lecture Endowment Fund
Knox County Tourism
Consortium
Pilot Company
Stowers Machinery
Corporation Foundation
Tennessee Arts Commission
The Shubert Foundation, Inc.



EXPERIENCE THE **COLLEGE OF ARTS AND SCIENCES** *ADVANTAGE!*

The College of Arts and Sciences **offers the broadest range of academic programs and opportunities for research and creative activities** at the University of Tennessee, powered by faculty expertise across every discipline. Our college is a **vibrant hub for learning and discovery**, where passionate people and the power of ideas create an atmosphere of “What will we think of next?” Students from across Tennessee, the nation, and the world build skills, gain mentorship, and engage in hands-on experiences that prepare them to make a real-world impact.

- **RECEIVE** a world-class academic experience.
- **GAIN** the skills needed to make a real-world impact.
- **PURSUE** the interests you’re most passionate about.
- **ACHIEVE** your goals through flexible academic pathways.
- **CONNECT** with inspiring faculty, staff, and peers.

Create a unique academic journey that prepares you to shape a future with focus and purpose. Graduates leave the college with the versatile knowledge needed to stand out, the experience to see the big picture, and the tools to zoom in and make exactly the impact they want to make in the world.

Learn more by visiting artsci.utk.edu
and following on social media!



THE UNIVERSITY OF
TENNESSEE 
KNOXVILLE
COLLEGE OF ARTS & SCIENCES



Members of the CBT Society provide vital investments for the Clarence Brown Theatre's programs and activities year after year, all while receiving VIP treatment in return. Become a member today and make a difference in the next generation of theatre artists! For corrections to your acknowledgement name, please contact Shelly Payne at shellypayne@utk.edu

ARTISTS CIRCLE

Myrwood Besozzi
and Carol Beilharz
Alan Carmichael
and Cynthia Moxley
Kenneth and Jane Creed
Laura and Carl Eshbaugh
Pamela and James Given
Townes Lavidge Osborn
and Robert S. Marquis
Terry and Linda Tyler

PRODUCERS CIRCLE

David Andrews
Larry and Jeanie Brakebill
Peter and Sandra Campbell
Bonnie Carroll
and Roy Cooper
Elizabeth Carroll
Jimmy and Ileen Cheek
Elizabeth Craig
Joseph and Jayne De Fiore
Jeffrey and
Virginia Eberting
Stuart Elston
Maribeth and
Frederick Ergen
Susan and Kent Farris
Sandra and Howard Filston
Rosemary Gilliam
Charlotte Headrick
Amy Morris Hess
John and Susan Hoffman
Julie Howard and
Ted Flickinger
Susan and Jerry Kornegay
Robert and
Brenda Madigan
Neil McBride and Maureen
Dunn McBride
Sheena McCall

Arthur and Marsha Mitchell
Margie Nichols Gill
and John Gill
Linda Norris
Hei and Stanley Park
Sara Phillips
Susan Sgarlat
and Charles Fels
Alice Torbett
Robin Turner
Lynn and Anthony Venafro
Nancy Voith and
Kenneth Stark
Donna Wertz
Dale and Wendy Wortham

DIRECTORS CIRCLE

Margaret and Carl Pierce
Donna Riggs

RISING STAR

Laura and Jeffery Allen
Misty Anderson
and John Tirro
Anne Armstrong
Anne Becker
Jeffrey and Nancy Becker
Julia and Gary Bentley
William and
Rebecca Brewer
John and Sandra Butler
Clay and Anita Davis
LeAnne Dougherty
Stanton and Alison Garner
Lauren and
Christopher Herbstritt
Jeffrey and Susan Kovac
Kathryn Lynch
Michael Higdon
Samantha Murphy
and Justin Roby

Drs. Bonnie Ownley
and Neil Quigley
Jack Singleton
Alexander Waters

LEADING PLAYER

Sandra and Jay Aldrich
Andrea Anderson
Pamela Bullock
Amy Caponetti and
Sam Gleason
Brooks and Karen Clark
Joan and Kenneth
Clevenger
Marianne Custer
Leann and James Dickson
Stuart and Janice Elston
Tim and Pat Ezzell
Tara and Scott Halstead
Michael and Nancy Lofaro
Calvin and
Rebecca MacLean
Francine Marasco
William and
Virginia Morrow
John North
Linda Parsons
Meredith Peccolo
and James Vaughan
Vladimir Protopopescu
Bryan and Brandi Self
Jan and Mary Simek
Mark Skillman
James Snider
and Theresa Tunnell
John and Delores Sorey
Pedro Tomás-Mitchell
and Roger Roark
Georgiana Vines
Elizabeth Williams

2025/2026

CORPORATE, FOUNDATION & GRANT PROFILES



The Shubert Foundation, Inc., was established in 1945 by Lee and J.J. Shubert, in memory of their brother Sam and is dedicated to sustaining and advancing the live performing arts in the United States, with a particular emphasis on theatre and a secondary focus on dance. They are the nation's largest funder dedicated to unrestricted funding of not-for-profit theatres, dance companies, professional theatre training programs and related service agencies. The Shubert Foundation is especially interested in providing support to professional resident theatre and dance companies that develop and produce new American work.



Knox County Tourism Consortium

The Clarence Brown Theatre is a proud member of the **Arts & Culture Alliance's Knox County Tourism Consortium**, joining with 24 arts and culture organizations who deliver more than 4,000 tourism geared events and activities. The visitors the consortium attracts to Knox County bring millions of dollars into the county as they patronize local restaurants, shops, vendors, and hotels. Pre-pandemic, the consortium attracted visitors from all fifty states and international visitors from more than 80 countries to Knox County, bringing nearly \$18 million into the county with them. Visitors from surrounding East Tennessee counties have added more than \$16 million. The consortium supports \$12 million in jobs and pays \$18 million more to local vendors.



The **Tennessee Arts Commission** was created in 1967 by the Tennessee General Assembly with the special mandate to stimulate and encourage the presentation of the visual, literary, music and performing arts and to encourage public interest in the cultural heritage of Tennessee. TN Arts Commission Governing Policies can be found here. The mission of the Tennessee Arts Commission is to cultivate the arts for the benefit of all Tennesseans and their communities. Our vision is a Tennessee where the arts inspire, connect and enhance everyday lives. The Commission is supported in part by the National Endowment for the Arts.



Pilot Company's mission is to make life better for America's drivers. With more than 650 locations nationwide, Pilot Company is the largest retail operator of travel centers in North America. At Pilot Company we believe it is essential

CORPORATE, FOUNDATION & GRANT PROFILE

to give back to the community. Our founder, Mr. James A. Haslam II, established our philanthropic spirit when he started the company in 1958. Our employees all take part in giving their time, talents and efforts to various organizations throughout the year. Together we work to make our communities better places to work, play and live. Visit www.pilotflyingj.com for more information.



First Horizon Bank is proud to support The Clarence Brown Theatre. For more than 160 years, our associates have delivered trusted financial solutions to individuals, families, and businesses across the Southeast. At First Horizon, we value relationships built on integrity and personalized service, ensuring our clients' financial goals are met with care and expertise. With deep roots in our neighborhoods, we are committed to investing in the vibrant communities we serve—including the creative spirit of theatre. Together, we strive to build a brighter future and inspire the talents that make our area unique. To learn more, visit firsthorizon.com.



City of Knoxville - Knoxville's roots run deep and strong. The city has served as the hub of the region since its founding in 1791. The best of its Appalachian heritage remains today — a strong work ethic, a family-centered community, and an intense respect for the natural beauty that envelopes the region. The metropolitan Knoxville area was ranked the "best place to live in the United States and Canada" among cities with a population of fewer than 1 million. The ranking came from the Millennium edition of Places Rated Almanac. The results confirmed what most in this area have known for a long time - Knoxville is one of the best cities in the country!

The **Mildred Haines and William Elijah Morris Lecture Endowment Fund** supports campus visits of lecturers and scholars in all disciplines in the College of Arts and Sciences. The dean of the college solicits proposals from departments and academic programs for the use of the funds, appoints an advisory committee to review and make recommendations regarding the proposals, and makes awards to the successful proposals. The advisory committee has a representative from the humanities, the social sciences, the natural sciences and the arts faculties of the college. The committee selects a chairperson from among its members. Committee members serve two-year terms and may be reappointed at the discretion of the dean.

CBT ADVISORY BOARD 2025/2026 OFFICERS AND MEMBERS

Alexander Waters, *Chair*

Will Brewer, *Chair Elect*

Margie Nichols, *At-Large*

Jennifer Banner

Season Bowers

Larry Brakebill

Will Brewer

Amy Caponetti

Lisa Carroll

Jeff Cheek

Brooks Clark

Katharine Pearson Criss

Leann Dickson

LeAnne Dougherty

Danielle Ely

Maribeth Ergen

Pamela Given

Amy Morris Hess

Michael Higdon

Julie Howard

Delphia Howze

Erica Lyon

Francine Marasco

Maureen Dunn McBride

Margie Nichols

Linda Norris

John North

Sara Phillips

Vladimir Protopopescu

Lee Riedinger

Tomi Robb

CortneyJo Sandidge

Susan Sgarlat

John Sorey

Pedro Tomás

Robin Turner

Georgiana Vines

Alexander Waters

Donna Wertz

Melanie Wood

Wendy Wortham

EMERITUS MEMBERS:

Joe De Fiore

Susan Farris

Sheena McCall

Townes Lavidge Osborn

EX-OFFICIO MEMBERS:

Kenneth Martin

Tom Cervone

Michael Jordan

Jan Simek

Stephanie Wall





**MILES OF
GOOD™**



FUELING THE ARTS AND THE AUDIENCE

Pilot Company is proud to support the Clarence Brown Theatre's mission to enrich local culture and guide the next generation of artists.

pilotcompany.com  

© 2025 Pilot Travel Centers LLC



ST  **WERS**
MACHINERY CORPORATION
FOUNDATION



Inspiring the next generation, one show at a time!

Clarence Brown Theatre's Season for Youth program brings 6,000+ students and teachers from 50+ schools throughout East Tennessee into the theatre each season with free or low-cost tickets, thanks to our generous donors and grants.

Theatre builds empathy, inspires creativity, and cultivates joy.

Every student deserves a seat!

Next year's reservations open May 12!

Email sfy_matinee@utk.edu to learn more.

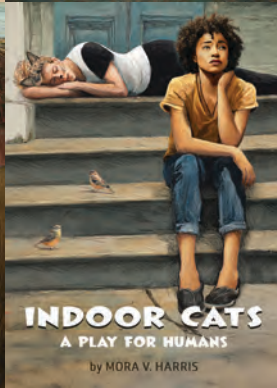
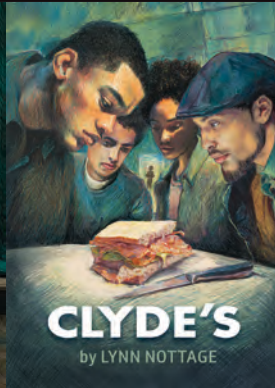
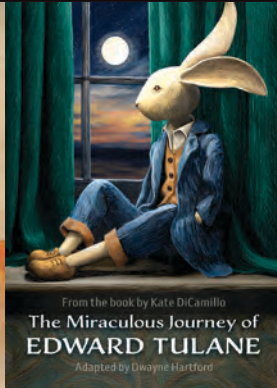


Scan to
learn more

clarencebrowntheatre.com/student-matinees

CLARENCE BROWN THEATRE

AT THE UNIVERSITY OF TENNESSEE



26
27 SEASON

**Season Tickets
On Sale May 5!**



← Scan to learn more

(865) 974-5161

www.clarencebrowtheatre.com