

**The Lab**  
Theatre

# FAILURE: A LOVE STORY

By Philip Dawkins

MAR 12 - APR 6

Directed by  
Casey Sams



**CLARENCE  
BROWN  
THEATRE**

AT THE UNIVERSITY OF TENNESSEE



Photo: Abigail McCarter in THE MODERS by Ella Marston

# CLARENCE BROWN THEATRE

AT THE UNIVERSITY OF TENNESSEE

**Your Theatre. Your Stories.**

***Celebrating more than 50-years  
of professional theatre!***

For more than 50 years, Clarence Brown Theatre (CBT) has told meaningful stories by providing world-class live theatre to nearly 40,000 patrons who visit us each season. The CBT season runs from September through May and features seven productions ranging from musicals to drama and provides a cultural resource and professional theatre for both the University of Tennessee Knoxville and the larger East Tennessee community.

865-974-5161  
clarencbrowntheatre.com



THE UNIVERSITY OF  
TENNESSEE  
KNOXVILLE

DEPARTMENT OF THEATRE

**MFA IN ACTING  
MFA IN DESIGN  
BA IN THEATRE**

**KENNETH MARTIN**

*Artistic Director,  
Department Head*

**TOM CERVONE**

*Managing Director*

865-974-6011  
theatre.utk.edu

# CLARENCE BROWN THEATRE

presents

## FAILURE: A LOVE STORY

By PHILIP DAWKINS

Directed by **Casey Sams**

Musical Director **Terry D. Alford**

Scenic Designer  
**Leilane Bertunes**

Costume Designer  
**Matthew Carl**

Lighting Designer  
**Miguel Santiago**

Sound Designer  
**Chance Beck**

Puppet Design and Construction  
**Michaela Lochen**

Voice and Text Director  
**Carol Mayo Jenkins**

Stage Manager  
**Belle Holmes**

Artistic Director, Department Head  
**Kenneth Martin**

Managing Director  
**Tom Cervone**

Production Manager  
**Susan L. McMillan**

Produced by special arrangement with Playscripts, Inc.  
([www.playscripts.com](http://www.playscripts.com))

---

*The video and/or audio recording of this performance by any means whatsoever is strictly prohibited.*

---

THE  
**SHUBERT**  
FOUNDATION INC.

Arts&Culture**Alliance**

**Knox County**  
Tourism Consortium



This project is being supported in whole or in part by federal award number 21.027 awarded to the City of Knoxville by the U.S. Department of the Treasury and the Arts & Culture Alliance.

Cover photo: Gray Lancaster; by Shawn Poynter

# ABOUT THE AUTHOR

**PHILIP DAWKINS** is a Chicago playwright and educator whose plays have been performed all over the world. His plays include *Failure: A Love Story* (Victory Gardens Theater), *Le Switch* (About Face Theatre, The Jungle), *The Homosexuals* (About Face Theater), *The Burn* (Steppenwolf for Young Audiences), *Dr. Seuss's The Sneetches*, *the Musical* with composer David Mallamud and *Spamtown, USA* (both with Children's Theater Company, Minneapolis), *The Gentleman Caller* (Raven Theatre, Chicago; Abingdon Theatre, NY), *Charm* (Northlight Theatre; MCC), *Miss Marx: Or The Involuntary Side Effect of Living* (Strawdog Theatre), and his solo play, *The Happiest Place on Earth* (Sideshow Theatre/Greenhouse Theater Center). Philip has won some awards and not won some others. He's been a fellow at the Hawthornden Castle International Retreat for Writers in Scotland and the MacDowell Colony in New Hampshire, and has taught playwriting at his alma mater, Loyola University Chicago, Northwestern University, Victory Gardens Theater and for the Playwrights' Center in Minneapolis. Many of Philip's plays, including his scripts for young performers, are available through Dramatists Play Service, Playscripts, Inc. and Dramatic Publishing. He is currently working on an American English translation of Michel Tremblay's *Messe Solennelle Pour Une Pleine Lune D'été* for Sideshow Theatre.

## DIRECTOR'S NOTE



Casey Sams

In my acting classes I regularly start the semester teaching "The Failure Bow." When a student feels like they've really made a hash of something, they can stand in the center of the room, throw their hands up in the air, and proclaim "I Failed!!" Then the rest of the class applauds and celebrates with them. No one bows though, despite the name Failure Bow.

The point is to celebrate failure, not bow down to it. Failure happens when someone tries to do something hard, and that is worth celebrating. But failure isn't king – it doesn't get to tell us what to do. We don't stop and give in just because we've failed. We try something new!

Fear of failure is natural. But it's not very helpful. 'Failure: A Love Story' is exactly what it says it is – a love story to failure and the beautiful things that come in its aftermath.

Enjoy!

# THE CAST

NELLY FAIL ..... **Mia Eller**  
JENNY JUNE FAIL.....**Juliana Maestri**  
GERTRUDE FAIL (GERTY).....**McKenzie Jordan**  
MORTIMER MORTIMER.....**Samuel R. McRary**  
JOHN N. FAIL ..... **J.D. Joiner**  
CHORUS ..... **Samuel Choi**  
CHORUS ..... **Nevaeh Daniel**  
CHORUS ..... **Hogan Wayland**

**Run time:**

100 minutes with no intermission

**Advisories:**

Includes themes of death.

After the show, please take a moment to fill out a brief 5-minute survey [tiny.utk.edu/cbtsurvey](https://tiny.utk.edu/cbtsurvey) about your experiences at *Failure: A Love Story*. Your feedback helps us better know our audiences, offer more programming and increases funding opportunities for the CBT. **Thank you in advance!**

# COMMUNITY PARTNER



**Cattywampus Puppet Council** is a 501c3 community-based arts organization rooted in Knoxville, TN that creates tools for resilience through play, celebration arts, and storytelling to transform individuals and communities.

Throughout the past 9 years, our intergenerational collective of artists, performers, teachers, musicians, and community organizers have brought innovative theater, youth programming, people-powered parades, and giant puppets to communities across East Tennessee and the South.

## Save-the-Date for Cattywampus's 8th annual Parade & Block Party!

Sunday, May 18th Info about upcoming art making workshops or to register.



[www.cattywampuspuppets.org](http://www.cattywampuspuppets.org)





**JULY  
7-18**

*Reservations open soon*

**CBT ACTING  
WORKSHOP**

SUMMER



**ROCKIN' EARS  
FOR 42 YEARS!**

WUTK offers an eclectic mix of music, including new releases, indie rock, alternative rock, classic alternatives, punk, reggae, hip hop, Americana, EDM, Jam Bands, local music, concert info, giveaways, and even sports, local talk & feature shows, and news.

**On the Air and Streaming 24.7.365  
WUTKRADIO.COM**

or listen on your free TuneIn app 

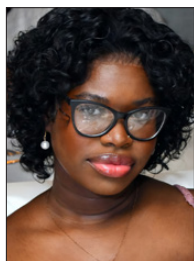


# THE ACTORS



**SAMUEL CHOI**  
(Chorus) is a first-year Neuroscience major from Houston, TX, and is excited to be making his Clarence Brown debut in *Failure: A Love Story*. Samuel would like to thank his family

who got him here and his friends who supported him along the way. Enjoy the show!



**NEVAEH DANIEL**  
(Chorus) would like to welcome and thank you for attending what will be her last UTK performance as an enrolled student. She is so excited to showcase the years of hard work she has put

in, that has awarded her this opportunity. You might recognize Nevaeh from her work with Tennessee Stage Company in *Much Ado About Nothing* as Hero or *A Midsummer Night's Dream* as Hermia; or maybe you caught her as Opal in the River and Rail theatre's production of the Pulitzer award winning play *Fat Ham*. No matter where, or if, you have seen her, she hopes you enjoy her performance nonetheless and perhaps even continue to follow her journey.



**MIA ELLER**  
(Nelly Fail) is a sophomore History and Theatre major at the University of Tennessee. She is beyond grateful to be returning to the Lab stage after appearing in *The Moors* (u/s

Marjory). In the past few years, she has also appeared in shows such as *Play On!*, *Radium Girls*, and *Mamma Mia!*. She would like to extend her sincerest gratitude to Casey Sams, her friends, and her family for constantly supporting her.



**J.D. JOINER**  
(John N. Fail) is extremely grateful and proud to be a part of his first Lab Theatre production, but also his last show as an undergraduate student at UT! He will be graduating with a

major in Theatre and a minor in History. He would like to thank the director for giving him this opportunity and his parents for their support.



# THE ACTORS



## **MCKENZIE JORDAN**

(Gertrude Fail/Gerty) is a third-year BA student studying Theatre and Political Science at the University of Tennessee. Previous

credits include *Anon(ymous)* and *The Moors* at the Clarence Brown Theatre. She would like to thank her family and friends for their endless support and Casey Sams for trusting her to help tell this beautiful story.



## **JULIANA "JULIE" MAESTRI**

(Jenny June Fail) is so excited to be a part of CBT's family here in Knoxville! Dancing since the age of 5, Juliana has found a second home

on the stage. Her past credits include: Mrs. Dodds/Camper in *Percy Jackson: The Lightning Thief Musical* (2021), along with various dance productions with Vols en Pointe, KPDA, and TAME Dance Academy. In addition, Juliana has experience with crew and makeup backstage in previous productions. As she studies Elementary Education with a Theatre Minor here at UT, she's excited for her future as she works towards becoming a performing arts teacher!



## **SAMUEL R. MCRARY**

(Mortimer Mortimer) is very excited to be working with the Clarence Brown Theatre on the production of *Failure: A Love*

*Story*. He has gained his Associates in Theatre Performance at Pellissippi. He is currently in his second-year studying Theatre Technology at the University of Tennessee. He has worked on many productions with other companies in Knoxville including: *Godspell*, *Guys and Dolls*, *The Musical Comedy Murders of 1940*, *The Moors*, and *Anon(ymous)*. This experience is a huge step in helping him pursue a career in theatre. He is very appreciative of everyone who's supported him, and is very thankful for all he's learned through this production of *Failure: A Love Story*.



## **HOGAN WAYLAND**

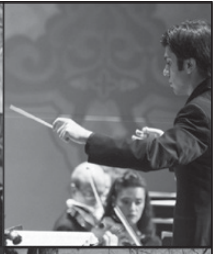
(Chorus) is excited to be part of this production! This is his sixth and final show at the Clarence Brown as an undergraduate student. He's

previously been seen in *HAIR* (Woof) and *A Christmas Carol 2023 & 2024* (Scadger) and more. He is grateful for his director Casey Sams, and for his wonderful family and friends for always supporting him!



**Penny4Arts** gives every child in Knox and surrounding counties an opportunity to attend arts and culture events/activities at the maximum cost of ONE PENNY (or FREE) when accompanied by a paying adult.

865-523-7543  
PENNY4ARTS.COM



AVAILABLE NOW AT YOUR COUNTY CLERK'S OFFICE  
**\$35**

# BACK THE ARTS WITH THE NEW ARTS PLATE



**SUPPORT ARTS IN YOUR SCHOOLS AND COMMUNITY**



No need to wait until your tags expire, you can change your license plate anytime. Fees will be prorated. For more information about specialty license plates, visit [tn.gov/revenue/vehicle](http://tn.gov/revenue/vehicle).



[tn.gov/arts](http://tn.gov/arts)

[tn4arts.org](http://tn4arts.org)

20 Years of Live Music

**WDVX**  
89.9 fm

**BLUE PLATE SPECIAL**

IN DOWNTOWN KNOXVILLE

A Free  
Live Radio  
Show!



12 Noon  
Mon-Sat




**KNOXVILLE**  Senior Financial Group  
Doing Goodness Differently

**BARLEY'S**


Available to Stream on  
etpbs Passport Nov. 18 2024

INSIDE THE MIND OF A GENIUS



**LEONARDO**  
"DA VINCI"

A FILM BY KEN BURNS,  
SARAH BURNS AND DAVID McMAHON

east  **PBS.**

Become a member today.  
[www.EastTennesseePBS.org](http://www.EastTennesseePBS.org)

**UT** Federal  
Credit  
Union



For *All* Who Love Tennessee

 **B97.5**

Commercial  
**FREE**  
**HOURS**



# THE ARTISTS



**CASEY SAMS**  
(Director) is Associate Department Head and Professor of Theatre, teaching Movement, Acting, Musical Theatre, and Dance to

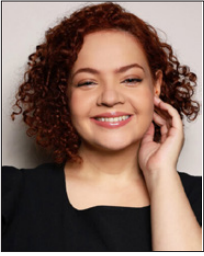
both undergraduate and graduate students. She earned her BA in Theatre and English Literature and her MS in Motor Learning and Control from Penn State. She is also a Certified Movement Analyst (CMA) in Laban Movement Analysis (LMA) from the Laban/Bartenieff Institute for Movement Studies. She has served on the faculty at Penn State, Interlochen Arts Camp, The Contemporary Art Center of Virginia, and The Governor's School for the Arts in Virginia. Prior to joining the faculty at UT, Casey served as the Education Director for Virginia Stage Company, where she created programming for students from pre-k to post-graduate. She has worked as a Director, Choreographer, Intimacy Choreographer, and Movement Coach at theatres across the country including The Clarence Brown Theatre, The Guthrie Theatre, Cincinnati Playhouse in the Park, St. Louis Repertory Theatre, The Roundhouse Theatre, Utah Shakespeare Festival, North Carolina Stage Company, PlayMakers Repertory, Virginia Stage Company, Pennsylvania Musical Theatre, The Knoxville Opera Company, and Vermont Stage Company. She is also a meditation teacher with the American Meditation Society and Koru Mindfulness.



**TERRY D. ALFORD**  
(Musical Director) Terry is a Teaching Professor in Theatre and teaches Musical Theatre Performance and Honors Introduction

to the Theatre and Acting. Prior to joining the UT faculty, Mr. Alford held the positions of Director of Musical Theatre at The University of Tulsa, and Director of Musical Theatre at The University of Wisconsin at Stevens Point. He has worked professionally as a performer, director, musical director, and composer at theaters across the country, including the California Theatre Center, Madison Repertory, Omaha Playhouse, Augusta Barn, Fireside Theatre, Light Opera of Oklahoma, and the Clarence Brown Theatre. Terry has directed or musically directed numerous productions and has created the scores for four original musicals and a variety of chamber and vocal music pieces. He is a member of the Clarence Brown Professional Company and regularly directs and musically directs for the Clarence Brown Theatre. Terry is the director of the CBT Summer Acting Workshop and serves as co-facilitator of Outreach and Education hosting Theatre Tours and Talk Backs.

# THE ARTISTS



## LEILANE BETUNES

(Scenic Designer) is a designer, actor, director, playwright, and first-year Scenic Designer in the MFA program at the University of

Tennessee. Originally from São Paulo, Brazil, she is proud to create her first show at the Clarence Brown Lab Theatre. She holds a certificate in Acting, a bachelor's degree in Digital Design, and a graduate certificate in Acting and Directing. As a theatre artist, Leilane is the founder of "Inquietações Theatre Company" an independent theatre company in Brazil where she creates and performs her own plays like *Sereníssima?*, alongside her company. Some of her previous theatre credits involve collaboration with Dan Rosseto, a Brazilian playwright and director, in plays and musicals such as *Tribute to the Scoundrel*, *Chronicle of a Suburban Love*, *Rent*, *Rocky Horror Show*, and many others. As a visual artist, Leilane has had her watercolors exhibited in São Paulo, Rio de Janeiro, and at the International Salon of Contemporary Art at the Carrousel du Louvre in Paris.



## MATTHEW CARL

(Costume Designer) is a first-year Costume Design graduate student at the University. He is thrilled to be designing his first show in the Lab. Past design

credits include *Luchadora!*, *Dragons Love Tacos* (Orlando Family Stage); *La Cage Aux Folles*, *The 25th Annual Putnam County Spelling Bee* (Significant Productions). Associate and Assistant credits include

*Beautiful the Carole King Musical*, *Beauty and the Beast* (Paramount Theater); *Cinderella* (Drury Lane Oakbrook). Matthew has also served as a shopper for Parsons Mears Ltd, and Pinter Costumes shopping for multiple Broadway productions.



## MIGUEL SANTIAGO

(Lighting Designer) has worked in all aspects of theatre from performing to involvement on the technical side. He specializes in lighting

design and has worked as a designer on numerous shows, some of which include *Newsies*, *Sweeney Todd*, *Antigone*, *School of Rock*, *9 to 5*, *Tuck Everlasting* and *Bandstand*. He is a 3-time nominee for Best Lighting Design of a Musical by Broadway World. Miguel is a first-year graduate student at the University of Tennessee pursuing an MFA in Lighting Design. You can view more of his work at [migueljsantiago.com](http://migueljsantiago.com)



## CHANCE BECK

(Sound Designer) is a first-year Sound & Media Design graduate student at UT. *Failure: A Love Story* is their debut show here at the Clarence Brown

Theatre. Chance has previously worked with the local Tennessee theatre company River & Rail on *It's A Wonderful Life*. They come from The University of Southern Mississippi where they achieved their BFA in Theatre Design & Technology. Chance is beyond excited to bring this beautiful show to life and have greatly enjoyed the collaborative process with the other incredible artists on this production.

# THE ARTISTS



## **MICHAELA LOCHEN**

(Puppet Design and Construction) is a third-year Scenic Design MFA candidate at the University of Tennessee, Knoxville. She is originally from

St. Paul, Minnesota, and received a BFA in Scenic Design and a BA in Anthropology from the University of Minnesota Duluth in 2020. Recent credits include scenic designs for *Inherit the Wind* and *The Giver* at the Clarence Brown Theatre; *Newsies* at Artistry Theater and Visual Arts in Bloomington, MN; *It's a Wonderful Life: A Live Radio Play* at River & Rail in Knoxville, TN; *The Servant of Two Masters* at Lyric Arts in Anoka, MN; and *Million Dollar Quartet* at Peninsula Players Theatre in Fish Creek, WI. More of her work can be found at [michaelalochen.com](http://michaelalochen.com).



## **CAROL MAYO JENKINS**

(Voice and Text Director) is recently retired from the Theatre Department, but she is delighted to be back working

with the students on this beautiful play. The ability to bring stories, images and passion to life through the spoken word is the actor's craft, and working on that skill is a gift to any teacher. We have all grown from our experience with Philip Dawkins' rich and imaginative language. Enjoy!



## **BELLE HOLMES**

(Stage Manager) is a senior in the Theatre program here at UTK. She has previously assistant stage managed shows with the Clarence

Brown Theatre and the LAB including *Knoxville*, *Kinky Boots*, *The Giver*, *The Moors*, and *Hair*. This one is bittersweet as it's her last one before graduation. She would like to thank all of her mentors and professors that made sure she is well-prepared for the world. This show is for Granny; she can finally watch all the shows.



## **KENNETH MARTIN**

(Department Head, Artistic Director) is a proud member of United Scenic Artists and his scenic design work has been seen

at theatres such as the Kansas City Rep, Florida Rep, The New Theatre, Kansas City Actor's Theatre, Cleveland Ensemble, Ocean State Theatre and many others. His work in higher education spans four universities over 29 years.

# THE ARTISTS



**TOM CERVONE**  
(Managing Director)  
Tom is grateful and honored to serve the Clarence Brown Theatre as Managing Director. Cervone has also served as executive director

for both Dogwood Arts and the Historic Tennessee Theatre Foundation, but the CBT/UTK Theatre Department is Tom's administrative and artistic home. Cervone arrived in Knoxville in 1989 as an MFA candidate in acting and was hired in May of 1993 as the company manager, then promoted to managing director in 1995. And for his brief foray downtown, Tom has been in this chair, blissfully, ever since. Tom is and has been very active within the UTK community, having served as Exempt Staff Council chair for many years, co-chair of the LGBT Commission, a member of the Diversity Council and many other UTK organizations. Cervone is a long-time board member of the WordPlayers and continues to evangelize on behalf of the art and culture community locally and nationally. Tom received the Chancellor's Citation for Outstanding Service to the University in 2010. Cervone holds his undergraduate degree in Speech and English Education with an emphasis in Theatre from West Liberty University in West Virginia and a Master of Fine Arts and an MBA from UT. He is a graduate of and was selected as the Class Representative of the Leadership Knoxville class of 2011, the best class ever. Cervone was inducted into his undergraduate alma mater's class of 2015 Wall of Honor and was appointed by the Governor of WV in 2021 to serve as a member of the Board of Trustees of WLU.



**SUSAN L. MCMILLAN**  
(Production Manager)  
Susan is in her eleventh year as Production Manager at the CBT and UT Department of Theatre. In addition,

she teaches Stage Management. Prior, Susan was the Production Manager and Stage Management Instructor at the University of California, Santa Barbara, for 6 years. Susan is a member of Actors' Equity Association, and was a Stage Manager at the Oregon Shakespeare Festival for 18 years. Additionally, she has stage managed at the Guthrie Theatre, Shakespeare Theatre Company, Portland Center Stage, PCPA, Rogue Valley Opera, Portland Civic Theatre, and has toured to the Kennedy Center. Through science (B.S. degrees in Biochemistry and Biology from Oregon State University) and music (cellist), Susan found her way into theatre (Minor in Theatre from OSU). She is incredibly grateful for all the opportunities and adventures along the way, inspirational mentors, artistic and talented colleagues, amazing students, and the love and support of her family and friends. And very grateful for Molly – woof! This season is fully dedicated to her beloved, beautiful, and deeply missed mother, Grace – a shining light forever.

FROM  
**CHOPIN**  
TO  
**COLTRANE**  
TO  
**CITY HALL**

WUOT brings you the best of classical, jazz, and local news along with your favorite NPR programs. Tune in today at 91.9 FM, stream online at [WUOT.org](http://WUOT.org), or download the WUOT mobile app.

WUOT 91.9  
fm  
[wuot.org](http://wuot.org)  [@wuotfm](https://twitter.com/wuotfm)

npr



## ROTARY INSPIRING THE WORLD

Come and visit a Rotary Club of Knoxville meeting. We meet every Tuesday at noon at the Crowne Plaza Hotel, where we hear great speakers and enjoy social networking and camaraderie. Founded in 1915, we are Knoxville's oldest and largest service club, with around 150 members and always looking for more. The club is apolitical and secular, welcoming members from all communities. Each year our club:

- Awards \$20,000 college scholarships
- Recognizes two Knox County teachers with \$500 awards and \$250 gift certificates
- Supports End Polio Now, Rotary International's signature project
- Sustains clean water projects in 115 villages in Thailand

Learn more at [www.knoxvillerotary.org](http://www.knoxvillerotary.org)



# CONCESSIONS

## COOKIES



**Chocolate Chip Cookies** \$5  
classic recipe! — pack of 2

**Lemon Thumbprint Cookies** \$5  
shortbread cookies with  
lemon icing — pack of 3

## POPCORN



**Movie Theatre** \$4  
Extra buttery and deliciously  
salty popcorn

**Cheddar** \$4  
Rich and delicious cheddar cheese

## SNACKS

**Chips** \$2

**Candy** \$2

## MERCHANDISE

**Tumbler** \$5  
cold beverages only

**Travel Mug** \$7  
cold and hot beverages

## DRINKS



**Soft Drinks** \$2

**Bottled Water** \$2

**Coffee** regular | decaf \$2

**CLARENCE  
BROWN  
THEATRE**  
AT THE UNIVERSITY OF TENNESSEE

*We are proud to support Knoxville's  
small businesses.*

*Only beverages with lids  
are permitted inside the auditorium.*

# PRODUCTION CREW

## MANAGEMENT

Directing Assistant

**Abbigail Corwin**

Assistant Stage Manager

**Erica Zacharias**

## COSTUMES

Wardrobe Supervisor

**Amber Williams**

Assistant Wardrobe Supervisor

**Catherine York**

Wardrobe

**James Burnett**

## SCENERY

Deck Crew

**Kelsey Cain**

**Jesse Winningham**

## LIGHTING

Assistant Lighting Designer

**Kayla Moore**

Light Board Operator/  
Production Electrician

**Ali La Rosa**

## SOUND

Sound Board Operator

**Gwynevere Chaffin**

## CREW SWING

Assistant Stage Manager/Crew Swing

**Hudson Sheer**



The Lab Theatre provides an intimate theatre experience, located in the center of the University of Tennessee's Knoxville campus. Built in 1970 as part of the larger Clarence Brown Theatre building, The Lab Theatre is a 125-seat black box venue located in the heart of campus. Designed both as a theatre and to function as a classroom space for the department's acting classes, The Lab Theatre is home to our undergraduate and MFA students, and serves as an integral space for a variety of their projects and productions.

Drive smarter local marketing with insights and solutions from the USA TODAY NETWORK.

**The power of knowing you are doing things right.**

**LOCALiQ**  
PART OF THE USA TODAY NETWORK

[localiq.com](http://localiq.com)

# CBT PRODUCTION STAFF

## ADMINISTRATION

Artistic Director/Department Head -

**Kenneth Martin**

Managing Director - **Tom Cervone**

Associate Artistic Director - **Katie Lupica**

Marketing & Communications Director -

**Mindy Cooper**

Business Manager - **Tara Halstead**

Accounting Specialist - **Le Anna Jacobson**

Administrative Specialist - **Emily Pope**

General Manager - **Vickie Carter**

IT Specialist - **Mark Spurlock**

Graphic Designer - **Julie Anna Summers**

## PATRON SERVICES

Manager of Ticketing and Sales -

**Sarah Burton**

Box Office Manager - **Brittany Spencer**

House Manager / Assistant Box Office

Manager - **Savannah Smith**

Audience Experience Manager -

**David Ratliff**

Patron Service Associates -

**George Bull, Desirea Burke, Payden Daniels, Tyler Duncan, Monica Gardiner, Max Jacob, Kevine Mahoro, Faith McManus, Breyana Meyer, Joseph Molitor, Shelby Perdue, Justin Spinella, Jalen Smith, Lillian Snead, Camden Tripp, Sarah Wahrmond, Madison Wall, Sierra Woodard, and Jamison Yeager**

## ENGAGEMENT/DEVELOPMENT

External Relations Manager

**Shelly Payne**

Grants, Education, and

Outreach Manager

**Hana Sherman**

Tours, Workshops

**David Brian Alley**

Summer Acting Workshops, Talk Backs

**Terry D. Alford**

## PRODUCTION

Production Manager - **Susan L. McMillan**

Rental Coordinator/Assistant Production

Manager - **Phyllis Belanger**

Production Stage Manager - **Patrick Lanczki**

## COSTUMES

Costume Shop Manager - **Melissa Caldwell-Weddig**

Cutter/Draper - **Kyle Andrew Schellinger**

Costumers - **Amber Williams, Elizabeth Aaron,**

**Ellen Bebb, and Laura Clift**

Costume Assistants - **Alex Heder, Kaelyn Marie,**

**Matthew Carl, and Tori Niemiec**

Wigs - **Siobian Jones of The Mighty Wig**

Wig Assistants - **Laura Asmussen and Riya Golden**

## ELECTRICS

Electrics Shop Manager - **Travis Gaboda**

Lead Electrician - **Jon Mohrman**

Lighting Assistants - **Miguel Santiago, Dylan Tillery,**

**Amelia Payne, Bailee Boisclair, Joseph Coram,**

**Kayla Moore, and Josh Rodriguez**

## SCENERY

Technical Director - **Jason Fogarty**

Assistant Technical Director - **George Hairston**

Lead Carpenter - **Jerry D. Winkle**

Senior Carpenter - **Kyle L. Hooks**

Scene Shop Assistants - **Jeremiah Buckley,**

**Olivia Layman, Ava Longsworth-Orr,**

**Justice Morris, Ellie Roberts-Wolford,**

**and Baylee Seymore**

Scenic Charge Artist - **Isabel Isaac**

Scenic Artist - **Sophie Smrcka and Alondra Barbosa**

## PROPERTIES

Props Supervisor/Props Designer - **Christy Fogarty**

Lead Properties Artisan - **Sarah Gaboda**

Properties Carpenter - **Becca Stockhaus**

Properties Assistants - **Kylie Cherry,**

**Caroline Elliot, Benjamin Miller, Baylee Seymore**

**and Quinn Tomlinson**

## SOUND

Sound and Video Manager - **Chris Walters**

Sound Assistants - **Chance Beck, Allison Bucher,**

**Elisabeth Dupuy and Amoirie Perteet**

# ABOUT CLARENCE BROWN THEATRE



***Celebrating more than 50 years of professional theatre!***

## DID YOU KNOW?

**3** Venues - CBT Mainstage, Lab Theatre  
\* Jenny Boyd Carousel Theatre - Fall 2025

**7** Productions/200+ Performance Aug- May

**16** Faculty

**22** Graduate Students

**35** Staff

**100** Undergraduate Students

**125** Seats in the Lab Theatre

**225+** Artists Each Season

**500+** Individual, Corporation,  
& Foundation Support

**550** Seats in the Clarence Brown Theatre

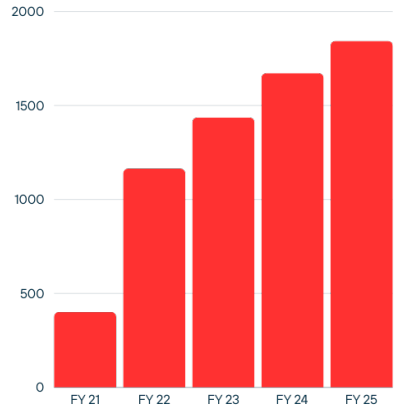
## PATRONS / YEAR (2023 - 2024)

**35,000+** Patrons Attending

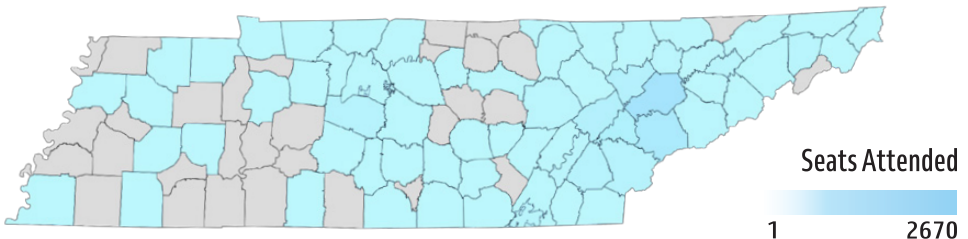
**6,000+** Students from 50+ schools

**2,700** Season Subscribers

**75%** Live in Knoxville



## 2023/2024 CBT Attendees by County



Photos top L to R: Aleah Vassell in HAIR; Jacob Leon, Jasmine R. Handy, Rachel Darden, Allison Bunch and Drew Drake in THE GIVER; Chris Verrier in ADAPTIVE RADIATION; Cecilia Iole and James Onstad in CANDIDE; Omari Collins in KINKY BOOTS; By Brynn Yeager and Ella Marston

CLARENCE BROWN THEATRE  
**SOCIETY**

Members of the CBT Society provide vital investments for the Clarence Brown Theatre's programs and activities year after year, all while receiving VIP treatment in return. Become a member today and make a difference in the next generation of theatre artists! For corrections to your acknowledgement name, please contact Shelly Payne at shellypayne@utk.edu

**ARTISTS CIRCLE**

Pamela and James Given  
Townes Lavidge Osborn  
and Robert S. Marquis  
Hei Park  
Linda and Terry Tyler

**PRODUCERS  
CIRCLE**

Dr. John M. and  
Connie L. Begovich  
Carol Beilharz  
and Myrwood Besozzi  
Larry and Jeanie Brakebill  
Peter and Sandra Campbell  
Bonnie Carroll  
Elizabeth Carroll  
Jimmy and Ileen Cheek  
Elizabeth Craig  
Nancy Duckles and  
Cameron Sears  
Jeffrey Eberting  
Vickie Ellis  
Susan Farris  
Howard Filston  
Drs. Joseph C.  
and Jayne C. De Fiore  
Stanton and Alison Garner  
Margie Nichols Gill  
and John Gill  
Rosemary Gilliam  
Amy Morris Hess  
John and Susan Hoffman

Julie Howard and  
Ted Flickinger  
Susan and Jerry Kornegay  
Drs. Theresa Lee Love  
and Jacob F. Love  
Erica Lyon and Dylan Jones  
Robert Madigan  
Maureen Dunn McBride  
and Neil G. McBride  
Martha McCampbell  
Arthur and Marsha Mitchell  
Linda Norris  
Dr. Lee Riedinger  
and Mary Zuhr  
Patricia Roux-Sharp  
Susan Sgarlat  
Sandra Stoutt  
Lynn Venafro  
Capt. Kenneth Stark  
and Nancy Voith  
Donna Wertz  
Wendy Wortham

**DIRECTORS  
CIRCLE**

Sara Phillips  
Donna Riggs  
Jeffrey Smith

**RISING STAR**

Misty Anderson  
Julia Bentley

John Bushore  
John Butler  
Leann Dickson  
Steve Drevik  
Lauren and  
Christopher Herbstritt  
Jeffrey Kovac  
Samantha Murphy  
Alexander Waters

**LEADING  
PLAYER**

Jay and Sandra Aldrich  
Andrea Anderson  
Lauren Chiles  
Brooks and Karen Clark  
Joan Clevenger  
Michael Combs  
Danielle Ely  
Maira Ely  
Tim Ezzell  
Tara Halstead  
Dennis Hayward  
Julie Lohnes  
Cal and Rebecca MacLean  
William Morrow  
John North  
Bonnie Ownley  
Linda Phillips  
Dave Snider  
Robert Trigiano  
Jessica Tucker  
Georgiana Vines

# CLARENCE BROWN THEATRE

AT THE UNIVERSITY OF TENNESSEE

## CBT ADVISORY BOARD 2024/2025 OFFICERS AND MEMBERS

**Alexander Waters** - *Chair*

**Julie Howard** - *Immediate Past Chair*

**Margie Nichols** - *At-Large*

**Will Brewer** - *At-Large*

Jennifer Banner

Larry Brakebill

Will Brewer

Amy Caponetti

Lisa Carroll

Jeff Cheek

Brooks Clark

Katharine Pearson Criss

Leann Dickson

LeAnne Dougherty

Danielle Ely

Pamela Given

Amy Morris Hess

Michael Higdon

Julie Howard

Delphia Howze

Erica Lyon

Maureen Dunn McBride

Margie Nichols

Linda Norris

John North

Sara Phillips

Vladimir Protopopescu

Lee Riedinger

Tomi Robb

CortneyJo Sandidge

Susan Sgarlat

John Sorey

Pedro Tomás

Alice Torbett

Robin Turner

Terry Tyler

Georgiana Vines

Alexander Waters

Donna Wertz

Melanie Wood

Wendy Wortham

### EMERITUS MEMBERS:

Joe De Fiore

Susan Farris

Sheena McCall

Townes Lavidge Osborn

### EX-OFFICIO MEMBERS:

Kenneth Martin

Tom Cervone

Jessi Arndis

Jan Simek

Stephanie Wall

# Fueling the Arts and the Audience



Pilot Company is proud to support the Clarence Brown Theatre's mission to enrich local culture and guide the next generation of artists.

**Pilot**<sup>®</sup>  
COMPANY

# 10 WEATHER IMPACT ALERT

TRACK THE **IMPACT**. BE **PREPARED**. STAY **SAFE**.

## STEP 1

DOWNLOAD THE  
10NEWS APP

## STEP 2

ASSEMBLE A  
WEATHER IMPACT KIT

## STEP 3

HAVE AN  
EMERGENCY PLAN

DOWNLOAD THE  
10NEWS APP NOW



GET **WEATHER IMPACT DAY**  
**ALERTS**, FORECASTS, AND UPDATES.

Stream newscasts on +app on **Roku**   Watch on **Apple TV**



# CBT THANK YOU

Every gift, big or small, makes an impact on our students, our faculty and staff, the Clarence Brown Theatre, and the arts in this community. No matter the fund, we wanted to say thank you to our supporters. Contributions listed below are through December 2024. For corrections to your acknowledgement name, please contact Shelly Payne at [shellypayne@utk.edu](mailto:shellypayne@utk.edu)

Jay and Sandra Aldrich  
Ronald Alexander  
David Alley  
Robert Alley  
Virginia St. Ana  
Andrea Anderson  
Misty Anderson  
Barbara and Steve Apking  
Anne Armstrong  
Lucia and Doug Ashworth  
Jamie Ayres  
Callie Bacon  
Leslie Badaines  
Jennifer Banner  
Anne Becker  
Dr. John M. and  
    Connie L. Begovich  
Carol Beilharz and  
    Myrwood Besozzi  
Phyllis Belanger  
E. Bell and Rose Bell  
Ivan Beltz and Donna Davis  
Shawn Benson  
Julia Bentley  
Scott Bishop  
Larry Bounds  
Randy and Jenny Boyd  
Charles Brakebill  
Christopher Brakebill  
Larry and Jeanie Brakebill  
David Brandes  
William Brewer II  
Jill Brock  
Kathleen Buckley  
John Bushore and  
    Elizabeth Haughton  
John and Sandra Butler  
Kieran Byrd

Peter and Sandra Campbell  
Amy Caponetti  
Kimberly and David Cardwell  
Cynthia Moxley and  
    Alan Carmichael  
Fay Carr  
Fany Carrera  
Bonnie Carroll  
Bonnie Carroll and Roy Cooper  
Elizabeth Carroll  
Thomas Cervone and  
    Susan Creswell  
Jeffrey Cheek  
Jimmy and Ileen Cheek  
Weiwei Chen  
Lauren Chiles  
Brooks and Karen Clark  
Joan Clevenger  
Michael Combs  
Robin Conklin  
Marcia Cook  
James and Sheila Cooper  
Elizabeth Craig  
Betsey Creekmore  
Katharine Pearson Criss  
Janice Crockett  
Reid and Olga Crumpton  
Drs. Joseph C. and  
    Jayne C. De Fiore  
Chris Deatherage  
Nancy DeCosta  
Gina Di Salvo and Jeffrey Tinley  
Diana Dickey  
Leann Dickson  
Camelia Dougherty  
Steve Drevik  
Nancy Duckles and  
    Cameron Sears

Jan Duncan  
Donald Dunning Jr.  
Jeffrey and Virginia Eberting  
Vickie Ellis  
Danielle Ely  
Moira Ely  
Tim Ezzell  
Susan Farris  
Norman Featherston  
Joseph Ferguson  
Howard Filston and  
    Sandra Stoutt  
Craig Fitzhugh  
Christy and Jason Fogarty  
William and Dianne France  
Debra Freeberg  
Kevin Galbreath  
Brian and Heidi Gard  
Stanton and Alison Garner  
Mark and Nan Gaylord  
Margie Nichols Gill and John Gill  
Rosemary Gilliam  
Pamela and James Given  
Chad Goldman  
Tara and Scott Halstead  
Katie Harrill  
Haslam Family Foundation Inc.  
Dennis Hayward  
Charlotte Headrick  
Joan and Merrit Heminway  
Lauren and  
    Christopner Herbstritt  
William Herriage  
Amy Morris Hess  
John and Susan Hoffman  
John Hoffman  
Charlotte Holland  
Mary Hollenbeck

# CBT THANK YOU

Thomas Hollenbeck  
Marilyn and Lyn Hollis  
Sandra Holub  
Lila Honaker  
Julie Howard and  
Ted Flickinger  
Richard Christensen and  
Beth Howe-Christensen  
Leigh Hruby  
Lori Ingle  
Lyle Irish  
Elisabeth Jackson  
Larsen Jay  
Carol Mayo Jenkins  
Gretchen Burleigh-Johnson  
Arthur Jones  
Debbie Jones  
Lucy Keh  
Presley Keith  
Philip King III  
Andrea Kline  
Mary and James Kois  
Susan and Jerry Kornegay  
Jeffrey and Susan Kovac  
Robert Lederer  
Drs. Theresa Lee Love  
and Jacob F. Love  
Michael and Nancy Lofaro  
Julie Lohnes  
Mary Long  
Laura Lucas  
Erica Lyon and Dylan Jones  
Beauvais Lyons and Diane Fox  
Cal and Rebecca MacLean  
Brenda and Robert Madigan  
Charles and Nancy Maland  
Stephen Mangum  
Francine Marasco  
Townes Lavidge Osborn  
and Robert Marquis  
Julia and Ken Martin  
Stephen Martin  
Maureen Dunn McBride  
and Neil G. McBride  
Rose Mary McCall  
Martha McCampbell  
Peter Mckee  
Susan McMillan  
Peg and Tom Mercier  
Amanda Middleton  
Gary Miller  
Arthur and Marsha Mitchell  
Mark Mitchum  
Carl Moore Jr.  
Jane Moore  
William Morrow  
Robert Moss  
Samantha Murphy  
Mildred Myers  
James Newburn  
Margie Nichols Gill and  
John Gill  
Linda Norris  
Margaret Norris  
Carman North and  
Christopher Lowe  
John North  
Michael Nunley and  
Terry Alford  
Estate of Jean C. Ogle  
Terry Olberding  
Townes Lavidge Osborn  
and Robert S. Marquis  
Bonnie Ownley  
Hei and Stanley Park  
Kendall Parrott  
Joseph and Shelly Payne  
Meredith Peccolo and  
James Vaughan  
Brian Pendleton  
G. Phillips  
Linda Phillips  
Pamela and G. Michael Phillips  
Sara Phillips  
Christopher Pickart  
David Pollard Jr.  
Arnold Pomerance  
Amy Pope  
Vladimir Protopopescu  
Sharon Pryse  
Betsy Quinn  
David Ratliff  
Charles Reiss  
Dr. Lee Riedinger and  
Mary Zuhr  
Donna Riggs  
Mary and Rob Ritchie  
Lauren Roark and  
Spencer Christensen  
Deborah Rodday  
Patricia Roux-Sharp  
Philip Royer  
David and Nancy Rutherford  
Cortney Jo Sandidge  
Eric Schmidt  
Gerhardt Schneider  
Bryan and Brandi Self  
Susan Sgarlat and Charles Fels  
Patricia Roux-Sharp  
Andrew Sheehy  
Hana and Steven Sherman  
Keith Shope Sr.  
Shubert Foundation, Inc.  
Jan Simek  
Melinda and James Simmons  
John Sipes  
Kerstin Kilgo Sisco  
Stephanie Slater  
Shane Sloan  
Jeffrey Smith  
Dave Snider  
John and Delores Sorey  
Julie and Jerry Sosebee  
Mark Spurlock  
Morgan Stanley  
Bob and Marcia Stewart

# CBT THANK YOU

Nancy Stewart  
Robert Stocks  
Dr. Howard C. Filston  
and Sandra K. Stoutt  
Elizabeth and Wes Stowers  
Harry Stowers  
Stowers Machinery  
Foundation, Inc.  
Julie Anna Summers  
Brooke Swart  
Tyler Tallent  
Lisa Thomas  
Devon Thompson  
Sam Tipton Jr.  
Pedro Tomás-Mitchell  
and Roger Roark  
Alice Torbett  
Robert Trigiano  
Jessica Tucker  
Robin Turner  
Linda and Terry Tyler  
Karen Valero  
Lynn and Anthony Venafro  
Janna de Vente  
Georgiana Vines  
Capt. Kenneth Stark  
and Nancy Voith  
Stephanie Wall  
Christopher Wallace  
William and Sara Walter  
Sharon Ward  
Alexander Waters  
Brent Waugh  
Donna Wertz  
Donald White  
Amber Williams  
Tammie Williams  
Timothy Williams  
Rhonda and Douglas Wilson  
Travis Wilson  
Melanie Wood

Dr. Dale C. and  
Wendy Wortham  
Kenton Yeager and Casey Sams  
Cheryl Zamora

## **MARIAN BROWN'S CIRCLE**

Pandy Anderson  
David Andrews  
Jeannette Brown  
Amber Bilderback  
Dennis Bussell  
Christopher Clark  
Greg Congleton  
Mitzi Congleton  
Steve Drevik  
Vickie Ellis  
Deborah Emery  
Mardel Fehrenbach  
Jim Given  
Pamela Given  
Gretchen Hartmann  
John Hoffman  
Julie Howard  
Virginia Kerwin  
Jerry Kornegay  
Susan Kornegay  
Sharon Kreis  
Steve Krempasky  
Robert Lacy  
Stephen LaVie  
Erica Lyon  
Francine Marasco  
Elizabeth Matlock  
Vanessa McAfee  
Maureen McBride  
Sheena McCall  
Martha McCampbell  
Margie Nichols

Linda Norris  
Hei Park  
Sara Phillips  
Elizabeth Pollock  
Donna Riggs  
Carol Shaffer  
Helen Sirett  
Helen Tews  
Nadine Trainer  
Jessica Tucker  
Linda Tyler  
Terry Tyler  
Georgiana Vines  
Nancy Voith  
Donna Wertz

## **CORPORATE, FOUNDATION AND GRANT SUPPORT**

Arts & Cultural Alliance  
City of Knoxville  
The Department of  
the Treasury  
Mildred Haines and  
William Elijah Morris  
Lecture Endowment Fund  
Knox County  
Knox County Tourism  
Consortium  
Merchant & Gould  
Pilot Company  
Rotary Club of Knoxville  
Tennessee Arts Commission  
The Roy Cockrum Foundation  
The Shubert Foundation, Inc.  
UT Federal Credit Union  
UT Institute of American Civics

# 2024/2025

## FOUNDATION & GRANT PROFILES



Founded in 2014 by Roy Cockrum and Benita Hofstetter Koman with winnings from Mr. Cockrum's Powerball lottery

jackpot, the Foundation's mission is to award grants to support world-class performing arts projects in not-for-profit professional theatres throughout America. Since 2014, 39 flagship American theaters and performing arts organizations have received major grants from the Foundation.



**The Shubert Foundation, Inc.**, was established in 1945 by Lee

and J.J. Shubert, in memory of their brother Sam and is dedicated to sustaining and advancing the live performing arts in the United States, with a particular emphasis on theatre and a secondary focus on dance. They are the nation's largest funder dedicated to unrestricted funding of not-for-profit theatres, dance companies, professional theatre training programs and related service agencies. The Shubert Foundation is especially interested in providing support to professional resident theatre and dance companies that develop and produce new American work.



### **Knox County Tourism Consortium**

The Clarence Brown Theatre is a proud member of the **Arts & Culture Alliance's Knox County Tourism Consortium**, joining

with 24 arts and culture organizations who deliver more than 4,000 tourism geared events and activities. The visitors the consortium attracts to Knox County bring millions of dollars into the county as they patronize local restaurants, shops, vendors, and hotels. Pre-pandemic, the consortium attracted visitors from all fifty states and international visitors from more

than 80 countries to Knox County, bringing nearly \$18 million into the county with them. Visitors from surrounding East Tennessee counties have added more than \$16 million. The consortium supports \$12 million in jobs and pays \$18 million more to local vendors.



**Knox County** is a county in the U.S. state of Tennessee. As of the 2010 census, the population is 432,226. Its county seat and largest city is Knoxville. The county is at the geographical center

of the Great Valley of East Tennessee. Near the heart of the county is the origin of the Tennessee River at the union of the Holston and French Broad Rivers. Knox County was created on June 11, 1792 by Governor William Blount from parts of Greene and Hawkins counties, and has the distinction of being one of only eight counties created during territorial administration. It is one of nine United States counties named for American Revolutionary War general and first United States Secretary of War Henry Knox. Parts of Knox County later became Blount (1795), Anderson (1801), Roane (1801), and Union (1850) counties.



**The Department of the Treasury** is the executive agency responsible for promoting economic prosperity and ensuring the financial

security of the United States. The Department is responsible for a wide range of activities such as advising the President on economic and financial issues, encouraging sustainable economic growth, and fostering improved governance in financial institutions. The Department of the Treasury operates and maintains systems that are critical to the nation's financial infrastructure, such as the production of coin and currency, the disbursement of payments to the American public, revenue collection, and the borrowing of funds necessary to run the federal government. The Department works with other federal agencies, foreign governments, and international financial institutions to encourage global economic growth, raise standards of living, and to the extent possible, predict and prevent

economic and financial crises. The Treasury Department also performs a critical and far-reaching role in enhancing national security by implementing economic sanctions against foreign threats to the U.S., identifying and targeting the financial support networks of national security threats, and improving the safeguards of our financial systems.



**Pilot Company's** mission is to make life better for America's drivers. With more

than 650 locations nationwide, Pilot Company is the largest retail operator of travel centers in North America. At Pilot Company we believe it is essential to give back to the community. Our founder, Mr. James A. Haslam II, established our philanthropic spirit when he started the company in 1958. Our employees all take part in giving their time, talents and efforts to various organizations throughout the year. Together we work to make our communities better places to work, play and live. Visit [www.pilotflyingj.com](http://www.pilotflyingj.com) for more information.



**City of Knoxville -** Knoxville's roots run deep and strong. The city has served as the hub of the region since its founding in 1791. The

best of its Appalachian heritage remains today — a strong work ethic, a family-centered community, and an intense respect for the natural beauty that envelops the region. The metropolitan Knoxville area was ranked the "best place to live in the United States and Canada" among cities with a population of fewer than 1 million. The ranking came from the Millennium edition of Places Rated Almanac. The results confirmed what most in this area have known for a long time - Knoxville is one of the best cities in the country!



The **Tennessee Arts Commission**, was created in 1967 by the Tennessee General Assembly

with the special mandate to stimulate and encourage the presentation of the visual, literary, music and performing arts and to encourage public interest in the cultural heritage of Tennessee. TN Arts

Commission Governing Policies can be found here. The mission of the Tennessee Arts Commission is to cultivate the arts for the benefit of all Tennesseans and their communities. Our vision is a Tennessee where the arts inspire, connect and enhance everyday lives. The Commission is supported by in part by the National Endowment for the Arts.

**The Mildred Haines and William Elijah Morris Lecture Endowment** supports campus visits of lecturers and scholars in all disciplines in the College of Arts and Sciences. The dean of the college solicits proposals from departments and academic programs for the use of the funds, appoints an advisory committee to review and make recommendations regarding the proposals, and makes awards to the successful proposals. The advisory committee has a representative from the humanities, the social sciences, the natural sciences and the arts faculties of the college. The committee selects a chairperson from among its members. Committee members serve two-year terms and may be reappointed at the discretion of the dean.



**Institute of American Civics -** In a time of proliferating distrust and political polarization, the Institute of American Civics housed in The Baker School of Public Policy and Public

Affairs presents a remarkable opportunity to address these challenges, beginning with undergraduates on the University of Tennessee, Knoxville, campus and then extending more broadly to the entire UT system and to the State of Tennessee as a whole. The institute is committed to improving civic knowledge and civil discourse through courses, student programs, public events, and K-12 outreach. With a strong bipartisan backing, the 112th Tennessee General Assembly created the Institute of American Civics to strengthen civic education and participation while reviving thoughtfulness, civility, and respect for opposing viewpoints in national discourse.

# CLARENCE BROWN THEATRE

## THE PLAY THAT GOES WRONG<sup>G</sup>

By Jonathan Sayer, Henry Shields, and Henry Lewis

**APRIL 16 - MAY 4**

Welcome to the opening night of 'The Murder at Haversham Manor', where things go from not very good to an utter disaster. 'The Play That Goes Wrong' is an ill-fated play-within-a-play, set on the opening night of the Cornley Drama Society's newest production. The troupe's ambitious whodunit has everything you never want in a show: falling props, collapsing scenery, an unconscious leading lady, a corpse that can't play dead, and actors who trip over everything... including their lines. Come see why this how has been called "the funniest play Broadway has ever seen!" (*Huffington Post*)

**BUY TICKETS**





# THE *Jenny Boyd* CAROUSEL THEATRE

From Award Winning productions to commissioning World Premieres, the Carousel continues to impact our community.

Respecting the past, recognizing the present, and revealing the future. Join the legacy of the Carousel by helping us support the future of the new Jenny Boyd Carousel Theatre today!

[LEARN MORE](#)

Rendering by: Sanders Pace Architecture