

FAILURE: A LOVE STORY

By Philip Dawkins

MAR 12 - APR 6

Directed by
Casey Sams



**CLARENCE
BROWN
THEATRE**

AT THE UNIVERSITY OF TENNESSEE



Photo: Abigail McCarter in *THE MOORS* by Ella Marston

CLARENCE BROWN THEATRE

AT THE UNIVERSITY OF TENNESSEE

Your Theatre. Your Stories.

***Celebrating more than 50-years
of professional theatre!***

For more than 50 years, Clarence Brown Theatre (CBT) has told meaningful stories by providing world-class live theatre to nearly 40,000 patrons who visit us each season. The CBT season runs from September through May and features seven productions ranging from musicals to drama and provides a cultural resource and professional theatre for both the University of Tennessee Knoxville and the larger East Tennessee community.

865-974-5161
clarencebrowntheatre.com



THE UNIVERSITY OF
TENNESSEE
KNOXVILLE

DEPARTMENT OF THEATRE

**MFA IN ACTING
MFA IN DESIGN
BA IN THEATRE**

KENNETH MARTIN
*Artistic Director,
Department Head*

TOM CERVONE
Managing Director

865-974-6011
theatre.utk.edu

CLARENCE BROWN THEATRE

presents

FAILURE: A LOVE STORY

By PHILIP DAWKINS

Directed by **Casey Sams**

Musical Director **Terry D. Alford**

Scenic Designer
Leilane Bertunes

Costume Designer
Matthew Carl

Lighting Designer
Miguel Santiago

Sound Designer
Chance Beck

Puppet Design and Construction
Michaela Lochen

Voice and Text Director
Carol Mayo Jenkins

Stage Manager
Belle Holmes

Artistic Director, Department Head
Kenneth Martin

Managing Director
Tom Cervone

Production Manager
Susan L. McMillan

Produced by special arrangement with Playscripts, Inc.
(www.playscripts.com)

The video and/or audio recording of this performance by any means whatsoever is strictly prohibited.



**Knox County
Tourism Consortium**



This project is being supported in whole or in part by federal award number 21.027 awarded to the City of Knoxville by the U.S. Department of the Treasury and the Arts & Culture Alliance.

Cover photo: Gray Lancaster; by Shawn Poynter

ABOUT THE AUTHOR

PHILIP DAWKINS is a Chicago playwright and educator whose plays have been performed all over the world. His plays include *Failure: A Love Story* (Victory Gardens Theater), *Le Switch* (About Face Theatre, The Jungle), *The Homosexuals* (About Face Theater), *The Burn* (Steppenwolf for Young Audiences), *Dr. Seuss's The Sneetches, the Musical* with composer David Mallamud and *Spamtown, USA* (both with Children's Theater Company, Minneapolis), *The Gentleman Caller* (Raven Theatre, Chicago; Abingdon Theatre, NY), *Charm* (Northlight Theatre; MCC), *Miss Marx: Or The Involuntary Side Effect of Living* (Strawdog Theatre), and his solo play, *The Happiest Place on Earth* (Sideshow Theatre/Greenhouse Theater Center). Philip has won some awards and not won some others. He's been a fellow at the Hawthornden Castle International Retreat for Writers in Scotland and the MacDowell Colony in New Hampshire, and has taught playwriting at his alma mater, Loyola University Chicago, Northwestern University, Victory Gardens Theater and for the Playwrights' Center in Minneapolis. Many of Philip's plays, including his scripts for young performers, are available through Dramatists Play Service, Playscripts, Inc. and Dramatic Publishing. He is currently working on an American English translation of Michel Tremblay's *Messe Solennelle Pour Une Pleine Lune D'été* for Sideshow Theatre.

DIRECTOR'S NOTE



Casey Sams

In my acting classes I regularly start the semester teaching "The Failure Bow." When a student feels like they've really made a hash of something, they can stand in the center of the room, throw their hands up in the air, and proclaim "I Failed!!" Then the rest of the class applauds and celebrates with them. No one bows though, despite the name Failure Bow.

The point is to celebrate failure, not bow down to it. Failure happens when someone tries to do something hard, and that is worth celebrating. But failure isn't king – it doesn't get to tell us what to do. We don't stop and

give in just because we've failed. We try something new!

Fear of failure is natural. But it's not very helpful. 'Failure: A Love Story' is exactly what it says it is – a love story to failure and the beautiful things that come in its aftermath.

Enjoy!

THE CAST

NELLY FAIL **Mia Eller**
JENNY JUNE FAIL..... **Juliana Maestri**
GERTRUDE FAIL (GERTY) **McKenzie Jordan**
MORTIMER MORTIMER..... **Samuel R. McRary**
JOHN N. FAIL **J.D. Joiner**
CHORUS **Samuel Choi**
CHORUS **Nevaeh Daniel**
CHORUS **Hogan Wayland**

Run time:

100 minutes with no intermission

Advisories:

Includes themes of death and mentions of incest.

After the show, please take a moment to fill out a brief 5-minute survey
tiny.utk.edu/cbtsurvey about your experiences at ***Failure: A Love Story***.
Your feedback helps us better know our audiences, offer more programming
and increases funding opportunities for the CBT. **Thank you in advance!**

COMMUNITY PARTNER



Cattywampus Puppet Council is a 501c3 community-based arts organization rooted in Knoxville, TN that creates tools for resilience through play, celebration arts, and storytelling to transform individuals and communities.

Throughout the past 9 years, our intergenerational collective of artists, performers, teachers, musicians, and community organizers have brought innovative theater, youth programming, people-powered parades, and giant puppets to communities across East Tennessee and the South.

Save-the-Date for Cattywampus's 8th annual Parade & Block Party!

Sunday, May 18th Info about upcoming art making workshops or to register.



www.cattywampuspuppets.org





Reservations open soon



CBT ACTING WORKSHOP
SUMMER



WUTK offers an eclectic mix of music, including new releases, indie rock, alternative rock, classic alternatives, punk, reggae, hip hop, Americana, EDM, Jam Bands, local music, concert info, giveaways, and even sports, local talk & feature shows, and news.

or listen on your free TuneIn app 

THE ACTORS



SAMUEL CHOI

(Chorus) is a first-year Neuroscience major from Houston, TX, and is excited to be making his Clarence Brown debut in *Failure: A Love Story*. Samuel would like to thank his family

who got him here and his friends who supported him along the way. Enjoy the show!



NEVAEH DANIEL

(Chorus) would like to welcome and thank you for attending what will be her last UTK performance as an enrolled student. She is so excited to showcase the years of hard work she has put

in, that has awarded her this opportunity. You might recognize Nevaeh from her work with Tennessee Stage Company in *Much Ado About Nothing* as Hero or *A Midsummer Night's Dream* as Hermia; or maybe you caught her as Opal in the River and Rail theatre's production of the Pulitzer award winning play *Fat Ham*. No matter where, or if, you have seen her, she hopes you enjoy her performance nonetheless and perhaps even continue to follow her journey.



MIA ELLER

(Nelly Fail) is a sophomore History and Theatre major at the University of Tennessee. She is beyond grateful to be returning to the Lab stage after appearing in *The Moors* (u/s

Marjory). In the past few years, she has also appeared in shows such as *Play On!*, *Radium Girls*, and *Mamma Mia!*. She would like to extend her sincerest gratitude to Casey Sams, her friends, and her family for constantly supporting her.



J.D. JOINER

(John N. Fail) is extremely grateful and proud to be a part of his first Lab Theatre production, but also his last show as an undergraduate student at UT! He will be graduating with a

major in Theatre and a minor in History. He would like to thank the director for giving him this opportunity and his parents for their support.

THE ACTORS



MCKENZIE JORDAN

(Gertrude Fail/Gerty) is a third-year BA student studying Theatre and Political Science at the University of Tennessee. Previous

credits include *Anon(ymous)* and *The Moors* at the Clarence Brown Theatre. She would like to thank her family and friends for their endless support and Casey Sams for trusting her to help tell this beautiful story.



JULIANA "JULIE" MAESTRI

(Jenny June Fail) is so excited to be a part of CBT's family here in Knoxville! Dancing since the age of 5, Juliana has found a second home

on the stage. Her past credits include: Mrs. Dodds/Camper in *Percy Jackson: The Lightning Thief Musical* (2021), along with various dance productions with Vols en Pointe, KPDA, and TAME Dance Academy. In addition, Juliana has experience with crew and makeup backstage in previous productions. As she studies Elementary Education with a Theatre Minor here at UT, she's excited for her future as she works towards becoming a performing arts teacher!



SAMUEL R. MCRARY

(Mortimer Mortimer) is very excited to be working with the Clarence Brown Theatre on the production of *Failure: A Love*

Story. He has gained his Associates in Theatre Performance at Pellissippi. He is currently in his second-year studying Theatre Technology at the University of Tennessee. He has worked on many productions with other companies in Knoxville including: *Godspell*, *Guys and Dolls*, *The Musical Comedy Murders of 1940*, *The Moors*, and *Anon(ymous)*. This experience is a huge step in helping him pursue a career in theatre. He is very appreciative of everyone who's supported him, and is very thankful for all he's learned through this production of *Failure: A Love Story*.



HOGAN WAYLAND

(Chorus) is excited to be part of this production! This is his sixth and final show at the Clarence Brown as an undergraduate student. He's

previously been seen in *HAIR* (Woof) and *A Christmas Carol* 2023 & 2024 (Scadger) and more. He is grateful for his director Casey Sams, and for his wonderful family and friends for always supporting him!



Penny4Arts gives every child in Knox and surrounding counties an opportunity to attend arts and culture events/activities at the maximum cost of ONE PENNY (or FREE) when accompanied by a paying adult.

865-523-7543
PENNY4ARTS.COM



AVAILABLE NOW AT YOUR COUNTY CLERK'S OFFICE

\$35

BACK THE ARTS WITH THE NEW ARTS PLATE

SUPPORT ARTS IN YOUR SCHOOLS AND COMMUNITY



No need to wait until your tags expire, you can change your license plate anytime. Fees will be prorated. For more information about specialty license plates, visit tn.gov/revenue/vehicle.



TENNESSEE ARTS COMMISSION
tn.gov/arts



arts
TENNESSEE
CREATING THE FUTURE
tn4arts.org

20 Years of Live Music

WDVX
89.9 fm

BLUE PLATE SPECIAL

IN DOWNTOWN KNOXVILLE

A Free Live Radio Show!




12 Noon Mon-Sat



KNOXVILLE  Senior Financial Group  **BARLEY'S**


Available to Stream on
etpbs Passport Nov. 18 2024

INSIDE THE MIND OF A GENIUS



LEONARDO
"DA VINCI"

A FILM BY KEN BURNS,
SARAH BURNS AND DAVID McMAHON

east tennessee  **PBS.**

Become a member today.
www.EastTennesseePBS.org


UT Federal Credit Union



For *All* Who Love Tennessee

 **B97.5**

Commercial FREE HOURS



THE ARTISTS



CASEY SAMS

(Director) is Associate Department Head and Professor of Theatre, teaching Movement, Acting, Musical Theatre, and Dance to

both undergraduate and graduate students. She earned her BA in Theatre and English Literature and her MS in Motor Learning and Control from Penn State. She is also a Certified Movement Analyst (CMA) in Laban Movement Analysis (LMA) from the Laban/Bartenieff Institute for Movement Studies. She has served on the faculty at Penn State, Interlochen Arts Camp, The Contemporary Art Center of Virginia, and The Governor's School for the Arts in Virginia. Prior to joining the faculty at UT, Casey served as the Education Director for Virginia Stage Company, where she created programming for students from pre-k to post-graduate. She has worked as a Director, Choreographer, Intimacy Choreographer, and Movement Coach at theatres across the country including The Clarence Brown Theatre, The Guthrie Theatre, Cincinnati Playhouse in the Park, St. Louis Repertory Theatre, The Roundhouse Theatre, Utah Shakespeare Festival, North Carolina Stage Company, PlayMakers Repertory, Virginia Stage Company, Pennsylvania Musical Theatre, The Knoxville Opera Company, and Vermont Stage Company. She is also a meditation teacher with the American Meditation Society and Koru Mindfulness.

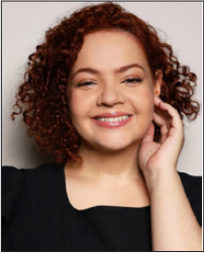


TERRY D. ALFORD

(Musical Director) Terry is a Teaching Professor in Theatre and teaches Musical Theatre Performance and Honors Introduction

to the Theatre and Acting. Prior to joining the UT faculty, Mr. Alford held the positions of Director of Musical Theatre at The University of Tulsa, and Director of Musical Theatre at The University of Wisconsin at Stevens Point. He has worked professionally as a performer, director, musical director, and composer at theaters across the country, including the California Theatre Center, Madison Repertory, Omaha Playhouse, Augusta Barn, Fireside Theatre, Light Opera of Oklahoma, and the Clarence Brown Theatre. Terry has directed or musically directed numerous productions and has created the scores for four original musicals and a variety of chamber and vocal music pieces. He is a member of the Clarence Brown Professional Company and regularly directs and musically directs for the Clarence Brown Theatre. Terry is the director of the CBT Summer Acting Workshop and serves as co-facilitator of Outreach and Education hosting Theatre Tours and Talk Backs.

THE ARTISTS



LEILANE BETUNES

(Scenic Designer)
is a designer, actor,
director, playwright,
and first-year
Scenic Designer in
the MFA program
at the University of

Tennessee. Originally from São Paulo, Brazil, she is proud to create her first show at the Clarence Brown Lab Theatre. She holds a certificate in Acting, a bachelor's degree in Digital Design, and a graduate certificate in Acting and Directing. As a theatre artist, Leilane is the founder of "Inquietações Theatre Company" an independent theatre company in Brazil where she creates and performs her own plays like *Sereníssima?*, alongside her company. Some of her previous theatre credits involve collaboration with Dan Rosseto, a Brazilian playwright and director, in plays and musicals such as *Tribute to the Scoundrel*, *Chronicle of a Suburban Love*, *Rent*, *Rocky Horror Show*, and many others. As a visual artist, Leilane has had her watercolors exhibited in São Paulo, Rio de Janeiro, and at the International Salon of Contemporary Art at the Carrousel du Louvre in Paris.



MATTHEW CARL

(Costume Designer)
is a first-year
Costume Design
graduate student at
the University. He is
thrilled to be designing
his first show in the
Lab. Past design

credits include *Luchadora!*, *Dragons Love Tacos* (Orlando Family Stage); *La Cage Aux Folles*, *The 25th Annual Putnam County Spelling Bee* (Significant Productions). Associate and Assistant credits include

Beautiful the Carole King Musical, *Beauty and the Beast* (Paramount Theater); *Cinderella* (Drury Lane Oakbrook). Matthew has also served as a shopper for Parsons Mears Ltd, and Pinter Costumes shopping for multiple Broadway productions.



MIGUEL SANTIAGO

(Lighting Designer)
has worked in all
aspects of theatre
from performing to
involvement on the
technical side. He
specializes in lighting

design and has worked as a designer on numerous shows, some of which include *Newsies*, *Sweeney Todd*, *Antigone*, *School of Rock*, *9 to 5*, *Tuck Everlasting* and *Bandstand*. He is a 3-time nominee for Best Lighting Design of a Musical by Broadway World. Miguel is a first-year graduate student at the University of Tennessee pursuing an MFA in Lighting Design. You can view more of his work at migueljsantiago.com



CHANCE BECK

(Sound Designer) is
a first-year Sound
& Media Design
graduate student
at UT. *Failure: A
Love Story* is their
debut show here at
the Clarence Brown

Theatre. Chance has previously worked with the local Tennessee theatre company River & Rail on *It's A Wonderful Life*. They come from The University of Southern Mississippi where they achieved their BFA in Theatre Design & Technology. Chance is beyond excited to bring this beautiful show to life and have greatly enjoyed the collaborative process with the other incredible artists on this production.

THE ARTISTS



MICHAELA LOCHEN

(Puppet Design and Construction) is a third-year Scenic Design MFA candidate at the University of Tennessee, Knoxville. She is originally from

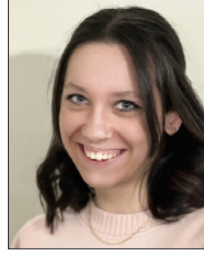
St. Paul, Minnesota, and received a BFA in Scenic Design and a BA in Anthropology from the University of Minnesota Duluth in 2020. Recent credits include scenic designs for *Inherit the Wind* and *The Giver* at the Clarence Brown Theatre; *Newsies* at Artistry Theater and Visual Arts in Bloomington, MN; *It's a Wonderful Life: A Live Radio Play* at River & Rail in Knoxville, TN; *The Servant of Two Masters* at Lyric Arts in Anoka, MN; and *Million Dollar Quartet* at Peninsula Players Theatre in Fish Creek, WI. More of her work can be found at michaelalochen.com.



CAROL MAYO JENKINS

(Voice and Text Director) is recently retired from the Theatre Department, but she is delighted to be back working

with the students on this beautiful play. The ability to bring stories, images and passion to life through the spoken word is the actor's craft, and working on that skill is a gift to any teacher. We have all grown from our experience with Philip Dawkins' rich and imaginative language. Enjoy!



BELLE HOLMES

(Stage Manager) is a senior in the Theatre program here at UTK. She has previously assistant stage managed shows with the Clarence

Brown Theatre and the LAB including *Knoxville*, *Kinky Boots*, *The Giver*, *The Moors*, and *Hair*. This one is bittersweet as it's her last one before graduation. She would like to thank all of her mentors and professors that made sure she is well-prepared for the world. This show is for Granny; she can finally watch all the shows.



KENNETH MARTIN

(Department Head, Artistic Director) is a proud member of United Scenic Artists and his scenic design work has been seen

at theatres such as the Kansas City Rep, Florida Rep, The New Theatre, Kansas City Actor's Theatre, Cleveland Ensemble, Ocean State Theatre and many others. His work in higher education spans four universities over 29 years.

THE ARTISTS



TOM CERVONE

(Managing Director)
Tom is grateful and honored to serve the Clarence Brown Theatre as Managing Director. Cervone has also served as executive director

for both Dogwood Arts and the Historic Tennessee Theatre Foundation, but the CBT/UTK Theatre Department is Tom's administrative and artistic home. Cervone arrived in Knoxville in 1989 as an MFA candidate in acting and was hired in May of 1993 as the company manager, then promoted to managing director in 1995. And for his brief foray downtown, Tom has been in this chair, blissfully, ever since. Tom is and has been very active within the UTK community, having served as Exempt Staff Council chair for many years, co-chair of the LGBT Commission, a member of the Diversity Council and many other UTK organizations. Cervone is a long-time board member of the WordPlayers and continues to evangelize on behalf of the art and culture community locally and nationally. Tom received the Chancellor's Citation for Outstanding Service to the University in 2010. Cervone holds his undergraduate degree in Speech and English Education with an emphasis in Theatre from West Liberty University in West Virginia and a Master of Fine Arts and an MBA from UT. He is a graduate of and was selected as the Class Representative of the Leadership Knoxville class of 2011, the best class ever. Cervone was inducted into his undergraduate alma mater's class of 2015 Wall of Honor and was appointed by the Governor of WV in 2021 to serve as a member of the Board of Trustees of WLU.



SUSAN L. MCMILLAN

(Production Manager)
Susan is in her eleventh year as Production Manager at the CBT and UT Department of Theatre. In addition,

she teaches Stage Management. Prior, Susan was the Production Manager and Stage Management Instructor at the University of California, Santa Barbara, for 6 years. Susan is a member of Actors' Equity Association, and was a Stage Manager at the Oregon Shakespeare Festival for 18 years. Additionally, she has stage managed at the Guthrie Theatre, Shakespeare Theatre Company, Portland Center Stage, PCPA, Rogue Valley Opera, Portland Civic Theatre, and has toured to the Kennedy Center. Through science (B.S. degrees in Biochemistry and Biology from Oregon State University) and music (cellist), Susan found her way into theatre (Minor in Theatre from OSU). She is incredibly grateful for all the opportunities and adventures along the way, inspirational mentors, artistic and talented colleagues, amazing students, and the love and support of her family and friends. And very grateful for Molly – woof! This season is fully dedicated to her beloved, beautiful, and deeply missed mother, Grace – a shining light forever.

FROM
CHOPIN
TO
COLTRANE
TO
CITY HALL

WUOT brings you the best of classical, jazz, and local news along with your favorite NPR programs. Tune in today at 91.9 FM, stream online at WUOT.org, or download the WUOT mobile app.

WUOT 91.9
fm
wuot.org  [@wuotfm](https://twitter.com/wuotfm)

npr



ROTARY INSPIRING THE WORLD

Come and visit a Rotary Club of Knoxville meeting. We meet every Tuesday at noon at the Crowne Plaza Hotel, where we hear great speakers and enjoy social networking and camaraderie. Founded in 1915, we are Knoxville's oldest and largest service club, with around 150 members and always looking for more. The club is apolitical and secular, welcoming members from all communities. Each year our club:

- Awards \$20,000 college scholarships
- Recognizes two Knox County teachers with \$500 awards and \$250 gift certificates
- Supports End Polio Now, Rotary International's signature project
- Sustains clean water projects in 115 villages in Thailand

Learn more at www.knoxvillerotary.org

CONCESSIONS

COOKIES



Chocolate Chip Cookies **\$5**
classic recipe! — pack of 2

Lemon Thumbprint Cookies **\$5**
shortbread cookies with
lemon icing – pack of 3

POPCORN



Movie Theatre **\$4**
Extra buttery and deliciously
salty popcorn

Cheddar **\$4**
Rich and delicious cheddar cheese

SNACKS

Chips **\$2**

Candy **\$2**

MERCHANDISE

Tumbler **\$5**
cold beverages only

Travel Mug **\$7**
cold and hot beverages

DRINKS



Soft Drinks **\$2**

Bottled Water **\$2**

Coffee regular | decaf **\$2**

*Only beverages with lids
are permitted inside the auditorium.*

**CLARENCE
BROWN
THEATRE**
AT THE UNIVERSITY OF TENNESSEE

*We are proud to support Knoxville's
small businesses.*

PRODUCTION CREW

MANAGEMENT

Directing Assistant

Abbigail Corwin

Assistant Stage Manager

Erica Zacharias

COSTUMES

Wardrobe Supervisor

Amber Williams

Assistant Wardrobe Supervisor

Catherine York

Wardrobe

James Burnett

SCENERY

Deck Crew

Kelsey Cain

Jesse Winningham

LIGHTING

Assistant Lighting Designer

Kayla Moore

Light Board Operator/

Production Electrician

Ali La Rosa

SOUND

Sound Board Operator

Gwynevere Chaffin

CREW SWING

Assistant Stage Manager/Crew Swing

Hudson Sheer



The Lab Theatre provides an intimate theatre experience, located in the center of the University of Tennessee's Knoxville campus. Built in 1970 as part of the larger Clarence Brown Theatre building, The Lab Theatre is a 125-seat black box venue located in the heart of campus. Designed both as a theatre and to function as a classroom space for the department's acting classes, The Lab Theatre is home to our undergraduate and MFA students, and serves as an integral space for a variety of their projects and productions.

Drive smarter local marketing
with insights and solutions from the
USA TODAY NETWORK.

**The power
of knowing
you are doing
things right.**

LOCALiQ
PART OF THE USA TODAY NETWORK

localiq.com

CBT PRODUCTION STAFF

ADMINISTRATION

Artistic Director/Department Head -

Kenneth Martin

Managing Director - **Tom Cervone**

Associate Artistic Director - **Katie Lupica**

Marketing & Communications Director -

Mindy Cooper

Business Manager - **Tara Halstead**

Accounting Specialist - **Le Anna Jacobson**

Administrative Specialist - **Emily Pope**

General Manager - **Vickie Carter**

IT Specialist - **Mark Spurlock**

Graphic Designer - **Julie Anna Summers**

PATRON SERVICES

Manager of Ticketing and Sales -

Sarah Burton

Box Office Manager - **Brittany Spencer**

House Manager / Assistant Box Office

Manager - **Savannah Smith**

Audience Experience Manager -

David Ratliff

Patron Service Associates -

**George Bull, Desirea Burke, Payden Daniels,
Tyler Duncan, Monica Gardiner, Max Jacob,
Kevine Mahoro, Faith McManus, Breyana Meyer,
Joseph Molitor, Shelby Perdue, Justin Spinella,
Jalen Smith, Lillian Snead, Camden Tripp,
Sarah Wahrmund, Madison Wall,
Sierra Woodard, and Jamison Yeager**

ENGAGEMENT/DEVELOPMENT

External Relations Manager

Shelly Payne

Grants, Education, and

Outreach Manager

Hana Sherman

Tours, Workshops

David Brian Alley

Summer Acting Workshops, Talk Backs

Terry D. Alford

PRODUCTION

Production Manager - **Susan L. McMillan**

Rental Coordinator/Assistant Production

Manager - **Phyllis Belanger**

Production Stage Manager - **Patrick Lanczki**

COSTUMES

Costume Shop Manager - **Melissa Caldwell-Weddig**

Cutter/Draper - **Kyle Andrew Schellinger**

Costumers - **Amber Williams, Elizabeth Aaron,
Ellen Bebb, and Laura Clift**

Costume Assistants - **Alex Heder, Kaelyn Marie,
Matthew Carl, and Tori Niemiec**

Wigs - **Siobian Jones of The Mighty Wig**

Wig Assistants - **Laura Asmussen and Riya Golden**

ELECTRICS

Electrics Shop Manager - **Travis Gaboda**

Lead Electrician - **Jon Mohrman**

Lighting Assistants - **Miguel Santiago, Dylan Tillery,
Amelia Payne, Bailee Boisclair, Joseph Coram,
Kayla Moore, and Josh Rodriguez**

SCENERY

Technical Director - **Jason Fogarty**

Assistant Technical Director - **George Hairston**

Lead Carpenter - **Jerry D. Winkle**

Senior Carpenter - **Kyle L. Hooks**

Scene Shop Assistants - **Jeremiah Buckley,
Olivia Layman, Ava Longworth-Orr,
Justice Morris, Ellie Roberts-Wolford,
and Baylee Seymore**

Scenic Charge Artist - **Isabel Isaac**

Scenic Artist - **Sophie Smrcka and Alondra Barbosa**

PROPERTIES

Props Supervisor/Props Designer - **Christy Fogarty**

Lead Properties Artisan - **Sarah Gaboda**

Properties Carpenter - **Becca Stockhaus**

Properties Assistants - **Kylie Cherry,
Caroline Elliot, Benjamin Miller, Baylee Seymore
and Quinn Tomlinson**

SOUND

Sound and Video Manager - **Chris Walters**

Sound Assistants - **Chance Beck, Allison Bucher,
Elisabeth Dupuy and Amoirie Perteet**

ABOUT CLARENCE BROWN THEATRE



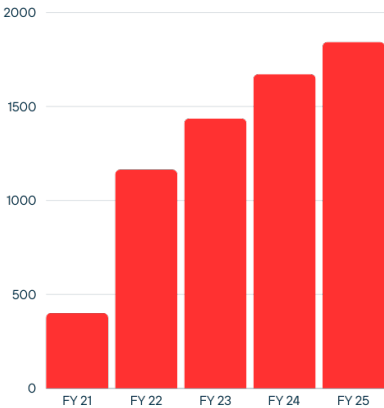
Celebrating more than 50 years of professional theatre!

DID YOU KNOW?

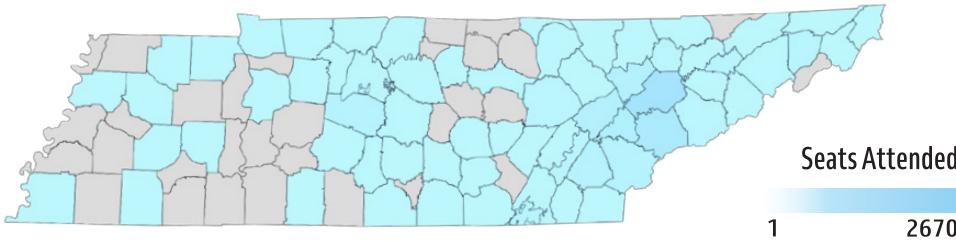
3	Venues - CBT Mainstage, Lab Theatre * Jenny Boyd Carousel Theatre - Fall 2025
7	Productions/200+ Performance Aug- May
16	Faculty
22	Graduate Students
35	Staff
100	Undergraduate Students
125	Seats in the Lab Theatre
225+	Artists Each Season
500+	Individual, Corporation, & Foundation Support
550	Seats in the Clarence Brown Theatre

PATRONS / YEAR (2023 - 2024)

35,000+	Patrons Attending
6,000+	Students from 50+ schools
2,700	Season Subscribers
75%	Live in Knoxville



2023/2024 CBT Attendees by County



Photos top L to R: Aleah Vassell in HAIR; Jacob Leon, Jasmine R. Handy, Rachel Darden, Allison Bunch and Drew Drake in THE GIVER; Chris Verrier in ADAPTIVE RADIATION; Cecilia Iole and James Onstad in CANDIDE; Omari Collins in KINKY BOOTS; By Brynn Yeager and Ella Marston

CLARENCE BROWN THEATRE SOCIETY

Members of the CBT Society provide vital investments for the Clarence Brown Theatre's programs and activities year after year, all while receiving VIP treatment in return. Become a member today and make a difference in the next generation of theatre artists! For corrections to your acknowledgement name, please contact Shelly Payne at shellypayne@utk.edu

ARTISTS CIRCLE

Pamela and James Given
Townes Lavidge Osborn
and Robert S. Marquis
Hei Park
Linda and Terry Tyler

PRODUCERS CIRCLE

Dr. John M. and
Connie L. Begovich
Carol Beilharz
and Myrwood Besozzi
Larry and Jeanie Brakebill
Peter and Sandra Campbell
Bonnie Carroll
Elizabeth Carroll
Jimmy and Ileen Cheek
Elizabeth Craig
Nancy Duckles and
Cameron Sears
Jeffrey Eberting
Vickie Ellis
Susan Farris
Howard Filston
Drs. Joseph C.
and Jayne C. De Fiore
Stanton and Alison Garner
Margie Nichols Gill
and John Gill
Rosemary Gilliam
Amy Morris Hess
John and Susan Hoffman

Julie Howard and
Ted Flickinger
Susan and Jerry Kornegay
Drs. Theresa Lee Love
and Jacob F. Love
Erica Lyon and Dylan Jones
Robert Madigan
Maureen Dunn McBride
and Neil G. McBride
Martha McCampbell
Arthur and Marsha Mitchell
Linda Norris
Dr. Lee Riedinger
and Mary Zuhr
Patricia Roux-Sharp
Susan Sgarlat
Sandra Stoutt
Lynn Venafro
Capt. Kenneth Stark
and Nancy Voith
Donna Wertz
Wendy Wortham

DIRECTORS CIRCLE

Sara Phillips
Donna Riggs
Jeffrey Smith

RIISING STAR

Misty Anderson
Julia Bentley

John Bushore
John Butler
Leann Dickson
Steve Drevik
Lauren and
Christopher Herbstritt
Jeffrey Kovac
Samantha Murphy
Alexander Waters

LEADING PLAYER

Jay and Sandra Aldrich
Andrea Anderson
Lauren Chiles
Brooks and Karen Clark
Joan Clevenger
Michael Combs
Danielle Ely
Moira Ely
Tim Ezzell
Tara Halstead
Dennis Hayward
Julie Lohnes
Cal and Rebecca MacLean
William Morrow
John North
Bonnie Ownley
Linda Phillips
Dave Snider
Robert Trigiano
Jessica Tucker
Georgiana Vines

CLARENCE BROWN THEATRE

AT THE UNIVERSITY OF TENNESSEE

CBT ADVISORY BOARD 2024/2025 OFFICERS AND MEMBERS

Alexander Waters - *Chair*

Julie Howard - *Immediate Past Chair*

Margie Nichols - *At-Large*

Will Brewer - *At-Large*

Jennifer Banner

Larry Brakebill

Will Brewer

Amy Caponetti

Lisa Carroll

Jeff Cheek

Brooks Clark

Katharine Pearson Criss

Leann Dickson

LeAnne Dougherty

Danielle Ely

Pamela Given

Amy Morris Hess

Michael Higdon

Julie Howard

Delphia Howze

Erica Lyon

Maureen Dunn McBride

Margie Nichols

Linda Norris

John North

Sara Phillips

Vladimir Protopopescu

Lee Riedinger

Tomi Robb

CortneyJo Sandidge

Susan Sgarlat

John Sorey

Pedro Tomás

Alice Torbett

Robin Turner

Terry Tyler

Georgiana Vines

Alexander Waters

Donna Wertz

Melanie Wood

Wendy Wortham

EMERITUS MEMBERS:

Joe De Fiore

Susan Farris

Sheena McCall

Townes Lavidge Osborn

EX-OFFICIO MEMBERS:

Kenneth Martin

Tom Cervone

Jessi Arnidis

Jan Simek

Stephanie Wall

Fueling the Arts and the Audience



Pilot Company is proud to support the Clarence Brown Theatre's mission to enrich local culture and guide the next generation of artists.

pilot
COMPANY®

10 WEATHER IMPACT ALERT

TRACK THE **IMPACT**. BE **PREPARED**. STAY **SAFE**.

STEP 1

DOWNLOAD THE
10NEWS APP

STEP 2

ASSEMBLE A
WEATHER IMPACT KIT

STEP 3

HAVE AN
EMERGENCY PLAN

DOWNLOAD THE
10NEWS APP NOW



GET **WEATHER IMPACT DAY**
ALERTS, FORECASTS, AND UPDATES.

Stream newscasts on +app on **Roku**  **Watch on**  **Apple TV**

CBT THANK YOU

Every gift, big or small, makes an impact on our students, our faculty and staff, the Clarence Brown Theatre, and the arts in this community. No matter the fund, we wanted to say thank you to our supporters. Contributions listed below are through December 2024. For corrections to your acknowledgement name, please contact Shelly Payne at shellypayne@utk.edu

Jay and Sandra Aldrich
Ronald Alexander
David Alley
Robert Alley
Virginia St. Ana
Andrea Anderson
Misty Anderson
Barbara and Steve Apking
Anne Armstrong
Lucia and Doug Ashworth
Jamie Ayres
Callie Bacon
Leslie Badaines
Jennifer Banner
Anne Becker
Dr. John M. and
Connie L. Begovich
Carol Beilharz and
Myrwood Besozzi
Phyllis Belanger
E. Bell and Rose Bell
Ivan Beltz and Donna Davis
Shawn Benson
Julia Bentley
Scott Bishop
Larry Bounds
Randy and Jenny Boyd
Charles Brakebill
Christopher Brakebill
Larry and Jeanie Brakebill
David Brandes
William Brewer II
Jill Brock
Kathleen Buckley
John Bushore and
Elizabeth Haughton
John and Sandra Butler
Kieran Byrd

Peter and Sandra Campbell
Amy Caponetti
Kimberly and David Cardwell
Cynthia Moxley and
Alan Carmichael
Fay Carr
Fany Carrera
Bonnie Carroll
Bonnie Carroll and Roy Cooper
Elizabeth Carroll
Thomas Cervone and
Susan Creswell
Jeffrey Cheek
Jimmy and Ileen Cheek
Weiwei Chen
Lauren Chiles
Brooks and Karen Clark
Joan Clevenger
Michael Combs
Robin Conklin
Marcia Cook
James and Sheila Cooper
Elizabeth Craig
Betsey Creekmore
Katharine Pearson Criss
Janice Crockett
Reid and Olga Crumpton
Drs. Joseph C. and
Jayne C. De Fiore
Chris Deatherage
Nancy DeCosta
Gina Di Salvo and Jeffrey Tinley
Diana Dickey
Leann Dickson
Camelia Dougherty
Steve Drevik
Nancy Duckles and
Cameron Sears

Jan Duncan
Donald Dunning Jr.
Jeffrey and Virginia Eberting
Vickie Ellis
Danielle Ely
Moira Ely
Tim Ezzell
Susan Farris
Norman Featherston
Joseph Ferguson
Howard Filston and
Sandra Stoutt
Craig Fitzhugh
Christy and Jason Fogarty
William and Dianne France
Debra Freeberg
Kevin Galbreath
Brian and Heidi Gard
Stanton and Alison Garner
Mark and Nan Gaylord
Margie Nichols Gill and John Gill
Rosemary Gilliam
Pamela and James Given
Chad Goldman
Tara and Scott Halstead
Katie Harrill
Haslam Family Foundation Inc.
Dennis Hayward
Charlotte Headrick
Joan and Merrit Heminway
Lauren and
Christopner Herbstritt
William Herriage
Amy Morris Hess
John and Susan Hoffman
John Hoffman
Charlotte Holland
Mary Hollenbeck

CBT THANK YOU

Thomas Hollenbeck
Marilyn and Lyn Hollis
Sandra Holub
Lila Honaker
Julie Howard and
Ted Flickinger
Richard Christensen and
Beth Howe-Christensen
Leigh Hruby
Lori Ingle
Lyle Irish
Elisabeth Jackson
Larsen Jay
Carol Mayo Jenkins
Gretchen Burleigh-Johnson
Arthur Jones
Debbie Jones
Lucy Keh
Presley Keith
Philip King III
Andrea Kline
Mary and James Kois
Susan and Jerry Kornegay
Jeffrey and Susan Kovac
Robert Lederer
Drs. Theresa Lee Love
and Jacob F. Love
Michael and Nancy Lofaro
Julie Lohnes
Mary Long
Laura Lucas
Erica Lyon and Dylan Jones
Beauvais Lyons and Diane Fox
Cal and Rebecca MacLean
Brenda and Robert Madigan
Charles and Nancy Maland
Stephen Mangum
Francine Marasco
Townes Lavidge Osborn
and Robert Marquis
Julia and Ken Martin
Stephen Martin

Maureen Dunn McBride
and Neil G. McBride
Rose Mary McCall
Martha McCampbell
Peter Mckee
Susan McMillan
Peg and Tom Mercier
Amanda Middleton
Gary Miller
Arthur and Marsha Mitchell
Mark Mitchum
Carl Moore Jr.
Jane Moore
William Morrow
Robert Moss
Samantha Murphy
Mildred Myers
James Newburn
Margie Nichols Gill and
John Gill
Linda Norris
Margaret Norris
Carman North and
Christopher Lowe
John North
Michael Nunley and
Terry Alford
Estate of Jean C. Ogle
Terry Olberding
Townes Lavidge Osborn
and Robert S. Marquis
Bonnie Ownley
Hei and Stanley Park
Kendall Parrott
Joseph and Shelly Payne
Meredith Peccolo and
James Vaughan
Brian Pendleton
G. Phillips
Linda Phillips
Pamela and G. Michael Phillips
Sara Phillips

Christopher Pickart
David Pollard Jr.
Arnold Pomerance
Amy Pope
Vladimir Protopopescu
Sharon Pryse
Betsy Quinn
David Ratliff
Charles Reiss
Dr. Lee Riedinger and
Mary Zuhr
Donna Riggs
Mary and Rob Ritchie
Lauren Roark and
Spencer Christensen
Deborah Rodday
Patricia Roux-Sharp
Philip Royer
David and Nancy Rutherford
Cortney Jo Sandidge
Eric Schmidt
Gerhardt Schneider
Bryan and Brandi Self
Susan Sgarlat and Charles Fels
Patricia Roux-Sharp
Andrew Sheehy
Hana and Steven Sherman
Keith Shope Sr.
Shubert Foundation, Inc.
Jan Simek
Melinda and James Simmons
John Sipes
Kerstin Kilgo Sisco
Stephanie Slater
Shane Sloan
Jeffrey Smith
Dave Snider
John and Delores Sorey
Julie and Jerry Sosebee
Mark Spurlock
Morgan Stanley
Bob and Marcia Stewart

CBT THANK YOU

Nancy Stewart
Robert Stocks
Dr. Howard C. Filston
and Sandra K. Stoutt
Elizabeth and Wes Stowers
Harry Stowers
Stowers Machinery
Foundation, Inc.
Julie Anna Summers
Brooke Swart
Tyler Tallent
Lisa Thomas
Devon Thompson
Sam Tipton Jr.
Pedro Tomás-Mitchell
and Roger Roark
Alice Torbett
Robert Trigiano
Jessica Tucker
Robin Turner
Linda and Terry Tyler
Karen Valero
Lynn and Anthony Venafro
Janna de Vente
Georgiana Vines
Capt. Kenneth Stark
and Nancy Voith
Stephanie Wall
Christopher Wallace
William and Sara Walter
Sharon Ward
Alexander Waters
Brent Waugh
Donna Wertz
Donald White
Amber Williams
Tammie Williams
Timothy Williams
Rhonda and Douglas Wilson
Travis Wilson
Melanie Wood

Dr. Dale C. and
Wendy Wortham
Kenton Yeager and Casey Sams
Cheryl Zamora

MARIAN BROWN'S CIRCLE

Pandy Anderson
David Andrews
Jeannette Brown
Amber Bilderback
Dennis Bussell
Christopher Clark
Greg Congleton
Mitzi Congleton
Steve Drevik
Vickie Ellis
Deborah Emery
Mardel Fehrenbach
Jim Given
Pamela Given
Gretchen Hartmann
John Hoffman
Julie Howard
Virginia Kerwin
Jerry Kornegay
Susan Kornegay
Sharon Kreis
Steve Krempasky
Robert Lacy
Stephen LaVie
Erica Lyon
Francine Marasco
Elizabeth Matlock
Vanessa McAfee
Maureen McBride
Sheena McCall
Martha McCampbell
Margie Nichols

Linda Norris
Hei Park
Sara Phillips
Elizabeth Pollock
Donna Riggs
Carol Shaffer
Helen Sirett
Helen Tews
Nadine Trainer
Jessica Tucker
Linda Tyler
Terry Tyler
Georgiana Vines
Nancy Voith
Donna Wertz

CORPORATE, FOUNDATION AND GRANT SUPPORT

Arts & Cultural Alliance
City of Knoxville
The Department of
the Treasury
Mildred Haines and
William Elijah Morris
Lecture Endowment Fund
Knox County
Knox County Tourism
Consortium
Merchant & Gould
Pilot Company
Rotary Club of Knoxville
Tennessee Arts Commission
The Roy Cockrum Foundation
The Shubert Foundation, Inc.
UT Federal Credit Union
UT Institute of American Civics

2024/2025

FOUNDATION & GRANT PROFILES



jackpot, the Foundation's mission is to award grants to support world-class performing arts projects in not-for-profit professional theatres throughout America. Since 2014, 39 flagship American theaters and performing arts organizations have received major grants from the Foundation.

Founded in 2014 by Roy Cockrum and Benita Hofstetter Koman with winnings from Mr. Cockrum's Powerball lottery



and J.J. Shubert, in memory of their brother Sam and is dedicated to sustaining and advancing the live performing arts in the United States, with a particular emphasis on theatre and a secondary focus on dance. They are the nation's largest funder dedicated to unrestricted funding of not-for-profit theatres, dance companies, professional theatre training programs and related service agencies. The Shubert Foundation is especially interested in providing support to professional resident theatre and dance companies that develop and produce new American work.

The Shubert Foundation, Inc., was established in 1945 by Lee



Knox County Tourism Consortium

with 24 arts and culture organizations who deliver more than 4,000 tourism geared events and activities. The visitors the consortium attracts to Knox County bring millions of dollars into the county as they patronize local restaurants, shops, vendors, and hotels. Pre-pandemic, the consortium attracted visitors from all fifty states and international visitors from more

The Clarence Brown Theatre is a proud member of the **Arts & Culture Alliance's Knox County Tourism Consortium**, joining



than 80 countries to Knox County, bringing nearly \$18 million into the county with them. Visitors from surrounding East Tennessee counties have added more than \$16 million. The consortium supports \$12 million in jobs and pays \$18 million more to local vendors.

Knox County is a county in the U.S. state of Tennessee. As of the 2010 census, the population is 432,226. Its county seat and largest city is Knoxville. The county is at the geographical center of the Great Valley of East Tennessee. Near the heart of the county is the origin of the Tennessee River at the union of the Holston and French Broad Rivers. Knox County was created on June 11, 1792 by Governor William Blount from parts of Greene and Hawkins counties, and has the distinction of being one of only eight counties created during territorial administration. It is one of nine United States counties named for American Revolutionary War general and first United States Secretary of War Henry Knox. Parts of Knox County later became Blount (1795), Anderson (1801), Roane (1801), and Union (1850) counties.



The Department of the Treasury is the executive agency responsible for promoting economic prosperity and ensuring the financial

security of the United States. The Department is responsible for a wide range of activities such as advising the President on economic and financial issues, encouraging sustainable economic growth, and fostering improved governance in financial institutions. The Department of the Treasury operates and maintains systems that are critical to the nation's financial infrastructure, such as the production of coin and currency, the disbursement of payments to the American public, revenue collection, and the borrowing of funds necessary to run the federal government. The Department works with other federal agencies, foreign governments, and international financial institutions to encourage global economic growth, raise standards of living, and to the extent possible, predict and prevent

economic and financial crises. The Treasury Department also performs a critical and far-reaching role in enhancing national security by implementing economic sanctions against foreign threats to the U.S., identifying and targeting the financial support networks of national security threats, and improving the safeguards of our financial systems.



Pilot Company's mission is to make life better for America's drivers. With more

than 650 locations nationwide, Pilot Company is the largest retail operator of travel centers in North America. At Pilot Company we believe it is essential to give back to the community. Our founder, Mr. James A. Haslam II, established our philanthropic spirit when he started the company in 1958. Our employees all take part in giving their time, talents and efforts to various organizations throughout the year. Together we work to make our communities better places to work, play and live. Visit www.pilotflyingj.com for more information.



City of Knoxville - Knoxville's roots run deep and strong. The city has served as the hub of the region since its founding in 1791. The

best of its Appalachian heritage remains today — a strong work ethic, a family-centered community, and an intense respect for the natural beauty that envelopes the region. The metropolitan Knoxville area was ranked the "best place to live in the United States and Canada" among cities with a population of fewer than 1 million. The ranking came from the Millennium edition of Places Rated Almanac. The results confirmed what most in this area have known for a long time - Knoxville is one of the best cities in the country!



The **Tennessee Arts Commission**, was created in 1967 by the Tennessee General Assembly

with the special mandate to stimulate and encourage the presentation of the visual, literary, music and performing arts and to encourage public interest in the cultural heritage of Tennessee. TN Arts

Commission Governing Policies can be found here. The mission of the Tennessee Arts Commission is to cultivate the arts for the benefit of all Tennesseans and their communities. Our vision is a Tennessee where the arts inspire, connect and enhance everyday lives. The Commission is supported by in part by the National Endowment for the Arts.

The Mildred Haines and William Elijah Morris Lecture Endowment supports campus visits of lecturers and scholars in all disciplines in the College of Arts and Sciences. The dean of the college solicits proposals from departments and academic programs for the use of the funds, appoints an advisory committee to review and make recommendations regarding the proposals, and makes awards to the successful proposals. The advisory committee has a representative from the humanities, the social sciences, the natural sciences and the arts faculties of the college. The committee selects a chairperson from among its members. Committee members serve two-year terms and may be reappointed at the discretion of the dean.



Institute of American Civics - In a time of proliferating distrust and political polarization, the Institute of American Civics housed in The Baker School of Public Policy and Public

Affairs presents a remarkable opportunity to address these challenges, beginning with undergraduates on the University of Tennessee, Knoxville, campus and then extending more broadly to the entire UT system and to the State of Tennessee as a whole. The institute is committed to improving civic knowledge and civil discourse through courses, student programs, public events, and K-12 outreach. With a strong bipartisan backing, the 112th Tennessee General Assembly created the Institute of American Civics to strengthen civic education and participation while reviving thoughtfulness, civility, and respect for opposing viewpoints in national discourse.

CLARENCE BROWN THEATRE

THE PLAY THAT GOES WRONG^G

By Jonathan Sayer, Henry Shields, and Henry Lewis

APRIL 16 - MAY 4

Welcome to the opening night of 'The Murder at Haversham Manor', where things go from not very good to an utter disaster. 'The Play That Goes Wrong' is an ill-fated play-within-a-play, set on the opening night of the Cornley Drama Society's newest production. The troupe's ambitious whodunit has everything you never want in a show: falling props, collapsing scenery, an unconscious leading lady, a corpse that can't play dead, and actors who trip over everything... including their lines. Come see why this how has been called "the funniest play Broadway has ever seen!" (*Huffington Post*)

BUY TICKETS





THE *Jenny Boyd* CAROUSEL THEATRE

From Award Winning productions to commissioning World Premieres, the Carousel continues to impact our community.

Respecting the past, recognizing the present, and revealing the future. Join the legacy of the Carousel by helping us support the future of the new Jenny Boyd Carousel Theatre today!

LEARN MORE

Rendering by: Sanders Pace Architecture