

The Lab
Theatre

HOW TO DEFEND YOURSELF

By LILIANA PADILLA

OCT 23 - NOV 10



**CLARENCE
BROWN
THEATRE**

AT THE UNIVERSITY OF TENNESSEE



Photo: Abigail McCarter in THE MOORS by Ella Marston

CLARENCE BROWN THEATRE

AT THE UNIVERSITY OF TENNESSEE

Your Theatre. Your Stories.

***Celebrating more than 50-years
of professional theatre!***

For more than 50 years, Clarence Brown Theatre (CBT) has told meaningful stories by providing world-class live theatre to nearly 40,000 patrons who visit us each season. The CBT season runs from September through May and features seven productions ranging from musicals to drama and provides a cultural resource and professional theatre for both the University of Tennessee Knoxville and the larger East Tennessee community.

865-974-5161
clarencbrowntheatre.com



THE UNIVERSITY OF
TENNESSEE
KNOXVILLE

DEPARTMENT OF THEATRE

**MFA IN ACTING
MFA IN DESIGN
BA IN THEATRE**

KENNETH MARTIN

*Artistic Director,
Department Head*

TOM CERVONE

Managing Director

865-974-6011
theatre.utk.edu

CLARENCE BROWN THEATRE

presents

HOW TO DEFEND YOURSELF

By **Liliana Padilla**

Directed by **JAYNE MORGAN**

Fight Director **SAM-CLAIRE BIEBER**

Intimacy Director **CASEY SAMS**

Scenic Designer
ALONDRA CASTRO

Costume Designer
TORI NIEMIEC

Lighting Designer
DYLAN TILLERY

Sound Designer
ELISABETH DUPUY

Stage Manager
ADA HERMOSO

Department Head,
Artistic Director
KENNETH MARTIN

Managing Director
TOM CERVONE

Production Manager
SUSAN L. MCMILLAN

'How To Defend Yourself' had its Off-Broadway Premiere at New York Theatre Workshop
Patricia McGregor, Artistic Director | Jeremy Blocker, Executive Director

'How To Defend Yourself' World Premiere Production at the 2019 Humana Festival of New American Plays at
Actors Theatre of Louisville and at Victory Gardens Theater

Developed by: UC San Diego, Wagner New Play Festival 2018 Production directed by Kim Rubinstein Mentored by Naomi Izuka,
Kim Rubinstein, Deborah Stein, Allan Havis, Dramaturgy: Gabe Greene, Dylan Key; Script Consultants: Ali Viterbi

Victory Gardens Theater, Chicago, Illinois Chay Yew, Artistic Director, Erica Daniels, Managing Director
IGNITION Festival of New Plays 2018 Workshop and productions at Victory Gardens and Actors Theatre directed by Marti Lyons

Developed at the Ojai Playwrights Conference; Robert Egan, Artistic Director/Producer; Workshop directed by Danya Taymor;
Dramaturgy: Sasha Emerson

'How To Defend Yourself' was supported by residencies at the Blue Mountain Center and the Anderson Center at Tower View

THE VIDEOTAPING OR MAKING OF ELECTRONIC OR OTHER AUDIO AND/OR VISUAL RECORDINGS OF THIS PRODUCTION AND DISTRIBUTING RECORDINGS OR STREAMS IN ANY MEDIUM, INCLUDING THE INTERNET, IS STRICTLY PROHIBITED, A VIOLATION OF THE AUTHOR(S)'S RIGHTS AND ACTIONABLE UNDER UNITED STATES COPYRIGHT LAW. FOR MORE INFORMATION, PLEASE VISIT: <https://concordtheatricals.com/resources/protecting-artists>

THE SHUBERT
FOUNDATION INC.

Arts & Culture Alliance

KNOX COUNTY
TOURISM CONSORTIUM

KNOX COUNTY
TENNESSEE

CITY OF KNOXVILLE

Sara Phillips



This project is being supported in whole or in part by federal award number 21.027 awarded to the City of Knoxville by the U.S. Department of the Treasury and the Arts & Culture Alliance.

Cover photo: Molly Brennan by Shawn Poynter

ABOUT THE AUTHOR



LILIANA PADILLA's work explores community, the body, power and healing. *How to Defend Yourself* won the Yale Drama Series Prize, was an international Susan Smith Blackburn Prize Finalist and was featured on The Kilroy's list. Liliana's work has been produced at the Humana Festival, Victory Gardens Theatre and the La Jolla Playhouse, and workshoped at Oregon Shakespeare Festival, Hedgebrook and the Ojai Playwrights Conference. Liliana teaches at Dartmouth College and the Sewanee Writers Conference. MFA Playwriting: UCSD, BFA Theatre: NYU.

COMING SOON

Charles Dickens'

A CHRISTMAS CAROL

Adapted by Edward Morgan
and Joseph Hanreddy

Music by John Tanner

NOV 21 – DEC 21

CLARENCE
BROWN
THEATRE
AT THE UNIVERSITY OF TENNESSEE



Jed Diamond; by Shawn Poynter

FROM THE **ARTISTIC DIRECTOR**

The theatre at the University of Tennessee has always tried to produce shows relevant to our students. In *How to Defend Yourself* we find a fierce and poignant exploration of trauma, self-empowerment, and the ways in which violence impacts our sense of self and the university community. The play challenges us to consider the complexities of power dynamics in intimate relationships, and how our desire for control over our bodies and our safety can become entangled in larger systems of violence and fear. With a blend of humor and vulnerability, the play examines what it means to "defend" oneself—not just from physical harm, but from internalized shame, guilt, and societal expectations.



The play's title, *How to Defend Yourself*, suggests a direct, instructional guide. But as the characters' interactions unfold, it becomes clear that there is no easy guide to navigating the intersections of personal safety, sexual agency, and trauma. The rawness of the characters' experiences and their attempts to reclaim power reflect the complexities we face in contemporary culture, where conversations about consent, gender roles, and identity are more urgent than ever.

At its core, this play offers no simple resolutions. Instead, it invites us into a space of tension, where defense mechanisms—whether physical, emotional, or psychological—are questioned and dismantled. The characters' journey is a reminder that healing is not linear, and the fight for autonomy is deeply personal, yet profoundly collective.

Thank you for joining us in the theatre!

Ken Martin

COMMUNITY PARTNER



Sexual Assault Center
of East Tennessee

The Sexual Assault Center of East Tennessee (SACET) was founded in 1973 as the Knoxville Rape Crisis Center and remains one of two comprehensive, community sexual assault agencies in the state of Tennessee. The mission of SACET is to provide excellent and compassionate services for survivors of sexual assault and to empower communities through education and social change. All services are confidential and free of charge to all victims of sexual violence.

Call our 24-hour crisis hotline now: (865) 522-7273

For more information visit:

mcnabbcenter.org/victim-services/



**Thank you to our
production sponsor**

SARA PHILLIPS

THE CAST

Mojdeh..... SUNIYAH (SUNNI) THOMAS
Diana..... ALLISON HAHN
Nikki..... GG GRIGSBY
Brandi..... MOLLY BRENNAN
Kara..... ALANA MARA
Eggo..... JORDAN GOSKOWICZ
Andy..... TREVOR SCHMITT-ERNST
Susannah..... LARA QING-BODIYA

UNDERSTUDY

U/S Brandi/Kara..... EMILY LUNA

Run Time:

1 hour and 40 minutes with no intermission

Advisories:

This production is recommended for mature audiences and contains adult language, substance use, profanity, and themes of sexuality and sexual violence throughout the performance. The characters navigate trauma, sex, and sexual assault.

After the show, please take a moment to fill out a brief 5-minute survey

tiny.utk.edu/cbtsurvey about your experiences at

HOW TO DEFEND YOURSELF.

Your feedback helps us better know our audiences, offer more programming and increases funding opportunities for the CBT.

Thank you in advance!

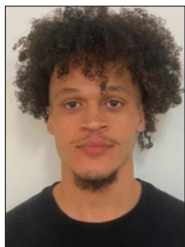
THE ACTORS



MOLLY BRENNAN

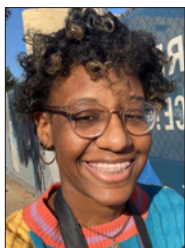
(Brandi) is honored and excited to be part of this thought-provoking production. She is a Theatre major and member of the campus long-form improv team, ISP.

Recently, she performed in *The Moors* at the Clarence Brown. Molly thanks her family, friends, and teachers for their infinite support and knowledge. She is grateful for this entire cast and crew for their wonderful personalities, intense dedication, and never-ending gifts. She also gives a special thanks to Liliana Padilla, for creating this brave and vulnerable play. She hopes you enjoy it.



JORDAN GOSKOWICZ

(Eggo) To all the women and girls out there, take notes and protect yourself! Love y'all.

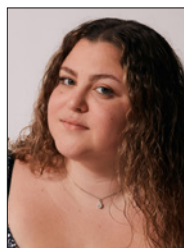


GG GRIGSBY

(Nikki) is currently pursuing a degree in Theatre with an Acting concentration at UTK. Her first role was as a Kanine Krunchy in *101 Dalmatians*. Recent work includes Ursula/

Watchman in *Much Ado About Nothing* and Rosie in *Sandbags* at TSC. Upcoming projects include: *Inherit the Wind* at the CBT. She enjoys rollerblading, listening

to music, and hanging with her dog in her free time. She's also not as shy as Nikki, so feel free to say hi.



ALLISON HAHN

(Diana) is a senior here at the University of Tennessee - Knoxville. Being from New Jersey, she has always loved live theater and has been acting since

she was eight years old. Some previous roles include William Dunn (*Men on Boats*), Aunt March (*Little Women*), and Antonio (*Twelfth Night*). Allie would like to thank Jayne and the creative crew for helping her every step of the way in this production.



ALANA MARA

(Kara) is very excited to be a part of her first Clarence Brown Lab Theatre production of *How to Defend Yourself*. The topic of sexual assault, sexual assault prevention,

and sexual assault awareness is very important to her as actress and an individual. She feels very honored to bring the role of Kara to life and hopes to make someone feel seen and understood. If you or someone you know or love has experienced sexual assault, dial the National Sexual Assault 24/7 Hotline: 1-800-656-4673. You are heard. You are seen.

THE ACTORS



LARA QING-BODIYA

(Susannah) is very excited to come back to the Clarence Brown Theatre after her debut last year in *A Christmas Carol*. Her credits also

include *Babe*, *The Sheep Pig* at Knoxville Children's Theater in Spring 2024. She would like to thank her family for all their support. Lara was born in Haifa, Israel and has lived in Israel, Canada and China before moving back to the US. She is a fifth grader at Sequoyah Elementary School and in her spare time, she loves hiking, painting and making butter slime.



TREVOR SCHMITT-ERNST

(Andy) is extremely excited to be a part of this great show! This is Trevor's third show at the Clarence Brown Theatre, he has played Mr. Makus/Strygal

in *Anon(ymous)* and Steve in *She Kills Monsters*. Trevor is a senior with a theatre major with minors in journalism and african studies. Beyond theatre, Trevor is a resident assistant at Geier/Robinson Halls. Trevor also works at SEC Network at UTK where he has run replay for the past four years, and works the jumbotron at Neyland Stadium. Trevor also has Crohn's disease and wants to increase visibility for everyone with invisible disabilities

in theatre. Trevor would like to thank his family and friends for their support! Thank you to all the cast and crew for a wonderful show!



SUNIYAH (SUNNI) THOMAS

(Mojdeh) is a sophomore at UTK. She is majoring in Astronomy and Physics with plans to be an astrophysicist for NASA. She is

so excited to be making her Clarence Brown debut as Mojdeh and has enjoyed getting back into theatre. Her previous achievements include Eponine in *Les Mis*. She wants to thank her mother Mariah, little sister Pearl, and her friends on campus for being supportive and encouraging during her college and theatrical career thus far.

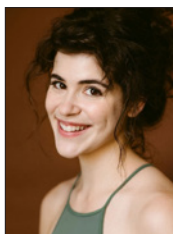
THE ARTISTS



JAYNE MORGAN

(Director) Jayne is a native of East Tennessee, born in Loudon and an alumna of UT Knoxville. In a long roller coaster of a career, she has lived and worked in LA, NYC and points in between

appearing on stage and in film. Favorite roles at CBT include Mama Williams in *Hank Williams: Lost Highway*, Maggie in *Dancing at Lughnasa*, Grandma Kurnitz in *Lost in Yonkers* among others. She's the founder of the Acting Freedom studio and was also Artistic Director for Flying Anvil Theatre. You can catch her work in the films *A Good Baby*, *Big Fish*, *Our Very Own* and *The Road Less Traveled*.



SAM-CLAIRE BIEBER

(Fight Director) is a Fight Director and an Advanced Actor Combatant with the SAFD (Society of American Fight Directors). She has taught

workshops for students at both UTK and UTC, the National Stage Combat Workshop, and other workshops in Dallas, Minneapolis, and Ann Arbor. Her choreography was last seen on the LAB stage in *Anonymouse*. Sam-Claire also works as a disability advocate helping to educate choreographers, teachers, and administrators on how to implement greater accessibility within the movement arts and theatre as a whole. When not crafting moments of violence for the stage you can find Sam-Claire demonstrating her stunning impression of a crow.



CASEY SAMS

(Intimacy Director) is Associate Department Head and Professor of Theatre at the University of Tennessee Knoxville where she teaches Movement, Acting, Musical Theatre, and

Dance to both undergraduate and graduate students. She earned her BA in Theatre and English Literature and her MS in Motor Learning and Control from Penn State. She is also a Certified Movement Analyst (CMA) in Laban Movement Analysis (LMA) from the Laban/Bartenieff Institute for Movement Studies. She has served on the faculty at Penn State, Interlochen Arts Camp, The Contemporary Art Center of Virginia, and The Governor's School for the Arts in Virginia. Prior to joining the faculty at UT, Casey served as the Education Director for Virginia Stage Company, where she created programming for students from pre-k to post-graduate. She has worked as a Director, Choreographer, Intimacy Choreographer, and Movement Coach at theatres across the country including The Clarence Brown Theatre, The Guthrie Theatre, Cincinnati Playhouse in the Park, St. Louis Repertory Theatre, The Roundhouse Theatre, Utah Shakespeare Festival, North Carolina Stage Company, PlayMakers Repertory, Virginia Stage Company, Pennsylvania Musical Theatre, The Knoxville Opera Company, and Vermont Stage Company. She is also a certified meditation teacher with the American Meditation Society and Koru Mindfulness.



ALONDRA CASTRO

(Scenic Designer) (she/her) is a first-year Scenic Design graduate student at the University of Tennessee. Previously she worked at Virginia Repertory Theater where she was the paint and

pops apprentice for two seasons. She is also a proud graduate of Angelo State University

THE ARTISTS

in San Angelo, TX and Richland College in Dallas, TX. Some of her previous scenic design work includes The Colored Museum with BVTA in Richmond Virginia, I and You and Bright Ideas with ASU Theater in San Angelo, TX.



TORI NIEMIEC

(Costume Designer) Originally from Arizona, Tori is a first-year costume designer in the MFA program. They have previously designed such shows as *A Midsummers Night Dream* (DC

Shakespeare in the Park), *Dance^2* (In Partnership with the University of Maryland), *The Waffle House Musical* (Andy's Summer Playhouse) in addition to assisting at The Folger Shakespeare Theatre, Signature Theatre VA, Disney Theatrical Cruise line and The Utah Shakespeare Festival.



DYLAN TILLERY

(Lighting Designer) Dylan is a first-year Lighting Design MFA candidate here at the University of Tennessee. This will be his first design at the Clarence Brown Lab Theatre. He received

his BFA in Lighting Design and Technology from the University of West Florida in 2024. Previously, he has worked for the Ohio Light Opera, the Pensacola Opera, and the Brevard Music Center.

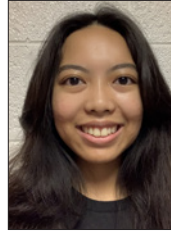


ELISABETH DUPUY

(Sound Designer) she/her- Elisabeth is a first-year Sound and Media MFA graduate student, graduating this past spring with a B.A. in Theater from George Mason University. Recent credits

include: *Beautiful Indifference* Capitol Fringe Festival, *Antigone*, Presented by the Girls of

St. Catherines GMU SoT, *Pippin* Imagination Stage, *9 to 5* GMU SoT, and *The Road to the End* Capitol Fringe Festival. IG: @lis.ekd



ADA HERMOSO

(Stage Manager) is a sophomore Psychology major attending the University of Tennessee-Knoxville from Clarksville, Tennessee. Ada is excited to be stage managing her first production at

the CBT! Theatre first piqued her interest in high school when she was able to play Martha in *Arsenic and Old Lace* but has since been engrossed with the role of stage manager after stage managing a production of *The Best Christmas Pageant Ever* during her senior year of high school. Since then, she has worked on productions like *Murder on the Orient Express* as the projections operator and has since enjoyed working as the stage manager for a staged live reading of *Delilah* and the assistant stage manager for *Anon(ymous)* at the Lab Theatre. Ada would like to thank all her family, friends, and mentors that have supported her journey up to this point and hope they will continue to do so in the future.



KENNETH MARTIN

(Department Head, Artistic Director) Ken comes from the University of Missouri, at Kansas City, where he was the Patricia McIlrath Endowed Professor and Chair of the Theatre

Division. His 26-year career in academia also included nearly 18 years serving as chair of the theater departments of Coastal Carolina University in South Carolina and Ashland University in Ohio. Tremendously successful as an administrator at both institutions, Martin navigated curricular revisions and development, managed resources effectively and efficiently, created innovative collaborations,

THE ARTISTS

cultivated significant enrollment growth, and forged international partnerships. A member of United Scenic Artists, his designs have been seen at theatres across the country including Kansas City Repertory Theatre, Florida Repertory Theatre, New Theatre, Ohio Light Opera, Cleveland Ensemble Theatre, Ocean State Theatre and many others. He has also designed shows for many colleges and universities including Marquette University, University of Wisconsin-Stevens Point, Coastal Carolina University, Cuyahoga Community College, and The Ohio State University. Martin has actively served his profession as a respondent for the Kennedy Center American College Theatre Festival, as a consultant for several regional theaters and through active participation in organizations like the United States Institute for Theatre Technology, Educational Theatre Association and the Southeastern Theatre Conference.



TOM CERVONE

(Managing Director)
Tom is grateful and honored to serve the Clarence Brown Theatre as Managing Director. Cervone has also served as executive director for both Dogwood Arts and

the Historic Tennessee Theatre Foundation, but the CBT/UTK Theatre Department is Tom's administrative and artistic home. Cervone arrived in Knoxville in 1989 as an MFA candidate in acting and was hired in May of 1993 as the company manager, then promoted to managing director in 1995. And for his brief foray downtown, Tom has been in this chair, blissfully, ever since. Tom is and has been very active within the UTK community, having served as Exempt Staff Council chair for many years, co-chair of the LGBT Commission, a member of the Diversity Council and many other UTK organizations. Cervone is a long-time board member of the WordPlayers and continues to evangelize

on behalf of the art and culture community locally and nationally. Tom received the Chancellor's Citation for Outstanding Service to the University in 2010. Cervone holds his undergraduate degree in Speech and English Education with an emphasis in Theatre from West Liberty University in West Virginia and a Master of Fine Arts and an MBA from UT. He is a graduate of and was selected as the Class Representative of the Leadership Knoxville class of 2011, the best class ever. Cervone was inducted into his undergraduate alma mater's class of 2015 Wall of Honor and was appointed by the Governor of WV in 2021 to serve as a member of the Board of Trustees of WLU.



SUSAN L. McMILLAN

(Production Manager)
Susan is in her eleventh year as Production Manager at the CBT and UT Department of Theatre. In addition, she teaches Stage Management. Prior, Susan was the Production

Manager and Stage Management Instructor at the University of California, Santa Barbara, for 6 years. Susan is a member of Actors' Equity Association, and was a Stage Manager at the Oregon Shakespeare Festival for 18 years. Additionally, she has stage managed at the Guthrie Theatre, Shakespeare Theatre Company, Portland Center Stage, PCPA, Rogue Valley Opera, Portland Civic Theatre, and has toured to the Kennedy Center. Through science (B.S. degrees in Biochemistry and Biology from Oregon State University) and music (cellist), Susan found her way into theatre (Minor in Theatre from OSU). She is incredibly grateful for all the opportunities and adventures along the way, inspirational mentors, artistic and talented colleagues, amazing students, and the love and support of her family and friends. And very grateful for Molly – woof! This season is fully dedicated to her beloved, beautiful, and deeply missed mother, Grace – a shining light forever.

Drive smarter local marketing
with insights and solutions from the
USA TODAY NETWORK.

**The power
of knowing
you are doing
things right.**

LOCALiQ
PART OF THE USA TODAY NETWORK

localiq.com

Available to Stream on
etpbs Passport Nov. 18 2024

INSIDE THE MIND OF A GENIUS



LEONARDO

DA VINCI

A FILM BY KEN BURNS,
SARAH BURNS AND DAVID McMAHON

east tennessee  PBS.

Become a member today.

www.EastTennesseePBS.org

**CLARENCE
BROWN
THEATRE**

AT THE UNIVERSITY OF TENNESSEE

STAY *Connected*

 **Tripadvisor**

Leave a review of your theatre-going
experience on Trip Advisor!



 **B97.5**
Commercial
**FREE
HOURS**



PRODUCTION CREW

MANAGEMENT

Assistant Director - **Julia Lowe**
Assistant Stage Managers - **Michelle Friedman**
and **Sophia Roberts**

COSTUMES

Assistant Costume Designer - **Catherine York**
Wardrobe Supervisor - **Amber Williams**
Assistant Wardrobe Supervisor - **Riya Golden**
Wardrobe Crew - **Amelia McCabe**
and **Grace VerStrate**

SCENERY

Deck Crew - **Megan O'Neal** and **Christian Tadlock**

LIGHTING

Assistant Lighting Designer - **Kayla Moore**
Light Board Operator/Electrician - **Jamie Burnett**

SOUND


Sound Board Operator - **Joshua Rodriguez**

SWING CREW

Benjamin Miller

The Lab Theatre provides an intimate theatre experience, located in the center of the University of Tennessee's Knoxville campus. Built in 1970 as part of the larger Clarence Brown Theatre building, The Lab Theatre is a 125-seat black box venue located in the heart of campus. Designed both as a theatre and to function as a classroom space for the department's acting classes, The Lab Theatre is home to our undergraduate and MFA students, and serves as an integral space for a variety of their projects and productions.


Coming Soon



**FAILURE:
A LOVE STORY**

By Philip Dawkins

MARCH 12 – APRIL 6



**The Lab
Theatre**

Photo: Gray Lancaster; by Sawn Poynter

CBT PRODUCTION STAFF

ADMINISTRATION

Artistic Director/Department Head -

Kenneth Martin

Managing Director - **Tom Cervone**

Associate Artistic Director - **Katie Lupica**

Marketing & Communications Director -

Mindy Cooper

Business Manager - **Tara Halstead**

Accounting Specialist - **Le Anna Jacobson**

Administrative Specialist - **Emily Pope**

General Manager - **Vickie Carter**

IT Specialist - **Mark Spurlock**

Graphic Designer - **Julie Anna Summers**

PATRON SERVICES

Manager of Ticketing and Sales -

Sarah Burton

Box Office Manager - **Brittany Spencer**

House Manager / Assistant Box Office

Manager - **Savannah Smith**

Audience Experience Manager -

David Ratliff

Patron Service Associates -

Faridat Akindele, Kelly Boyle, George Bull, Desirea Burke, Cearan Costello, Payden Daniels, Tyler Duncan, Isabel Fenech, Monica Gardiner, Tyler Glover, Max Jacob, Kevine Mahoro, Faith McManus, Emma Messengill, Breyana Meyer, Joseph Molitor, Shelby Perdue, Justin Spinella, Micheal Spurgeon, Jalen Smith, Lillian Snead, Jenna Tiger, Camden Tripp, Sarah Wahrmond, Madison Wall, Hogan Wayland, Sierra Woodard, and Jamison Yeager

ENGAGEMENT/DEVELOPMENT

External Relations Manager

Shelly Payne

Grants, Education, and

Outreach Manager

Hana Sherman

Tours, Workshops

David Brian Alley

Summer Acting Workshops, Talk Backs

Terry D. Alford

PRODUCTION

Production Manager - **Susan L. McMillan**

Rental Coordinator/Assistant Production

Manager - **Phyllis Belanger**

Production Stage Manager - **Patrick Lanczki**

COSTUMES

Costume Shop Manager -

Melissa Caldwell-Weddig

Cutter/Draper - **Kyle Andrew Schellinger**

Costumers - **Amber Williams and Liz Aaron**

Costume Assistants - **Matthew Carl,**

Riya Golden, Alex Heder, Kaelyn Marie and Tori Niemiec

ELECTRICS

Electrics Shop Manager - **Travis Gaboda**

Lead Electrician - **Jon Mohrman**

Lighting Assistants - **Miguel Santiago**

and **Dylan Tillery**

SCENERY

Technical Director - **Jason Fogarty**

Assistant Technical Director - **George Hairston**

Lead Carpenter - **Jerry D. Winkle**

Senior Carpenter - **Kyle L. Hooks**

Scene Shop Assistants - **Alondra Castro,**

Morgan Joyce, Justice Morris,

Alana Merson, Baylee Seymore,

Ava Longworth-Orr and Quin Tomlinson

Automation Assistant - **Brianna Britford**

Scenic Charge Artist - **Isabel Isaac**

Scenic Artist - **Michaela Lochen**

PROPERTIES

Props Supervisor/Props Designer - **Christy Fogarty**

Lead Properties Artisan - **Sarah Gaboda**

Properties Assistants - **Leilane Bertunes,**

Trevor Schmitt-Ernst, Benjamin Miller,

Abby-Noells Potter and Sophie Smrka

SOUND

Sound and Video Manager - **Chris Walters**

Sound Assistants - **Chance Beck, Allison Bucher,**

Elisabeth Dupuy and Amoirie Perteet

Fueling the Arts and the Audience



Pilot Company is proud to support the Clarence Brown Theatre's mission to enrich local culture and guide the next generation of artists.

Pilot[®]
COMPANY

FROM
CHOPIN
TO
COLTRANE
TO
CITY HALL

WUOT brings you the best of classical, jazz, and local news along with your favorite NPR programs. Tune in today at 91.9 FM, stream online at WUOT.org, or download the WUOT mobile app.

WUOT 91.9
fm
wuot.org  @wuotfm

npr



ROTARY INSPIRING THE WORLD

Come and visit a Rotary Club of Knoxville meeting. We meet every Tuesday at noon at the Crowne Plaza Hotel, where we hear great speakers and enjoy social networking and camaraderie. Founded in 1915, we are Knoxville's oldest and largest service club, with around 150 members and always looking for more. The club is apolitical and secular, welcoming members from all communities. Each year our club:

- Awards \$20,000 college scholarships
- Recognizes two Knox County teachers with \$500 awards and \$250 gift certificates
- Supports End Polio Now, Rotary International's signature project
- Sustains clean water projects in 115 villages in Thailand

Learn more at www.knoxvillerotary.org

UT Federal
Credit
Union



For *All* Who Love Tennessee

20 Years of Live Music

WDVX
89.9 fm
BLUE PLATE SPECIAL

IN DOWNTOWN KNOXVILLE

A Free
Live Radio
Show!



12 Noon
Mon-Sat



INHERIT THE WIND

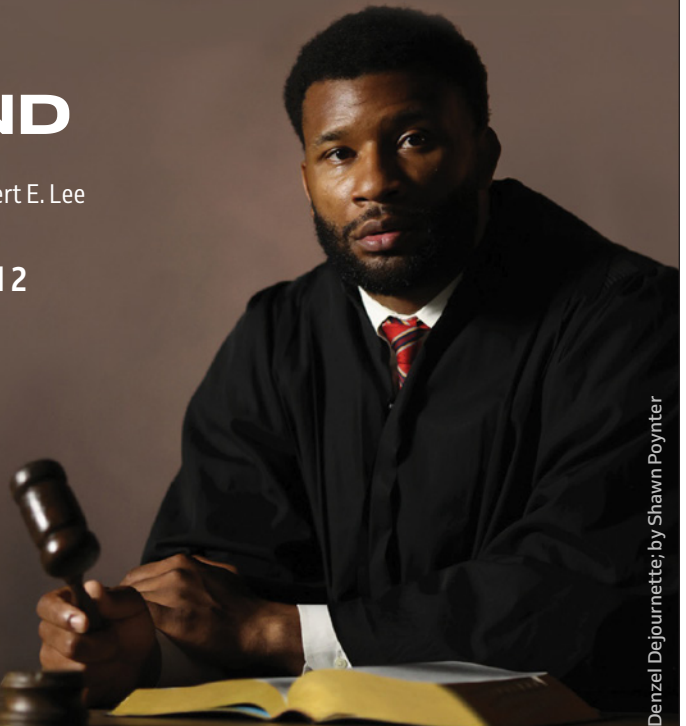
By Jerome Lawrence and Robert E. Lee

FEBRUARY 12 - MARH 2



CLARENCE
BROWN
THEATRE

AT THE UNIVERSITY OF TENNESSEE



Denzel Dejournette; by Shawn Poynter



THANK YOU

To Our Most Generous
2024/2025 Season Sponsors



ROCKIN' EARS FOR 42 YEARS!

WUTK offers an eclectic mix of music, including new releases, indie rock, alternative rock, classic alternatives, punk, reggae, hip hop, Americana, EDM, Jam Bands, local music, concert info, giveaways, and even sports, local talk & feature shows, and news.

On the Air and Streaming 24.7.365
WUTKRADIO.COM

or listen on your free TuneIn app



SOCIETY

Artists Circle

Pamela and James Given
Townes Lavidge Osborn
and Robert S. Marquis
Hei Park
Linda and Terry Tyler

Producers Circle

Myrwood Besozzi
Larry and Jeanie Brakebill
Peter Campbell
Bonnie Carroll
Elizabeth Carroll
Elizabeth Craig
Nancy Duckles
and Cameron Sears
Jeffrey Eberting
Vickie Ellis
Susan Farris
Howard Filston
Jayne De Fiore
Rosemary Gilliam
Amy Morris Hess
John and Susan Hoffman
Julie Howard
and Ted Flickinger
Susan Kornegay
Drs. Theresa Lee Love
and Jacob F. Love

Erica Lyon and Dylan Jones
Robert Madigan
Maureen Dunn McBride and Neil
G. McBride
Martha McCampbell
Arthur and Marsha Mitchell
Margie Nichols and John Gill
Linda Norris
Dr. Lee Riedinger
and Mary Zuhr
Patricia Roux
Susan Sgarlat and Charles Fels
Sandra Stoutt
Alice Torbett
Lynn Venafro
Capt. Kenneth Stark
and Nancy Voith
Donna Wertz
Wendy Wortham

Directors Circle

Sara Phillips
Donna Riggs
Jeffrey Smith
John and Delores Sorey

Rising Star

Misty Anderson
Julia Bentley

John Bushore
John Butler
Leann Dickson
Steve Drevik
Stanton Garner
Lauren Herbstritt
Jeffrey Kovac
Samantha Murphy
Dr. Howard C. Filston and Sandra
K. Stoutt
Alexander Waters

Leading Player

Sandra and Jay Aldrich
Andrea Anderson
Amy Caponetti
Lauren Chiles
Brooks and Karen Clark
Joan Clevenger
Michael Combs
Danielle Ely and Matt Tully
Moiria Ely
Tim Ezzell
Tara Halstead
Dennis Hayward
Julie Lohnes
Calvin and Rebecca MacLean
William Morrow
John North
Bonnie Ownley
Dave Snider
Robert Trigiano
Jessica Tucker
Georgiana Vines

CBT THANK YOU

Every gift, big or small, makes an impact on our students, our faculty and staff, the Clarence Brown Theatre, and the arts in this community. No matter the fund, we wanted to say thank you to our supporters. Contributions listed below are through July 2024. For corrections to your acknowledgement name, please contact Shelly Payne at shellypayne@utk.edu

Jay and Sandra Aldrich
Ronald Alexander
David Alley
Robert Alley
Virginia St. Ana
Andrea Anderson
Misty Anderson

Lucia Ashworth
T John Aushore
Jamie Ayres
Callie Bacon
Leslie Badaines
Jennifer Banner
Anne Becker

Dr. John M.
and Connie L. Begovich
John Begovich
Phyllis Belanger
Julia Bentley
Myrwood Besozzi
Larry Bounds

CBT THANK YOU

Randy Boyd
Charles Brakebill
Larry and Jeanie Brakebill
David Brandes
William Brewer II
Jill Brock
Kathleen Buckley
John Bushore
John Butler
Kieran Byrd
Peter Campbell
Amy Caponetti
Cynthia Moxley
and Alan Carmichael
Fay Carr
Fany Carrera
Bonnie Carroll
Elizabeth Carroll
Tom Cervone
and Susan Creswell
Jeffrey Cheek
Weiwei Chen
Lauren Chiles
Brooks and Karen Clark
Joan Clevenger
Michael Combs
Robin Conklin
Marcia Cook
James Cooper
Elizabeth Craig
Betsey Creekmore
Katharine Pearson Criss
Drs. Joseph C.
and Jayne C. De Fiore
Nancy DeCosta
Diana Dickey
Leann Dickson
Steve Drevik
Nancy Duckles
and Cameron Sears
Jan Duncan
Donald Dunning Jr.
Jeffrey Eberting
Vickie Ellis
Danielle Ely and Matt Tully
Moiria Ely

Tim Ezzell
Susan Farris
Norman Featherston
Joseph Ferguson
Howard Filston
Craig Fitzhugh
Christy and Jason Fogarty
East Tennessee Foundation
Scripps Howard Foundation
William France
Debra Freeberg
Kevin Galbreath
Brian Gard
Stanton Garner
Margie Nichols and John Gill
Rosemary Gilliam
Pamela and James Given
Chad Goldman
Tara and Scott Halstead
Katie Harrill
Haslam Family Foundation Inc.
Dennis Hayward
Charlotte Headrick
Joan Heminway
Lauren Herbstritt
William Herriage
Amy Morris Hess
John and Susan Hoffman
Charlotte Holland
Mary Hollenbeck
Thomas Hollenbeck
Sandra Holub
Julie Howard and Ted Flickinger
Leigh Hruby
Lori Ingle
Lyle Irish
Elisabeth Jackson
Larsen Jay
Carol Jenkins
Gretchen Burleigh-Johnson
Arthur Jones
Debbie Jones
Lucy Keh
Presley Keith
Philip King III
Andrea Kline

Mary Kois
Susan Kornegay
Jeffrey Kovac
Robert Lederer
Drs. Theresa Lee Love and
Jacob F. Love
Julie Lohnes
Mary Long
Erica Lyon and Dylan Jones
Calvin and Rebecca MacLean
Robert Madigan
Charles Maland
Stephen Mangum
Francine Marasco
Julia and Ken Martin
Stephen Martin
Maureen Dunn McBride
and Neil G. McBride
Rose Mary McCall
Martha McCampbell
Peter Mckee
Susan McMillan
Amanda Middleton
Gary Miller
Arthur and Marsha Mitchell
Pedro Tomas-Mitchell
Pedro Tomás and Roger Roark
Mark Mitchum
Carl Moore Jr.
Jane Moore
William Morrow
Robert Moss
Samantha Murphy
Mildred Myers
James Newburn
Margie Nichols and John Gill
Linda Norris
Margaret Norris
Carman North
John North
Estate of Jean C. Ogle
Terry Olberding
Townes Lavidge Osborn
and Robert S. Marquis
Bonnie Ownley
Hei Park

CBT THANK YOU

Kendall Parrott
Joseph and Shelly Payne
Meredith Peccolo
Brian Pendleton
G. Phillips
Linda Phillips
Sara Phillips
Christopher Pickart
David Pollard Jr.
Arnold Pomerance
Amy Pope
Vladimir Protopopescu
Sharon Pryse
David Ratliff
Charles Reiss
Dr. Lee Riedinger
and Mary Zuhr
Donna Riggs
Mary Ritchie
Lauren Roark
and Spencer Christensen
Deborah Rodday
Philip Royer
David Rutherford
Gina Di Salvo
Jane Sams
Eric Schmidt
Gerhardt Schneider
Bryan Self
Susan Sgarlat and Charles Fels
Patricia Roux-Sharp
Andrew Sheehy
Hana and Steve Sherman
Keith Shope Sr.
Shubert Foundation, Inc.
Jan Simek
Melinda Simmons
John Sipes
Kerstin Kilgo Sisco
Stephanie Slater
Shane Sloan
Jeffrey Smith
Dave Snider
John and Delores Sorey
Julie Sosebee
Mark Spurlock

Morgan Stanley
Nancy Stewart
Dr. Howard C. Filston
and Sandra K. Stoutt
Elizabeth and Wes Stowers
Stowers Machinery
Foundation, Inc.
Julie Anna Summers
Brooke Swart
Tyler Tallent
Lisa Thomas
Devon Thompson
Sam Tipton Jr.
Alice Torbett
Robert Trigiano
Jessica Tucker
Linda and Terry Tyler
Karen Valero
Lynn Venafro
Janna de Vente
Georgiana Vines
Capt. Kenneth Stark
and Nancy Voith
Stephanie Wall
Christopher Wallace
William Walter
Sharon Ward
Alexander Waters
Brent Waugh
Donna Wertz
Donald White
Amber Williams
Tammie Williams
Timothy Williams
Rhonda Wilson
Travis Wilson
Dr. Dale C. and
Wendy Wortham
Kenton Yeager
Cheryl Zamora

MARIAN BROWN'S CIRCLE

Pandy Anderson
David Andrews
Jeannette Brown

Amber Bilderback
Dennis Bussell
Christopher Clark
Greg Congleton
Mitzi Congleton
Steve Drevik
Vickie Ellis
Deborah Emery
Mardel Fehrenbach
Jim Given
Pamela Given
Gretchen Hartmann
John Hoffman
Julie Howard
Virginia Kerwin
Jerry Kornegay
Susan Kornegay
Sharon Kreis
Steve Krempasky
Robert Lacy
Stephen LaVie
Erica Lyon
Francine Marasco
Elizabeth Matlock
Vanessa McAfee
Maureen McBride
Sheena McCall
Martha McCampbell
Margie Nichols
Linda Norris
Hei Park
Sara Phillips
Elizabeth Pollock
Donna Riggs
Carol Shaffer
Helen Sirett
Helen Tews
Nadine Trainer
Jessica Tucker
Linda Tyler
Terry Tyler
Georgiana Vines
Nancy Voith
Donna Wertz

**CORPORATE, FOUNDATION
AND GRANT SUPPORT**

Arts & Cultural Alliance
City of Knoxville

The Department of
the Treasury
Mildred Haines and
William Elijah Morris

Lecture Endowment Fund
Knox County
Knox County Tourism
Consortium
Merchant & Gould
Pilot Company
Rotary Club of Knoxville
Tennessee Arts Commission
The Roy Cockrum Foundation

The Shubert Foundation, Inc.
UT Federal Credit Union
UT Institute of
American Civics

CLARENCE BROWN THEATRE

AT THE UNIVERSITY OF TENNESSEE

CBT ADVISORY BOARD - 2024/2025 OFFICERS AND MEMBERS

Alexander Waters - *Chair*

Julie Howard - *Immediate Past Chair*

Margie Nichols - *At-Large*

Will Brewer - *At-Large*

Jennifer Banner
Larry Brakebill
Will Brewer
Amy Caponetti
Lisa Carroll
Jeff Cheek
Brooks Clark
Katharine Pearson Criss
Leann Dickson
LeAnne Dougherty
Danielle Ely
Pamela Given
Amy Morris Hess

Michael Higdon
Julie Howard
Delphia Howze
Erica Lyon
Maureen Dunn McBride
Margie Nichols
Linda Norris
John North
Sara Phillips
Vladimir Protopopescu
Lee Riedinger
Tomi Robb
CortneyJo Sandidge

Susan Sgarlat
John Sorey
Pedro Tomás
Alice Torbett
Robin Turner
Terry Tyler
Georgiana Vines
Alexander Waters
Donna Wertz
Melanie Wood
Wendy Wortham

EMERITUS MEMBERS:

Joe De Fiore
Susan Farris
Sheena McCall
Townes Lavidge Osborn

EX-OFFICIO MEMBERS:

Kenneth Martin
Tom Cervone
Jessi Arnidis
Jan Simek
Stephanie Wall

2024/2025

FOUNDATION & GRANT PROFILES



Founded in 2014 by Roy Cockrum and Benita Hofstetter Koman with winnings from Mr. Cockrum's Powerball lottery

jackpot, the Foundation's mission is to award grants to support world-class performing arts projects in not-for-profit professional theatres throughout America. Since 2014, 39 flagship American theaters and performing arts organizations have received major grants from the Foundation.



The Shubert Foundation, Inc., was established in 1945 by Lee

and J.J. Shubert, in memory of their brother Sam and is dedicated to sustaining and advancing the live performing arts in the United States, with a particular emphasis on theatre and a secondary focus on dance. They are the nation's largest funder dedicated to unrestricted funding of not-for-profit theatres, dance companies, professional theatre training programs and related service agencies. The Shubert Foundation is especially interested in providing support to professional resident theatre and dance companies that develop and produce new American work.



Knox County Tourism Consortium

The Clarence Brown Theatre is a proud member of the **Arts & Culture Alliance's Knox County Tourism Consortium**, joining

with 24 arts and culture organizations who deliver more than 4,000 tourism geared events and activities. The visitors the consortium attracts to Knox County bring millions of dollars into the county as they patronize local restaurants, shops, vendors, and hotels. Pre-pandemic, the consortium attracted visitors from all fifty states and international visitors from more

than 80 countries to Knox County, bringing nearly \$18 million into the county with them. Visitors from surrounding East Tennessee counties have added more than \$16 million. The consortium supports \$12 million in jobs and pays \$18 million more to local vendors.



Knox County is a county in the U.S. state of Tennessee. As of the 2010 census, the population is 432,226. Its county seat and largest city is Knoxville. The county is at the geographical center

of the Great Valley of East Tennessee. Near the heart of the county is the origin of the Tennessee River at the union of the Holston and French Broad Rivers. Knox County was created on June 11, 1792 by Governor William Blount from parts of Greene and Hawkins counties, and has the distinction of being one of only eight counties created during territorial administration. It is one of nine United States counties named for American Revolutionary War general and first United States Secretary of War Henry Knox. Parts of Knox County later became Blount (1795), Anderson (1801), Roane (1801), and Union (1850) counties.



The Department of the Treasury is the executive agency responsible for promoting economic prosperity and ensuring the financial

security of the United States. The Department is responsible for a wide range of activities such as advising the President on economic and financial issues, encouraging sustainable economic growth, and fostering improved governance in financial institutions. The Department of the Treasury operates and maintains systems that are critical to the nation's financial infrastructure, such as the production of coin and currency, the disbursement of payments to the American public, revenue collection, and the borrowing of funds necessary to run the federal government. The Department works with other federal agencies, foreign governments, and international financial institutions to encourage global economic growth, raise standards of living, and to the extent possible, predict and prevent

economic and financial crises. The Treasury Department also performs a critical and far-reaching role in enhancing national security by implementing economic sanctions against foreign threats to the U.S., identifying and targeting the financial support networks of national security threats, and improving the safeguards of our financial systems.



Pilot Company's mission is to make life better for America's drivers. With more

than 650 locations nationwide, Pilot Company is the largest retail operator of travel centers in North America. At Pilot Company we believe it is essential to give back to the community. Our founder, Mr. James A. Haslam II, established our philanthropic spirit when he started the company in 1958. Our employees all take part in giving their time, talents and efforts to various organizations throughout the year. Together we work to make our communities better places to work, play and live. Visit www.pilotflyingj.com for more information.



City of Knoxville - Knoxville's roots run deep and strong. The city has served as the hub of the region since its founding in 1791. The

best of its Appalachian heritage remains today — a strong work ethic, a family-centered community, and an intense respect for the natural beauty that envelops the region. The metropolitan Knoxville area was ranked the "best place to live in the United States and Canada" among cities with a population of fewer than 1 million. The ranking came from the Millennium edition of Places Rated Almanac. The results confirmed what most in this area have known for a long time - Knoxville is one of the best cities in the country!



The **Tennessee Arts Commission**, was created in 1967 by the Tennessee General Assembly

with the special mandate to stimulate and encourage the presentation of the visual, literary, music and performing arts and to encourage public interest in the cultural heritage of Tennessee. TN Arts

Commission Governing Policies can be found here. The mission of the Tennessee Arts Commission is to cultivate the arts for the benefit of all Tennesseans and their communities. Our vision is a Tennessee where the arts inspire, connect and enhance everyday lives. The Commission is supported by in part by the National Endowment for the Arts.

The Mildred Haines and William Elijah Morris Lecture Endowment supports campus visits of lecturers and scholars in all disciplines in the College of Arts and Sciences. The dean of the college solicits proposals from departments and academic programs for the use of the funds, appoints an advisory committee to review and make recommendations regarding the proposals, and makes awards to the successful proposals. The advisory committee has a representative from the humanities, the social sciences, the natural sciences and the arts faculties of the college. The committee selects a chairperson from among its members. Committee members serve two-year terms and may be reappointed at the discretion of the dean.



Institute of American Civics - In a time of proliferating distrust and political polarization, the Institute of American Civics housed in The Baker School of Public Policy and Public

Affairs presents a remarkable opportunity to address these challenges, beginning with undergraduates on the University of Tennessee, Knoxville, campus and then extending more broadly to the entire UT system and to the State of Tennessee as a whole. The institute is committed to improving civic knowledge and civil discourse through courses, student programs, public events, and K-12 outreach. With a strong bipartisan backing, the 112th Tennessee General Assembly created the Institute of American Civics to strengthen civic education and participation while reviving thoughtfulness, civility, and respect for opposing viewpoints in national discourse.

10 WEATHER IMPACT ALERT

TRACK THE **IMPACT**. BE **PREPARED**. STAY **SAFE**.

STEP 1

DOWNLOAD THE
10NEWS APP

STEP 2

ASSEMBLE A
WEATHER IMPACT KIT

STEP 3

HAVE AN
EMERGENCY PLAN

DOWNLOAD THE
10NEWS APP NOW



GET **WEATHER IMPACT DAY**
ALERTS, FORECASTS, AND UPDATES.

Stream newscasts on +app on **ROKU**   Watch on **Apple TV**

24.25 SEASON



KNOXVILLE

Book by Frank Galati;
Music by Stephen Flaherty;
Lyrics by Lynn Ahrens
Directed and Choreographed
by Josh Rhodes
Based on the Asolo Rep
production directed
by Frank Galati
Adapted from
A Death in the Family
by James Agee
and *All the Way Home*
by Tad Mosel

SEPT. 4-22 | CBT

CRY IT OUT

By Molly Smith Metzler
SEPT. 18 – OCT. 5
The Lab Theatre

HOW TO DEFEND YOURSELF

By Liliana Padilla
OCT. 23 – NOV. 10
The Lab Theatre

A CHRISTMAS CAROL

By Charles Dickens
Adapted by Edward Morgan
and Joseph Hanreddy;
Music by John Tanner
NOV. 21 – DEC. 21 | CBT

INHERIT THE WIND

By Jerome Lawrence
and Robert E. Lee
FEB. 12 – MAR. 2 | CBT

FAILURE: A LOVE STORY

By Philip Dawkins
MAR. 12 – APR. 6
The Lab Theatre

THE PLAY THAT GOES WRONG

By Jonathan Sayer,
Henry Shields, and
Henry Lewis
APRIL 16 – MAY 4 | CBT

**CLARENCE
BROWN
THEATRE**

AT THE UNIVERSITY OF TENNESSEE

(865) 974-5161
clarencebrowntheatre.com

