



# HOW TO DEFEND YOURSELF

By LILIANA PADILLA

OCT 23 - NOV 10



CLARENCE  
BROWN  
THEATRE

AT THE UNIVERSITY OF TENNESSEE



Photo: Abigail McCarter in THE MOORS by Ella Marston

# CLARENCE BROWN THEATRE

AT THE UNIVERSITY OF TENNESSEE

**Your Theatre. Your Stories.**

***Celebrating more than 50-years  
of professional theatre!***

For more than 50 years, Clarence Brown Theatre (CBT) has told meaningful stories by providing world-class live theatre to nearly 40,000 patrons who visit us each season. The CBT season runs from September through May and features seven productions ranging from musicals to drama and provides a cultural resource and professional theatre for both the University of Tennessee Knoxville and the larger East Tennessee community.

865-974-5161  
clarencebrowntheatre.com



THE UNIVERSITY OF  
TENNESSEE  
KNOXVILLE

DEPARTMENT OF THEATRE

MFA IN ACTING  
MFA IN DESIGN  
BA IN THEATRE

**KENNETH MARTIN**  
*Artistic Director,  
Department Head*

**TOM CERVONE**  
*Managing Director*

865-974-6011  
theatre.utk.edu

# CLARENCE BROWN THEATRE

presents

## HOW TO DEFEND YOURSELF

By **Liliana Padilla**

Directed by **JAYNE MORGAN**

Fight Director **SAM-CLAIRE BIEBER**

Intimacy Director **CASEY SAMS**

Scenic Designer  
**ALONDRA CASTRO**

Costume Designer  
**TORI NIEMIEC**

Lighting Designer  
**DYLAN TILLERY**

Sound Designer  
**ELISABETH DUPUY**

Stage Manager  
**ADA HERMOSO**

Department Head,  
Artistic Director  
**KENNETH MARTIN**

Managing Director  
**TOM CERVONE**

Production Manager  
**SUSAN L. MCMILLAN**

'How To Defend Yourself' had its Off-Broadway Premiere at New York Theatre Workshop  
Patricia McGregor, Artistic Director | Jeremy Blocker, Executive Director

'How To Defend Yourself' World Premiere Production at the 2019 Humana Festival of New American Plays at  
Actors Theatre of Louisville and at Victory Gardens Theater

Developed by: UC San Diego, Wagner New Play Festival 2018 Production directed by Kim Rubinstein Mentored by Naomi Izuka,  
Kim Rubinstein, Deborah Stein, Allan Havis, Dramaturgy: Gabe Greene, Dylan Key; Script Consultants: Ali Viterbi

Victory Gardens Theater, Chicago, Illinois Chay Yew, Artistic Director, Erica Daniels, Managing Director  
IGNITION Festival of New Plays 2018 Workshop and productions at Victory Gardens and Actors Theatre directed by Marti Lyons

Developed at the Ojai Playwrights Conference; Robert Egan, Artistic Director/Producer; Workshop directed by Danya Taymor;  
Dramaturgy: Sasha Emerson

'How To Defend Yourself' was supported by residencies at the Blue Mountain Center and the Anderson Center at Tower View

**THE VIDEOTAPING OR MAKING OF ELECTRONIC OR OTHER AUDIO AND/OR VISUAL RECORDINGS OF THIS PRODUCTION AND DISTRIBUTING RECORDINGS OR STREAMS IN ANY MEDIUM, INCLUDING THE INTERNET, IS STRICTLY PROHIBITED, A VIOLATION OF THE AUTHOR(S)'S RIGHTS AND ACTIONABLE UNDER UNITED STATES COPYRIGHT LAW. FOR MORE INFORMATION, PLEASE VISIT: <https://concordtheatricals.com/resources/protecting-artists>**

THE SHUBERT  
FOUNDATION INC.

Arts & Culture Alliance

KNOX COUNTY  
TOURISM CONSORTIUM

KNOX COUNTY  
TENNESSEE

CITY OF KNOXVILLE

Sara Phillips



This project is being supported in whole or in part by federal award number 21.027 awarded to the City of Knoxville by the U.S. Department of the Treasury and the Arts & Culture Alliance.

Cover photo: Molly Brennan by Shawn Poynter

# ABOUT THE AUTHOR



**LILIANA PADILLA's** work explores community, the body, power and healing. *How to Defend Yourself* won the Yale Drama Series Prize, was an international Susan Smith Blackburn Prize Finalist and was featured on The Kilroy's list. Liliana's work has been produced at the Humana Festival, Victory Gardens Theatre and the La Jolla Playhouse, and workshopped at Oregon Shakespeare Festival, Hedgebrook and the Ojai Playwrights Conference. Liliana teaches at Dartmouth College and the Sewanee Writers Conference. MFA Playwriting: UCSD, BFA Theatre: NYU.

COMING SOON

Charles Dickens'

## A CHRISTMAS CAROL

Adapted by Edward Morgan  
and Joseph Hanreddy

Music by John Tanner

NOV 21 – DEC 21

CLARENCE  
BROWN  
THEATRE  
AT THE UNIVERSITY OF TENNESSEE



Jed Diamond; by Shawn Poynter

## FROM THE **ARTISTIC DIRECTOR**

The theatre at the University of Tennessee has always tried to produce shows relevant to our students. In *How to Defend Yourself* we find a fierce and poignant exploration of trauma, self-empowerment, and the ways in which violence impacts our sense of self and the university community. The play challenges us to consider the complexities of power dynamics in intimate relationships, and how our desire for control over our bodies and our safety can become entangled in larger systems of violence and fear. With a blend of humor and vulnerability, the play examines what it means to "defend" oneself—not just from physical harm, but from internalized shame, guilt, and societal expectations.



The play's title, *How to Defend Yourself*, suggests a direct, instructional guide. But as the characters' interactions unfold, it becomes clear that there is no easy guide to navigating the intersections of personal safety, sexual agency, and trauma. The rawness of the characters' experiences and their attempts to reclaim power reflect the complexities we face in contemporary culture, where conversations about consent, gender roles, and identity are more urgent than ever.

At its core, this play offers no simple resolutions. Instead, it invites us into a space of tension, where defense mechanisms—whether physical, emotional, or psychological—are questioned and dismantled. The characters' journey is a reminder that healing is not linear, and the fight for autonomy is deeply personal, yet profoundly collective.

Thank you for joining us in the theatre!

**Ken Martin**

## COMMUNITY PARTNER



**Sexual Assault Center**  
*of East Tennessee*

The Sexual Assault Center of East Tennessee (SACET) was founded in 1973 as the Knoxville Rape Crisis Center and remains one of two comprehensive, community sexual assault agencies in the state of Tennessee. The mission of SACET is to provide excellent and compassionate services for survivors of sexual assault and to empower communities through education and social change. All services are confidential and free of charge to all victims of sexual violence.

**Call our 24-hour crisis hotline now: (865) 522-7273**

For more information visit:  
**[mcnabbcenter.org/victim-services/](http://mcnabbcenter.org/victim-services/)**



**Thank you to our  
production sponsor  
SARA PHILLIPS**

# THE CAST

Mojdeh.....	SUNIAH (SUNNI) THOMAS
Diana .....	ALLISON HAHN
Nikki .....	GG GRIGSBY
Brandi .....	MOLLY BRENNAN
Kara .....	ALANA MARA
Eggo .....	JORDAN GOSKOWICZ
Andy .....	TREVOR SCHMITT-ERNST
Susannah.....	LARA QING-BODIYA

## UNDERSTUDY

U/S Brandi/Kara.....	EMILY LUNA
----------------------	------------

### Run Time:

1 hour and 40 minutes with no intermission

### Advisories:

This production is recommended for mature audiences and contains adult language, substance use, profanity, and themes of sexuality and sexual violence throughout the performance. The characters navigate trauma, sex, and sexual assault.

After the show, please take a moment to fill out a brief 5-minute survey

[tiny.utk.edu/cbtsurvey](https://tiny.utk.edu/cbtsurvey) about your experiences at

### *HOW TO DEFEND YOURSELF.*

Your feedback helps us better know our audiences, offer more programming and increases funding opportunities for the CBT.

**Thank you in advance!**



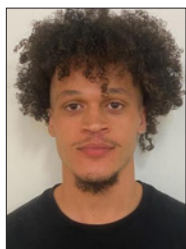
# THE ACTORS



## **MOLLY BRENNAN**

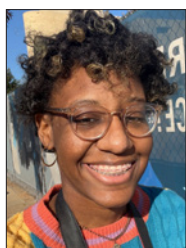
(Brandi) is honored and excited to be part of this thought-provoking production. She is a Theatre major and member of the campus long-form improv team, ISP.

Recently, she performed in *The Moors* at the Clarence Brown. Molly thanks her family, friends, and teachers for their infinite support and knowledge. She is grateful for this entire cast and crew for their wonderful personalities, intense dedication, and never-ending gifts. She also gives a special thanks to Liliana Padilla, for creating this brave and vulnerable play. She hopes you enjoy it.



## **JORDAN GOSKOWICZ**

(Eggo) To all the women and girls out there, take notes and protect yourself! Love y'all.

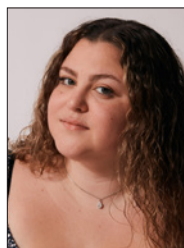


## **GG GRIGSBY**

(Nikki) is currently pursuing a degree in Theatre with an Acting concentration at UTK. Her first role was as a Kanine Krunchy in *101 Dalmatians*. Recent work includes Ursula/

Watchman in *Much Ado About Nothing* and Rosie in *Sandbags* at TSC. Upcoming projects include: *Inherit the Wind* at the CBT. She enjoys rollerblading, listening

to music, and hanging with her dog in her free time. She's also not as shy as Nikki, so feel free to say hi.



## **ALLISON HAHN**

(Diana) is a senior here at the University of Tennessee - Knoxville. Being from New Jersey, she has always loved live theater and has been acting since

she was eight years old. Some previous roles include William Dunn (*Men on Boats*), Aunt March (*Little Women*), and Antonio (*Twelfth Night*). Allie would like to thank Jayne and the creative crew for helping her every step of the way in this production.



## **ALANA MARA**

(Kara) is very excited to be a part of her first Clarence Brown Lab Theatre production of *How to Defend Yourself*. The topic of sexual assault, sexual assault prevention,

and sexual assault awareness is very important to her as actress and an individual. She feels very honored to bring the role of Kara to life and hopes to make someone feel seen and understood. If you or someone you know or love has experienced sexual assault, dial the National Sexual Assault 24/7 Hotline: 1-800-656-4673. You are heard. You are seen.



# THE ACTORS



## **LARA QING-BODIYA**

(Susannah) is very excited to come back to the Clarence Brown Theatre after her debut last year in *A Christmas Carol*. Her credits also

include *Babe*, *The Sheep Pig* at Knoxville Children's Theater in Spring 2024. She would like to thank her family for all their support. Lara was born in Haifa, Israel and has lived in Israel, Canada and China before moving back to the US. She is a fifth grader at Sequoyah Elementary School and in her spare time, she loves hiking, painting and making butter slime.



## **TREVOR SCHMITT-ERNST**

(Andy) is extremely excited to be a part of this great show! This is Trevor's third show at the Clarence Brown Theatre, he has played Mr. Makus/Strygal

in *Anon(ymous)* and Steve in *She Kills Monsters*. Trevor is a senior with a theatre major with minors in journalism and africana studies. Beyond theatre, Trevor is a resident assistant at Geier/Robinson Halls. Trevor also works at SEC Network at UTK where he has run replay for the past four years, and works the jumbotron at Neyland Stadium. Trevor also has Crohn's disease and wants to increase visibility for everyone with invisible disabilities

in theatre. Trevor would like to thank his family and friends for their support! Thank you to all the cast and crew for a wonderful show!

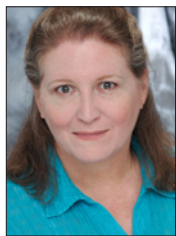


## **SUNIYAH (SUNNI) THOMAS**

(Mojdeh) is a sophomore at UTK. She is majoring in Astronomy and Physics with plans to be an astrophysicist for NASA. She is

so excited to be making her Clarence Brown debut as Mojdeh and has enjoyed getting back into theatre. Her previous achievements include Eponine in *Les Mis*. She wants to thank her mother Mariah, little sister Pearl, and her friends on campus for being supportive and encouraging during her college and theatrical career thus far.

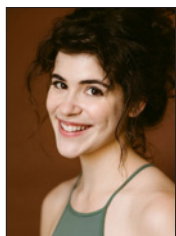
# THE ARTISTS



## JAYNE MORGAN

(Director) Jayne is a native of East Tennessee, born in Loudon and an alumna of UT Knoxville. In a long roller coaster of a career, she has lived and worked in LA, NYC and points in between

appearing on stage and in film. Favorite roles at CBT include Mama Williams in *Hank Williams: Lost Highway*, Maggie in *Dancing at Lughnasa*, Grandma Kurnitz in *Lost in Yonkers* among others. She's the founder of the Acting Freedom studio and was also Artistic Director for Flying Anvil Theatre. You can catch her work in the films *A Good Baby*, *Big Fish*, *Our Very Own* and *The Road Less Traveled*.



## SAM-CLAIRE BIEBER

(Fight Director) is a Fight Director and an Advanced Actor Combatant with the SAFD (Society of American Fight Directors). She has taught

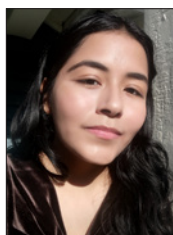
workshops for students at both UTK and UTC, the National Stage Combat Workshop, and other workshops in Dallas, Minneapolis, and Ann Arbor. Her choreography was last seen on the LAB stage in *Anon(ymous)*. Sam-Claire also works as a disability advocate helping to educate choreographers, teachers, and administrators on how to implement greater accessibility within the movement arts and theatre as a whole. When not crafting moments of violence for the stage you can find Sam-Claire demonstrating her stunning impression of a crow.



## CASEY SAMS

(Intimacy Director) is Associate Department Head and Professor of Theatre at the University of Tennessee Knoxville where she teaches Movement, Acting, Musical Theatre, and

Dance to both undergraduate and graduate students. She earned her BA in Theatre and English Literature and her MS in Motor Learning and Control from Penn State. She is also a Certified Movement Analyst (CMA) in Laban Movement Analysis (LMA) from the Laban/Bartenieff Institute for Movement Studies. She has served on the faculty at Penn State, Interlochen Arts Camp, The Contemporary Art Center of Virginia, and The Governor's School for the Arts in Virginia. Prior to joining the faculty at UT, Casey served as the Education Director for Virginia Stage Company, where she created programming for students from pre-k to post-graduate. She has worked as a Director, Choreographer, Intimacy Choreographer, and Movement Coach at theatres across the country including The Clarence Brown Theatre, The Guthrie Theatre, Cincinnati Playhouse in the Park, St. Louis Repertory Theatre, The Roundhouse Theatre, Utah Shakespeare Festival, North Carolina Stage Company, PlayMakers Repertory, Virginia Stage Company, Pennsylvania Musical Theatre, The Knoxville Opera Company, and Vermont Stage Company. She is also a certified meditation teacher with the American Meditation Society and Koru Mindfulness.



## ALONDRA CASTRO

(Scenic Designer) (she/her) is a first-year Scenic Design graduate student at the University of Tennessee. Previously she worked at Virginia Repertory Theater where she was the paint and

pops apprentice for two seasons. She is also a proud graduate of Angelo State University

# THE ARTISTS

in San Angelo, TX and Richland College in Dallas, TX. Some of her previous scenic design work includes The Colored Museum with BVTA in Richmond Virginia, I and You and Bright Ideas with ASU Theater in San Angelo, TX.



## TORI NIEMIEC

(Costume Designer)

Originally from Arizona, Tori is a first-year costume designer in the MFA program. They have previously designed such shows as *A Midsummers Night Dream* (DC

Shakespeare in the Park), *Dance^2* (In Partnership with the University of Maryland), *The Waffle House Musical* (Andy's Summer Playhouse) in addition to assisting at The Folger Shakespeare Theatre, Signature Theatre VA, Disney Theatrical Cruise line and The Utah Shakespeare Festival.



## DYLAN TILLERY

(Lighting Designer) Dylan is a first-year Lighting Design MFA candidate here at the University of Tennessee. This will be his first design at the Clarence Brown Lab Theatre. He received

his BFA in Lighting Design and Technology from the University of West Florida in 2024. Previously, he has worked for the Ohio Light Opera, the Pensacola Opera, and the Brevard Music Center.

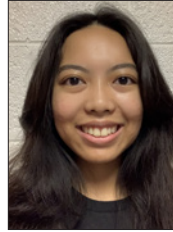


## ELISABETH DUPUY

(Sound Designer) she/her- Elisabeth is a first-year Sound and Media MFA graduate student, graduating this past spring with a B.A. in Theater from George Mason University. Recent credits

include: *Beautiful Indifference* Capitol Fringe Festival, *Antigone*, Presented by the Girls of

St. Catherines GMU SoT, *Pippin* Imagination Stage, *9 to 5* GMU SoT, and *The Road to the End* Capitol Fringe Festival. IG: @lis.ekd



## ADA HERMOSO

(Stage Manager) is a sophomore Psychology major attending the University of Tennessee-Knoxville from Clarksville, Tennessee. Ada is excited to be stage managing her first production at

the CBT! Theatre first piqued her interest in high school when she was able to play Martha in *Arsenic and Old Lace* but has since been engrossed with the role of stage manager after stage managing a production of *The Best Christmas Pageant Ever* during her senior year of high school. Since then, she has worked on productions like *Murder on the Orient Express* as the projections operator and has since enjoyed working as the stage manager for a staged live reading of *Delilah* and the assistant stage manager for *Anonym(ous)* at the Lab Theatre. Ada would like to thank all her family, friends, and mentors that have supported her journey up to this point and hope they will continue to do so in the future.



## KENNETH MARTIN

(Department Head, Artistic Director) Ken comes from the University of Missouri, at Kansas City, where he was the Patricia McIlrath Endowed Professor and Chair of the Theatre

Division. His 26-year career in academia also included nearly 18 years serving as chair of the theater departments of Coastal Carolina University in South Carolina and Ashland University in Ohio. Tremendously successful as an administrator at both institutions, Martin navigated curricular revisions and development, managed resources effectively and efficiently, created innovative collaborations,

# THE ARTISTS

cultivated significant enrollment growth, and forged international partnerships. A member of United Scenic Artists, his designs have been seen at theatres across the country including Kansas City Repertory Theatre, Florida Repertory Theatre, New Theatre, Ohio Light Opera, Cleveland Ensemble Theatre, Ocean State Theatre and many others. He has also designed shows for many colleges and universities including Marquette University, University of Wisconsin-Stevens Point, Coastal Carolina University, Cuyahoga Community College, and The Ohio State University. Martin has actively served his profession as a respondent for the Kennedy Center American College Theatre Festival, as a consultant for several regional theaters and through active participation in organizations like the United States Institute for Theatre Technology, Educational Theatre Association and the Southeastern Theatre Conference.



## **TOM CERVONE**

(Managing Director)

Tom is grateful and honored to serve the Clarence Brown Theatre as Managing Director. Cervone has also served as executive director for both Dogwood Arts and

the Historic Tennessee Theatre Foundation, but the CBT/UTK Theatre Department is Tom's administrative and artistic home. Cervone arrived in Knoxville in 1989 as an MFA candidate in acting and was hired in May of 1993 as the company manager, then promoted to managing director in 1995. And for his brief foray downtown, Tom has been in this chair, blissfully, ever since. Tom is and has been very active within the UTK community, having served as Exempt Staff Council chair for many years, co-chair of the LGBT Commission, a member of the Diversity Council and many other UTK organizations. Cervone is a long-time board member of the WordPlayers and continues to evangelize

on behalf of the art and culture community locally and nationally. Tom received the Chancellor's Citation for Outstanding Service to the University in 2010. Cervone holds his undergraduate degree in Speech and English Education with an emphasis in Theatre from West Liberty University in West Virginia and a Master of Fine Arts and an MBA from UT. He is a graduate of and was selected as the Class Representative of the Leadership Knoxville class of 2011, the best class ever. Cervone was inducted into his undergraduate alma mater's class of 2015 Wall of Honor and was appointed by the Governor of WV in 2021 to serve as a member of the Board of Trustees of WLU.



## **SUSAN L. McMILLAN**

(Production Manager)

is in her eleventh year as Production Manager at the CBT and UT Department of Theatre. In addition, she teaches Stage Management. Prior, Susan was the Production

Manager and Stage Management Instructor at the University of California, Santa Barbara, for 6 years. Susan is a member of Actors' Equity Association, and was a Stage Manager at the Oregon Shakespeare Festival for 18 years. Additionally, she has stage managed at the Guthrie Theatre, Shakespeare Theatre Company, Portland Center Stage, PCPA, Rogue Valley Opera, Portland Civic Theatre, and has toured to the Kennedy Center. Through science (B.S. degrees in Biochemistry and Biology from Oregon State University) and music (cellist), Susan found her way into theatre (Minor in Theatre from OSU). She is incredibly grateful for all the opportunities and adventures along the way, inspirational mentors, artistic and talented colleagues, amazing students, and the love and support of her family and friends. And very grateful for Molly – woof! This season is fully dedicated to her beloved, beautiful, and deeply missed mother, Grace – a shining light forever.

Drive smarter local marketing  
with insights and solutions from the  
USA TODAY NETWORK.

**The power  
of knowing  
you are doing  
things right.**

**LOCALiQ**  
PART OF THE USA TODAY NETWORK

[localiq.com](http://localiq.com)

Available to Stream on  
etpbs Passport Nov. 18 2024

INSIDE THE MIND OF A GENIUS



**LEONARDO**  
"DA VINCI"

A FILM BY KEN BURNS,  
SARAH BURNS AND DAVID McMAHON

east  
tennessee  PBS.

Become a member today.

[www.EastTennesseePBS.org](http://www.EastTennesseePBS.org)

**CLARENCE  
BROWN  
THEATRE**  
AT THE UNIVERSITY OF TENNESSEE

**STAY** *Connected*



**Tripadvisor**

Leave a review of your theatre-going  
experience on Trip Advisor!



 **B97.5**  
**Commercial**  
**FREE**  
**HOURS**





# PRODUCTION CREW

## MANAGEMENT

Assistant Director - **Julia Lowe**  
Assistant Stage Managers - **Michelle Friedman**  
and **Sophia Roberts**

## COSTUMES

Assistant Costume Designer - **Catherine York**  
Wardrobe Supervisor - **Amber Williams**  
Assistant Wardrobe Supervisor - **Riya Golden**  
Wardrobe Crew - **Amelia McCabe**  
and **Grace VerStrate**

## SCENERY

Deck Crew - **Megan O'Neal** and **Christian Tadlock**

## LIGHTING

Assistant Lighting Designer - **Kayla Moore**  
Light Board Operator/Electrician - **Jamie Burnett**

## SOUND

Sound Board Operator - **Joshua Rodriguez**

## SWING CREW

**Benjamin Miller**

→

**The Lab Theatre** provides an intimate theatre experience, located in the center of the University of Tennessee's Knoxville campus. Built in 1970 as part of the larger Clarence Brown Theatre building, The Lab Theatre is a 125-seat black box venue located in the heart of campus. Designed both as a theatre and to function as a classroom space for the department's acting classes, The Lab Theatre is home to our undergraduate and MFA students, and serves as an integral space for a variety of their projects and productions.

→

**Coming Soon**



# FAILURE: A LOVE STORY

By Philip Dawkins

**MARCH 12 – APRIL 6**



**The Lab**  
Theatre

Photo: Gray Lancaster; by Sawn Poynter



# CBT PRODUCTION STAFF

## ADMINISTRATION

Artistic Director/Department Head -

**Kenneth Martin**

Managing Director - **Tom Cervone**

Associate Artistic Director - **Katie Lupica**

Marketing & Communications Director -

**Mindy Cooper**

Business Manager - **Tara Halstead**

Accounting Specialist - **Le Anna Jacobson**

Administrative Specialist - **Emily Pope**

General Manager - **Vickie Carter**

IT Specialist - **Mark Spurlock**

Graphic Designer - **Julie Anna Summers**

## PATRON SERVICES

Manager of Ticketing and Sales -

**Sarah Burton**

Box Office Manager - **Brittany Spencer**

House Manager / Assistant Box Office

Manager - **Savannah Smith**

Audience Experience Manager -

**David Ratliff**

Patron Service Associates -

**Faridat Akindele, Kelly Boyle, George Bull, Desirea Burke, Cearan Costello, Payden Daniels, Tyler Duncan, Isabel Fenech, Monica Gardiner, Tyler Glover, Max Jacob, Kevine Mahoro, Faith McManus, Emma Messengill, Breyana Meyer, Joseph Molitor, Shelby Perdue, Justin Spinella, Micheal Spurgeon, Jalen Smith, Lillian Snead, Jenna Tiger, Camden Tripp, Sarah Wahrmund, Madison Wall, Hogan Wayland, Sierra Woodard, and Jamison Yeager**

## ENGAGEMENT/DEVELOPMENT

External Relations Manager

**Shelly Payne**

Grants, Education, and

Outreach Manager

**Hana Sherman**

Tours, Workshops

**David Brian Alley**

Summer Acting Workshops, Talk Backs

**Terry D. Alford**

## PRODUCTION

Production Manager - **Susan L. McMillan**

Rental Coordinator/Assistant Production

Manager - **Phyllis Belanger**

Production Stage Manager - **Patrick Lanczki**

## COSTUMES

Costume Shop Manager -

**Melissa Caldwell-Weddig**

Cutter/Draper - **Kyle Andrew Schellinger**

Costumers - **Amber Williams and Liz Aaron**

Costume Assistants - **Matthew Carl,**

**Riya Golden, Alex Heder, Kaelyn Marie**

**and Tori Niemiec**

## ELECTRICS

Electrics Shop Manager - **Travis Gaboda**

Lead Electrician - **Jon Mohrman**

Lighting Assistants - **Miguel Santiago**

**and Dylan Tillery**

## SCENERY

Technical Director - **Jason Fogarty**

Assistant Technical Director - **George Hairston**

Lead Carpenter - **Jerry D. Winkle**

Senior Carpenter - **Kyle L. Hooks**

Scene Shop Assistants - **Alondra Castro,**

**Morgan Joyce, Justice Morris,**

**Alana Merson, Baylee Seymore,**

**Ava Longworth-Orr and Quin Tomlinson**

Automation Assistant - **Brianna Britford**

Scenic Charge Artist - **Isabel Isaac**

Scenic Artist - **Michaela Lochen**

## PROPERTIES

Props Supervisor/Props Designer - **Christy Fogarty**

Lead Properties Artisan - **Sarah Gaboda**

Properties Assistants - **Leilane Bertunes,**

**Trevor Schmitt-Ernst, Benjamin Miller,**

**Abby-Noells Potter and Sophie Smrka**

## SOUND

Sound and Video Manager - **Chris Walters**

Sound Assistants - **Chance Beck, Allison Bucher,**

**Elisabeth Dupuy and Amoirie Perteet**

# Fueling the Arts and the Audience



Pilot Company is proud to support the Clarence Brown Theatre's mission to enrich local culture and guide the next generation of artists.

**pilot**  
COMPANY®

[pilotcompany.com](https://pilotcompany.com)   

© 2024 Pilot Travel Centers LLC

FROM  
**CHOPIN**  
TO  
**COLTRANE**  
TO  
**CITY HALL**

WUOT brings you the best of classical, jazz, and local news along with your favorite NPR programs. Tune in today at 91.9 FM, stream online at [WUOT.org](http://WUOT.org), or download the WUOT mobile app.

WUOT 91.9  
fm  
[wuot.org](http://wuot.org)  [@wuotfm](https://twitter.com/wuotfm)

npr



## ROTARY INSPIRING THE WORLD

Come and visit a Rotary Club of Knoxville meeting. We meet every Tuesday at noon at the Crowne Plaza Hotel, where we hear great speakers and enjoy social networking and camaraderie. Founded in 1915, we are Knoxville's oldest and largest service club, with around 150 members and always looking for more. The club is apolitical and secular, welcoming members from all communities. Each year our club:

- Awards \$20,000 college scholarships
- Recognizes two Knox County teachers with \$500 awards and \$250 gift certificates
- Supports End Polio Now, Rotary International's signature project
- Sustains clean water projects in 115 villages in Thailand

Learn more at [www.knoxvillerotary.org](http://www.knoxvillerotary.org)

**UT** Federal  
Credit  
Union



For *All* Who Love Tennessee

20 Years of Live Music

**WDVX**  
89.9 fm

**BLUE PLATE SPECIAL**

IN DOWNTOWN KNOXVILLE

A Free  
Live Radio  
Show!



12 Noon  
Mon-Sat



KNOXVILLE  
TENNESSEE

Senior  
Financial Group  
*Doing Business Differently*

**BARLEY'S**

# INHERIT THE WIND

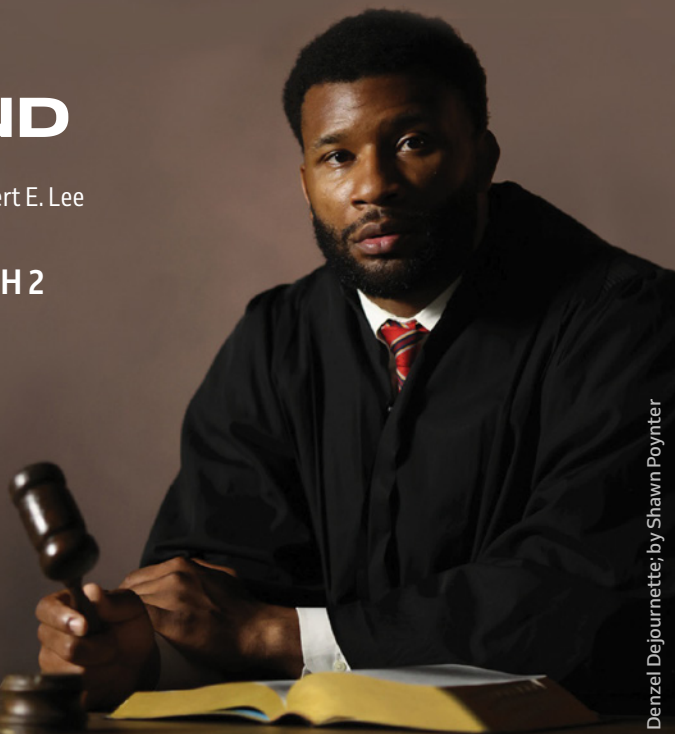
By Jerome Lawrence and Robert E. Lee

FEBRUARY 12 - MARCH 2



**CLARENCE  
BROWN  
THEATRE**

AT THE UNIVERSITY OF TENNESSEE



Denzel Dejournette; by Shawn Poynter



# THANK YOU

To Our Most Generous  
2024/2025 Season Sponsors



## ROCKIN'EARS FOR 42 YEARS!

WUTK offers an eclectic mix of music, including new releases, indie rock, alternative rock, classic alternatives, punk, reggae, hip hop, Americana, EDM, Jam Bands, local music, concert info, giveaways, and even sports, local talk & feature shows, and news.

**On the Air and Streaming 24.7.365**  
**WUTKRADIO.COM**

or listen on your free TuneIn app 



# SOCIETY

## Artists Circle

Pamela and James Given  
Townes Lavidge Osborn  
and Robert S. Marquis  
Hei Park  
Linda and Terry Tyler

## Producers Circle

Myrwood Besozzi  
Larry and Jeanie Brakebill  
Peter Campbell  
Bonnie Carroll  
Elizabeth Carroll  
Elizabeth Craig  
Nancy Duckles  
and Cameron Sears  
Jeffrey Eberting  
Vickie Ellis  
Susan Farris  
Howard Filston  
Jayne De Fiore  
Rosemary Gilliam  
Amy Morris Hess  
John and Susan Hoffman  
Julie Howard  
and Ted Flickinger  
Susan Kornegay  
Drs. Theresa Lee Love  
and Jacob F. Love

Erica Lyon and Dylan Jones  
Robert Madigan  
Maureen Dunn McBride and Neil  
G. McBride  
Martha McCampbell  
Arthur and Marsha Mitchell  
Margie Nichols and John Gill  
Linda Norris  
Dr. Lee Riedinger  
and Mary Zuhr  
Patricia Roux  
Susan Sgarlat and Charles Fels  
Sandra Stoutt  
Alice Torbett  
Lynn Venafrro  
Capt. Kenneth Stark  
and Nancy Voith  
Donna Wertz  
Wendy Wortham

## Directors Circle

Sara Phillips  
Donna Riggs  
Jeffrey Smith  
John and Delores Sorey

## Rising Star

Misty Anderson  
Julia Bentley

John Bushore  
John Butler  
Leann Dickson  
Steve Drevik  
Stanton Garner  
Lauren Herbstritt  
Jeffrey Kovac  
Samantha Murphy  
Dr. Howard C. Filston and Sandra  
K. Stoutt  
Alexander Waters

## Leading Player

Sandra and Jay Aldrich  
Andrea Anderson  
Amy Caponetti  
Lauren Chiles  
Brooks and Karen Clark  
Joan Clevenger  
Michael Combs  
Danielle Ely and Matt Tully  
Moiria Ely  
Tim Ezzell  
Tara Halstead  
Dennis Hayward  
Julie Lohnes  
Calvin and Rebecca MacLean  
William Morrow  
John North  
Bonnie Ownley  
Dave Snider  
Robert Trigiano  
Jessica Tucker  
Georgiana Vines

---

# CBT THANK YOU

Every gift, big or small, makes an impact on our students, our faculty and staff, the Clarence Brown Theatre, and the arts in this community. No matter the fund, we wanted to say thank you to our supporters. Contributions listed below are through July 2024. For corrections to your acknowledgement name, please contact Shelly Payne at [shellypayne@utk.edu](mailto:shellypayne@utk.edu)

Jay and Sandra Aldrich  
Ronald Alexander  
David Alley  
Robert Alley  
Virginia St. Ana  
Andrea Anderson  
Misty Anderson

Lucia Ashworth  
T John Aushore  
Jamie Ayres  
Callie Bacon  
Leslie Badaines  
Jennifer Banner  
Anne Becker

Dr. John M.  
and Connie L. Begovich  
John Begovich  
Phyllis Belanger  
Julia Bentley  
Myrwood Besozzi  
Larry Bounds



# CBT THANK YOU

Randy Boyd  
Charles Brakebill  
Larry and Jeanie Brakebill  
David Brandes  
William Brewer II  
Jill Brock  
Kathleen Buckley  
John Bushore  
John Butler  
Kieran Byrd  
Peter Campbell  
Amy Caponetti  
Cynthia Moxley  
and Alan Carmichael  
Fay Carr  
Fany Carrera  
Bonnie Carroll  
Elizabeth Carroll  
Tom Cervone  
and Susan Creswell  
Jeffrey Cheek  
Weiwei Chen  
Lauren Chiles  
Brooks and Karen Clark  
Joan Clevenger  
Michael Combs  
Robin Conklin  
Marcia Cook  
James Cooper  
Elizabeth Craig  
Betsey Creekmore  
Katharine Pearson Criss  
Drs. Joseph C.  
and Jayne C. De Fiore  
Nancy DeCosta  
Diana Dickey  
Leann Dickson  
Steve Drevik  
Nancy Duckles  
and Cameron Sears  
Jan Duncan  
Donald Dunning Jr.  
Jeffrey Eberting  
Vickie Ellis  
Danielle Ely and Matt Tully  
Moiria Ely

Tim Ezzell  
Susan Farris  
Norman Featherston  
Joseph Ferguson  
Howard Filston  
Craig Fitzhugh  
Christy and Jason Fogarty  
East Tennessee Foundation  
Scripps Howard Foundation  
William France  
Debra Freeberg  
Kevin Galbreath  
Brian Gard  
Stanton Garner  
Margie Nichols and John Gill  
Rosemary Gilliam  
Pamela and James Given  
Chad Goldman  
Tara and Scott Halstead  
Katie Harrill  
Haslam Family Foundation Inc.  
Dennis Hayward  
Charlotte Headrick  
Joan Heminway  
Lauren Herbstritt  
William Herriage  
Amy Morris Hess  
John and Susan Hoffman  
Charlotte Holland  
Mary Hollenbeck  
Thomas Hollenbeck  
Sandra Holub  
Julie Howard and Ted Flickinger  
Leigh Hruby  
Lori Ingle  
Lyle Irish  
Elisabeth Jackson  
Larsen Jay  
Carol Jenkins  
Gretchen Burleigh-Johnson  
Arthur Jones  
Debbie Jones  
Lucy Keh  
Presley Keith  
Philip King III  
Andrea Kline

Mary Kois  
Susan Kornegay  
Jeffrey Kovac  
Robert Lederer  
Drs. Theresa Lee Love and  
Jacob F. Love  
Julie Lohnes  
Mary Long  
Erica Lyon and Dylan Jones  
Calvin and Rebecca MacLean  
Robert Madigan  
Charles Maland  
Stephen Mangum  
Francine Marasco  
Julia and Ken Martin  
Stephen Martin  
Maureen Dunn McBride  
and Neil G. McBride  
Rose Mary McCall  
Martha McCampbell  
Peter Mckee  
Susan McMillan  
Amanda Middleton  
Gary Miller  
Arthur and Marsha Mitchell  
Pedro Tomas-Mitchell  
Pedro Tomás and Roger Roark  
Mark Mitchum  
Carl Moore Jr.  
Jane Moore  
William Morrow  
Robert Moss  
Samantha Murphy  
Mildred Myers  
James Newburn  
Margie Nichols and John Gill  
Linda Norris  
Margaret Norris  
Carman North  
John North  
Estate of Jean C. Ogle  
Terry Olberding  
Townes Lavidge Osborn  
and Robert S. Marquis  
Bonnie Ownley  
Hei Park

# CBT THANK YOU

Kendall Parrott  
Joseph and Shelly Payne  
Meredith Peccolo  
Brian Pendleton  
G. Phillips  
Linda Phillips  
Sara Phillips  
Christopher Pickart  
David Pollard Jr.  
Arnold Pomerance  
Amy Pope  
Vladimir Protopopescu  
Sharon Pryse  
David Ratliff  
Charles Reiss  
Dr. Lee Riedinger  
and Mary Zuhr  
Donna Riggs  
Mary Ritchie  
Lauren Roark  
and Spencer Christensen  
Deborah Rodday  
Philip Royer  
David Rutherford  
Gina Di Salvo  
Jane Sams  
Eric Schmidt  
Gerhardt Schneider  
Bryan Self  
Susan Sgarlat and Charles Fels  
Patricia Roux-Sharp  
Andrew Sheehy  
Hana and Steve Sherman  
Keith Shope Sr.  
Shubert Foundation, Inc.  
Jan Simek  
Melinda Simmons  
John Sipes  
Kerstin Kilgo Sisco  
Stephanie Slater  
Shane Sloan  
Jeffrey Smith  
Dave Snider  
John and Delores Sorey  
Julie Sosebee  
Mark Spurlock

Morgan Stanley  
Nancy Stewart  
Dr. Howard C. Filston  
and Sandra K. Stoutt  
Elizabeth and Wes Stowers  
Stowers Machinery  
Foundation, Inc.  
Julie Anna Summers  
Brooke Swart  
Tyler Tallent  
Lisa Thomas  
Devon Thompson  
Sam Tipton Jr.  
Alice Torbett  
Robert Trigiano  
Jessica Tucker  
Linda and Terry Tyler  
Karen Valero  
Lynn Venafro  
Janna de Vente  
Georgiana Vines  
Capt. Kenneth Stark  
and Nancy Voith  
Stephanie Wall  
Christopher Wallace  
William Walter  
Sharon Ward  
Alexander Waters  
Brent Waugh  
Donna Wertz  
Donald White  
Amber Williams  
Tammie Williams  
Timothy Williams  
Rhonda Wilson  
Travis Wilson  
Dr. Dale C. and  
Wendy Wortham  
Kenton Yeager  
Cheryl Zamora

## **MARIAN BROWN'S CIRCLE**

Pandy Anderson  
David Andrews  
Jeannette Brown

Amber Bilderback  
Dennis Bussell  
Christopher Clark  
Greg Congleton  
Mitzi Congleton  
Steve Drevik  
Vickie Ellis  
Deborah Emery  
Mardel Fehrenbach  
Jim Given  
Pamela Given  
Gretchen Hartmann  
John Hoffman  
Julie Howard  
Virginia Kerwin  
Jerry Kornegay  
Susan Kornegay  
Sharon Kreis  
Steve Krempasky  
Robert Lacy  
Stephen LaVie  
Erica Lyon  
Francine Marasco  
Elizabeth Matlock  
Vanessa McAfee  
Maureen McBride  
Sheena McCall  
Martha McCampbell  
Margie Nichols  
Linda Norris  
Hei Park  
Sara Phillips  
Elizabeth Pollock  
Donna Riggs  
Carol Shaffer  
Helen Sirett  
Helen Tews  
Nadine Trainer  
Jessica Tucker  
Linda Tyler  
Terry Tyler  
Georgiana Vines  
Nancy Voith  
Donna Wertz

**CORPORATE, FOUNDATION  
AND GRANT SUPPORT**

Arts & Cultural Alliance  
City of Knoxville

The Department of  
the Treasury  
Mildred Haines and  
William Elijah Morris

Lecture Endowment Fund  
Knox County  
Knox County Tourism  
Consortium  
Merchant & Gould  
Pilot Company  
Rotary Club of Knoxville  
Tennessee Arts Commission  
The Roy Cockrum Foundation

The Shubert Foundation, Inc.  
UT Federal Credit Union  
UT Institute of  
American Civics

**CLARENCE BROWN THEATRE**  
AT THE UNIVERSITY OF TENNESSEE

**CBT ADVISORY BOARD - 2024/2025 OFFICERS AND MEMBERS**

- Alexander Waters** - *Chair*  
**Julie Howard** - *Immediate Past Chair*  
**Margie Nichols** - *At-Large*  
**Will Brewer** - *At-Large*

Jennifer Banner  
Larry Brakebill  
Will Brewer  
Amy Caponetti  
Lisa Carroll  
Jeff Cheek  
Brooks Clark  
Katharine Pearson Criss  
Leann Dickson  
LeAnne Dougherty  
Danielle Ely  
Pamela Given  
Amy Morris Hess

Michael Higdon  
Julie Howard  
Delphia Howze  
Erica Lyon  
Maureen Dunn McBride  
Margie Nichols  
Linda Norris  
John North  
Sara Phillips  
Vladimir Protopopescu  
Lee Riedinger  
Tomi Robb  
CortneyJo Sandidge

Susan Sgarlat  
John Sorey  
Pedro Tomás  
Alice Torbett  
Robin Turner  
Terry Tyler  
Georgiana Vines  
Alexander Waters  
Donna Wertz  
Melanie Wood  
Wendy Wortham

**EMERITUS MEMBERS:**

Joe De Fiore  
Susan Farris  
Sheena McCall  
Townes Lavidge Osborn

**EX-OFFICIO MEMBERS:**

Kenneth Martin  
Tom Cervone  
Jessi Arnidis  
Jan Simek  
Stephanie Wall

# 2024/2025

## FOUNDATION & GRANT PROFILES



jackpot, the Foundation's mission is to award grants to support world-class performing arts projects in not-for-profit professional theatres throughout America. Since 2014, 39 flagship American theaters and performing arts organizations have received major grants from the Foundation.

Founded in 2014 by Roy Cockrum and Benita Hofstetter Koman with winnings from Mr. Cockrum's Powerball lottery



and J.J. Shubert, in memory of their brother Sam and is dedicated to sustaining and advancing the live performing arts in the United States, with a particular emphasis on theatre and a secondary focus on dance. They are the nation's largest funder dedicated to unrestricted funding of not-for-profit theatres, dance companies, professional theatre training programs and related service agencies. The Shubert Foundation is especially interested in providing support to professional resident theatre and dance companies that develop and produce new American work.

**The Shubert Foundation, Inc.,** was established in 1945 by Lee



### **Knox County Tourism Consortium**

with 24 arts and culture organizations who deliver more than 4,000 tourism geared events and activities. The visitors the consortium attracts to Knox County bring millions of dollars into the county as they patronize local restaurants, shops, vendors, and hotels. Pre-pandemic, the consortium attracted visitors from all fifty states and international visitors from more

The Clarence Brown Theatre is a proud member of the **Arts & Culture Alliance's Knox County Tourism Consortium**, joining



than 80 countries to Knox County, bringing nearly \$18 million into the county with them. Visitors from surrounding East Tennessee counties have added more than \$16 million. The consortium supports \$12 million in jobs and pays \$18 million more to local vendors.

**Knox County** is a county in the U.S. state of Tennessee. As of the 2010 census, the population is 432,226. Its county seat and largest city is Knoxville. The county is at the geographical center of the Great Valley of East Tennessee. Near the heart of the county is the origin of the Tennessee River at the union of the Holston and French Broad Rivers. Knox County was created on June 11, 1792 by Governor William Blount from parts of Greene and Hawkins counties, and has the distinction of being one of only eight counties created during territorial administration. It is one of nine United States counties named for American Revolutionary War general and first United States Secretary of War Henry Knox. Parts of Knox County later became Blount (1795), Anderson (1801), Roane (1801), and Union (1850) counties.



**The Department of the Treasury** is the executive agency responsible for promoting economic prosperity and ensuring the financial

security of the United States. The Department is responsible for a wide range of activities such as advising the President on economic and financial issues, encouraging sustainable economic growth, and fostering improved governance in financial institutions. The Department of the Treasury operates and maintains systems that are critical to the nation's financial infrastructure, such as the production of coin and currency, the disbursement of payments to the American public, revenue collection, and the borrowing of funds necessary to run the federal government. The Department works with other federal agencies, foreign governments, and international financial institutions to encourage global economic growth, raise standards of living, and to the extent possible, predict and prevent

economic and financial crises. The Treasury Department also performs a critical and far-reaching role in enhancing national security by implementing economic sanctions against foreign threats to the U.S., identifying and targeting the financial support networks of national security threats, and improving the safeguards of our financial systems.



**Pilot Company's** mission is to make life better for America's drivers. With more

than 650 locations nationwide, Pilot Company is the largest retail operator of travel centers in North America. At Pilot Company we believe it is essential to give back to the community. Our founder, Mr. James A. Haslam II, established our philanthropic spirit when he started the company in 1958. Our employees all take part in giving their time, talents and efforts to various organizations throughout the year. Together we work to make our communities better places to work, play and live. Visit [www.pilotflyingj.com](http://www.pilotflyingj.com) for more information.



**City of Knoxville -** Knoxville's roots run deep and strong. The city has served as the hub of the region since its founding in 1791. The

best of its Appalachian heritage remains today — a strong work ethic, a family-centered community, and an intense respect for the natural beauty that envelopes the region. The metropolitan Knoxville area was ranked the "best place to live in the United States and Canada" among cities with a population of fewer than 1 million. The ranking came from the Millennium edition of Places Rated Almanac. The results confirmed what most in this area have known for a long time - Knoxville is one of the best cities in the country!



The **Tennessee Arts Commission**, was created in 1967 by the Tennessee General Assembly

with the special mandate to stimulate and encourage the presentation of the visual, literary, music and performing arts and to encourage public interest in the cultural heritage of Tennessee. TN Arts

Commission Governing Policies can be found here. The mission of the Tennessee Arts Commission is to cultivate the arts for the benefit of all Tennesseans and their communities. Our vision is a Tennessee where the arts inspire, connect and enhance everyday lives. The Commission is supported by in part by the National Endowment for the Arts.

**The Mildred Haines and William Elijah Morris Lecture Endowment** supports campus visits of lecturers and scholars in all disciplines in the College of Arts and Sciences. The dean of the college solicits proposals from departments and academic programs for the use of the funds, appoints an advisory committee to review and make recommendations regarding the proposals, and makes awards to the successful proposals. The advisory committee has a representative from the humanities, the social sciences, the natural sciences and the arts faculties of the college. The committee selects a chairperson from among its members. Committee members serve two-year terms and may be reappointed at the discretion of the dean.



**Institute of American Civics** - In a time of proliferating distrust and political polarization, the Institute of American Civics housed in The Baker School of Public Policy and Public

Affairs presents a remarkable opportunity to address these challenges, beginning with undergraduates on the University of Tennessee, Knoxville, campus and then extending more broadly to the entire UT system and to the State of Tennessee as a whole. The institute is committed to improving civic knowledge and civil discourse through courses, student programs, public events, and K-12 outreach. With a strong bipartisan backing, the 112th Tennessee General Assembly created the Institute of American Civics to strengthen civic education and participation while reviving thoughtfulness, civility, and respect for opposing viewpoints in national discourse.

# 10 WEATHER IMPACT ALERT

TRACK THE **IMPACT**. BE **PREPARED**. STAY **SAFE**.

## STEP 1

DOWNLOAD THE  
10NEWS APP

## STEP 2

ASSEMBLE A  
WEATHER IMPACT KIT

## STEP 3

HAVE AN  
EMERGENCY PLAN

DOWNLOAD THE  
10NEWS APP NOW



GET **WEATHER IMPACT DAY**  
**ALERTS**, FORECASTS, AND UPDATES.

Stream newscasts on +app on **Roku**   Watch on **Apple TV**



# 24.25 SEASON



## KNOXVILLE

Book by Frank Galati;  
Music by Stephen Flaherty;  
Lyrics by Lynn Ahrens  
Directed and Choreographed  
by Josh Rhodes  
Based on the Asolo Rep  
production directed  
by Frank Galati  
Adapted from  
*A Death in the Family*  
by James Agee  
and *All the Way Home*  
by Tad Mosel

SEPT. 4-22 | CBT

## CRY IT OUT

By Molly Smith Metzler  
SEPT. 18 – OCT. 5  
The Lab Theatre

## HOW TO DEFEND YOURSELF

By Liliana Padilla  
OCT. 23 – NOV. 10  
The Lab Theatre

## A CHRISTMAS CAROL

By Charles Dickens  
Adapted by Edward Morgan  
and Joseph Hanreddy;  
Music by John Tanner  
NOV. 21 – DEC. 21 | CBT

## INHERIT THE WIND

By Jerome Lawrence  
and Robert E. Lee  
FEB. 12 – MAR. 2 | CBT

## FAILURE: A LOVE STORY

By Philip Dawkins  
MAR. 12 – APR. 6  
The Lab Theatre

## THE PLAY THAT GOES WRONG

By Jonathan Sayer,  
Henry Shields, and  
Henry Lewis  
APRIL 16 – MAY 4 | CBT

CLARENCE  
BROWN  
THEATRE  
AT THE UNIVERSITY OF TENNESSEE

(865) 974-5161  
clarencebrowntheatre.com

