



THE *Jenny Boyd*
CAROUSEL THEATRE

SOUND & MEDIA
EQUIPMENT REGISTRY



DEPARTMENT OF THEATRE

TABLE OF CONTENTS

Sound & Media Equipment

Page	Item	Total Cost
01	MAIN THEATRE SPACE PRIMARY SPEAKERS	\$200,000.00
02	EXTERNAL ARCHITECTURE PROJECTION MAPPING	\$75,000.00
03	EXTERNAL ARCHITECTURE LED VIDEO WALL	\$64,000.00
05	THEATRICAL EPSON PROJECTOR	\$54,000.00
6-7	PRODUCTION COMMUNICATIONS CLEAR-COM/FREESPEAK	\$50,000.00
08	MEDIA SERVER	\$35,000.00
09	THEATRICAL LED VIDEO WALL	\$34,000.00
10	EXTERNAL ARCHITECTURE LED VIDEO WALL	\$34,000.00
11	MIXING CONSOLE	\$30,000.00
12	THEATRICAL EPSON PROJECTOR	\$28,000.00
13	DANTE STAGE BOX YAMAHA RIO1608-D2	\$16,500.00
14	THEATRICAL PROJECTOR LENS ULTRA SHORT THROW	\$16,000.00
15	SOFTWARE PACKAGE	\$15,000.00
16	THEATRICAL PROJECTOR LENS ULTRA SHORT THROW	\$15,000.00
17	LOBBY LED VIDEO WALL	\$12,000.00
18	DANTE STAGE BOX YAMAHA RIO3224-D2	\$12,000.00
19	CHANNEL OUTPUT RACK YAMAHA Ro8-D	\$8,000.00
20	EXTERNAL PROJECTOR HOUSING & CABLING	\$4,000.00
21	THEATRICAL PROJECTOR LENS SHORT THROW	\$3,500.00
22	EXTERNAL PROJECTION LONG THROW LENS	\$3,500.00
23	THEATRICAL ZOOM LENS MIDDLE THROW	\$3,000.00
24	THEATRICAL PROJECTOR LENS MIDDLE THROW	\$2,000.00
25	THEATRICAL PROJECTOR MOUNTS	\$2,000.00
26	ETHERNET SWITCHES CISCO SG350-28MP	\$1,000.00
27	THEATRICAL PROJECTOR MOUNTS	\$1,000.00
28	ETHERNET SWITCHES CISCO SG350-10P	\$600.00
29	EXTERNAL PROJECTION MOUNT	\$500.00
	Grand Total:	\$719,600.00

MAIN THEATRE SPACE

PRIMARY SPEAKERS \$200,000.00

Meyer Sound



Meyer Ultra-X22 Wide Coverage Loudspeakers (need 12)

Meyer Ultra-X20 (need 12)

Meyer Amie Precision Studio Monitor

Meyer MM4-XP Loudspeaker (need 8)

Meyer UPJ-1P Compact VariO Loudspeaker

Active Subwoofers (need 3)

Galaxy 816 Digital Processor (need 2)

Various Cables & Mounts (multiple)

Installation costs not included.

EXTERNAL ARCHITECTURE

PROJECTION Mapping \$75,000.00

Pro L20002UNL WUXGA 3LCD Laser Projector Without Lens



**Pro L20002UNL WUXGA 3LCD
Laser Projector Without Lens**

Premium large-venue WUXGA laser projector with 20,000 lumens.

The Pro L20002UNL combines a laser light source and 3-chip, 3LCD technology for powerful, lifelike images, delivering outstanding brightness in a remarkably compact form factor. A premium large-venue projector, it features Full HD WUXGA resolution and 20,000 lumens of color/white brightness¹ for ultra bright, vivid color. Its laser light engine and electrostatic air filter provide virtually maintenance-free operation for up to 20,000 hours². With two interface slots designed to accommodate a wide range of inputs, the Pro L20002UNL provides the ultimate in connectivity. And, it supports optional lenses (sold separately), including a zero-offset ultra short-throw lens. Projector also available in black.

EXTERNAL ARCHITECTURE

LED VIDEO WALL

\$64,000.00

NovaStar 31' x 16' Outdoor Configurable Wall (50 Panels)



**NovaStar P5mm 31.5' x 15.75'
Outdoor LED Video Wall Screen
Turn-Key**

Big LED Screen Display Panels 31.5'x15.75' P5mm Outdoor

NovaStar P5 Outdoor Panels are the great solutions for LED video wall for churches and house of worship. Our panels provide the optimal mix of brightness, fine pixel pitch, color uniformity, and reliability. These LED displays are great for indoor and outdoor use, versatility is the key to success. LED Nation has been manufacturing Video Wall Panels for many years, we count with the experience and knowledge to create any project you have in mind.



THEATRICAL EPSON PROJECTOR

\$54,000.00

Pro L1750UNL Laser Projector

\$27,000 each – Need 2



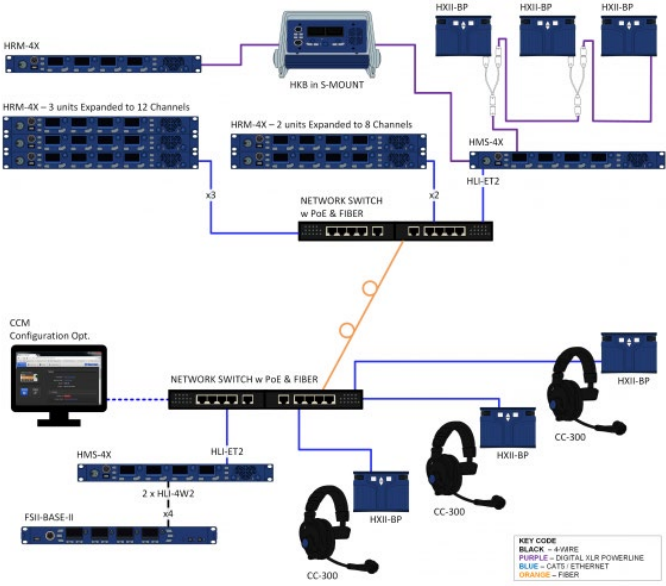
**Pro L1750UNL WUXGA 3LCD
Laser Projector with 4K
Enhancement Without Lens**

The Pro L1750UNL combines a laser light source, inorganic components and 3LCD technology for powerful, uncompromising images. This premium large-venue projector also features native WUXGA performance with Epson® 4K Enhancement Technology¹. Delivering 15,000 lumens of color/white brightness² from a standard 120 V power source, the compact Pro L1750UNL offers ultra bright, vivid color, while its laser light source engine and electrostatic air filter provide virtually maintenance-free operation for up to 20,000 hours³. This sleek, white projector's includes built-in Edge Blending, and integration capabilities like 3G-SDI and HDBaseT™, plus nine optional powered lenses (sold separately).

Some lenses will not support the maximum brightness level of this projector.

PRODUCTION COMMUNICATIONS \$50,000.00

Clear-Com HelixNet Digital Network Partyline System (1 of 2)



Clear-Com HelixNet Digital Network Partyline System

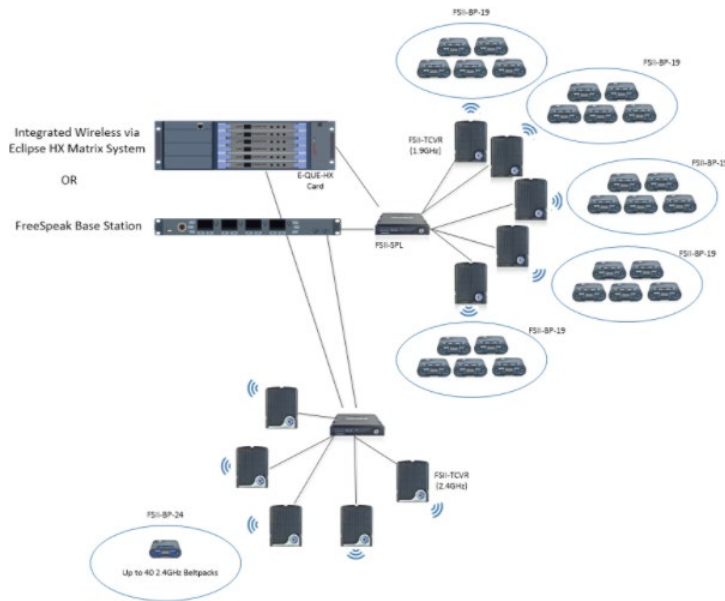
WIRED COMMUNICATIONS

Digital Network Partyline is a wired intercom platform for full-duplex dynamic group communication, with I.V.Core technology at the core and offers all the benefits of digital audio and network-friendly characteristics.

HelixNet Digital Network Partyline System uniquely delivers all features and functions of industry-standard partyline systems with the addition of digital audio and data transport over any IP network or, alternatively, over any standard shielded twisted-pair microphone cable. Up to 24 channels of audio are provided to any endpoint powered either locally, via Powerline, or Power-over-Ethernet (PoE).

PRODUCTION COMMUNICATIONS

FreeSpeak II Digital Wireless Intercom System (2 of 2)



FreeSpeak II Digital Wireless Intercom System

DIGITAL WIRELESS INTERCOM SYSTEM

In a single-frequency band configuration, the FreeSpeak II base station can support as few as one or as many as 10 Transceivers for providing wireless coverage to a maximum of 25 full-duplex wireless beltpacks in either 1.9GHz or 2.4GHz frequency band. Add the fiber-based Splitter box to extend the transceiver position to as far as 60,000 feet away from the base station.

MEDIA SERVER

\$35,000.00

Watchout, Disguise, 7th Sense, or Ai \$35,000 each – Need 1



7th Sense Infinity - Full Output Servers with Cabling

Many applications require a high quality source of imagery which is matched to the particular display system. From projected 3D cinema, fulldome, and digital signage installations to visitor attractions, Delta Media Server is that source; a fully uncompressed video server, capable of immense flexibility in matching any display configuration.

Delta Media Server scales all the way from small form factor single HD playback to 2,3,4,6,8, 12 and 16-output fully uncompressed video servers with frame-accurate editing, live video input, 3D stereo capability, UltraHD, 4K60 and 4K 120 fps over DVI, 4K 60 fps over SDI plus 8K 60 fps and 16K 60 fps capability and the fundamental flexibility of real-time composition with built-in effects, and real-time warp and blend.

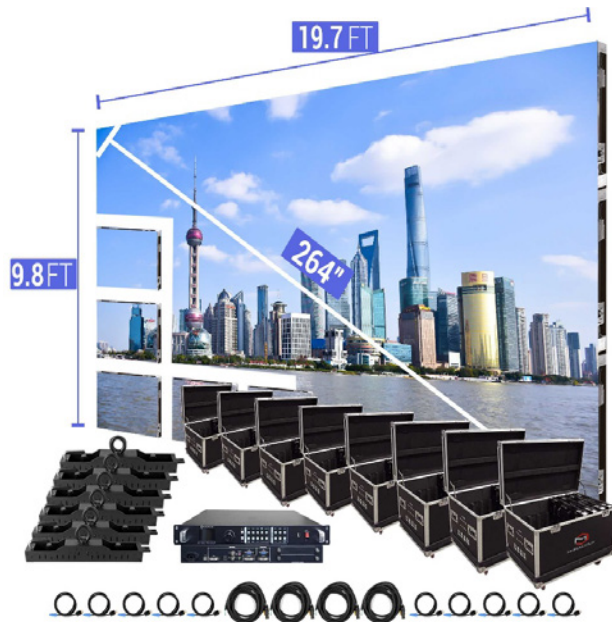
True Uncompressed Serving, Real-time Show Control, Beyond HD resolution, Multiple Channel Outputs, Match Any Display, Ultimate Flexibility, Customization

This means you'll always have the performance and features you do need, and you won't pay for the things you don't.

THEATRICAL LED VIDEO WALL

\$34,000.00

NovaStar 20' x 10' Indoor Configurable Wall (72 Panels)



**LED Video Wall Screen 19.7' x 9.8'
P2.97mm NovaStar Indoor
Turn-Key**

Big LED Screen Display Panels 19.7' x 9.8' P2.97mm

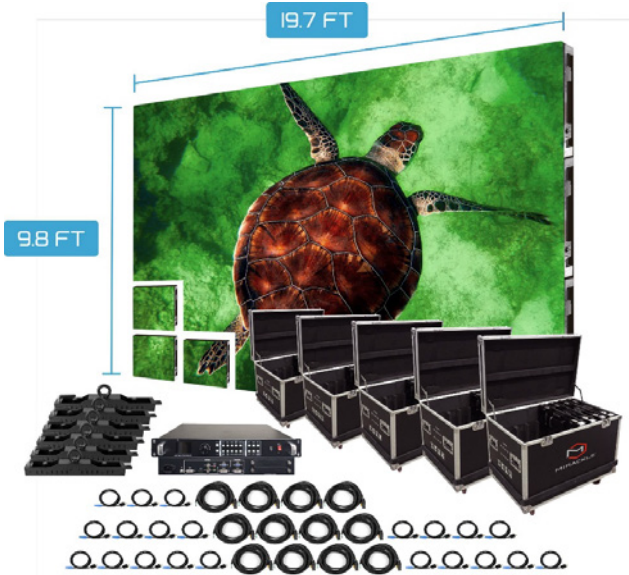
NovaStar P2.97 Indoor Panels are the great solution for LED video wall for churches, house of worship, virtual production and rental companies. Our panels provide the optimal mix of brightness, fine pixel pitch, color uniformity, and reliability. These LED displays are great for indoor use, versatility is the key to success. LED Nation has been manufacturing Video Wall Panels for many years, we count with the experience and knowledge to create any project you have in mind.

EXTERNAL ARCHITECTURE

LED VIDEO WALL

\$34,000.00

NovaStar 20' x 10' Outdoor Configurable Wall (72 Panels)



**NovaStar P3.91mm 19.6' x 9.8'
Outdoor LED Video Wall Screen
Turn-Key**

Big LED Screen Display Panels 19.6' x 9.8' P3.91mm Outdoor

NovaStar P3.91 Outdoor Panels are the best solutions for LED video wall rental companies, churches, house of worship and more. Our panels provide the optimal mix of brightness, fine pixel pitch, color uniformity, and reliability. These LED displays are great for indoor and outdoor use, versatility is the key to success. LED Nation has been manufacturing Video Wall Panels for many years, we count with the experience and knowledge to create any project you have in mind.

MIXING CONSOLE

\$30,000.00

Yamaha CL5 Digital Mixing Console



**Yamaha CL5 Digital
Mixing Console**

With a three-section fader layout for efficient hands-on control, the CL5 is the ideal choice for a diverse spectrum of live sound systems.

- Input channels: 72 mono, 8 stereo.
- Fader configuration: 16-fader left section, 8-fader central logic section, 8-fader right section, 2-fader master section.
- Stainless steel stay for iPad support.
- Built-in meter bridge.

Flexible Use THEATRICAL

EPSON PROJECTOR

\$28,000.00

Pro L1070WNL Laser Projector

\$7,000 each – Need 4



**Pro L1070WNL WXGA 3LCD
Laser Projector**

The powerful Pro L1070WNL, part of Epson's most compact interchangeable-lens laser projector series, offers 3-chip 3LCD technology and native WXGA resolution for widescreen images, all in a sleek white casing. Delivering extraordinary color brightness, Epson® 3LCD projectors ensure brilliant images. Providing 7,000 lumens of color brightness and 7,000 lumens of white brightness¹, the L1070W's laser light source and air filter offer virtually maintenance-free operation up to 20,000 hours². With a high contrast ratio and BT.709 color space, it produces sharp, true-to-life images. And, it offers 11 interchangeable lens options (lens not included).

Some lenses will not support the maximum brightness level of this projector.

DANTE STAGE BOX

\$16,500.00

Yamaha Rio1608-D2 Dante Stage Box \$5,500 Each – Need 3



Yamaha Rio1608-D2 Dante Stage Box

The Rio1608-D2 is a high-performance I/O unit for Yamaha's CL, QL, and RIVAGE PM series consoles. This digital stagebox is loaded with 16 great-sounding mic preamps that achieve the transparent, natural quality Yamaha is known for. The Rio1608-D2 connects directly to a Dante digital audio network, giving you flexible system configuration at up to 96kHz. Enjoy peace of mind, thanks to dual redundant power supplies. You can also daisy-chain connections. Beyond that, you'll benefit from local control of gain and other parameters. The live sound pros at Sweetwater appreciate how the Rio1608-D2's character display offers easy visual confirmation of your settings.

Flexible Use THEATRICAL PROJECTOR LENS

\$16,000.00

Ultra Short-Throw Zoom Lens

\$8,000 each - Need 2



ELPLX01 Ultra Short-Throw Zoom Lens

Ultra short-throw lens designed for select Epson® projectors.

Project supersized images using the ELPLX01 ultra short-throw lens with select Epson Pro L and Pro G Series projectors¹, up to 8,000 lumens. Featuring a 0.35 throw ratio and zero offset, this versatile lens is the ideal solution for installation in narrow spaces and rear-projection applications. Plus, its wide lens shift range offers even more flexibility when needed.

SOFTWARE PACKAGE \$15,000.00

Watchout, Disguise, 7th Sense, or Ai

Need 1



Software Package with Standard Computers

WATCHOUT multi-display software is your fast track to creating spectacular shows. Use WATCHOUT to compose and manage all the different media elements in your show – video, still images, animations, graphics, live feeds, sound – and then play it back on multiple displays. Perfectly synchronized, high resolution and right-on-cue.

WATCHOUT is easily integrated and controls external units or devices. It has no limitations on displays, channels or resolutions. With over 15 years of unrivalled performance and reliability, WATCHOUT is the choice of professional show creators worldwide.

WATCHOUT is used in live events, 3D mapping, broadcast, digital signage, museums, planetariums, show rooms, visitor attractions and experience centers. In other words – virtually any market or application where you want multiple display devices and maximum impact.

THEATRICAL PROJECTOR LENS

\$15,000.00

Ultra Short Throw Lens

\$15,000 each - Need 1



ELPLX02W Ultra Short Throw Lens

White ultra short-throw lens designed for select Epson projectors.

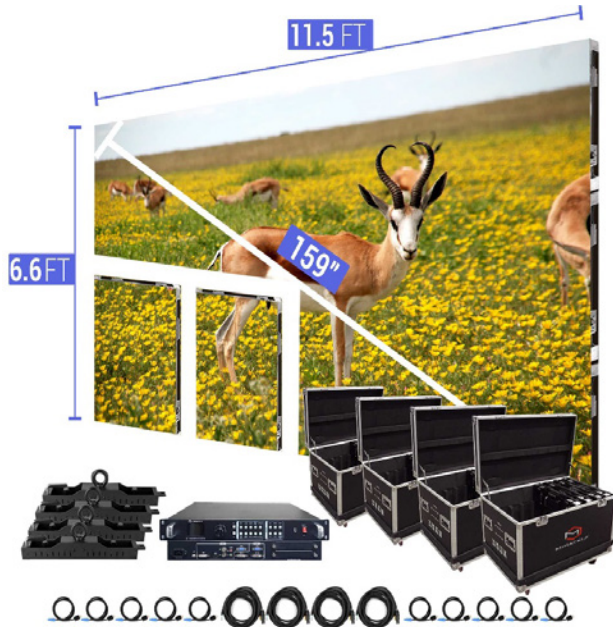
Project supersized images using the ELPLX02W ultra short-throw lens with select Epson Pro L Series projectors¹, 9,000 lumens or higher. Featuring a 0.35 throw ratio and zero offset, this versatile lens is the ideal solution for installation in narrow spaces and rear-projection applications. Plus, its wide lens shift range offers even more flexibility when needed.

LOBBY

LED VIDEO WALL

\$12,000.00

NovaStar 12' x 6' Indoor Configurable Wall (14 Panels or LED Posters)



**LED Video Wall Screen 11.5' x 6.6'
P3.91mm Double NovaStar Indoor
Turn-Key**

Big LED Screen Display Panels 11.5' x 6.6' P3.91mm 500x1000mm

NovaStar P3.91 Indoor Panels are the great solution for LED video wall for churches, house of worship, virtual production and rental companies. Our panels provide the optimal mix of brightness, fine pixel pitch, color uniformity, and reliability. These LED displays are great for indoor use, versatility is the key to success. LED Nation has been manufacturing Video Wall Panels for many years, we count with the experience and knowledge to create any project you have in mind.

DANTE STAGE BOX

\$12,000.00

Yamaha Rio3224-D2 Dante Stage Box



Yamaha Rio3224-D2 Dante Stage Box

The Rio3224-D2 is a high-performance I/O unit for Yamaha's CL, QL, and RIVAGE PM series consoles. This digital stagebox is loaded with 32 great-sounding mic preamps that achieve the transparent, natural quality Yamaha is known for. The Rio3224-D2 connects directly to a Dante digital audio network, giving you flexible system configuration at up to 96kHz. You also get four stereo AES outputs. Enjoy peace of mind, thanks to dual redundant power supplies. You can also daisy-chain connections. Beyond that, you'll benefit from local control of gain and other parameters. The live sound pros at Sweetwater appreciate how the Rio3224-D2's character display offers easy visual confirmation of your settings.

Channel Output Rack \$8,000.00

Yamaha Ro8-D, 8 Channel Output Rack \$2,000 Each Need 4

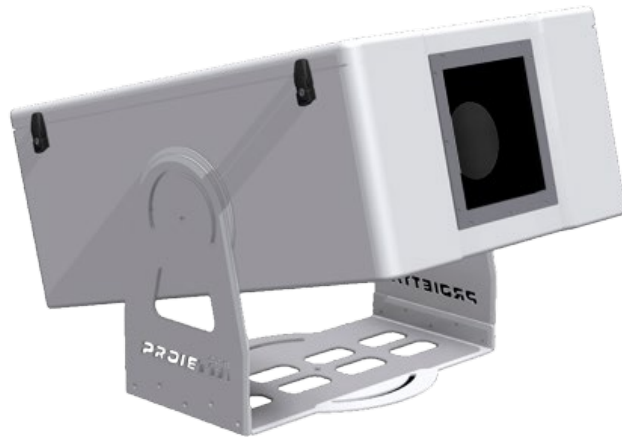


Yamaha R08-D, 8 Channel Output Rack

The Yamaha Ro8-D is an 8 channel rack mountable input rack with XLR connectors. Connects via Dante network connector protocol.

EXTERNAL PROJECTOR

Waterproof Housing **\$2,000.00**



EXTERNAL PROJECTOR

Cabling **\$2,000.00**

THEATRICAL PROJECTOR LENS

\$3,500.00

Short Throw Lens

\$3,500 each – Need 1



ELPLU04 Short Throw Lens

Ideal for projecting large, high-quality images in narrow spaces, this interchangeable zoom lens supports screen sizes up to 1000"

- Interchangeable lens — for Pro L projectors up to 20,000 lumens and Pro G7000 Series projectors
- Convenient short-throw design — ideal for projecting a large image in narrow spaces
- Wide lens shift — for added flexibility
- High-quality design — up to 1000" screen size support; 2.0 to 2.1 F-number; 14.8 mm to 17.7 mm focal length
- Zoom ratio — 1 to 1.2
- Weight — 6.8 lbs (3100 g)
- Up to 8,000-lumen projectors — WUXGA/WXGA 0.87 to 1.05 throw ratio; lens shift—vertical: -67 percent to +67 percent, horizontal: -30 percent to +30 percent
- 9,000- to 20,000-lumen projectors — WUXGA 0.64 to 0.77 throw ratio; lens shift—vertical: -60 percent to +60 percent horizontal: -18 percent to +18 percent
- Native 4K projector — 0.62 to 0.75 throw ratio; Vertical: -58% to +58% Horizontal: -16% to +16%

EXTERNAL PROJECTION

LONG THROW LENS

\$3,500.00



**ELPLL08 Long Throw Zoom Lens
(From CBT Roof)**

This long throw zoom lens is ideal for projecting large, high-quality images. Supports screen sizes up to 1000".

- Interchangeable lens — for Pro L projectors up to 20,000 lumens and Pro G7000 Series projectors
- Wide lens shift — for added flexibility
- High-quality design — up to 1000" screen size support; 1.8 to 2.5 F-number; 119 mm to 165.4 mm focal length
- Zoom ratio — 1 – 1.4
- Weight — 4.9 lbs (2200 g)
- Up to 8,000-lumen projectors — WUXGA/WXGA 7.21 to 10.11 throw ratio; lens shift—vertical: -67 percent to +67 percent, horizontal: -30 percent to +30 percent
- 9,000- to 20,000-lumen projectors — WUXGA 5.27 to 7.41 throw ratio; lens shift—vertical: -60 percent to +60 percent, horizontal: -18 percent to +18 percent
- Native 4K projector — 5.09 to 7.16 throw ratio; vertical: -58 percent to +58 percent, horizontal: -16 percent to +16 percent

THEATRICAL ZOOM LENS

\$3,000.00

Middle-Throw Zoom Lens

\$1,500 each – Need 2



ELPLM10 Middle-Throw Zoom Lens

This middle throw zoom lens is ideal for projecting large, high-quality images. Supports screen sizes from 50" to 1000".

- Interchangeable lens — for Pro L projectors up to 20,000 lumens and Pro G7000 Series projectors
- Wide lens shift — for added flexibility
- High-quality design — up to 1000" screen size support; 1.8 to 2.4 F-number; 55.4 mm to 83.3 mm focal length
- Zoom ratio — 1 – 1.5
- Weight — 4.9 lbs (2200 g)
- Up to 8,000-lumen projectors — WUXGA/WXGA 3.32 to 5.06 throw ratio; lens shift—vertical: -67 percent to +67 percent, horizontal: -30 percent to +30 percent
- 9,000- to 20,000-lumen projectors — WUXGA 2.42 to 3.71 throw ratio; lens shift—vertical: -60 percent to +60 percent horizontal: -18 percent to +18 percent
- Native 4K projector — 2.34 to 3.59 throw ratio; Vertical: -58 percent to +58 percent Horizontal: -16 percent to +16 percent

Flexible Use THEATRICAL

PROJECTOR LENS

\$2,000.00

Middle Throw Zoom Lens

\$500 each – Need 4



ELPLM10 Middle Throw Zoom Lens

This middle throw zoom lens is ideal for projecting large, high-quality images. Supports screen sizes from 50" to 1000".

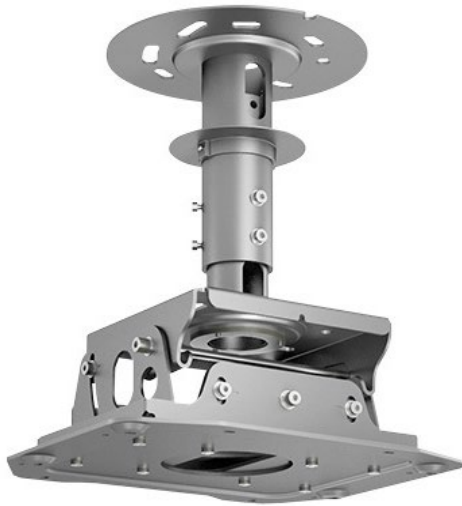
- Interchangeable lens — for Pro L projectors up to 20,000 lumens and Pro G7000 Series projectors
- Wide lens shift — for added flexibility
- High-quality design — up to 1000" screen size support; 1.8 to 2.4 F-number; 55.4 mm to 83.3 mm focal length
- Zoom ratio — 1 – 1.5
- Weight — 4.9 lbs (2200 g)
- Up to 8,000-lumen projectors — WUXGA/WXGA 3.32 to 5.06 throw ratio; lens shift—vertical: -67 percent to +67 percent, horizontal: -30 percent to +30 percent
- 9,000- to 20,000-lumen projectors — WUXGA 2.42 to 3.71 throw ratio; lens shift—vertical: -60 percent to +60 percent horizontal: -18 percent to +18 percent
- Native 4K projector — 2.34 to 3.59 throw ratio; Vertical: -58 percent to +58 percent Horizontal: -16 percent to +16 percent

Flexible Use THEATRICAL PROJECTOR MOUNT

\$2,000.00

High Ceiling Mount

\$500 each - Need 4



ELPMB48 High Ceiling Mount

Ceiling mount for high ceiling environment. Silver painted steel.

Dimensions: (H x W x D)

16.9" x 15.7" x 13

428x 400 x 330

Weight capacity:

165 lb / 75 kg

Color: Silver

ETHERNET SWITCHES \$1,000.00

Cisco SG350-28MP 350 PoE

\$500 Each - Need 2



Cisco SG350-28P 28-Port Gigabit PoE Managed Switch

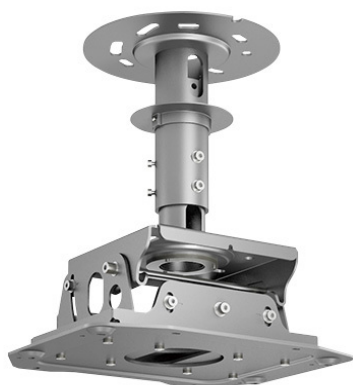
350 Series Switches are next-generation managed switches that offer excellent performance, rich features, and ease of use. With support for Layer 2 and 3 features, advanced security, routing, and energy-saving technology, they deliver a solid foundation for business applications today and in the future.

THEATRICAL PROJECTOR MOUNT

\$1,000.00

High Ceiling Mount

\$500 each – Need 2



ELPMB48 High Ceiling Mount

Ceiling mount for high ceiling environment. Silver painted steel.

Dimensions: (H x W x D)

16.9" x 15.7" x 13

428x 400 x 330

Weight capacity:

165 lb / 75 kg

Color: Silver

ETHERNET SWITCHES

\$600.00

Cisco SG350-10P 10-Port Gigabit PoE

\$300 Each – Need 2



Cisco SG350-10MP Managed Switch with 10 Gigabit Ethernet (GbE) Ports with 8 Gigabit Ethernet RJ45 Ports and 2 Gigabit Ethernet Combo SFP plus 124W PoE

350 Series Switches are next-generation managed switches that offer excellent performance, rich features, and ease of use. With support for Layer 2 and 3 features, advanced security, routing, and energy-saving technology, they deliver a solid foundation for business applications today and in the future.

EXTERNAL PROJECTION MOUNT

\$500.00

High Ceiling Mount



ELPMB48 High Ceiling Mount

Ceiling mount for high ceiling environment. Silver painted steel.

Dimensions: (H x W x D)

16.9" x 15.7" x 13

428 x 400 x 330

Weight capacity:

165 lb / 75 kg

Color: Silver

THE *Jenny Boyd*
CAROUSEL THEATRE

SOUND & MEDIA
EQUIPMENT REGISTRY



DEPARTMENT OF THEATRE