



# MEN ON BOATS

By JACLYN BACKHAUS



**MARCH 16 - APRIL 2**

LAB THEATRE

# Fueling the Arts and the Audience



Pilot Company is proud to support the Clarence Brown Theatre's mission to enrich local culture and guide the next generation of artists.

**PILOT**  
GIVES BACK

pilotcompany.com  

© 2022 Pilot Travel Centers LLC

CLARENCE BROWN THEATRE  
at the University of Tennessee

presents

# MEN ON BOATS

By JACLYN BACKHAUS

Directed by **Ashlee Latimer**

Scenic Designer  
**Sophie Smrcka**

Costume Designer  
**Kaelyn Williams**

Lighting Designer  
**Kaylin Gess**

Sound Designer  
**Allison Bucher**

Projections Designer  
**Lucas Swinehart**

Dramaturg  
**Cearan Jax Costello**

Voice/Text Coach  
**Carol Mayo Jenkins**

Stage Manager  
**Emily Adams**

Artistic Director/Department Head  
**Kenneth Martin**

Managing Director  
**Tom Cervone**

Production Manager  
**Susan L. McMillan**

Playwrights Horizons, Inc. and Clubbed Thumb produced

**MEN ON BOATS** in New York City, 2016

Initially developed and produced by Clubbed Thumb in 2015

*The video and/or audio recording of this performance by any means whatsoever is strictly prohibited.*

THE SHUBERT  
FOUNDATION INC.

Arts & Culture Alliance

Knox County  
Tourism Consortium



91.5 WUOT

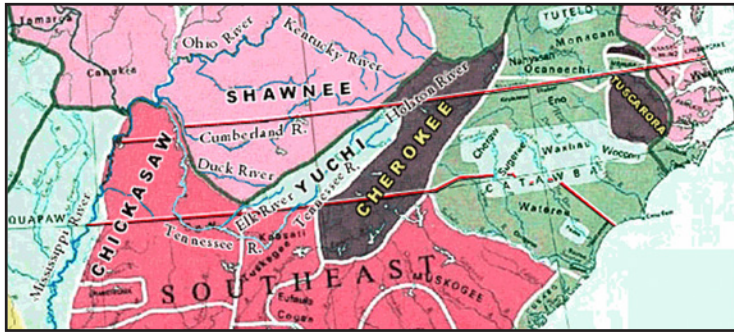
WUOT FM 90.5 THE ROCK  
VOLUNTEER  
RADIO

Members of the  
Marian Brown's Circle

*This project [is being][was] supported in whole or in part by federal award number 21.027 awarded to Knox County by the U.S. Department of the Treasury and the Arts & Culture Alliance.*

Cover Photo: Sarah Wahrmond, Jasmine R. Handy and Allison Hahn; by Elizabeth Aaron

## The Aboriginal People of Tennessee and Surrounding Areas



A Detail map (section) Taken From:  
Early American Indian Tribes, Cultural Areas, and Linguistic Stocks  
by  
William C. Sturtevant  
Smithsonian Institution  
1966

We acknowledge that we live, work, and create art on the traditional lands of the Tsalagi peoples (now the Eastern Band of Cherokee Indians, Cherokee Nation of Oklahoma, and the United Keetoowah Band of Cherokee Indians) and the Tsoyaha peoples (Yuchi and Muskogee Creek).

We are indebted to these indigenous peoples for their stewardship, both past and present, of this beautiful land.



We recognize and value diversity in all forms, including age, ethnicity, family structure, gender identity, national origin, race religion, spirituality, sexual orientation, socioeconomic background, and veteran status.

We believe inclusivity and diversity in our workplace should reflect the increasing multicultural and global society in which we live. We seek to foster excellent creative research, scholarship and professional practice by creating a welcoming environment, ethical recruitment practices, and a diverse student body who will have lives of awareness and understanding through their creative research, teaching, practicing and advocating for others in a diverse world.

Detailed information on our DEI initiatives can be found here:

<https://theatre.utk.edu/diversity-inclusion/>

# THE ACTORS

## Aboard the **Emma Dean**:

John Wesley Powell ..... **Jasmine R. Handy**  
William Dunn ..... **Allison Hahn**  
John Colton Sumner ..... **Sidney Scarlett**

## Aboard the **Kitty Clyde's Sister**:

Old Shady ..... **Madison M. Mansouri**  
Bradley ..... **Cameron Skillen**

## Aboard the **No-Name**:

O.G. Howland ..... **Sarah Wahrmond**  
Seneca Howland ..... **Abigail McCarter**  
Frank Goodman ..... **Catherine Blevins**

## Aboard the **Maid of the Canyon**:

Hall ..... **Ella Trisler**  
Hawkins ..... **Sarah Hazlehurst**

## The **Others on Land**:

Tsauwiat  
(an Ute Chief – doubles with O.G. Howland) ..... **Sarah Wahrmond**  
The Bishop  
(Tsauwiat's Wife – doubles with Seneca Howland) ..... **Abigail McCarter**  
Mr. Asa  
(a desert settler – doubles with Goodman) ..... **Catherine Blevins**

## UNDERSTUDIES

Powell, Old Shady, Hawkins, O.G.,  
Seneca, Tsauwiat, The Bishop ..... **Shahd Abbas**

Dunn, Sumner, Bradley, Hall,  
Goodman, and Mr. Asa ..... **Monica Gardiner**

## SETTING:

On boats in 1869. Traversing the Green & Colorado Rivers from Wyoming to a Big Canyon on the government's first Sanctioned Expedition.

This production is 100 minutes with no intermission.

After the show, please take a moment to fill out a brief 5-minute survey [tiny.utk.edu/cbtsurvey](https://tiny.utk.edu/cbtsurvey) about your experiences at **Men On Boats**. Your feedback helps us better know our audiences, offer more programming and increases funding opportunities for the CBT. **Thank you in advance!**



# ABOUT THE AUTHOR

# FROM THE DIRECTOR



photo by Marcus Middleton

## Jaclyn Backhaus

is a playwright and co-founder of Fresh Ground Pepper. Her play *MEN ON BOATS* was a NYT Critics' Pick (Off-Broadway, Clubbed Thumb and Playwrights Horizons) after starting in Clubbed Thumb's Summerworks, and was a Kilroys play in 2015. Other works include *PEOPLE DOING MATH LIVE!* (Under The Radar Festival's *INCOMING!* Series at The Public Theater), *THE INCREDIBLE FOX SISTERS* (Live Source), *YOU ON THE MOORS NOW* (Theater Reconstruction Ensemble, The Hypocrites Theater Chicago), *BULL'S HOLLOW* (Ars Nova), and the musical *FOLK WANDERING*. She has received commissions from Playwrights Horizons and Ars Nova and is the 2016 Tow

Foundation Playwright-in-Residence at Clubbed Thumb. Her work has been developed and showcased with the Bonnaroo Music and Arts Festival, Playwrights Horizons, The Public and Joe's Pub, The Ice Factory Festival, (not just) 3 New Plays, The Civilians R&D Group, SPACE on Ryder Farm, Ars Nova's ANT Fest, and The Falcons. BFA: NYU. She hails from Phoenix, Arizona.

**W**estward expansion began in 1803, after the Louisiana Purchase – when the United States bought 827,000 square miles of land west of the Mississippi River. The U.S. government hired Lewis and Clark to explore the West and find a route to the Pacific Ocean. William Clark made a map on this journey. Although it had many inaccuracies, it was the start of Western settlers learning more about the West. Many explorers came after Lewis and Clark and continued expanding the available information of the West and creating maps. However, much of this land remained uncharted and unexplored.

Before 1869, it was difficult to get funding for exploration. The majority of explorations were unsuccessful, which discouraged the government from funding dangerous expeditions.

**John Wesley Powell** noted that much of the West remained blank on maps and that the US lacked information about Colorado and other nearby states. He wished to explore and study the West, developing knowledge on the geography and geology of the land.

On May 24th, 1869, Powell and nine crew members departed on a perilous three month journey from Green River, Wyoming. His crew included a map maker, a cook, hunters, soldiers, and one wealthy Britishman. The men adventured down the Colorado river and through the Grand Canyon, recording information on the land and the surrounding Indigenous tribes along the way.

*Cearan Fax Costello*, Dramaturg

**I** first heard of *Men on Boats* shortly after moving to New York City in August 2016, just before it closed at Playwrights Horizons, and as we all stood on the precipice of a turbulent time of reckoning in our country. A few months prior, *Hamilton* swept the Tonys and for the first time in the award ceremony's history, four Black performers won in every musical acting category. Across the nation, many grappled with the question of how a story changes based on who is telling it; on a personal level, I was beginning to articulate my own shifting gender identity.

Enter this play about ten cisgender white men and their impact on this country, told by people who didn't identify as cisgender white men. This casting conceit set up camp in my mind as I continued my own storytelling and theatrical journeys. Almost seven years later, it's an honor to embark on this expedition, with this company, at an institution I'm proud to return to after graduating from UTK's Theatre department in 2016.

During this process we've explored the concept of identity as a performance, played with masculine and feminine presentation, and incorporated modern materials alongside natural elements as a means of examining how our contemporary society juts up against history. We invite the audience to walk alongside us in considering some of the questions we've asked: What does it mean to "play a man" when you are a woman? Non-binary? A gender for which you're still mapping a course and have yet to name? What pieces of yourself do you bring to the stage? What do you leave behind and what do you salvage following life's various boat wrecks?

*Men On Boats* is a play about people who were once real, who are now more myth than man; the proof of their mortality is perhaps never more acutely felt than where we see their lives translated here, via the freedom of the public domain. But their stories live on, told by those whose decisions shape our world today just as Powell and his men shaped the story of this country in its infancy.

Ultimately, we all live here, both those of us who are alive and those who've left us with only their stories. Those who closely resemble these characters and those who don't. We live on stolen land. On land that has been discovered and discovered and discovered—claimed and claimed again—with new names and descriptions that stretch across history and chart changes in this country of contradictions.

As you settle in for this journey, we hope you'll join us in opening up your imagination, in embracing the idea that by boldly acknowledging our differences we are able to see our threads of common humanity in even brighter relief. In doing so, may we all be inspired to continue expanding the narrative until our stages look like our society and our society reflects the dreams of our most daring, inclusive stories.

Oars up, oars out—we'll see ya down there,

*Ashlee Latimer*

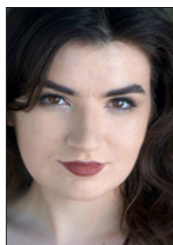
# THE CAST



## SHAHD ABBAS

(Assistant Director / *Understudy* - Powell, Old Shady, Hawkins, O.G., Seneca, Tsuawiat, The Bishop) is a 2021 UT graduate who studied Theatre and Leadership and was heavily involved

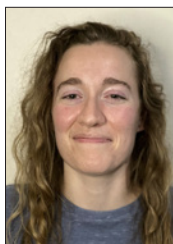
in the All Campus Theatre and Volunteer Short Films (the film club on campus) where she gained leadership experience in management, treasury, producing, and directing. She also enjoyed being a crew member for CBT shows such as *Urinetown*, *The Real Inspector Hound*, and *A Christmas Carol* (2019). Shahd is currently a Singing Server and is working on her own theatre projects in Nashville. She wants to thank Director Ashlee Latimer and UT's Theatre Department for the opportunity and for the warm welcome back to Knoxville.



## CATHERINE BLEVINS

(Frank Goodman, Mr. Asa / a desert settler - doubles with Goodman) Catherine is so excited to be a part of this production of *Men*

*on Boats*! Currently a junior at UTK, Catherine recently graduated with an AFA in Theatre from Pellissippi State and performed in many shows there including *The Musical Comedy Murders of 1940*, *Love and Information*, *Sappho at the Edge of the Abyss*, and *Popcorn at the Odessa*. Catherine also frequently works with other local theatre companies, having most recently been seen in River and Rail's production of the *The Wolves*. Catherine would like to thank all the amazing friends, family, directors, and instructors that have given their support over the years.



## MONICA GARDINER

(*Understudy* - Dunn, Sumner, Bradley, Hall, Goodman, and Mr. Asa) is a Studio Art major with a focus in 3D art, and a Theatre minor at the University of Tennessee-Knoxville.

She likes to do a little bit of everything in theatre including set design and construction, acting, crewing, prop management and artisanry, and pretty much anything else you can imagine. Monica is excited to be involved in this production and grateful to the Clarence Brown Theatre for this opportunity.



## ALLISON HAHN

(William Dunn) is so excited to be making her CBT debut in *Men On Boats*. Allison is a freshman at the University of Tennessee studying Advertising in the Film/TV Industry.

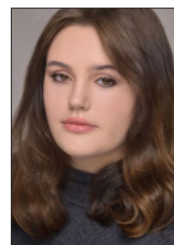
She has been acting since third grade and is grateful to be continuing her favorite activity in college. Allison would like to thank her mom, Ilyse, for always believing in her dreams, her sister, Emily, for convincing her to come to UTK, and she is especially thankful to her director, Ashlee, for never giving up on her and truly believing that she can do anything.



## JASMINE R. HANDY

(John Wesley Powell) Jasmine is both blessed and honored to be back in the Clarence Brown Lab Theatre. Originally from Atlanta, Georgia, she is seeking to complete her

Bachelor of Arts Degree in Theatre with an Acting Concentration. Her previous training includes attending the New York Conservatory for Dramatic Arts and Kennesaw State University's College of the Arts. This will be her third show at the University of Tennessee Department of Theatre. Previous CBT credits include *Blood at the Root* (Raylynn) and *Adaptive Radiation* (Olivia). She would like to extend special thanks to her loved ones for unwavering support, Carol Mayo Jenkins for coaching and guidance, and Ashlee Latimer for the opportunity and illuminating artistic direction.



## SARAH HAZLEHURST

(Hawkins) Sarah is a junior here at UTK, majoring in Theatre with an Acting concentration. Sarah is 20 years old and from Jackson, Tennessee.

She is thrilled to be playing Hawkins in this production and has had the best time working with the cast. She would like to dedicate her performances to her late grandfather, George Edward Hazlehurst, and his love for the Grand Canyon and adventure.



## MADISON M. MANSOURI

(Old Shady) is pursuing a double major in English and Theatre. She is thrilled to be making her CBT debut! Madison currently serves on All

Campus Theatre as the Marketing Director. A special thanks to her parents, brother, and friends for their continuous support.



## ABIGAIL MCCARTER

(Seneca Howland, The Bishop/Tsauwiat's Wife - doubles with Seneca Howland) is a Sophomore in the UTK Theatre and Psychology Departments. She is thrilled to be a part of

*Men on Boats*. While she acted throughout high school, this will be her second production with the Clarence Brown Theatre. She would like to thank Ashlee Latimer for the amazing opportunity. She would also like to thank her parents, especially her mom, for supporting her through the late rehearsals and early mornings.



# THE CAST



## SIDNEY SCARLETT

(John Colton Sumner)  
Sid is excited to embark on this new expedition, as this is their first show with CBT. Sid is a recent AFA graduate from Pellissippi State Community College and

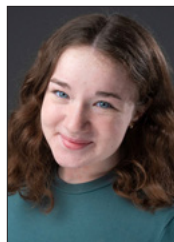
was heard in *Think Like A Dinosaur* and seen in *Love and Information*. Also with Pellissippi was their work as soundboard operator for the 2019 production of *Blood at the Root*. They have also operated the soundboard for *Ordinary Days* and *The Wolves* at the University of Memphis. Most recently seen in River and Rail's production of *The Wolves*, Sid is excited to continue their acting journey with the University of Tennessee.



## CAMERON SKILLEN

(Bradley) Cameron is absolutely thrilled to be working on this production of *Men on Boats*! Cameron is in her last semester at UT, majoring in Theatre and minoring in Religious

Studies and Nonprofit Organization. She has been involved in several productions around Knoxville since she has lived here, including the Clarence Brown Theatre's production of *A Christmas Carol* in 2019, and Theatre Knoxville Downtown's production of *The Haunting of Hill House* in 2021. Most recently, she has been seen in the Clarence Brown's production of *Adaptive Radiation* last fall. She would like to thank everyone that has supported her through college and hasn't let her give up on her dreams. Enjoy the adventure!



## ELLA TRISLER

(Hall) is thrilled to be performing on the Lab stage for the first time! Most recently, she appeared as a Puppeteer in the Clarence Brown Theatre's production

of *She Kills Monsters*. Over the summer, she participated in the BroadwayEvolved NYC Summer Intensive, where she had the opportunity to learn from several Broadway performers, including Wesley Taylor and Britt Mack. Some of Ella's favorite roles so far include Mayella Ewell in The Oak Ridge Playhouse's production of *To Kill A Mockingbird*, for which she won a Georgie Award in 2019 (Outstanding Performance by an Actress in a Featured Role), Kim MacAfee in *Bye Bye Birdie*, Louisa von Trapp in *The Sound of Music*, and Meg March in *Little Women: The Musical*.



## SARAH WAHRMUND

(O.G. Howland, Tsauwiat / an Ute Chief – doubles with O.G. Howland) is a junior at UTK majoring in Theatre with a minor in Vocal Performance. Previously, she has been in many

shows, including *Chicago* and *Twelve Angry Men* in high school, and *Guys and Dolls* at the East Brainerd Community Theatre. More recently, Sarah performed in CBT's *Adaptive Radiation* (Mel), and has been involved with All Campus Theatre throughout college. She would like to thank her family for supporting her and her love of theatre, and CBT for giving her this amazing opportunity.

Looking for things to do?

**knoxville**

Turn to Go Knoxville for a comprehensive guide

Every Friday inside the News Sentinel and all the time at [www.knoxville.com](http://www.knoxville.com)



# THE ARTISTS



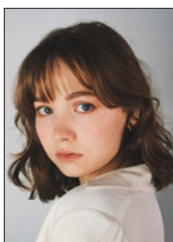
**ASHLEE LATIMER**  
(Director) Ashlee is a writer, producer, and director focused on creating work that supports and celebrates young people and students of all ages. A Knoxville native, she is a

proud alum of the University of Tennessee, Bearden High School, and the Knoxville Children's Theatre. Her Broadway co-producing projects include *Once On This Island* (Tony Award), *The Inheritance* (Tony Award), and *Be More Chill*. Favorite directing credits include *A Little Princess*, *Anne of Green Gables*, and *Little Women*. Her debut picture book, *Francis Discovers Possible*, was published with Abrams in 2022. She currently lives in Tennessee with her senior lab, Tyson, and takes the opportunity to travel whenever possible. You can find her online talking about books, theatre, and *Pride & Prejudice* (2005) at [@ALNL](#) on Twitter and [@ashleelaurnynichole](#) on Instagram. For Zack and Brandon.



**SOPHIE SMRCKA**  
(Scenic Designer) was born and raised in Colorado, and graduated with B.A.s in Theatre and Strategic Communications from the University of Denver in 2022. She is now a first-year MFA

candidate in Scenic Design at the University of Tennessee-Knoxville. *Men on Boats* is Sophie's first show with the Clarence Brown Theatre. More of her work can be found at [@smrckadesigns](#) on Instagram.



**KAELYN WILLIAMS**  
(Costume Designer) Kaelyn is a first year graduate student in Costume Design and this is her first show with the Clarence Brown Lab Theatre. She really enjoyed the design challenges this

production offered, and loved working with the amazing cast, crew and production team to help bring this story to life. She hopes you enjoy the show.



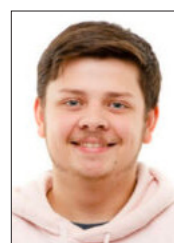
**KAYLIN GESS**  
(Lighting Designer) is a third-year MFA candidate in Lighting Design at the University of Tennessee-Knoxville. Gess was previously a Charlotte-based Lighting Designer, Scenic Designer, and

Scenic Painter who worked as the Assistant Technical Director at Davidson College, her alma mater from 2017-2020. Professional design credits include: NC Stage Company, Adjusted Realists (NYC), River and Rail Theatre, Actor's Theatre of Charlotte, Jobsite Theatre, Hat Trick Theatre, Patel Conservatory, M.A.D. Theatre of Tampa, and Davidson College. Gess most recently served as Projections Designer for *Adaptive Radiation* and was also the Lighting Designer on last season's *Blood at the Root*. Kaylin holds a B.A. in Theatre from Davidson College.



**ALLISON BUCHER**  
(Sound Designer) Allison is a Sound Designer from New Orleans, Louisiana and received a BFA in Theatre Design & Technology and a Minor in Media and Entertainment Arts from the University

of Southern Mississippi in 2022. She is now a first-year MFA candidate in Sound and Digital Media Design at the University of Tennessee, Knoxville. *Men on Boats* is Allison's first show with the Clarence Brown Theatre. More of her work can be found at [allisonbucher.com](#).



**LUCAS SWINEHART**  
(Projections Designer) is currently a Senior at the University of Tennessee pursuing a BA in Theatre Technology and Design. Lucas worked as an audio technician at the Utah Shakespeare Festival for

the 2022 season. Recent design and assistant credits include *Adaptive Radiation*, *Murder on the Orient Express*, *Our Tempest*, *The Curious Incident of the Dog in the Night-Time*, and *A Christmas Carol*. Lucas was also the Sound Designer for River and Rail Theatre's production of *The Wolves*.



**CEARAN JAX COSTELLO**  
(Dramaturg/Assistant Director) is in his third year at UTK. He is pursuing a dual degree in Civil Engineering and Theatre: Design and Technology. His

areas of focus are directing, stage managing, technical directing, scenic, and lighting design. Since being at UT, he Co-Stage Managed *Blood At The Root* (Clarence Brown Theatre), was Assistant Stage Manager/COVID Safety Manager for *Sweat* (River & Rail), directed *Twelfth Night* (All Campus Theatre), and has crewed CBT shows. He is currently the Managing Director of ACT. One of his favorite projects with ACT was writing and directing *When Bad Things Happen* for the 2020 One Act Fest. He hopes you all enjoy the show!

**CAROL MAYO JENKINS**  
(Voice/Text Coach) Carol has survived many years of professional theatre - On Broadway, Off-Broadway, Regional Theatre, as well as national television. She is delighted to be collaborating with her students on this production.



**EMILY ADAMS**  
(Stage Manager) Emily is a senior undergraduate at UTK and is pursuing a degree in Anthropology but Theatre is her true passion. When not at the theatre, you can find her at the movies or at home

reading a good book. She has assistant stage managed several productions at the Clarence Brown including *A Christmas Carol* and *She Kills Monsters* and she is so excited to be Stage Managing a CBT production! She would like to thank Patrick Lanczki for his guidance and patience and her family for their never ending support. Lastly, she hopes you enjoy the show!

# THE ARTISTS



## KENNETH MARTIN

(Department Head, Artistic Director) Ken comes from the University of Missouri, at Kansas City, where he was the Patricia McIlrath Endowed Professor and Chair of the Theatre Division. His

26-year career in academia also included nearly 18 years serving as chair of the theater departments of Coastal Carolina University in South Carolina and Ashland University in Ohio. Tremendously successful as an administrator at both institutions, Martin navigated curricular revisions and development, managed resources effectively and efficiently, created innovative collaborations, cultivated significant enrollment growth, and forged international partnerships. A member of United Scenic Artists, his designs have been seen at theatres across the country including Kansas City Repertory Theatre, Florida Repertory Theatre, New Theatre, Ohio Light Opera, Cleveland Ensemble Theatre, Ocean State Theatre and many others. He has also designed shows for many colleges and universities including Marquette University, University of Wisconsin-Stevens Point, Coastal Carolina University, Cuyahoga Community College, and The Ohio State University. Martin has actively served his profession as a respondent for the Kennedy Center American College Theatre Festival, as a consultant for several regional theaters and through active participation in organizations like the United States Institute for Theatre Technology, Educational Theatre Association and the Southeastern Theatre Conference.



## TOM CERVONE

(Managing Director) has dedicated most of his professional career (and life) advocating for and working in the best interests of the arts and culture industry, 25 years (and counting)

serving proudly as the managing director for the Clarence Brown Theatre/Department of Theatre at UTK. He previously served as the first executive director of the Historic Tennessee Theatre Foundation and the executive director for Dogwood Arts. Cervone spent many years on the board of the Arts and Cultural Alliance of Greater Knoxville, and currently serves on the boards of the WordPlayers, the Knoxville Children's Theatre, Department of Theatre and recently appointed to the Board of Governors of West Liberty University. Cervone remains active within the UTK community as a member of the Exempt Staff Council and Chancellor's Commission for LGBTQ people. He received the Chancellor's Citation for Outstanding Service to the University in 2010. He is a longtime member of the Actors' Equity Association. Cervone holds his undergraduate degree in Speech and English Education with an emphasis in Theatre from West Liberty University in West Virginia and an MFA (1993) and MBA (2010) from UTK. He is a graduate of and was selected as the Class Representative of the Leadership Knoxville class of 2011. Cervone is a member of his undergraduate alma mater's class of 2015 Alumni Wall of Honor.

# THE ARTISTS



## SUSAN L. McMILLAN

(Production Manager) is in her ninth year as Production Manager at CBT and UT Department of Theatre. In addition, she teaches Stage Management. Prior, Susan was the Production

Manager and Stage Management Instructor at the University of California, Santa Barbara, for 6 years. Susan is a member of Actors' Equity Association, and was a Stage Manager at the Oregon Shakespeare Festival for 18 years. Additionally, she has stage managed at the Guthrie Theatre, Shakespeare Theatre Company, Portland Center Stage, PCPA, Rogue Valley Opera, Portland Civic Theatre,

and has toured to the Kennedy Center. Through science and music (B.S. degrees in Biochemistry and Biology from Oregon State University), Susan found her passion in theatre. She is incredibly grateful for the opportunities and adventures, inspirational mentors, artistic and talented colleagues, amazing students, and the love and support of her family and friends.

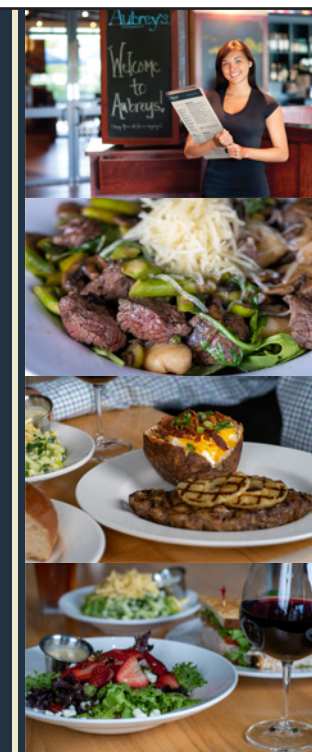
# Aubrey's

**KNOX AREA LOCATIONS**

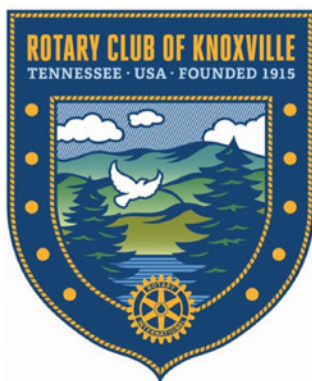
**CEDAR BLUFF . LENOIR CITY  
MARYVILLE . OAK RIDGE  
PAPERMILL . POWELL  
STRAWBERRY PLAINS**



[aubreysrestaurants.com](http://aubreysrestaurants.com)







## ROTARY INSPIRING THE WORLD

*for more than 100 years*

Come and visit a Rotary Club of Knoxville meeting. We meet every Tuesday at noon at the Crowne Plaza Hotel. Founded in 1915, we are Knoxville's oldest and largest service club, with around 150 members and always looking for more. The club is apolitical and secular, welcoming members from all communities.

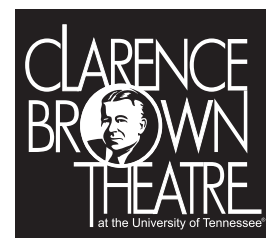
### •••• EACH YEAR OUR CLUB ••••

- Awards as many as three \$20,000 college scholarships
- Recognizes two Knox County teachers of the year with \$500 awards and \$250 gift certificates
- Provides \$20,000 for underserved students to take part in programs at the Knoxville Museum of Art and attend performances at the Clarence Brown Theatre, the Knoxville Opera, and the Knoxville Symphony Orchestra
- Grants as much as \$10,000 to a local community service project, and Volunteers at Free Flu Shot Saturday

### •••• INTERNATIONALLY, WE ••••

- Support preschools in Knysna, South Africa, in conjunction with local Rotary clubs
- Continue funding the End Polio Now effort, Rotary International's signature project
- Sustain clean water projects in 115 villages in Thailand
- Provide administrative support, water tanks, medical equipment, and kidney transplants to children in and around Mexico City
- Sent medical equipment and a vocational team to train medical professionals in Zimbabwe

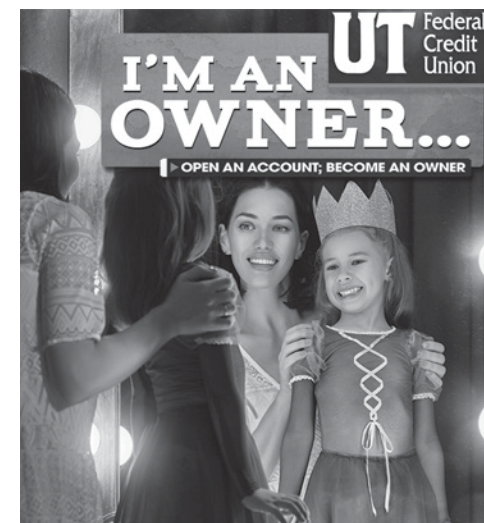
Learn more at [www.knoxvillerotary.org](http://www.knoxvillerotary.org)



STAY *Connected*



Leave a review of your theatre-going experience on Trip Advisor!



FEEL LIKE THE STAR OF THE SHOW  
AT UT FEDERAL CREDIT UNION!

- Checking, Savings
- Mortgages, Equities
- Vehicle Loans
- Personal Loans
- Share Certificates
- Financial Planning
- HSAs, IRAs
- Safe Deposit Boxes
- Full Business Suite
- ...and more!

**UTFCU.ORG | (865) 971-1971**

Federally insured by NCUA. Equal housing lender. MLC#408460.

# FROM CHOPIN TO COLTRANE TO CITY HALL

WUOT brings you the best of classical, jazz, and local news along with your favorite NPR programs. Tune in today at 91.9 FM, stream online at [WUOT.org](http://WUOT.org), or download the WUOT mobile app.

WUOT 91.9 fm  
[wuot.org](http://wuot.org) @wuotfm



# PRODUCTION CREW

## MANAGEMENT

Assistant Directors  
**Shahd Abbas**  
**Cearan Jax Costello**  
Assistant Stage Manager  
**Rachel Prior**

## COSTUMES

Wardrobe Supervisor  
**Elizabeth Aaron**  
Assistant Wardrobe Supervisor  
**Dottie Haller**  
Wardrobe Crew  
**Destinee Vess**

## SCENERY

Props Director  
**Monica Gardiner**  
Deck Crew  
**Amelia McCabe**  
**Gideon Rainey**

## LIGHTING

Production Electrician/  
Light Board Operator  
**Collin Davis**

## PROJECTIONS

Projections Operator  
**Amanda King**

## SOUND

Sound Board Operator  
**Amanda King**

## SWING CREW

**Caroline Bradley**

# PRODUCTION STAFF

## ADMINISTRATION

Artistic Director/Department Head -  
**Kenneth Martin**  
Managing Director - **Tom Cervone**  
Business Manager - **Tara Halstead**  
Accounting Specialist - **Le Anna Jacobson**  
Administrative Specialist - **Emily Pope**  
Marketing & Communications Director -  
**Robin Conklin**  
General Manager - **Vickie Carter**  
IT Specialist - **Mark Spurlock**  
Graphic Designer - **Julie Anna Summers**

## PATRON SERVICES

Manager of Ticketing and Sales  
**Sarah Burton**  
Box Office Manager - **Callie Bacon**  
Lead House Manager - **David Ratliff**  
Patron Service Associates - **Faridat Akindele,**  
**George Bull, Desirea Burke, Julie Carter,**  
**Jordan Gatton-Bumpus, Kidist Girmai,**  
**Diamond Leonard, Emma Massengill,**  
**Jordan McCready, Faith McManus,**  
**Anderson McNeil, Ariella Mingo,**  
**Whitney Priest, Brana Shankle,**  
**Ariyana Shaw, Emmy Sinclair,**  
**Savannah Smith, Lillian Snead,**  
**Justin Spinella, Emily Stone, Jenna Tiger,**  
**Jacob Toran and Avalon Trunzo**

## ENGAGEMENT/DEVELOPMENT

External Relations Manager - **Shelly Payne**  
Grants, Education, and Outreach Manager  
**Hana Sherman**  
Tours, Workshops - **David Brian Alley**  
Summer Acting Workshops,  
Actor Talk Backs - **Terry D. Alford**

## PRODUCTION

Production Manager - **Susan L. McMillan**  
Rental Coordinator/Assistant Production  
Manager - **Phyllis Belanger**  
Production Stage Manager - **Patrick Lanczki**

## COSTUMES

Costume Shop Manager - **Melissa Caldwell-Weddig**  
Cutter/Draper - **Kyle Andrew Schellinger**  
Costumers - **Elizabeth Aaron, Amber Williams,**  
and **Laura Clift**  
Costume Assistants - **Alex Heder**  
and **Kaelyn Williams**  
Costume Maintenance Crew - **Alana Mara**  
and **Mahum Malik**

## ELECTRICS

Electrics Shop Manager - **Travis Gaboda**  
Lead Electrician - **Jon Mohrman**

## SCENERY

Technical Director - **Jason Fogarty**  
Assistant Technical Director - **George Hairston**  
Lead Carpenter - **Jerry D. Winkle**  
Senior Carpenter - **Kyle L. Hooks**  
Scene Shop Assistants - **Sophie Smrcka**  
and **Becca Stockhaus**  
Scene Shop Volunteer - **Grace Bartoo**  
Scenic Charge Artist - **Jillie Eves**  
Scenic Artist - **Sophie Smrcka**

## PROPERTIES

Props Supervisor - **Christy Fogarty**  
Lead Properties Artisan - **Sarah Gaboda**  
Prop Assistants - **Monica Gardiner, Jacob Leon,**  
**Michaela Lochen, Aliah Mahalati,**  
**Sophie Smrcka, and Katie Stepanek**

## SOUND

Sound Supervisor - **Mike Ponder**  
Sound Assistants - **Allison Bucher**  
and **Amoirie Pertee**



## APRIL 19 – MAY 7

CLARENCE BROWN THEATRE

*The rock musical that  
started it all!*

A joyous rebellion that reclaims love  
as the heart of what it means to be  
American. Packed with beautiful,  
irreverent, and deeply evocative  
music, the quirky, all-inclusive vibe  
doesn't shy away from poignant  
social commentary.

**BUY TICKETS NOW**





WUTK FM • 90.3 THE ROCK

**VOLUNTEER  
RADIO**

**Voted Knoxville's BEST Radio Station 16 years in a row!**

**Blank News "Knoxville's Finest Radio Station" 2015-2021**

**The Funhouse w/Rob & Derek "Best Personalities" 2021**

**Rock Solid Sports "Best Radio Sports Show" 2021**

**Voted Best Knoxville Twitter @WUTKTheRock 2020-21**

**CELEBRATING 40 YEARS IN 2022!**

- ★ **Modern Rock**
- ★ **Local Music**
- ★ **Specialty Shows**

**ROCKIN' EARS  
FOR 40 YEARS!**

***WUTK is proud to be a media sponsor of  
CBT's 2021/2022 Season of amazing performances.***

**MAKE A TAX DEDUCTIBLE DONATION  
to help keep listener supported WUTK  
on the air at [wutkradio.com](http://wutkradio.com)!**

**On the Air and Streaming 24.7.365 [WUTKRADIO.COM](http://WUTKRADIO.COM)  
or listen on your free  tunein app.**

Follow us:    

**CLARENCE BROWN THEATRE**  
at the University of Tennessee

## 2022/2023 Advisory Board Members

**Julie Howard**, Chair

**Margie Nichols**, Immediate Past Chair

**Steve Drevik**, At-Large

**Alexander Waters**, At-Large

Jennifer Banner

Larry Brakebill

Will Brewer

Amy Caponetti

Lisa Carroll

Jeff Cheek

Brooks Clark

Katharine Pearson Criss

Leann Dickson

Steve Drevik

Danielle Ely

Pamela Given

Amy Morris Hess

Julie Howard

Erica Lyon

Maureen Dunn McBride

Margie Nichols

John North

Sara Phillips

Vladimir Protopopescu

Lee Riedinger

CortneyJo Sandidge

Susan Sgarlat

Pedro Tomás

Alice Torbett

Bob Trigiano

Robin Turner

Terry Tyler

Georgiana Vines

Alexander Waters

Donna Wertz

Melanie Wood

Wendy Wortham

### **Emeritus**

Charlie Brakebill\*

Joe De Fiore

Susan Ferris

Townes Lavidge Osborn

Jan Simek

### **Ex Officio**

Tom Cervone

Kenneth Martin

Holly Jackson-Sullivan

Stephanie Wall

\* Deceased



## MEMBERSHIP INFORMATION

The CBT Society has come a ways since its early days. What hasn't changed though is the vital investment CBT Society members provide for the Clarence Brown Theatre's programs and activities, year after year.

**Become a member today and make a difference in the next generation of theatre artists!**



*Interested?*

Visit us at  
[clarencebrowntheatre.com/cbt-society](http://clarencebrowntheatre.com/cbt-society)

## 2022/2023 SEASON - LEVELS AND BENEFITS

### ARTISTS CIRCLE (\$2,500+)

Benefits listed below, plus:

- ★ Dinner with new Producing Artistic Director
- ★ One private viewing for two from the Stage Manager booth for select MainStage shows (*excludes Opening Nights; must be requested two weeks in advance.*)

### PRODUCER CIRCLE (\$1,000 – \$2,499)

Benefits listed below, plus:

- ★ Invitation to the annual Donor Appreciation Party
- ★ Reserved Seating for Lab Theatre shows (first come, first served)
- ★ CBT will donate up to 10 tickets to a non-profit organization of your choice, upon request (*excludes Opening Nights; subject to availability; must be requested two weeks in advance.*)

### DIRECTOR CIRCLE (\$750 – \$999)

Benefits listed below, plus:

- ★ VIP Parking\* (first come, first served)
- ★ One personalized behind-the-scenes tour during the 2022/2023 Season (must be requested two week in advance; subject to availability)

### RISING STAR (\$500 – \$749)

Benefits listed below, plus:

- ★ CBT Society tumbler with unlimited refills for the 2022/2023 Season\*
- ★ Pair of complimentary vouchers for a performance during the 2022/2023 Season\* (*excludes Opening Nights*)

### LEADING PLAYER (\$250 – \$499)

- ★ Listing on the CBT website, and in all the virtual season programs
- ★ Invitation to Season Opening Celebration (*tentatively scheduled for fall 2022*)
- ★ Invitation to the annual NYC Theatre Trip (*tentatively scheduled for spring 2023*)
- ★ Invitation to first read-throughs and design presentations

*\*All levels are fully tax deductible.*

*\*\*\* Benefits are subject to change, cancellation, and/or may be moved to virtual if needed. CDC and University of Tennessee guidelines will be adhered. \*\*\**



# THEATRE FACULTY

## PROFESSORS

**Kenneth Martin** Department Head,  
CBT Artistic Director  
**Casey Sams** Movement & Musical Theatre,  
Associate Department Head  
**Kenton Yeager** Lighting Design,  
Head of Graduate Studies

## ASSOCIATE PROFESSORS

**Jed Diamond** Acting  
**Joe Payne** Sound and Media Design  
**Christopher Pickart** Scenic Design

## ASSISTANT PROFESSORS

**Kathryn Cunningham** Voice and Speech  
**Gina Di Salvo** Theatre History  
and Dramaturgy  
**Shinnerrie Jackson** Acting  
**Lauren T. Roark** Costume Design  
**Neno Russell** Costume Technology

## LECTURERS

**David Brian Alley** Senior Lecturer in Acting,  
Head of Undergraduate Studies  
**Terry D. Alford** Distinguished Lecturer  
in Music Theatre  
**Tracy Copeland Halter** Acting  
**Steve Sherman** Acting  
**Laura Beth Wells** Acting  
**Katy Wolfe** Voice

## ARTISTS IN RESIDENCE

**Carol Mayo Jenkins** Acting

## ADJUNCT FACULTY

**Misty Anderson** Professor of English and  
Theatre, English Department  
Allen C. Carroll Chair of Teaching  
**Stanton B. Garner, Jr.** Professor of English  
and Theatre, Chair, Department  
of English

## EMERITUS

**Bill Black** Costume Design & Technology  
Professor Emeritus  
**Kate Buckley** Directing Professor Emeritus  
**Marianne Custer** Costume Design  
Professor Emeritus  
**Calvin MacLean** Department Head,  
CBT Artistic Director, Professor Emeritus  
**John Sipes** Acting, Directing & Movement  
Professor Emeritus  
**Terry Weber** Acting, Voice Professor Emeritus

# GRADUATE STUDENTS

**Davion T. Brown** - Acting  
**Allison Bucher** - Sound and Media Design  
**Rachel Darden** - Acting  
**Alex Heder** - Costume Design  
**Kaylin Gess** - Lighting Design  
**M.J. Hromek** - Costume Design  
**Michaela Lochen** - Scenic Design  
**Amberlin McCormick** - Acting

**Josh J. Mullady** - Lighting Design  
**Michael Najman** - Acting  
**Amoirie Perteet** - Sound Design  
**DJ Pike** - Scenic and Digital Media Design  
**Christine Sage** - Acting  
**Sophie Smrcka** - Scenic Design  
**Kaelyn Williams** - Costume Design  
**Mitch Wilson** - Lighting Design



For additional information or to join, please contact us at [CBTSociety@utk.edu](mailto:CBTSociety@utk.edu)

## ARTISTS CIRCLE

James Alan Carmichael  
and Cynthia Moxley  
Dr. Jeffrey and  
Virginia Eberting  
Laura Kimsey Eshbaugh  
Pamela and James Given  
Michael Higdon  
The Lederer Family  
Theresa Lee and Jacob Love  
Mrs. Townes Lavidge Osborn  
and Robert S. Marquis  
Linda and Terry Tyler

## PRODUCER CIRCLE

Jennifer Banner  
Larry and Jeanie Brakebill  
Sandra and Peter Campbell  
Lisa Carroll  
Dr. Jimmy and Ileen Cheek  
Michael Combs  
Elizabeth A. Craig  
Steve Drevik  
Susan and Kent Farris  
Drs. Joe and Jayne De Fiore  
Drs. Nancy Duckles  
and Cameron Sears  
Steve Drevik and  
Le Ann Rogers  
Stanton and Alison Garner  
Tara and Scott Halstead  
Vickie Ellis and Joe Hoagland  
Prof. Amy Morris Hess

John and Susan Hoffman  
Julie Howard and  
Ted Flickinger  
Susan and Jerry Kornegay  
Robert and Brenda Madigan  
Maureen Dunn McBride  
and Neil McBride  
Mr. Arthur G. Mitchell  
Margie Nichols and John Gill  
Linda B. Norris  
Hei Park  
Meredith Peccolo  
and James Vaughan  
Susan Sgarlat  
Patricia Roux-Sharp  
Jan and Mary Ann Simek  
Donna Solod  
Donald Thorne  
Alice Torbett  
Nancy Voith  
and Kenneth Stark  
Donna and Terry Wertz  
Wendy and Dale Wortham

## DIRECTOR CIRCLE

Donna and Randall Riggs  
Brooks and Karen Clark

## RISING STAR

Jeff and Laura Allen  
Myrwood Besozzi  
Will and Rebecca Brewer  
Mr. John L. Butler, Sr.

Clay S. Davis, Jr.  
Christopher and  
Kelly Herbstritt  
Dr. Jeffrey D. Kovac  
Dr. Samantha Murphy  
and Mr. Justin Roby  
Sheena McCall  
Sarah Phillips

## LEADING PLAYER

Anne G. Armstrong  
Amy Caponetti  
Leann and James Dickson  
Dr. Stuart B. Elston  
Cynthia Gibson  
Dennis F. Hayward  
Lyle and Trish Irish  
Herbert Kupfer  
Michael and Nancy Lofaro  
John D. North  
Vladimir Protopopescu  
CortneyJo  
and Calvin Sandidge  
Robert Trigiano  
Georgiana Vines  
Alexander Oaks Waters



The Arts & Culture Alliance thanks the Clarence Brown Theatre for participating in Penny Performances, giving every child in Knox County, (including home-schooled and private-schooled student,) an opportunity to attend arts and culture events/activities at the maximum cost of ONE PENNY when accompanied by an adult (during the 2022/2023 academic school year).

**www.PENNY4ARTS.com**



New this year, we will have one membership level which will include all the literary lunches. Look for the return of Page2Stage Events in the future.

### **MARIAN BROWN'S CIRCLE MEMBERSHIP (\$100) includes the following benefits:**

- Personal scripts of four plays (*Murder on the Orient Express*, *Adaptive Radiation*, *Trouble in Mind*, and *Men on Boats*)
- Marian Brown's Circle tote and journal
- Listing on the CBT website, and in the CBT MainStage & Lab Theatre virtual programs
- Invitation to attend the Literary Lunches (lunch provided)
- Invitation to attend Page2Stage events (for additional cost – currently on pause for the 2022/2023 Season)
- One guest pass (to be used for one Literary Lunch)

### **SPRING MEMBERSHIP (\$50) includes the following benefits:**

- Two literary lunches
- Scripts for *Trouble in Mind* and *Men on Boats*

*"An excellent way to advance your understanding and enjoyment of the Clarence Brown Theatre experience. I highly recommend becoming a part of this circle."*

*~ MBC Member*

For questions about your MBC membership or benefits, please contact us at [Marian\\_Brown\\_Circle@utk.edu](mailto:Marian_Brown_Circle@utk.edu) or call Hana Sherman at (865) 974-7160.

**[clarencelbrowntheatre.com/mbc](http://clarencelbrowntheatre.com/mbc)**

\*\*\*Benefits are subject to change, cancellation, and/or may be moved to virtual if needed. CDC and University of Tennessee guidelines will be adhered to.\*\*\*



# CBT Ways to Give

Looking for a way to support the CBT? Whether online, by mail, over the phone, or carrier pigeon (just kidding on that last one, unless you can make it work!), the impact is the same, helping support the Clarence Brown Theatre into the next 50 years of professional theatre. A complete list of CBT's established scholarships, endowments, and general funds are listed below.

**Online** { [clarencebrowntheatre.com/donate-now](https://clarencebrowntheatre.com/donate-now)

**By Mail** { Checks, made payable to **University of Tennessee**, can be mailed to: { Clarence Brown Theatre  
Attn: Development  
206 McClung Tower  
Knoxville, TN 37996

(Unless otherwise stated, donations received via mail will go towards our general Theatre Enrichment Fund.)

**By Phone** { Provide your credit card information via phone by calling our Development liaison at **(865) 974-5654**.

For more ways to give, including UT Payroll, Corporate matching gifts, and planned giving, please visit [clarencebrowntheatre.com/ways-to-give](https://clarencebrowntheatre.com/ways-to-give)

## CBT Funds

CBT Artists Endowment  
CBTS Scholarship Fund  
Charles F. Brakebill  
Artists Endowment  
Joyce Brakebill  
Theatre Scholarship  
Clarence and Marian Brown  
Theatre Endowment  
James Brimer Scholarship  
Carousel Theatre Building Fund  
Thomas A. Cervone Scholarship  
in Graduate Acting  
Robert and Mary Neal Culver  
Scholarship Endowment  
William Desmond Scholarship  
for the Performing Arts  
Endowment  
Ula Love Doughty/Carousel  
Theatre Endowment

Emily Mahan Faust  
Graduate Fellowship  
Ralph Frost Memorial  
Scholarship Endowment  
Barbara E. Lederer  
Artists Endowment  
Rel & Wilma Maples Endowment  
Ellis Mays Theatre Endowment  
Townes Lavidge Osborn  
Endowment  
Stuart & Kate Riggsby Resident  
Artist Faculty Endowment  
The Dan Owenby  
Scholarship Fund  
Sara A. Phillips  
Artists Endowment  
Lee and Tina Riedinger  
Artists Endowment

Franklin Everett Robinson  
Artists Endowment  
Seth M. Rowan Endowment  
Dr. & Mrs. David L. Shea  
Award Endowment  
Paul L. Soper  
Professorship Fund  
Elizabeth S. Stowers  
Artists Endowment  
Liz Stowers Theatre Scholarship  
Endowment in Design  
Theatre Enrichment Fund  
W. David J. Torbett Artists  
Endowment  
Carl Vines, Jr. Award  
James Gray Walls, Jr.  
Scholarship Endowment



*Thank you* to our most generous  
2022/2023 Season supporters.



**Bob & Margie  
Parrott**

**Liz & Wes  
Stowers**



**Mildred Haines and William Elijah Morris Lecture Endowment Fund**



# THANK YOU

Every gift, big or small, makes an impact on our students, our faculty and staff, the Clarence Brown Theatre, and the arts in this community. No matter the fund, we wanted to say **thank you** to our supporters. Contributions listed below are from July through January 2023. For corrections to your acknowledgement name, please contact Shelly Payne at [shellypayne@utk.edu](mailto:shellypayne@utk.edu)

Dr. Robert C. and  
Elizabeth Alley  
Jeff and Laura Allen  
Andrea J. Anderson  
Anne G. Armstrong  
Jennifer Banner  
Don Barkman  
Melissa Logan and  
Edward Barnes  
Anne N. Becker  
John Begovich  
Phyllis Belanger  
Myrwood Besozzi  
Dr. James and  
Constance Brace  
Larry and Jeanie Brakebill  
Catherine Brewer  
Will and Rebecca Brewer  
Gretchen Burleigh-Johnson  
Lawrence Bushkell  
Mr. John L. Butler, Jr.  
Sandra and Peter Campbell  
Dr. Amy Caponetti  
James Alan Carmichael  
Suzanne Carriere  
Elizabeth W. Carroll  
Bonnie C. Carroll  
and Roy Cooper, Jr.  
Dr. Michael E.  
and Jane Casey  
Dr. Jimmy and Ileen Cheek  
Lauren Chiles  
Sue Clapp  
Brooks and Karen Clark  
Christopher Clark  
F. Michael Combs  
Kenneth Cook  
Sheila R. Cooper  
Jennifer Corum  
Kenneth and Jane Creed  
Gary Dagnan

Nancy DeCosta  
Drs. Joe and Jayne De Fiore  
Robert C. DeVault  
Leann and James Dickson  
Dr. Gina Di Salvo  
and Mr. Jeffrey Tinley, Jr.  
Steve Drevik and  
Le Ann Rogers  
Drs. Nancy Duckles  
and Cameron Sears  
Dr. Jeffrey and  
Virginia Eberting  
Vickie Ellis and  
Dr. Joe  
Hoagland  
Dr. Stuart B. Elston  
Laura Kimsey Eshbaugh  
Norm & Doris Featherston  
Bradley Frank and  
Meagan LeBlanc  
William and Dianne France  
Brian Gard  
Stan and Alison Garner  
Charles P. Giambrone  
Cynthia Gibson  
and David Gilbert  
Patricia Gillespie  
Pamela and James Given  
Rebecca Gompf  
Tara and Scott Halstead  
Katie Elise Harrill  
Dennis F. Hayward  
Gordon & Laurie Hendrich  
Christopher and  
Lauren Herbstritt  
Brandon Herriage  
Prof. Amy Morris Hess  
Michael Higdon  
Mr. John George Hoffman III  
Lyn and Marilyn Hollis  
Steven Horton

Julie Howard and  
Ted Flickinger  
Sandra Huddleston  
Lyle and Trish Irish  
Markus A. Iturriaga  
Allen Johnson  
Suzanne Jonas  
Arthur P. Jones, Jr.  
Susan Justice  
Jessica Margaret Kavanagh  
Lucy Xiao-Guo Keh  
Gary E. Kinney  
Susan and Jerry Kornegay  
Dr. Jeffrey D. Kovac  
Sharon Kreis  
Bill and Jan Larson  
Stephen LaVie  
The Lederer Family  
Theresa Lee and Jacob Love  
Dr. Michael and  
Nancy Lofaro  
Mary Clare Long  
Laura Lucas  
Robert and Brenda Madigan  
Dr. Charles J. Maland  
Carla Hayes Manzuk  
Lillian Mashburn  
Maureen Dunn McBride  
and Neil McBride  
John & Pam McGill  
Susan McMillan  
Lynn Menendez  
Jean Mercer  
Amanda Middleton  
Tom Mishu  
Mr. Arthur G. Mitchell  
Dr. Charles L. Mitchell  
Morgan Robinson Moody  
Dawn Marie Moore  
Virginia K. Morrow  
Brenda K. Mosko

Dr. Samantha Murphy  
and Justin Murphy  
Mildred B. Myers  
Lindsay Plett Nance  
Linda B. Norris, In Memory of  
Mrs. Joyce Brakebill and  
Mr. Charles F. Brakebill  
Lisa Norman, In Memory of  
Dr. Thomas P. Cooke  
John D. North  
Kitty Ann Norton  
Carole Ortenzo  
Mrs. Townes Lavidge Osborn  
Paul Pardue  
Hei Park  
Dr. Stanley Park  
Joe and Shelly Payne  
Meredith Peccolo  
and James Vaughan  
Marie Perelman  
Sara Phillips  
Chris Pickart  
Steven Pierce  
James and Emily Plemmons  
Vladimir Protopopescu  
Betsy Quinn  
Karen Reagor  
Donald Eugene Rickels  
Donna and Randall Riggs  
Lauren Roark and  
Spencer Christensen  
Susan M. Roberts  
Margaret Rodgers  
Thomas and Carol Rosseel  
Patricia Roux-Sharp  
Brianna Elaine Rubens  
Carol Jane Rule  
David and Nancy Rutherford  
Casey Sams and  
Kenton Yeager  
Cortney Jo and  
Calvin Sandidge  
Mr. and Mrs. Ken Scarbro  
Andrew and Caitlin Seidler  
Bryan and Brandi Self  
Susan Sgarlat

Steven and Hana Sherman  
Joshua and Jill Shuter  
Harry Siler  
Jan and Mary Ann Simek  
Helen Sirett  
Tana and John Slater  
Donna Solod  
Dr. Gordon K. Soper  
Liz and Wes Stowers  
Julie Anna Summers  
Brooke M. Swart  
Taylor and Ravyn Thomas  
Donald Thorne  
Pedro Tomás and  
Roger Roark  
Robert N. Trigiano  
Cheryl Tupton  
Robin C. Turner  
Linda and Terry Tyler  
Georgiana Vines  
Nancy Voith and  
Kenneth Stark  
Stephanie Wall  
Alexander Waters  
Erick and Laura Weber  
Terence and Jeni Weber  
Donna and Terry Wertz  
Brooke Wilbanks  
Robert P. Wilson  
Basil and Kay Wolfe  
Wendy and Dale Wortham

## Marian Brown's Circle Members

Priscilla Bright  
Constance Burnett  
Steve Drevik  
Vickie Ellis  
Mardel Fehrenbach  
Virginia Kerwin  
Jerry Kornegay  
Susan Kornegay  
Sharon Kreis  
Stephen LaVie

Maureen McBride  
Sheena McCall  
Margie Nicols  
Linda Norris  
Sarah Phillips  
Donna Riggs  
Fran Scheidt  
Helen Sirett  
Linda Tyler  
Terry Tyler  
Georgiana Vines  
Donna Wertz

## Corporate, Foundation and Grant Support

Arts & Cultural Alliance  
Aubrey's  
City of Knoxville  
Clayton Foundation  
The Department of  
the Treasury  
The Mildred Haines and  
William Elijah Morris  
Lecture Endowment  
Knox County  
Knox County Tourism  
Consortium  
National Endowment  
for the Arts  
Bob and Margie Parrott  
Pilot Company  
Rotary Club of Knoxville  
Tennessee Arts Commission  
The Shubert Foundation,  
Inc.  
Liz and Wes Stowers  
UT Federal Credit Union



AVAILABLE NOW AT YOUR COUNTY CLERK'S OFFICE  
**\$35**

# BACK THE ARTS WITH THE NEW ARTS PLATE



## SUPPORT ARTS IN YOUR SCHOOLS AND COMMUNITY

No need to wait until your tags expire, you can exchange your license plate anytime. Fees will be prorated

For more information about specialty license plates, visit [tn.gov/revenue/vehicle](http://tn.gov/revenue/vehicle)



IT TAKES COURAGE  
TO LIGHT THE WAY

IT TAKES A  
VOLUNTEER

Visit [tiny.utk.edu/volstories](http://tiny.utk.edu/volstories)  
to read about Volunteers in action.



THE UNIVERSITY OF  
TENNESSEE  
KNOXVILLE

## 2022/2023

### CORPORATE, FOUNDATION & GRANT PROFILES



Headquartered in Knoxville, Tenn., **Pilot Company's** mission is to make life better for America's drivers. With more than 650 locations nationwide, Pilot Company is the largest retail operator of travel centers in North America. At Pilot Company we believe it is essential to give back to the community. Our founder, Mr. James A. Haslam II, established our philanthropic spirit when he started the company in 1958. Our employees all take part in giving their time, talents and efforts to various organizations throughout the year. Together we work to make our communities better places to work, play and live. Visit [www.pilotflyingj.com](http://www.pilotflyingj.com) for more information.



**City of Knoxville** - Knoxville's roots run deep and strong. The city has served as the hub of the region since its founding in 1791. The best of its Appalachian heritage remains today — a strong work ethic, a family-centered community, and an intense respect for the natural beauty that envelopes the region. The metropolitan Knoxville area was ranked the "best place to live in the United States and Canada" among cities with a population of fewer than 1 million. The ranking came from the Millennium edition of Places Rated Almanac. The results confirmed what most in this area have known for a long time - Knoxville is one of the best cities in the country!



#### Knox County Tourism Consortium

The Clarence Brown Theatre is a proud member of the **Arts & Culture Alliance's Knox County Tourism Consortium**, joining with 25 other art and heritage non-profits to attract and entertain more than 1.3 million people annually from countries as distant and diverse as Japan, New Zealand, the Russian Federation, Liberia, the Netherlands, and across South America. With support from the Hotel Motel Tax Fund, the Consortium contracts with Knox County to present more than 4,200 visitor-focused events and activities throughout the year.



**The Department of the Treasury** is the executive agency responsible for promoting economic prosperity and ensuring the financial security of the United States. The Department is responsible for a wide range of activities such as advising the President on economic and financial issues, encouraging sustainable economic growth, and fostering improved governance in financial institutions. The Department of the Treasury operates and maintains systems that are critical to the nation's financial infrastructure, such as the production of coin and currency, the disbursement of payments to the American public, revenue collection, and the borrowing of funds necessary to run the federal government. The Department works with other federal agencies, foreign governments, and international financial institutions to encourage global economic growth, raise standards of living, and to the extent possible, predict and prevent economic and financial crises. The Treasury Department also performs a critical and far-reaching role in enhancing national security by implementing economic sanctions against foreign threats to the U.S., identifying and targeting the financial support networks of national security threats, and improving the safeguards of our financial systems.

**The Mildred Haines and William Elijah Morris Lecture Endowment** supports campus visits of lecturers and scholars in all disciplines in the College of Arts and Sciences. The dean of the college solicits proposals from departments and academic programs for the use of the funds, appoints an advisory committee to review and make recommendations regarding the proposals, and makes awards

## 2022/2023

### CORPORATE, FOUNDATION & GRANT PROFILES

to the successful proposals. The advisory committee has a representative from the humanities, the social sciences, the natural sciences and the arts faculties of the college. The committee selects a chairperson from among its members. Committee members serve two-year terms and may be reappointed at the discretion of the dean.



**Knox County** is a county in the U.S. state of Tennessee. As of the 2010 census, the population is 432,226. Its county seat and largest city is Knoxville. The county is at the geographical center of the Great Valley of East Tennessee. Near the heart of the county is the origin of the Tennessee River at the union of the Holston and French Broad Rivers. Knox County was created on June 11, 1792 by Governor William Blount from parts of Greene and Hawkins counties, and has the distinction of being one of only eight counties created during territorial administration. It is one of nine United States counties named for American Revolutionary War general and first United States Secretary of War Henry Knox. Parts of Knox County later became Blount (1795), Anderson (1801), Roane (1801), and Union (1850) counties.



The **National Endowment for the Arts (NEA)**, established in Congress in 1965, is an independent federal agency that is the largest funder of the arts and arts education in communities nationwide and a catalyst of public and private support for the arts. By advancing equitable opportunities for arts participation and practice, the NEA fosters and sustains an environment in which the arts benefit everyone in the United States. The NEA's primary activities include grantmaking to nonprofit arts organizations, public arts agencies and organizations, colleges and universities, federally recognized tribal communities or tribes, and individual writers and translators. Grant applications are reviewed by panels of arts experts and individuals from across the country. All grants must be matched one-to-one by nonfederal sources, except for individual grants to writers and translators. NEA funding is appropriated by Congress annually.



**The Shubert Foundation, Inc.**, was established in 1945 by Lee and J.J. Shubert, in memory of their brother Sam and is dedicated to sustaining and advancing the live performing arts in the United States, with a particular emphasis on theatre and a secondary focus on dance. They are the nation's largest funder dedicated to unrestricted funding of not-for-profit theatres, dance companies, professional theatre training programs and related service agencies. The Shubert Foundation is especially interested in providing support to professional resident theatre and dance companies that develop and produce new American work.



The **Tennessee Arts Commission**, was created in 1967 by the Tennessee General Assembly with the special mandate to stimulate and encourage the presentation of the visual, literary, music and performing arts and to encourage public interest in the cultural heritage of Tennessee. TN Arts Commission Governing Policies can be found here. The mission of the Tennessee Arts Commission is to cultivate the arts for the benefit of all Tennesseans and their communities. Our vision is a Tennessee where the arts inspire, connect and enhance everyday lives. The Commission is supported by in part by the National Endowment for the Arts.





**(865) 974-5161**

**[clarencebrowntheatre.com](http://clarencebrowntheatre.com)**