

Blue Window

by CRAIG LUCAS

OCTOBER 25 - NOVEMBER 12, 2017

clarencebrowntheatre.com

CLARENCE
BROWN
THEATRE



at the University of Tennessee®

CRAIG LUCAS

Craig Lucas is a American playwright, screenwriter, theatre director, musical actor, and film director. He is currently Associate Artistic Director at the Intiman Theatre in Seattle. Born on April 30, 1951, and abandoned in a car in Atlanta, Lucas was adopted when he was eight months old by a Pennsylvanian couple. His adoptive family was conservative; his father was an FBI agent and his mother was a housewife. He graduated in 1969 from Conestoga High School in Berwyn, PA. In the 1960s and 1970s, Lucas was interested in the political left and discovered an attraction towards men. He recalls that his coming out made it possible for him to develop as a playwright and as a person. In 1973, Lucas graduated from Boston University, with a Bachelor of Arts in Theatre and Creative Writing. His mentor, Anne Sexton, urged him to try his luck in New York. He worked in many day jobs while performing in Broadway musicals including *Shenandoah*, *On the Twentieth Century*, and *Sweeney Todd* (musical). In 1991, he rewrote his play, *Missing Persons*, which a friend showed to director Norman Rene. Norman promised to produce the play when finished. This was the beginning of a fifteen-year collaboration. While working on *Missing Persons*, the two developed a musical revue entitled *Marry Me A Little*, about two people who live next to each other and never meet yet both sing about the failure to connect with others. After his



early work on romantic comedies, Lucas began to write more serious works about AIDS, including *Singing Forest* and *The Dying Gaul*, the latter of which was made into a film that Lucas also directed. Lucas also authored the book for *The Light in the Piazza*, which garnered him a Tony Award nomination. Lucas also directed classic

plays such as *Miss Julie* and *Loot*. His work is unintentionally divided in gay-plays (*Blue Window*, *Longtime Companion*) and straight-plays (*Reckless*, *Three Postcards*, *Prelude to a Kiss*). Lucas considers himself able to write about human problems in a global manner. In the last year, he won the Best American Play for *Small Tragedy* and the New York Film Critics Award for Best Screenplay for *The Secret Lives of Dentists*. In 2001, Lucas received an OBIE Award for his direction of Harry Kondoleon's *Saved or Destroyed*. Lucas' other awards include the Excellence in Literature Award from the American Academy of Arts and Sciences, the PEN/Laura Pels Mid-Career Achievement Award, the Outer Critics, L.A. Drama Critics, Drama-Logue and LAMBDA Literary Awards; he has also received a Tony Award nomination, and fellowships from the Guggenheim and Rockefeller Foundations, the National Endowment for the Arts and the PEW Charitable Trust and has been nominated for the Pulitzer Prize for Drama for his play, *Prelude to a Kiss*. ■



presents

Blue Window

by CRAIG LUCAS

Directed by **Terry Silver-Alford**

Original song "The Same Thing" music by Terry Silver-Alford
Lyrics by William Bolcom

Scenic Designer
Becca Johnson

Costume Design Coordinator
Amber Williams

Lighting Designer
Jordan Vera

Sound Designer
Jennifer Cox

Co-Stage Managers
Savannah Smith and Kara Eble Trusty

Producing Artistic Director
Calvin MacLean

Interim Managing Director
Thomas A. Cervone

"Blue Window" is presented by special arrangement with SAMUEL FRENCH, INC.

THE VIDEOTAPING OR MAKING OF ELECTRONIC OR OTHER AUDIO AND/OR VISUAL RECORDINGS OF THIS PRODUCTION OR DISTRIBUTING RECORDINGS ON ANY MEDIUM, INCLUDING THE INTERNET, IS STRICTLY PROHIBITED, A VIOLATION OF THE AUTHOR'S RIGHTS AND ACTIONABLE UNDER UNITED STATES COPYRIGHT LAW, FOR MORE INFORMATION, PLEASE VISIT:
WWW.SAMUELFRENCH.COM/WHITEPAPER



FROM THE DIRECTOR



*You are cordially invited
to a gathering at Libby's!*

RSVP, Regrets Only!

It's a Sunday evening. You're getting ready to go to a dinner party. You can't remember why you said "yes" to this invitation. You know the hostess well but feel quite certain that you won't know many, or any, of the other people there. Out of courtesy you'll show up knowing that you'd rather be home on the couch with a guitar in hand writing a new song.

Your dear friend has been in a "hard place" for a long time. You've suggested she throw a dinner party to get her out of her shell. She's agreed and the party's tonight. You volunteered to assist her but couldn't quite get your act together to get there early and help out. Now you're running late and feeling like a not so great friend. You'll try to be the life of the party so she won't stress too much.

You've been romantically interested in the hostess for a while. She's pretty, sweet, interesting and a bit of a mystery. She's invited you to her party. And although you despise small talk, you accept, hoping to have a chance to get to know her better and see what might happen.

Your significant other has accepted an invitation to a dinner party. You know that there will be no one there you know but this is "for him." And even though he doesn't seem very excited to go, you will do the right thing and tag along like a dutiful mate. Who knows, maybe the food will be good. Beats ordering take out again.

You're quite certain that the only reason you've been invited to this party is to impress the guest with your new-found fame. Your spouse is more interested in going than you are since the hostess lives upstairs in the building and she's been wanting to know what she's like... and while you do enjoy talking about yourself you're really not sure you want to go. You'll make up a code word with your spouse for when it's time to leave.

We've all been in one or another situation like the ones above. You show up at the party and you realize that there are few if any shared interests among you. But, the evening progresses and the conversation is lively. Ideas are shared, secrets revealed, and the evening passes. You've ended up having a better time than you expected. Monday looms!

Blue Window is a theatrical "slice of life." Craig Lucas' almost sociological look at a group of disparate people attending a party is fascinating and engaging. He taps into banality and the mundane in a far from mundane way. He invites the audience to the party and stirs our/their minds and hearts as the characters experience an unexplained transformation as they peer into or out of the *Blue Window*.

A handwritten signature in cursive script that reads "Jerry Silver-Alford".

THE CAST

Emily
Gracie Belt

Tom
Curtis Bower

Libby
Emily Helton

Norbert
Luke Atchley

Boo
Lauren Winder

Griever
Owen Squire Smith

Alice
Meg Sutherland

Alice - Understudy
Danielle Pressley

This production will not have an intermission.

Lab Theatre Productions

Welcome to an exciting evening of theatre. This production is part of the Clarence Brown Theatre's commitment to training. Our Lab Theatre productions are an important part of our dual mission. The production you are about to see is helping to prepare the students in our Master of Fine Arts and undergraduate programs to take their place as theatre artists. We hope you enjoy the play, and also enjoy the experience of witnessing the next generation of theatre professionals emerge. Look around you, for this production, this performance, might be one you remember when...

THE ACTORS



LUKE ATCHLEY

(Norbert) is a Knoxville native and currently completing his victory lap at UT. He's extremely excited to be completing the CBT Triple Crown by performing in the Lab Theatre. He has recently

been seen in the CBT productions *Of Mice and Men* and *Titus Andronicus*. He spent his summer in the Apprentice Program at The Great River Shakespeare Festival where he understudied roles in *Richard III* and performed as "Humphrey Gloucester", "Father", and "Montgomery" in *Henry VI: The Rise of Richard*. Luke would like to thank his professors, his friends, Terry, the cast and crew, and his family: Mom, Dad, Kelsey, Ava, Sophie, Lucy, and Ben for all of their support.



GRACIE BELT

(Emily) is a UT senior pursuing a BA in Theatre. CBT credits include: *Top Girls* (Nijo/Angie), *The Crucible* (Mary Warren), *South Pacific* (ensemble), *A Shayna Maidel* (Hanna), and *A Christmas Carol* 2014

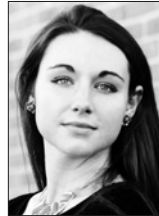
and 2015 (ensemble/musician). This summer, she was involved in an all-female cast of *Julius Caesar* directed by David Ratliff, and played the role of Beth in The WordPlayers' production of *Little Women*. She is a proud member of "Involuntary Sports Party," your friendly neighborhood improv troupe. Special thanks to Terry for this opportunity, and always, to Ben.



CURTIS BOWER

(Tom) is excited to be working with the CBT for the first time. He has previously worked with Tiger Lily Theatre (*Night of Shorts*) Seventy Thirty Creatives (*A Midsummer Night's Dream*) and Flying

Anvil Theatre (*The Great American Trailer Park Musical*). Curtis is an undergraduate at UT and a middle school music teacher at The Episcopal School of Knoxville. Do the work.



EMILY HELTON

(Libby) is a junior in UT's Theatre program. Previous UT stage credits include: *Mr. Burns: A Post Electric Play*, *South Pacific*, *The Crucible*, *A Christmas Carol* and *Top Girls*. When not in rehearsals or emailing

professors for deadline extensions, she can be found at Knoxville Children's Theatre teaching and playing with Knoxville's youth. To Casey, Carol, Katy, and her mother she gives her sincerest, warmest, snuggliest thanks for being strong women and true educators. And lastly, to her father, she says: "Good beer matters."

THE ACTORS



DANIELLE PRESSLEY

(Alice - Understudy) is a senior Theatre major at UT. She was last seen in the Lab Theatre in CBT's production of *Top Girls*. Most recently, she was seen in *Julius Caesar* with Lovers & Madmen. Favorite

past credits include Sex Week's *Extremities*, *Proof* with Theatre Knoxville Downtown, as well as *Bus Stop* and *Harvey* with Foothills Community Players. As always, Danielle would like to thank her family and friends for their unending love and support.



OWEN SQUIRE SMITH

(Griever) is a first-year MFA Acting candidate at UT. Originally from Grand Rapids, MI, he received his BFA in Acting for the Stage and Screen at Azusa Pacific University in California. Previous

credits include: *West Side Story*, *Faustus*, *A Midsummer Night's Dream*, *Lend Me A Tenor*, *Hairspray*, and *As You Like It*. He would like to thank Terry Silver-Alford for this wonderful opportunity, all the phenomenal professors, the supportive cast and crew, his entire loving family, Mom, Dad, and especially, God.



MEG SUTHERLAND

(Alice) is delighted to be returning to Clarence Brown this season in *Blue Window*! You may have previously seen her in the Lab Theatre this past spring in *Top Girls* (Marlene). Born and raised

in Nashville, TN, she is a senior at UT pursuing degrees in Communication Studies & Theatre. Some of her favorite past credits include: *Company* (Joanne), *Horse Girls* (Ashleigh Whitford), *Ragtime*, *The Vagina Monologues*, and *Rent*. She would like to thank all of her wonderful family and friends for their constant encouragement. Deepest gratitude to Terry Silver-Alford, Abi Langham, Carol Mayo Jenkins, Casey Sams, David Alley for their guidance and trust. For the Wistful Vista crew, and their unending support in all she does.



LAUREN WINDER

(Boo) is a senior Theatre major at the University of Tennessee. She is excited to be part of her fourth Clarence Brown Production. Previous credits include: *Mr. Burns: A Post-Electric Play*, *South Pacific*, *The Crucible*

and *Julius Caesar* with the Lovers and Madmen company. She would like to thank her professors for their training, patience, and support as well as her family for coming to all of her shows.

THE ARTISTS



TERRY SILVER-ALFORD

(Director) is a member of the UT Theatre faculty and teaches Musical Theatre Performance, Introduction to the Theatre and Acting. He has worked professionally as a director,

musical director, performer and composer at theaters across the country, including the California Theatre Center, Madison Repertory, Madison Children's Theatre, University of Madison Theatre and Opera Programs, Omaha Playhouse, Nebraska Caravan, Augusta Barn-Michigan, Fireside Theatre-Wisconsin, Light Opera of Oklahoma and the Clarence Brown Theatre. Terry has directed or musically directed numerous productions and has created the scores for four original musicals and a variety of chamber and vocal music pieces. CBT directing credits include: *South Pacific*, *A Shayna Maidel*, *CTRL+ALT+DELETE*, *The 25th Annual Putnam County Spelling Bee*, *The Little Shop of Horrors*, *Guys and Dolls*, *Assassins*, *Tick, Tick, Boom*, *Parade*, *Recent Tragic Events* and *Into the Woods*. CBT musical direction credits include: *The Busy Body*, *A Comedy*, *Violet*, *The Threepenny Opera* (conductor), *Monty Python's Spamalot*, *Kiss Me, Kate*, *The Music Man*, *Man of La Mancha*, *The Who's Tommy*, *A Christmas Carol*, *A Year with Frog and Toad* and *Big River*.

BECCA JOHNSON

(Scenic Designer), is a second-year MFA Scenic Design candidate. She attended East Carolina University for her undergraduate degree where she designed the set for *Rent* and *Lullaby*. Both of her designs received second place in the scenic design competition at the South-Eastern Theatre Conference. She was also the scenic designer for *This is Our Youth* here at the Clarence Brown Theatre. She hopes you enjoy the show!

AMBER WILLIAMS

(Costume Design Coordinator) has been at the Clarence Brown Theatre since 2007. As Senior Costumer, she constructs costumes, supervises students, and occasionally acts as craftsperson and first hand to the draper. As Wardrobe Supervisor, she devises backstage plans, trains student dressers, and has an apron full of bobby pins at the ready. Before returning to her home state in 2003, Amber stitched, crafted, and design assisted at San Francisco Opera, Santa Fe Opera, Utah Shakespeare Festival, Cleveland Playhouse, and CMC and Design, a private costume shop in San Francisco. She also designed costumes for two productions of *Alice in Wonderland* at St. Mark's School and Vector Theater, both in San Rafael, and *Twelfth Night* at San Francisco Shakespeare Festival. She adapted and directed two masked folktale shows in Japan and Texas. More recently, she designed *4000 Miles* at the CBT. Amber holds an MFA in Costume Design from Ohio University.

JORDAN VERA

(Lighting Designer) is a second-year MFA Lighting Design candidate. Jordan has recently designed for North Carolina Stage company's production of *Matt & Ben* and Oak Ridge Playhouse's production of *The Marvelous Wonderettes*. Before his time at the Clarence Brown Theatre he has designed for The California State Summer Arts Festival, and the Miami Summer Opera Music Festival. More of his work can be found on his website www.JveraDesigns.com. Jordan is excited to be working alongside a great group of artistic collaborators in his second show design at the Clarence Brown Theatre, and hope's you enjoy the show as much as he has.

THE ARTISTS

JENNIFER COX

(Sound Designer) is junior Theatre major and Italian minor at the University of Tennessee. Her primary focus is acting. However, she has taken a strong affinity to sound design and all its components. She is excited to debut her first sound design in the Lab Theatre with all her friends. She thanks you for supporting the work of all artists involved with this production. Enjoy the show!

SAVANNAH SMITH

(Co-Stage Manager) is a student at the University of Tennessee and she's studying Theatre with a minor in English. Her expected graduation is this fall so this will be her last Clarence Brown production. Savannah has worked on many Clarence Brown productions starting all the way back in 2014 where she was a spot light operator for *Monty Python's Spamalot*. Since then, she has worked as a Stage Management Assistants (SMA) for shows such as *The Threepenny Opera*, *The 39 Steps*, *A Christmas Carol*, *Titus Andronicus*, *South Pacific*, *Around the World in 80 Days*, and *Peter and the Starcatcher*. She has also worked as an Assistant Director for Kate Buckley in *Outside Mullingar* and was stage manager for last fall's production of *This Is Our Youth*. Savannah would like to thank her friends and family for all their love and support throughout her time at the Clarence Brown Theatre.

KARA EBLE TRUSTY

(Co-Stage Manager) is a senior Theatre major and English minor in her final semester at the University of Tennessee. She recently stage managed *Top Girls* in the Lab Theatre. Stage Management Assistants (SMA) credits include: *Violet*, *South Pacific*, *A Lesson Before Dying*, *A Christmas Carol* (2015), *A Midsummer Night's Dream*, and *The Trip to Bountiful* (Clarence Brown Theatre); *Marian, or the True Tale of Robin Hood* and *Girlfriend* (Know Theatre of Cincinnati). Next up is *A Christmas Carol* (2017)! She would like to thank her family and friends as well as her mentors and teachers at the university for their continued encouragement and support.

CALVIN MacLEAN

(Producing Artistic Director) is in his twelfth year as Theatre Department Head and CBT Company Producing Artistic Director. CBT productions he has directed include: *A Flea in Her Ear*, *The Life of Galileo*, *The Secret Rapture*, *A Streetcar Named Desire* (with Dale Dickey), *Amadeus* (with the Knoxville Symphony Orchestra), *Kiss Me, Kate*, *Sweeney Todd* (with the Knoxville Symphony Orchestra and Dale Dickey), *Our Country's Good*, *The Threepenny Opera*, *The Open Hand* and last season's *The Crucible*. Cal was the Artistic Director of the Illinois Shakespeare Festival for eleven seasons. Professionally active in Chicago, his productions – mostly at the Famous Door Theatre – earned several Joseph Jefferson Awards for Outstanding Production and Direction. Most notable was Joshua Sobol's *Ghetto*, a production that ran for seven months and honored with four Jeff Awards including for Outstanding Direction of a Play. Cal is the Past President of the University/Resident Theatre Association and a member of the National Theatre Conference. He and his wife Rebecca are the proud parents of Sam and Rachael.

THE ARTISTS

THOMAS A. CERVONE

(Interim Managing Director) is pleased and honored to be back at the theatre following a five-year hiatus, during which he served as Executive Director for both Dogwood Arts and the Historic Tennessee Theatre Foundation. Prior to that, Tom spent 23 years at the Clarence Brown Theatre, 17 of which as managing director (1995-2012). Throughout that time, he was very active within the UTK community, serving as Exempt Staff Council chair for many years, LGBT Commission co-chair, Diversity Council member, and participated in many other organizations/initiatives. He was the 2010 recipient of the Chancellor's Citation for Outstanding Service to the University. Tom served on the Arts and Cultural Alliance of Greater Knoxville board for several years, and currently serves on the advisory boards of the College of Business at Maryville College, the WordPlayers, and the River and Rail Theatre Company. Most recently, he was appointed to the Foundation Board of West Liberty University, his alma mater. He is a proud and longtime member of the Actors' Equity Association. Tom holds his undergraduate degree in Speech and English Education with an emphasis in Theatre from West Liberty University in West Virginia and a Master of Fine Arts and an MBA from UT. He is a graduate of and was selected as the Class Representative of the Leadership Knoxville class of 2011. Recently, he was inducted into his undergraduate alma mater's Class of 2015 Wall of Honor.



The University of Tennessee, Knoxville is one of just 12 universities nationwide with its own professional LORT theatre. The Clarence Brown Theatre Company is a LORT D company and is fully integrated into the Department of Theatre's academic curriculum. Four of the six mainstage productions are produced on the LORT contract, allowing students the opportunity to work with seasoned professionals.

Founded in 1974 with Sir Anthony Quayle as Artistic Director, the Clarence Brown Theatre Company is one of the older companies in the LORT system. It has a distinguished history of hosting artists of national stature including Mary Martin, John Cullum, Zoe Caldwell, Carol Mayo Jenkins, David Keith, Dale Dickey, and Teresa Williams among others.

All Department of Theatre faculty have dual appointments with the professional company in their area of expertise. MFA Performance students may join the Clarence Brown Theatre Company in their third year of study. MFA Design students have the opportunity to work on LORT productions throughout their graduate training.

COMPANY MEMBERS

Producing Artistic Director: Calvin MacLean
Interim Managing Director: Thomas A. Cervone

Terry Silver-Alford
David Brian Alley
Bill Black
Kate Buckley
Marianne Custer
Jed Diamond
Gina Di Salvo
Carol Mayo Jenkins
Abigail Langham
Patrick Lanczki
Joe Payne
Christopher Pickart
Mike Ponder
Casey Sams
John Sipes
Terry Weber
Kenton Yeager
Katy Wolfe

PRODUCTION CREW

MANAGEMENT

Stage Management Assistant
Danielle Kowalkowski

COSTUMES

Wardrobe Supervisor
Nicky Frazier

Wardrobe Crew
Clarke M. Smith

Wardrobe/Deck Crew
Tucker Comes

SCENERY

Deck Crew
Terrell Harris

LIGHTING

Assistant Lighting Designer
Collin Hall

Production Electrician/
Light Board Operator
Andrew Quigley

SOUND

Sound Board Operator
Connor Mize

SPECIAL THANKS

Italian Language Coach
Pedro Tomas

STAY *Connected*



Leave a review of your theatre-going
experience on Trip Advisor!



CLARENCE BROWN THEATRE



@CLARENCEBROWN

clarencebrowntheatre.com

CBT STAFF

LEADERSHIP

Producing Artistic Director - **Calvin MacLean**
Interim Managing Director -
Thomas A. Cervone

ADMINISTRATION

Marketing & Communications Director -
Robin Conklin
Business Manager - **Stephanie Wall**
General Management Associate -
Shelly Payne
Administrative Specialist - **Charlotte Holland**
Accounting Specialist - **Jill Baker**
External Relations Associate -
Amanda Middleton
Grants & Research Associate - **Hana Sherman**
Graphic Designer - **Julie Anna Summers**
IT Specialist - **Mark Spurlock**

PATRON SERVICES

Patron Services Manager - **Sarah Burton**
Assistant Patron Services Manager -
Morgan Moody
Lead House Manager - **David Ratliff**
Patron Service Associates - **Callie Bacon,**
Kelci Beavers, Rachel Britt, Ben Pratt,
Danielle Pressley, Ethan Roeder,
Meg Sutherland, Eric Thompson,
Lauren Whiteman
Archival Photographer - **Brynn Yeager**

OUTREACH/EDUCATION

Season for Youth, Tours, Workshops -
David Brian Alley
Summer Acting Workshops, Talk Backs -
Terry Silver-Alford

PRODUCTION

Production Manager - **Susan L. McMillan**
Production Stage Manager - **Patrick Lanczki**
Assistant to Production Manager/
Rentals Coordinator - **Ian Paul Messersmith**

COSTUMES

Costume Shop Manager - **Melissa Caldwell-Weddig**
Cutter/Draper - **Kyle Andrew Schellinger**
Costumers - **Elizabeth Aaron and Amber Williams**
Costume Assistants - **Quinn Phillips, Erin Reed**
Devin O'Neill and Laurel Tyree

ELECTRICS

Electrics Shop Manager - **Travis Gaboda**
Master Electrician - **Jon Mohrman**
Lighting Assistants - **Gracie Belt, Lisa Bernard,**
Bailee Boisclair, Sara Oldford, Hannah Simpson,
Alice Trent and Jordan Vera

SCENERY

Technical Director - **Don Conard**
Assistant Technical Director - **Jason Fogarty**
Master Carpenter - **Jerry D. Winkle**
Senior Carpenter - **Wes Smith**
Carpenter - **Will Lambert**
Carpenter Assistant - **Maggie Hobbs**
Scenic Charge Artist - **Jillie Eves**
Scenic Painters - **Jelena Andzic, Katie Moseley**
and **Cynthia Tipton**

PROPERTIES

Prop Shop Supervisor - **Christy Fogarty**
Lead Properties Artisan - **Sarah Gaboda**
Props Assistants - **Becca Johnson,**
Kathryn Nabors and Nevena Prodanovic

SOUND

Resident Sound Designer and
Sound Shop Supervisor - **Mike Ponder**