



THREE SISTERS

By **ANTON CHEKHOV**

A New Version by **LIBBY APPEL**



SEPTEMBER 27 - OCTOBER 15, 2017

clarencebrowntheatre.com



All the world's a stage...

Schaad

companies ■ since 1910

Over a Century of Innovation

construction ■ development ■ investments ■ management

Headquarters located on top of Bearden Hill in historic Knollwood Manor

Phone 865.637.2674 ■ Website www.schaadcompanies.com

150 Major Reynolds Place ■ Knoxville, TN 37919



presents

THREE SISTERS

A Play by **Anton Chekhov**

A New Version by **Libby Appel**

Directed by **Michael Fry**

Scenic Designer
Jelena Andzic

Costume Designer
Bill Black *

Lighting Designer
Alice Trent

Sound Designer
Matthew Tibbs *

Stage Manager
Shelly Pack Payne *

Producing Artistic Director
Calvin MacLean

Interim Managing Director
Thomas A. Cervone

The video and/or audio recording of this performance by any means whatsoever is strictly prohibited.

Clayton Foundation | **cf**

Stowers **CAT**

**THE KNOXVILLE
NEWS
SENTINEL**

**B THE
DAILY
BEACON**

**91.9
fm
WUOT**

**98.3
iROCK**



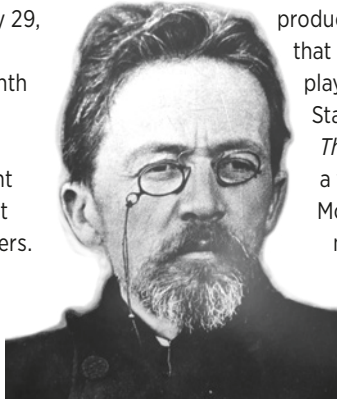
* The Designers in LORT Theatres are represented by **United Scenic Artists**, Local USA-829 of the IATSE.



* The stage manager appears through the courtesy of **Actors' Equity Association**, the Union of Professional Actors and Stage Managers in the United States.

ANTON CHEKHOV

Anton Pavlovich Chekhov (January 29, 1860-July 15, 1904) was one of the greatest dramatists of the nineteenth century. From Chekhov, many contemporary playwrights have learned how to use mood, apparent trivialities, and inaction to highlight the internal psychology of characters. Chekhov's four major plays — *The Seagull*, *Uncle Vanya*, *Three Sisters*, and *The Cherry Orchard* — are frequently revived in modern productions. Born the son of a grocer and the grandson of a serf, and brought up in a small port town on the Sea of Azov, he went to the University of Moscow to train as a doctor in 1879. On graduation, he practiced medicine in Moscow and wrote for the "St. Petersburg Gazette." His first full-length plays, *Ivanov* and *The Wood Demon*, were unsuccessful. After the failure of the first



production of *The Seagull* Chekhov swore that he would never have another play produced. However, Constantin Stanislavski persuaded him to revive *The Seagull*. Stanislavski gave it a very careful production at his Moscow Arts Theatre, employing his methods of acting and direction, and the play was recognized as an important new drama. *Uncle Vanya*, a reworking of *The Wood Demon*, followed *The Seagull*, quite successfully, although *Three Sisters*, again produced at the Moscow Arts Theatre, was not well received. In 1904, after the first production of *The Cherry Orchard*, Chekhov suffered two heart attacks and died in the German spa town of Bradenweiler, just as he was beginning to be recognized internationally as a major dramatist. He is buried in Novodevichy Cemetery in Moscow. ■



**PROSPERITY PARTNERS
WEALTH MANAGEMENT**



***Together we can take
the guesswork out of
your financial future.***

Wesley Price, CFP® specializes in cutting edge diagnostic tools that help make sure your portfolio aligns with YOUR investment goals, risk level and expectations.



**PROSPERITY PARTNERS
WEALTH MANAGEMENT**

Living, Loving and Leaving a Legacy

www.prosperitypartnerswm.com

Securities and investment advisory services provided by Geneos Wealth Management, Inc. Member FINRA/SIPC. Financial Planner Board of Standards, Inc. owns the certification marks CFP®, CERTIFIED FINANCIAL PLANNER and CFP® in the U.S., which it awards to individuals who successfully complete the CFP Board's initial and ongoing certification requirements.

THE CAST

Andrei Sergeyevich Prozorov

Brian Gligor *

Natalya (Natasha) Ivanovna

Charlotte Munson *

Andrei's Sisters

Olga Sergeyevna
Emily Kicklighter *

Maria (Masha) Sergeyevna
Carlène Pochette *

Irina Sergeyevna
Lauren Pennline *

Fyodor Ilyich Kulygin
Christopher Tramantana *

Aleksander Ignatyevich Vershinin
Christian Gray *

Nikolai Lvovich Tuzenbakh
Joseph McGranaghan *

Vasilii Vasilyevich Solyony
Miguel A. Faña *

Ivan Romanovich Chebutykin
Roderick Peeples *

Aleksei Petrovich Fedotik
Evan Price

Valdimir Karlovich Roday
Benjamin Pratt

Ferapont Spiridonych
Robert Stephan

Anfisa
Nancy Duckles

Orderly
Julius Gross

Orderly
Ben Terpstra

Maid
Celeste Pelletier

Maid
Maddie Poeta

This production has one 15-minute intermission.

Special thanks to Allison Horsley for the literal Russian to English translation.



* The actors appear through the courtesy of **Actors' Equity Association**, the Union of Professional Actors and Stage Managers in the United States.

LIBBY APPEL

Libby Appel is Artistic Director Emerita of the Oregon Shakespeare Festival. She was Artistic Director from 1995 through 2007, directing 30 plays. Prior to that, she was Artistic Director of Indiana Repertory Theatre and Dean and Artistic Director of the School of Theatre at California Institute of the Arts. She was also head of the acting program at California State University, Long Beach and taught acting at the Goodman School of Drama in Chicago.



Five Chekhov Plays. She is the author of *Mask Characterization: An Acting Process* and co-created and produced the video *Inter/Face: The Actor and The Mask*. She co-created the plays *Shakespeare's Women* and *Shakespeare's Lovers*. Libby is profiled in the documentary *Meeting With Chekhov*.

Libby has directed in theatres throughout the country doing over 30 productions of Shakespeare's plays and all of Chekhov's. She recently completed new translations of *Ivanov*, *The Seagull*, *Uncle Vanya*, *Three Sisters* and *The Cherry Orchard* for the new book

Libby has honorary doctorates from Southern Oregon University, University of Portland and Willamette University. She has an MA from Northwestern University and a BA from Michigan (Phi Beta Kappa). She is the recipient of the Stephen and Christine Schwarzman Award for Excellence (Lifetime Achievement in Theater) from the Kennedy Center. ■

MAKING PROGRESS POSSIBLE



As a locally owned company serving the construction industry in East Tennessee since 1960, Stowers Machinery Corporation is proud to support the gifted artists at the Clarence Brown Theatre and the talented folks in our company who help our customers do what they do best. Visit our website at stowerscat.com or call us at 865-546-1414 to learn how we're built to support the success of all the folks who make progress possible in this community.

BUILT FOR IT.

© 2014 Stowers Machinery Corporation. All rights reserved.
© 2014 Caterpillar. All rights reserved. CAT, CATERPILLAR, BUILT FOR IT, their respective logos, "Caterpillar Yellow," the "Power Edge" trade dress as well as corporate and product identity used herein, are trademarks of Caterpillar and may not be used without permission.

Stowers



THREE SISTERS

by **Gina Di Salvo**

We are living through a Chekhovian moment. In the past decade, American theatre has enjoyed a proliferation of Anton Chekhov (1860-1904), the playwright associated with Stanislavski's Moscow Art Theatre and the development of realism. Not only are the four great works – *The Seagull*, *Three Sisters*, *Uncle Vanya*, and *The Cherry Orchard* – making regular appearances on our stages, but also new versions of these plays are emerging with increasing frequency. Notable new works include Christopher Durang's *Vanya and Sonia and Masha and Spike* (2012), which riffs on the sibling relationships featured in Chekhov's works, and Aaron Posner's *Stupid F***ing Bird* (2013), an adaptation that is equal parts reverent and irreverent towards *The Seagull*. There are a few more laughs in the adaptations, but the stuff of these plays largely remains the same as the originals that premiered in Russia over a century ago: family, change, talk, inaction. Oh, and maybe a gun shot.

Beyond the current theatrical repertoire, we are living through a Chekhovian moment in another sense. Like the characters in *Three Sisters*, we are experiencing historical change. The nature of home, work, and local traditions seems to be shifting to something remarkably different than it was for generations past. Perhaps that shift has already occurred and we, like Olga, Masha, and Irina, don't know it yet, because it hasn't caught up to us personally. Or, perhaps, we realize it and, like Natasha, can work a dying social system to our advantage, niceties and noblesse oblige be damned.

Encircled by the audience on three sides of the stage, this production of *Three Sisters* in the Carousel Theatre reflects both the elegance

of Stanislavski's theatrical practice as well as the excruciating inaction of the Chekhovian oeuvre. At some point, a character will turn his or her back to you or another character will be temporarily occluded. This is by design. This sort of staging reflects the Fourth Wall style of performance developed at the Moscow Art Theatre. Stanislavski aimed to create a world on stage separate from our own but equally as real. Therefore, the family, guests, and servants don't always play to us as they reminisce, express fatigue, fall in love (and don't), drink vodka and tea, and occasionally pause to eavesdrop. The characters are carefully contained in their own world and we watch from ours.

Of course, observing the perfected inertia of the Prozorov sisters can be frustrating to witness. Why haven't they gone to Moscow yet? Why didn't they think of better marriage plans? And why doesn't anyone intervene when the plans are so clearly bad ones? The sisters' inaction likely drives our modern fascination with the seemingly antique problem of the ancestral home and their place in it. Olga, Masha, and Irina have quirks, go off topic, and don't always seem to be forwarding or even following the plot that will most impact their lives. Talking more about it won't solve their problems, but they do it nonetheless. They are like us in that way. Stanislavski, who came from elite stock, considered this situation to be tragic while Chekhov, the grandson of a former serf who completed medical school before becoming a full-time playwright, felt it was more comic. We are likely as equally divided on how to receive this play today.

THE ACTORS



NANCY DUCKLES

(Anfisa) a Knoxville resident for 22 years, Nancy is happy to be back on the Clarence Brown Theatre stage, where she was previously seen in *A Christmas Carol*, *A Streetcar Named Desire*, *Our Country's Good*, and *The Miracle Worker*.

She has performed throughout Knoxville with the WordPlayers (*Shadowlands*, *The Secret Garden*), the Actors Co-op (*Absurd Person Singular*), and Pellissippi State Community College (*The Tempest*; *Love, Loss and What I Wore*), as well as in Morristown, TN with Encore Theatrical Company (*Peter Pan*, *Hairspray*, *Follies*). Nancy has, through her own DuckEars Theatre Company, produced and acted in *The Heidi Chronicles*, *Wit*, and *Rabbit Hole*. Recent screen credits include the 2016 movie *No Pay, Nudity* (directed by Lee Wilkof) and this season of *Murder Comes to Town*. Nancy is a retired anesthesiologist and previously served on the CBT Advisory Board, but her most cherished roles are wife to Cameron and mother of Connor, Aidan and Delaney.



MIGUEL A. FAÑA

(Vasilii Vasilyevich Solyony) Miguel is happy to be back for his third season as an MFA Acting candidate at UT! He is an immigrant American from Boston, MA who was born in Santo Domingo, Dominican Republic. He graduated from

the University of Massachusetts with a double major in Music and Theatre. His roles at the Clarence Brown Theatre include "Commander William Harbison" in *South Pacific*; "Martius Andronicus" in *Titus Andronicus*; and "John Willard" in *The Crucible*. Regional productions include *Macbeth*, *Of Mice and Men*, and *Romeo and Juliet*. He is a proud member of SAG-AFTRA and would like to thank his mother, Yovanny Faña, for her support and Sue Osborne for supporting her!; his father, Miguel J. Faña Sr. for his love; and his little brother, Jean-Michael Faña for his humor! (Good luck in the Army!) Enjoy the show, Nasdarovje!



BRIAN GLIGOR

(Andrei Sergeyevich Prozorov) Based in New York City, Brian is returning to the Clarence Brown as a Teaching Artist this semester, teaching Graduate Movement for Actors at UT. Clarence Brown Theatre credits include:

South Pacific, *The 39 Steps*, *Titus Andronicus*, *The Threepenny Opera*, *A Midsummer Night's Dream*, *A Christmas Carol*, *Monty Python's Spamalot* and *Noises Off*. He also produced and performed the one-man-show *I Am My Own Wife* at the CBT's Carousel Theatre in 2015. Other theater credits include the National and Japan tours of *RENT*, and regional productions of *Altar Boyz*, *The Full Monty* and *Jesus Christ Superstar*. His film and television credits include: *All My Children*, *Guiding Light*, *One Life to Live*, and several independent features. Brian received his Master's degree from UT in 2016. He is a proud member of Actors' Equity and SAG-AFTRA. www.BrianGligor.com



CHRISTIAN GRAY

(Aleksander Ignatyevich Vershinin) happily makes his Clarence Brown debut. Chicago Theatre: Court Theatre, First Folio (Artistic Associate), Remy Bumppo, ShawChicago (Ensemble Member), Writers' Theatre,

20 others. Regional Theatre: Artists' Ensemble (IL), Cumberland County Playhouse (TN), Fort Worth Shakespeare (TX), Kentucky Repertory, Montana Shakespeare, Pennsylvania Stage Company. Film credits: *Day 1* (Skibo Films: multiple awards including Best Feature), *Plastic* (FPPI Films: Best Supporting Actor – 1 Award, 1 Nomination), *Reclamation* (NTG Productions), *Drifted* (Boomstick Films), *The Judas Run* (Sigasaly Entertainment). Television: *Chicago PD* (NBC), *The Blackwood Prophecies* (J&R Productions and Two 9 Productions). Commercial: Horseshoe Casino, Stein Garden and Gifts.

THE ACTORS



JULIUS GROSS

(Orderly) Born in Knoxville and raised in Greeneville, TN, Julius is eager to set a foot on stage for the first time with *Three Sisters*. He is entering his Sophomore year at the University of Tennessee, pursuing a degree in Electrical

Engineering. He has always yearned to be any part – big or small – of the theatrical creative process, and hopes this experience will usher in more creative opportunities. Drawing from personal life experience, he aspires to be the best darn "Orderly" money can buy.



EMILY KICKLIGHTER

(Olga Sergeyevna) is very grateful to begin her third and final year of MFA studies with this Chekhov classic. You may remember seeing her earlier this year as Patch in *The Busy Body: A Comedy* or Aouda in *Around the World in 80 Days*.

Also at the CBT: *The Crucible* (Ann Putnam), *A Christmas Carol* (Mrs. Cratchit), *South Pacific* (Lead Nurse). She was a company member at The Flea Theatre in NYC and the Professional Training Program at Actors Theatre of Louisville in KY. She couldn't survive without the love and support of her amazing husband and family.



JOSEPH McGRANAGHAN

(Nikolai Lvovich Tuzenbakh) is happy to be home in Knoxville, where he grew up on live theatre at the Clarence Brown. He was last seen here in the 2013 CBT production of *Noises Off*. New York credits include *Calderon's*

Two Dreams (La MaMa ETC and Magis Theatre), *The Balcony* (Remix) (Mabou Mines Resident Artist Workshop), *The Bald Soprano* (Hudson Warehouse), *Our God's Brother* (Storm Theatre), as well as new work with The Workshop Theatre Company, Prospect Theatre, and SITI Company.

Regionally: Baltimore Centerstage, a season in residence at Asolo Rep, Philadelphia's Lantern Theatre, Pittsburgh City Theatre, Quantum Theatre, Pittsburgh Irish and Classical Theatre, Chamber Theatre of Boston, Urbanite Theatre, Luna Stage, Centenary Stage Company, and others. Film and TV: *Hack My Life*, *The Lucky Six*, *Door to Door*, and *Eight Degrees in Suburbia*. Joseph received his MFA from the FSU/ Asolo Conservatory. He dedicates this show to his Wonder Woman wife, Lily, and newborn daughter, The Un-Swaddleable Ezri Joan. www.josephmcgranaghan.com.



CHARLOTTE MUNSON

(Natalya (*Natasha*) Ivanovna) CBT: Violet in *Violet*, Nellie Forbush in *South Pacific*, Miranda in *The Busy Body: A Comedy*, Catherine in *A Christmas Carol*, and Ensemble in *Around the World in 80 Days*. NYC:

Cinderella in *DISENCHANTED* (original cast), Wendy in *Princes Don't Live in Cyberland* (world premiere) and Sydney in *Hedge Fun* (Producer's Club). Regional: Elvira in *Blithe Spirit* (Cape May Stage), Lady of the Lake in *Spamalot* (Saint Michael's Playhouse), Christine in *Dirty Rotten Scoundrels* (New London Playhouse), Sophie in *Master Class* (Musical Theatre of CT) and Juliet in *Romeo & Juliet* (NE Shakespeare Ensemble), to name a few. Her play, *Look at Me* was nationally selected by the NHY Playwriting Festival and was produced at the Stella Adler theatre in LA. In 2015, she starred in a workshop of her play, *Dark Matter*, at the Arthur Seelen Theatre in NYC. She will fully produce and star in *Dark Matter* this spring in LA, thanks to the 2017 Thomas Fellowship. Graduate of Emerson College, BFA Musical Theatre. Third year MFA Acting candidate at UTK. www.charlottemunson.com

THE ACTORS



RODERICK PEEPLES

(Ivan Romanovich Chebutykin) is based in Chicago, and most recently played Fezziwig and the Ghost of Christmas Present in last season's *A Christmas Carol*, Judge Danforth in *The Crucible*, and David Nathan Bright in *The Open Hand* in

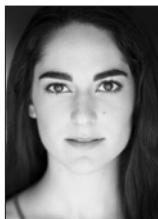
spring 2016. Previously at CBT he was in *The Threepenny Opera*, *Amadeus*, and played the title role in *Life of Galileo*. In Chicago: Many roles at Chicago Shakespeare, Goodman, Steppenwolf, Remy Bumppo, Victory Gardens, Famous Door, Court, and Next theatres. A Joseph Jefferson Award for *Dealers Choice* (Roadworks), and a Joseph Jefferson Citation for *Orphans* (CT20 Ensemble). Regional: Many shows with Utah Shakespeare Festival, Syracuse Stage, Madison Repertory, and Illinois Shakespeare Festival. Film: Robert Altman's *The Company*, *Road to Perdition*, *Novocaine*, *The Hudsucker Proxy*. TV: *Chicago Med*, *Prison Break*, *ER*, *Early Edition*, and the *Untouchables* series (syndicated).



CELESTE PELLETIER

(Maid) is ecstatic to make her Clarence Brown Theatre debut in *Three Sisters*. In the past, you may have seen her in *Top Girls* as "Dull Gret/Kit/Shona", in *Horse Girls* as "Raven" or in *The Vagina Monologues*. She is currently

a sophomore pursuing a degree in Mechanical Engineering at the University of Tennessee and hopes to continue participating in the university's theatre department. She'd like to thank the director, Michael Fry, for this wonderful opportunity, Jen-Jen for always being on the other end of the phone, Annabeth Elizabeth and Tori for their ice cream, and her two biggest fans, mom and dad. Xox



LAUREN PENNLINE

(Irina Sergeyevna) a third year MFA Acting candidate, Lauren last performed with the CBT as various characters in *Around the World in Eighty Days*. For the CBT: *The Busy Body: A Comedy*, *A Christmas Carol*, *The Crucible*, *South*

Pacific, *Titus Andronicus*, *The Who's Tommy*, *Love's Labour's Lost*, *The Marriage of Bette and Boo*, *Guys and Dolls*, *The Life of Galileo*, Anouilh's *Antigone*. Off Broadway/National Tour: *Ivy and Bean the Musical* (Atlantic Theater Company) Off-Off Broadway: *The Thirteenth Commandment* (Libra Theater Company, NY Innovative Theater Award for Featured Actress), *Henry IV Parts One and Two*, *Much Ado About Nothing* (Smith Street Stage, NY Innovative Theater Award for Ensemble and Revival), *Twelfth Night* (Riverside Theater), *Trojan Women* (NY Stage and Film). Training: University of Tennessee, British American Drama Academy. Proud member of Actors' Equity. www.laurenpenndline.com



CARLÈNE POCHETTE

(Maria (*Masha*) Sergeyevna) Carlène Pochette, originally from the French Saint Martin island in the West Indies, is honored to return to the Clarence Brown Theatre for one of Chekhov's classics.

Now a third year MFA Acting

Candidate at UT, Carlène was recently seen at the Clarence Brown Theatre in *Around the World in 80 Days* ('17), *The Busy Body: A Comedy* ('17), *A Christmas Carol* ('16) as Christmas Past, *The Crucible* ('16) as "Tituba", *South Pacific* ('16), and *A Lesson Before Dying* ('16) as "Vivienne Baptiste." Prior to that, she has performed in many independent film and theatre productions in Philadelphia, including *Ruined*, *Under the Cherry Tree*, *The Piano Lesson*, *The Last Days of Judas Iscariot*, and *By the Way, Meet Vera Stark*. Carlène holds a B.A. from the University of Pennsylvania and is a proud union member of AEA. www.carlenepochette.com "Your heart is free, have the courage to follow it."

THE ACTORS



MADDIE POETA

(Maid) is an out-of-state senior this year at UT, majoring in both Public Relations and in Theatre. Her past credits at the CBT include *A Midsummer Night's Dream* (Changeling Child) and *Titus Andronicus* (Ensemble). She

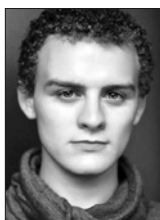
also was involved in various crew positions at the CBT. Maddie is very excited and grateful to be able to be a part of this production of *Three Sisters*. She would like to thank her family for their love and support. Pennsylvania is a little far away, but she knows they have her back. She would also like to express a huge thank you to the cast and crew!



BEN PRATT

(Vladimir Karlovich Roday) is deeply honored to be able to make his Carousel Theatre debut. Ben is a fifth-year student double majoring in Theatre and Communication Studies. He was last season in *This is Our Youth* (Warren),

and *Violet* (Vergil/Ensemble). Other CBT credits include: *South Pacific*, *Mr. Burns: A Post-Electric Play*, *The Threepenny Opera*, *A Christmas Carol*, and *The Trip to Bountiful*. Other credits include: *Chimes at Midnight*, *RENT*, *The Pillowman*, and *Much Ado About Nothing*. Ben is hoping to pursue a Linklater certification in voice and speech upon graduation.



EVAN PRICE

(Aleksei Petrovich Fedotik) Evan is a senior Theatre major at the University of Tennessee. Credits include Peter Cratchit from *A Christmas Carol* (Clarence Brown Theatre) Tobias from *Sweeney Todd* (Canon County

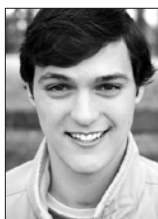
Playhouse) and Phantom from *Phantom of the Opera* (Tallahoma theatre). I would like to thank my mother for supporting me unconditionally.



ROBERT STEPHAN

(Ferapont Spiridonych) A graduate from the University of Tennessee with a BA in Theatre, Robert is honored to be making his return to the Clarence Brown stage since *Monty Python's Spamalot* (2014). *Three*

Sisters will mark his first performance in the Carousel Theatre. Robert is currently finishing the Master's and Teacher's Licensure program at Lincoln Memorial University with plans to graduate in December. He has been seen in other CBT productions such as *Sweeney Todd*, *A Christmas Carol*, and *Kiss Me, Kate*.



BEN TERPSTRA

(Orderly) is thrilled to be a part of his third CBT production! He is a Theatre major at the University of Tennessee and is grateful for the experiences and opportunities he has been afforded here. Previous

roles include Billy in *The Idiot Box* (All Campus Theatre), Perchik in *Fiddler on the Roof* (Oak Ridge Playhouse), Lt. Buzz Adams in *South Pacific*, and Christmas Future in *A Christmas Carol* (Clarence Brown Theatre). Ben also is a founding member of VOLT, UT's premiere co-ed a cappella group. Special thanks to Dan, Peggy, and always, Gracie.

CHRISTOPHER TRAMANTANA

THE ACTORS



(Fyodor Ilyich Kulygin) is thrilled to be back at The Clarence Brown Theatre. A New York based actor, Christopher is a proud alum of UT's graduate acting program. New York theatre credits include: *R&J&Z* (Hard Sparks), *Buddhas*

are Screaming In China (Planet Connections), *A People* (TerraNOVA), *Homeward Bound* (Greenlight Productions), *Playing House* (HERE), *Vera Laughed* (Playwrights Horizons), *Brokenbrow* (NYTW), and *Icarus Burns* (NYTW). Regional theater credits include: Next Act Theater, Milwaukee: *Back of the Throat*, *Bravo*, *Caruso*! CBT: *The Life of Galileo*, *Major Barbara*, *A Flea In Her Ear*, *King Lear*, *All My Sons*, *As You Like It*, *Guys and Dolls*, and *A Christmas Carol*. Christopher also teaches clown at NYU's Tisch School of the Arts. BA in Theatre: Fordham University at Lincoln Center; MFA in Acting: University of Tennessee, Knoxville. www.christophertramantana.com



The University of Tennessee, Knoxville is one of just 12 universities nationwide with its own professional LORT theatre. The Clarence Brown Theatre Company is a LORT D company and is fully integrated into the Department of Theatre's academic curriculum. Four of the six mainstage productions are produced on the LORT contract, allowing students the opportunity to work with seasoned professionals.

Founded in 1974 with Sir Anthony Quayle as Artistic Director, the Clarence Brown Theatre Company is one of the older companies in the LORT system. It has a distinguished history of hosting artists of national stature including Mary Martin, John Cullum, Zoe Caldwell, Carol Mayo Jenkins, David Keith, Dale Dickey, and Teresa Williams among others.

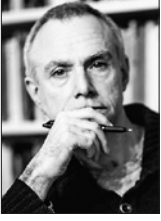
All Department of Theatre faculty have dual appointments with the professional company in their area of expertise. MFA Performance students may join the Clarence Brown Theatre Company in their third year of study. MFA Design students have the opportunity to work on LORT productions throughout their graduate training.

COMPANY MEMBERS

Producing Artistic Director: Calvin MacLean
Interim Managing Director: Thomas A. Cervone

Terry Silver-Alford
 David Brian Alley
 Bill Black
 Kate Buckley
 Marianne Custer
 Jed Diamond
 Gina Di Salvo
 Carol Mayo Jenkins
 Abigail Langham
 Patrick Lanczki
 Joe Payne
 Christopher Pickart
 Mike Ponder
 Casey Sams
 John Sipes
 Terry Weber
 Kenton Yeager
 Katy Wolfe

THE ARTISTS



MICHAEL FRY

(Director) was born and is still based in London. He has worked as director and writer at theatres including, in the UK, the Liverpool Everyman, Nottingham Playhouse, Mercury Colchester, Watermill

Newbury, Cambridge Theatre Company and for the Welsh National Opera and Glyndebourne. He was Arts Council Assistant Director at Chester Gateway and Arts Council Associate at the Nuffield, Southampton. Work in London includes the Young Vic, the Lyric Hammersmith, the Gate, Soho Theatre, the King's Head, the Royal Court and the National Theatre. Work abroad includes Ireland, Italy, France, Romania, Estonia, South Africa, China and frequently in the United States. His plays and adaptations have been performed in theatres throughout England, America and Australasia, and are published by Methuen (*Emma*), Samuel French (*Tess of the d'Urbervilles* and *The Great Gatsby*) and Oberon (*The Trumpet Major*). He has been artistic director of Floorboards Theatre Productions, Great Eastern Stage and Not the National Theatre, senior lecturer at Coventry, Middlesex and London Universities and Visiting Professor of Theatre at Washington and Webster Universities in the US. He has written frequent articles, chapters and theatre criticism, most recently on *Complicity for British Theatre Companies 1980-1994* (Methuen, 2015). He is currently Deputy Director of East 15 Acting School in London.

JELENA ANDZIC

(Scenic Designer) is a second-year Graduate Scenic Design candidate. This is her second design with the Clarence Brown Theatre. Her past professional experience includes a production of *Dear Yelena* (Belgrade Drama Theatre, Belgrade, Serbia) and many collaborations with FIST (Festival of International Theatre) both in Serbia and Romania. She has been honored with three awards – Second place in the scenic design competition at the Southeastern Theatre Conference (SETC) for *Top Girls*, the ULUPUDS (The Association of Artists and Designers in Serbia) award for her final undergraduate projects (Theatre, Film and TV Design) as well as an award (*Milenko Serban*) for Best Final Project in the field of Scenic Design.

BILL BLACK

(Costume Designer) has been designing, teaching and directing the production of costumes for the Clarence Brown Theatre and the University of Tennessee for 40 years. An active professional costume designer, his work is frequently seen around the country at theaters such as Alabama Shakespeare Festival, Cincinnati Playhouse in the Park, Denver Center Theatre Company, Milwaukee Repertory Theatre, Pioneer Theatre Company, PlayMakers Repertory Company, Skylight Opera Theatre, Roundhouse Theatre, and for 25 seasons at the Tony Award winning Utah Shakespeare Festival where he is the senior designer. Professor Black is Associate Head of the Department of Theatre and has held both the Paul Soper Professorship and the James R. Cox Professorship. He is a two-time winner of the John F. Kennedy medallion for his work with the American College Theatre Festival and a member of United Scenic Artists, Local 829.

THE ARTISTS

ALICE TRENT

(Lighting Designer) is a second year Lighting Design graduate student. She has previously designed *This Is Our Youth* and has acted as an assistant designer for *The Busy Body: A Comedy* and *Peter and the Starcatcher* with the Clarence Brown Theatre. She is a Cincinnati, OH native and has worked professionally at multiple theatre companies throughout the state of Ohio. She thanks you for coming to see our show!

MATTHEW TIBBS

(Sound Designer) is an assistant professor in the Department of Theatre and Dance at Ball State University. Recent work includes sound designs of *As You Like It*, *Romeo and Juliet*, and *Shakespeare in Love* at Utah Shakespeare Festival, *The Cay* at Indiana Repertory Theatre, and *Violet* here at the Clarence Brown Theatre. Matthew's nearly 100 sound designs have been seen on stages nationally, including New York City, Chicago, Washington D.C., Cincinnati, Salt Lake City, and Portland, Oregon. His film work has been seen at festivals nationally and internationally. Matthew often designs sound during the month of June for Great River Shakespeare Festival. Prior to his position at Ball State, he spent three years as Resident Sound Designer for Pioneer Theatre Company and as adjunct faculty at University of Utah. Michael has an MFA from the University of Cincinnati's College-Conservatory of Music (CCM) 2007 and a BA from George Fox University 2004.

SHELLY PACK PAYNE

(Stage Manager) Shelly is thrilled for the opportunity to stage manage for the Clarence Brown Theatre again. Previous productions at the CBT include *A Christmas Carol*, *Kiss Me, Kate*, *The Little Prince*, *Red*, and *Noises Off*. Other credits include Stage Management for The Egyptian Theatre Company (Park City, UT), Val A. Browning Center (Ogden, UT), Dominion Theatre (Virginia Beach, VA), Little Theatre of the Rockies (Greeley, CO), and the Pantagraph Holiday Spectacular (Bloomington, IL.) Other credits include, Company Manager for the Utah Shakespeare Festival and Director of Guest

Services for The Egyptian Theatre Company. She is a graduate of Weber State University and a member of Actors' Equity Association. Shelly would like to thank her wonderful husband Joe, and two beautiful children Amelia and Max for their unwavering support during this production.

CALVIN MacLEAN

(Producing Artistic Director) is in his twelfth year as Theatre Department Head and CBT Company Producing Artistic Director. CBT productions he has directed include: *A Flea in Her Ear*, *The Life of Galileo*, *The Secret Rapture*, *A Streetcar Named Desire* (with Dale Dickey), *Amadeus* (with the Knoxville Symphony Orchestra), *Kiss Me, Kate*, *Sweeney Todd* (with the Knoxville Symphony Orchestra and Dale Dickey), *Our Country's Good*, *The Threepenny Opera*, *The Open Hand* and last season's *The Crucible*. Cal was the Artistic Director of the Illinois Shakespeare Festival for eleven seasons. Professionally active in Chicago, his productions – mostly at the Famous Door Theatre – earned several Joseph Jefferson Awards for Outstanding Production and Direction. Most notable was Joshua Sobol's *Ghetto*, a production that ran for seven months and honored with four Jeff Awards including for Outstanding Direction of a Play. Cal is the Past President of the University/Resident Theatre Association and a member of the National Theatre Conference. He and his wife Rebecca are the proud parents of Sam and Rachael.

THOMAS A. CERVONE

(Interim Managing Director) is pleased and honored to be back at the theatre following a five-year hiatus, during which he served as Executive Director for both Dogwood Arts and the Historic Tennessee Theatre Foundation. Prior to that, Tom spent 23 years at the Clarence Brown Theatre, 17 of which as managing director (1995-2012). Throughout that time, he was very active within the UTK community, serving as Exempt Staff Council chair for many years, LGBT Commission co-chair, Diversity Council member, and participated in many other organizations/initiatives. He was the 2010 recipient of the

Chancellor's Citation for Outstanding Service to the University. Tom served on the Arts and Cultural Alliance of Greater Knoxville board for several years, and currently serves on the advisory boards of the College of Business at Maryville College, the WordPlayers, and the River and Rail Theatre Company. Most recently, he was appointed to the Foundation Board of West Liberty University, his alma mater. He is a proud and longtime member of the Actors' Equity Association. Tom holds his undergraduate degree in Speech and English Education with an emphasis in Theatre from West Liberty University in West Virginia and a Master of Fine Arts and an MBA from UT. He is a graduate of and was selected as the Class Representative of the Leadership Knoxville class of 2011. Recently, he was inducted into his undergraduate alma mater's Class of 2015 Wall of Honor.

"The Art of Real Estate"



Christian A. Merrill

MBA, RCS-D™, SRES,
ABR®, REALTOR®

"29+ years of Real Estate experience and the power of Realty Executives Associates to work for you today!"

10255 Kingston Pike • Knoxville, TN 37922
Bus: (865) 693-3232 • eFax: (865) 244-3657
Cell: (865) 414-6884
christian@christianmerrill.com
www.christianmerrill.com



Each Office Independently Owned & Operated.

STAY *Connected*



Leave a review of your theatre-going experience on Trip Advisor!



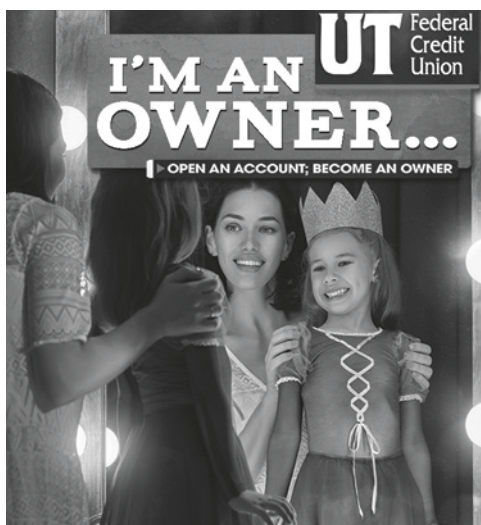
foursquare

CLARENCE BROWN THEATRE



@ CLARENCEBROWN

clarencbrowntheatre.com



FEEL LIKE THE STAR OF THE SHOW AT UT FEDERAL CREDIT UNION!

- Checking, Savings
- Mortgages, Equities
- Automobile loans
- Personal loans
- Share certificates
- HSAs, IRAs
- Safe deposit boxes
- Insurance products
- Full business suite
- ...and more!

UTFCU.ORG | (865) 971-1971

Federally insured by NCUA. Equal housing lender.

PRODUCTION CREW

MANAGEMENT

Assistant Director

Candace Moore

Stage Management Assistants

Collin Hall

Delaynie Rizer

Bonnie Valerio

COSTUMES

Wardrobe Supervisor

Elizabeth Aaron

Assistant Wardrobe Supervisor

Emory Humphrey

Wardrobe Crew

Hayden Hall

Kayleigh Howard

Emily Park

SCENERY

Deck Crew

Matthew Boshears

Alisa Harvey

Abigail Jones

LIGHTING

Assistant Lighting Designer

Bailee Boisclair

Production Electrician/

Light Board Operator

Kelly John Lambert

SOUND

Sound Board Operator

Andrew Shipman

SPECIAL THANKS

Recording Pianist

Brandon Scott Grayson



ENHANCED!

CLASSIC
PRINT CO.
WWW.CLASSICPRINTCO.COM

Screen Print, Embroidery, Ad Specialties, Cut & Sew
Small Shop, Big Results

CLIENTS

| | | | |
|-------------------------|------------------------|----------------------|------------|
| BARNEY'S of New York | Alpha Industries | Starbucks Coffee Co. | John Mayer |
| Atlantic Records | HGTV | DIY NETWORK | JTV |
| University of Tennessee | Clarence Brown Theatre | TOMBRAS GROUP | |
| | | ALCOA/ARCONIC | |

8373 Kingston Pike, Suite 3000
www.classicprintco.com 865-690-8466

CBT STAFF

LEADERSHIP

Producing Artistic Director - **Calvin MacLean**

Interim Managing Director -

Thomas A. Cervone

ADMINISTRATION

Marketing & Communications Director -

Robin Conklin

Business Manager - **Stephanie Wall**

General Management Associate -

Shelly Payne

Administrative Specialist - **Charlotte Holland**

Accounting Specialist - **Jill Baker**

External Relations Associate -

Amanda Middleton

Grants & Research Associate - **Hana Sherman**

Graphic Designer - **Julie Anna Summers**

IT Specialist - **Mark Spurlock**

PATRON SERVICES

Patron Services Manager - **Sarah Burton**

Assistant Patron Services Manager -

Morgan Moody

Lead House Manager - **David Ratliff**

Patron Service Associates - **Callie Bacon,**

Kelci Beavers, Rachel Britt,

Danielle Pressley, Ethan Roeder,

Meg Sutherland, Eric Thompson,

Lauren Whiteman and Kaleigh Witt

Archival Photographer - **Brynn Yeager**

OUTREACH/EDUCATION

Season for Youth, Tours, Workshops -

David Brian Alley

Summer Acting Workshops, Talk Backs -

Terry Silver-Alford

PRODUCTION

Production Manager - **Susan L. McMillan**

Production Stage Manager - **Patrick Lanczki**

Assistant to Production Manager/

Rentals Coordinator - **Ian Paul Messersmith**

COSTUMES

Costume Shop Manager - **Melissa Caldwell-Weddig**

Cutter/Draper - **Kyle Andrew Schellinger**

Costumers - **Elizabeth Aaron, Ellen Bebb,**

Mari DeCuir, Nevena Prodanovic

and **Amber Williams**

Costume Assistants - **Erin Reed**

Devin O'Neill, Laurel Tyree

ELECTRICS

Electrics Shop Manager - **Travis Gaboda**

Master Electrician - **Jon Mohrman**

Lighting Assistants - **Gracie Belt, Lisa Bernard,**

Bailee Boisclair, Sara Oldford, Hannah Simpson,

Alice Trent and Jordan Vera

SCENERY

Technical Director - **Don Conard**

Assistant Technical Director - **Jason Fogarty**

Master Carpenter - **Jerry D. Winkle**

Senior Carpenter - **Wes Smith**

Carpenter - **Will Lambert**

Carpenter Assistant - **Maggie Hobbs**

Scenic Charge Artist - **Jillie Eves**

Scenic Painters - **Jelena Andzic, Katie Moseley**

and **Cynthia Tipton**

PROPERTIES

Prop Shop Supervisor - **Christy Fogarty**

Lead Properties Artisan - **Sarah Gaboda**

Props Assistants - **Becca Johnson,**

Kathryn Nabors and Nevena Prodanovic

SOUND

Resident Sound Designer and

Sound Shop Supervisor - **Mike Ponder**

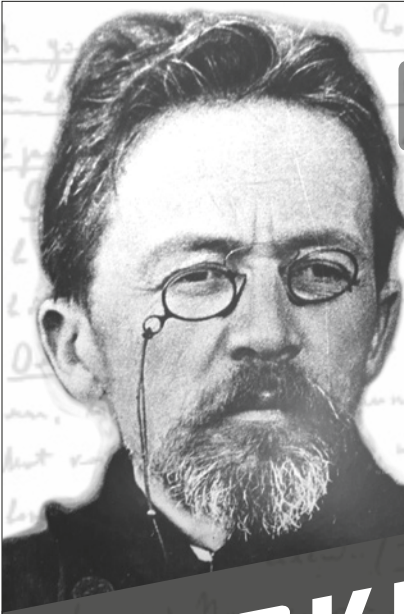


MAKE AN EVENING OF IT.



THE TENNESSEAN

531 Henley Street | Knoxville TN
thetennesseanhotel.com
865.232.180



OCTOBER 2017

UT AuthorFest
and the
Clarence Brown Theatre
present

CHEKHOVFEST

Celebrating the writing of Anton Chekhov

Join us throughout the month of October
for a celebration of the work of Anton Chekhov
– featuring Plays, Stories, and Discussions.

For more information, go to
mfll.utk.edu/chekhov

Sponsored by:

Department of Modern Foreign Languages and Literatures • Department of English • Department of Theatre
Clarence Brown Theatre • UT Humanities Center • Haines-Morris Endowment • UT-Ready for the World fund
Pellissippi State Community College • Knox County Public Libraries



F. E. TRAINER
CONSTRUCTION, INC.
 FINE HOMES
 REMODELS

Serving East Tennessee since 1998.

Aubrey's

REAL COMFORT. REAL FOOD. REAL GOOD.



OUR LOCATIONS

CEDAR BLUFF 865-691-0504
 LENOIR CITY 865-986-3113
 MARYVILLE 865-379-8800
 OAK RIDGE 865-685-0821
 PAPERMILL 865-588-1111
 POWELL 865-938-2724
 STRAWBERRY 865-465-7636
 PLAINS



It may be the fresh produce delivered to our back door. Or the coffee that's roasted in Maryville. Or an evening lit up with the conversation of good friends and family. Whatever the "best" part of your Aubrey's Meal, we can make one promise for sure. On the comfort scale, it'll be a 10.



www.aubreysrestaurants.com



Special thanks to
**TODDY'S
LIQUOR & WINE**
for their contribution
of spirits for our
2017/2018 Season.

*The personal touch with 41 years experience!
Why call anyone else?*



ASSOCIATES



Howard Grower, Broker

National Association of Realtors, Emeritus

Meridian Building

109 Northshore Drive ■ Suite 200 ■ Knoxville, TN 37919

Office 865.588.3232 ■ Fax 865.251.3232

Cell 865.705.0969 ■ hgrower@aol.com

www.HowardGrower.com

Independently Owned & Operated



Sales ■ Listings ■ Leasing & Management

PinnacleSM
FINANCIAL PARTNERS

supports the
Clarence Brown Theatre

pnfp.com

Distinctive Service. Effective Advice.



DEDICATED, *creative* EVENT PROFESSIONALS



*ONE FINE PERFORMANCE DESERVES ANOTHER.
CHEERS TO A GREAT SEASON!*

Bridgewater Place

33,000 SQUARE FEET OF DISTINCTIVE EVENT SPACE
PAIRED WITH FINE DINING.

205 BRIDGEWATER ROAD
KNOXVILLE, TENNESSEE 37923

Call us to schedule a tour 865.247.6071

AVAILABLE NOW AT YOUR COUNTY CLERK'S OFFICE
\$35

BACK THE ARTS WITH THE NEW ARTS PLATE



SUPPORT ARTS IN YOUR SCHOOLS AND COMMUNITY



No need to wait until your tags expire, you can change your license plate anytime. Fees will be prorated. For more information about specialty license plates, visit tn.gov/revenue/vehicle.



TENNESSEE
ARTS
COMMISSION
tn.gov/arts



tn4arts.org

CLAYTON CENTER FOR THE ARTS

on the campus of Maryville College

The Reduced Shakespeare Company
The Ultimate Christmas Show (abridged)
November 30, 2017 7:30 PM



"Christmas will never be the same once you share the holiday with the inspired lunacy of the masters of condensing the classics – the Reduced Shakespeare Company."

~ San Diego Theatre World



Tickets: 865-981-8590
claytonartscenter.com



ROTARY MAKING A DIFFERENCE

for more than 100 years

The Rotary Club of Knoxville is the oldest and largest service club in Knoxville with over 200 members. Rotary is a secular, non-political organization open to every race, creed, and culture. Our mission is to build goodwill, better understanding, and peace within our community and around the world, while encouraging the highest ethical standards in all vocations. The club provides annual college scholarships for area students, supports community and international humanitarian service projects in six countries, and sponsors Rotary International Scholars.

◆◆◆ AND DID YOU KNOW ◆◆◆

Rotary is the world's oldest and largest service organization for business and professional leaders.

There are 1.2+ million Rotary members in 35,000+ clubs in 200 countries around the world.

RCK members spearheaded the original campaign to create The Great Smoky Mountains National Park.

RCK has collaborated on humanitarian projects in Hungary, South Africa, Zimbabwe, India, Mauritania, & Thailand.

Back home, RCK provides annual arts education outreach grants to Clarence Brown Theatre, Knoxville Symphony Orchestra, Knoxville Opera and the Knoxville Museum of Art to help underprivileged children attend live performances and shows.

Worldwide, Rotary members have contributed over 1.5 BILLION dollars to help eradicate polio and have immunized more than 2 billion children in 122 countries.

*And after 103 years in Knoxville, we're just getting started!
To learn more, please visit our website at www.knoxvillerotary.org*



“...Supporting
and enriching
social, educational,
cultural and
economic life”

Clayton Foundation | **cf**

Supporting Community Dreams.

The Clayton Family Foundation | www.clayton.org



SchaadTM
companies

Mainstage Series

**2017/2018
SEASON
SPONSOR**

AUGUST 30 THRU SEPTEMBER 17



PETER
and the *Starcatcher*

A Play by Rick Elice

Based on the novel by Dave Barry and Ridley Pearson

Music by Wayne Barker



**NOVEMBER 22 THRU
DECEMBER 17**

Charles Dickens'

A Christmas Carol

Adapted by Edward Morgan and Joseph Hanreddy

Alabama Story

by Kenneth Jones



**JANUARY 31
THRU
FEBRUARY 18**

Southeast Premiere



URINETOWN
THE MUSICAL

Music and Lyrics by
Mark Hollmann

Book and Lyrics by
Greg Kotis

APRIL 18 thru MAY 6

www.schaadcompanies.com

CONCESSIONS OFFERINGS



Magpies Cookies { \$4

- 1 Chocolate Chip Cookies**
Classic recipe! — Pack of 2
- 2 Peanut Butter Cookies**
With chocolate chips — Pack of 2
- 3 Lemon Thumbprint Cookies**
Shortbread cookies with lemon icing — Pack of 3
- 4 Mini Oatmeal Cream Pies**
Two mini oatmeal cream pies with marshmallow icing



Knoxville Chocolate Company { \$4



- 1 Tennessee Walking Sticks**
Pretzel, pecans & caramel covered in milk or dark chocolate
- 2 Chocolate Covered Potato Chips**
Salty potato chips covered in milk or dark chocolate
- 3 Chocolate Covered Oreos**
Milk or dark chocolate — Pack of 2
- 4 Chocolate Covered Grahams**
Milk or dark chocolate — Pack of 2

Drinks \$2

- Coffee:** Regular, Decaf
Bottled Water*
Sodas: Coke, Diet Coke, Sprite,
 Dr. Pepper and Cherry Coke
Hot Chocolate
Hot Apple Cider
Hot Tea: Black, Green, Earl Grey

Snacks

\$2

- Chips:** Potato Chips, Pretzels and Sun Chips

\$1

- Granola Bars**
Fresh Fruit: Apple, Orange

MERCHANDISE

Travel Mug* \$7

Lidded mug that holds hot & cold beverages - Unlimited FREE refills!

Tumbler* \$5

Lidded cup with straw that holds cold beverages only - Refillable for \$2

Coffee Mug \$5

Ceramic souvenir coffee mug with CBT logo

Umbrella \$12

Black umbrella with wooden handle

T-Shirt \$10

Black or grey t-shirt with CBT logo

* Bottled water and official CBT merchandise with lids are the only items permitted inside the auditorium.

We are proud to support Knoxville's small businesses.

TENNESSEE THEATRE

THE OFFICIAL

State Theatre

of Tennessee



BROADWAY



CONCERTS



CLASSIC FILMS



AND MORE!

Join us at Knoxville's Grand Entertainment Palace



Experience the Unforgettable



TENNESSEETHEATRE.COM

604 S Gay St, Knoxville, TN 37902 | 865.684.1200 |



A FULL-SERVICE MEDIA PRODUCTION FACILITY



NEW FOR 2017, OUR STUDENT-LED PRODUCTION TEAM PROVIDES BOTH CAMPUS AND THE KNOXVILLE COMMUNITY WITH HIGH QUALITY VIDEO PRODUCTION, PHOTOGRAPHY, ANIMATION, GRAPHIC DESIGN, & POST PRODUCTION SERVICES.

Available Media Services:

- 15-30 second commercials
- Graphic/Visual art services
- 1-5 minute branded videos
- Event photo coverage

For more information call
865.974.5206
or visit us online:
www.utdailybeacon.com

CLARENCE BROWN THEATRE

at the University of Tennessee

Thank you to our most generous 2017/2018 sponsors.

CORPORATE SPONSORS



Schaad
companies

Mainstage Series



**Merchant
& Gould**
Guardians of Great Ideas®

Clayton Foundation | **cf**



PROSPERITY PARTNERS
WEALTH MANAGEMENT

UT Federal
Credit
Union
Your Community Credit Union

Stowers **CAT**

ROTARY CLUB OF KNOXVILLE

Aubrey's

FOUNDATIONS & GRANTS



**Knox County
Tourism Consortium**

Arts & Culture Alliance



**Mildred Haines and
William Elijah Morris
Lecture Endowment Fund**



MEDIA SPONSORS



2017/2018 Sponsors as of August 2017.



B97.5



/// YOUR LIFE, YOUR MUSIC ///



ADVISORY BOARD

2017.2018

Chair:

Lyle Irish

Immediate Past Chair:

Brooks Clark

Secretary:

LeAnne Dougherty

Treasurer:

Rachel Wedding McClelland

Ron Alexander
 Jenny Banner
 Charlie Brakebill
 Stuart Brotman
 Rick Carl
 Jeff Cheek
 Michelle D. Commander
 Joe De Fiore
 Steve Drevik
 Nazy Hashemian
 Amy Morris Hess
 Michael Higdon
 Julie Howard
 Tony Johnson
 Bob Lederer ♦
 Angela Masini
 Maureen Dunn McBride
 Margie Nichols
 John North
 William Pender
 Sara Phillips
 Whitney Ray-Dawson
 Todd Richesin
 Lee Riedinger
 Ingrid Ruffin
 Susan Sgarlat



Steve Smith
 Lamarr Stout
 Kay Stoutt
 Sandi Swilley
 Rosalyn Tillman
 Alice Torbett
 Joe Trahern ♦
 Peggy Turner
 Robin Turner ♦
 Georgiana Vines ♦
 Lacy Wallace
 Alexander Waters
 Melanie Wood
 Wendy Wortham ♦

Emeritus

Susan Farris
 Sheena McCall
 Townes Lavidge Osborn
 Bob Parrott*

Ex Officio

Calvin MacLean
 Thomas A. Cervone
 Andrew Sheehy
 Jan Simek

♦ Associate Board Members

*Deceased



Looking for
things to do?

go
knoxville

Turn to Go Knoxville
for a comprehensive guide

Every Friday inside the News Sentinel
and all the time at www.knoxville.com



WUTK FM 90.3 THE ROCK

**VOLUNTEER
RADIO**

Voted Knoxville's Best Radio Station 12 Years In a Row!

***Blank Newspaper* "Knoxville's Finest" 2015 - 2017**

***Knoxville Mercury* "Top Knox" 2015 & 2016**

***Metro Pulse* "Best of Knoxville" 2006-2014**


**ValueColleges.com "Sixth Best College Radio Station
in America" 2016**

- ★ **Modern Rock**
- ★ **Local Music**
- ★ **Specialty Shows**

***ROCKIN'
KNOXVILLE'S
EARS FOR OVER
35 YEARS!***

**WUTK is proud to be a media sponsor of
CBT's 2017-2018 season of amazing performances.**

**MAKE A TAX DEDUCTIBLE DONATION
to help keep listener supported WUTK
on the air at wutkradio.com!**

**On the Air and Streaming 24.7.365 WUTKRADIO.COM
or listen on your free  tunein app.**

FOLLOW US:   

Join Us!

Clarence Brown Theatre

SOCIETY

We believe in engaging with our community. Become a member of the CBT Society to help support our work. Members enjoy countless benefits, in addition to playing a vital role in our success. Go behind-the-scenes on exclusive CBTs tours, see the initial designs and costumes for a production at the first read-through, or join us on another memorable trip to the Big Apple.

The CBT Society acts as our annual fund and helps provide financial support for the CBT's programs and activities. Memberships are fully tax-deductible.

Benefits may include:

- ♦ VIP Parking (first come, first served)
- ♦ Invitation to the annual NYC Theatre Trip
- ♦ Exclusive backstage tours
- ♦ Invitations to first rehearsal read-throughs and design presentations
- ♦ Intimate dinner with the Artistic Director
- ♦ And more!

For more information, please contact:
cbtnsociety@utk.edu or **(865) 974.5654**

All CBT Society donations are fully tax-deductible.



*Want to double your impact with the **CBT** Society?*

Check with your employer to see if they have a **matching gift program** for donations to organizations like the CBT. Hear how easy it is from a current CBT Society member:

"I was thrilled to learn that I could double my gift to the CBT Society by requesting a matching gift from my employer! It was an easy process and one I will do each year going forward! Thankful to work for a company that values the arts and education and has a matching gift program!"

Companies that have participated in charitable gift matching with the CBT:

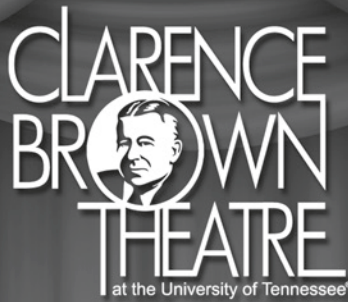


Merrill Lynch
Bank of America Corporation



REGIONS

Interested? Visit us at **clarencebrowntheatre.com/cbtnsociety** or call **(865) 974.5654**



**WBIR is a proud
supporter of the
performing arts and the
Clarence Brown Theatre.**





Bach or Basie?

Your music,
your choice.

*Your classical
and jazz station.*

91.9^{fm} WUOT

WUOT.ORG

A SERVICE OF THE UNIVERSITY OF TENNESSEE

Clarence Brown Theatre



For additional information or
to join, please contact us at
cbtnsociety@utk.edu or call
865.974.5654.

ARTISTS CIRCLE

President and Mrs. Joe DiPietro
Drs. Nancy Duckles
and Cameron Sears
Robert W. Lederer

Cynthia Moxley
and Alan Carmichael
Townes Lavidge Osborn
and Robert S. Marquis
Sara A. Phillips

Dr. Jan and Mary Ann Simek
Sandra K. Stoutt
and Dr. Howard Filston
Peggy and Ron Turner
Linda and Terry Tyler

PRODUCER CIRCLE

Paulette and Roy Aaron
Dr. Lynn and Georgia Blake
Dr. Peter and Sandra Campbell
Rick and Joanna Carl
Lisa Carroll
Dr. Jimmy and Ileen Cheek
Chris and Khristan Cimino
Brooks and Karen Clark
Drs. Jayne and Joe De Fiore
Drs. LeAnne and John Dougherty
Dr. Kent and Susan Farris
Wayne Gildroy
Rosemary Gilliam
Nazzy and Hash Hashemian
Amy Morris Hess
John and Haverly Hildreth

Julie Howard and Ted Flickinger
Jerry and Susan Kornegay
John and Maryann Larese
Dr. Theresa Lee
and Mr. Jacob Love
Mr. Mark Loudermilk
Dr. Angela Masini
and Mr. Terry Grove
Neil and Maureen Dunn McBride
Sheena McCall
Art and Marsha Mitchell
Joseph and Carol Pelliccia
Todd Richesin and Bobby Brown
Dr. Lee Riedinger
Robert and Diana Samples

Revs. Susan Sgarlat
and Charles Fels
Patsy Roux Sharp
Dr. Alan Solomon and
Mrs. Andrea Cartwright
Robin and Joe Ben Turner
Georgiana Vines
Nancy Sharp Voith
and Kenneth A. Stark
Lacy Wallace
Donna and Terry Wertz
Melanie and Tom Wood
Wendy and Dale Wortham

DIRECTOR CIRCLE

Hickory Construction
Drs. John and Terri Hopkins
Kaye Johnson

Dr. Patricia Mohr
Liz Stowers
Alice Torbett

Dr. Joseph Trahern, Jr.
and Mrs. Peggy Gates

RISING STAR

Misty Anderson
and John Tirro
Dr. Myrwood Besozzi
Dr. Larry and Jeanie Brakebill
Rob and Liz Britt
Gayle Burnett
John T. Bushore
and Betsy Haughton
Jeff and Marilyn Cheek
Annie and David Colquitt

Dr. David and Elizabeth Craig
Jane and Kenneth Creed
John and Patsy Ellis
Mrs. Kathryn Freeman
Stan and Alison Garner
Dr. Don and Carol Heiser
Lauren and Christopher Herbstritt
Drs. Tom and Ginger Hood
Lyle and Trish Irish
Doug McKamey

Margie Nichols and John Gill
Whitney Ray-Dawson
and Channing Dawson
Frances Scheidt
Donna Solod
Carol and Jeff Stratton
Ted and Linda Vallejos
Don and Fran Wheeler

LEADING PLAYER

Ron and Jean Alexander
Jeff and Laura Allen
Riley and Andrea Anderson
Stewart Anderson
Barbara Apking
and Jason Apking
David Brandes
John and Sandra Butler
Stuart Brotman
and Gloria Greenfield
Suzanne Carriere
Bonnie Carroll
and Roy Cooper, Jr.
Ken and Joan Clevenger
Dr. Michelle D. Commander
Maurizio Conti
and Pamela Schoenewaldt
James and Diane Crook
Drs. Reid and Olga Crumpton
Donald and Nancy Dunning
Dr. Curtis and Marcia Elam
Fred and Maribeth Ergen
Norm and Ursula Foreman
Ron and Sheila Fuchs
Glenn and Caroline Graber

Nancy J. Hays
Dennis and Kathy Hayward
John and Susan Hoffman
Richard and Ann Ince
Tony and Tonja Johnson
Louise Josephson
Adolf and Carol King
Dr. Jeffrey and Susan Kovac
Dr. Andrew and Dina Kramer
Don and Anne Loy
Kathryn Lynch
June Martin
Dr. Anne Mayhew
Kristen and Ryan McBee
John and Pam McGill
Sig and Brenda Mosko
Robert and Carolynne Moss
Dr. Samantha Murphy
and Dr. Justin Roby
John North
Ms. Meredith Peccolo
Rev. William and Sheri Pender
Carl and Peggy Pierce
Vladimir Protopopescu
John and Betsy Quinn

Randall and Donna Riggs
Tom and Carol Rosseel
Mr. Chadwick B. Self
Linda Shahinian
Dr. Steven M. Smith
and Mr. Donald Thorne
Sandi Swiley
Dr. Carol Tenopir
and Dr. Gerald Lundeen
Rosalyn and Sheadrick Tillman
Dr. Robert and
Mrs. Pamela Trigiano
Donna Dixon Tyrrel
Alexander Waters
Laura Webb and Mike Meares

List includes members who have joined
from **March 2017** through **August 2017**.

For corrections to your
acknowledgement name, please
contact Amanda Middleton at
amiddle5@utk.edu or call
865.974.5654.

Legacy Giving

The following donors have made a provision to provide support to the Clarence Brown Theatre. We gratefully appreciate their commitment of elevating the CBT to the level of family in their estate plans.

Mr. Charles F. Brakebill
Dr. Francis M. Gross
Ms. Sheena McCall

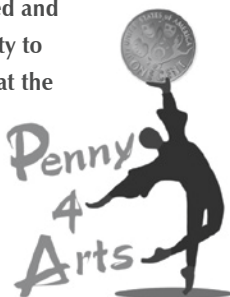
Ms. Sara A. Phillips
Ms. Kitty Ann Norton
Dr. Alan Solomon

Ms. Georgiana Fry Vines

With a little planning, you can leave your legacy by including a gift to Clarence Brown Theatre in your overall estate or financial plans. Learn the different gift options available to you at giftplanning.utk.edu or call the Office of Gift Planning at 865-974-2370.

The Arts & Culture Alliance thanks the Clarence Brown Theatre for participating in Penny Performances, giving every child in Knox County, including home-schooled and private-schooled students, an opportunity to attend arts and culture events/activities at the maximum cost of ONE PENNY when accompanied by an adult during the 2016/2017 academic school year.

PENNY4ARTS.COM



CBT *Artists Endowment*

The generosity of the contributors of the CBTS Artists Fund will help to sustain the vision of Clarence Brown into the future.

FOUNDING DONORS

| | | |
|---------------------------|----------------------------------|---------------------------------|
| Roy & Paulette Aaron | Calvin & Rebecca MacLean | Stuart & Kate Riggsby |
| Joyce & Charlie Brakebill | Sheena M. McCall | Elisabeth & William Rukeyser |
| Thomas A. Cervone | Townes Lavidge Osborn | Alan Solomon, MD |
| & Susan Creswell | Bob & Margie Parrott | Liz and Wes Stowers |
| Dr. Nancy E. Duckles | In Honor of Susan Deubel Becker, | David & Alice Torbett |
| Dr. Kent & Susan Farris | Professor Emerita, UTK, History | Dr. Ronald C. & Peggy E. Turner |
| Dr. Howard C. Filston | and Women's Studies | |
| & Sandra K. Stoutt | Professor Emeritus Dick Penner | |
| | & Professor Emerita Doris Ivie | |

CONTRIBUTORS

| | | |
|--------------------------------------|-------------------------------------|---------------------------------|
| Mr. Ronald L. Alexander | Mr. Nicholas G. Cazana | Mr. Joseph A. Fielden |
| & Mrs. Jean A. Alexander | & Mrs. Rebecca Cazana | & Mrs. Ruth Fielden |
| Mr. Steve H. Apking | Lauren F. Chiles, M.D. | Mr. John F. Fisher |
| & Mrs. Barbara B. Apking | Drs. Melissa and Walter Chiles, III | & Mrs. Sally A. Fisher |
| Mrs. Peggy C. Apple | Mr. & Mrs. Brooks Clark | Mr. Ted L. Flickinger, Jr. |
| Mr. Victor Henderson Ashe, II | Mr. Jon B. Clark | & Mrs. Julia S. Howard |
| Mrs. Fay B. Bailey | Mr. Philander P. Claxton, III | Mr. Martin K. Gerbman |
| Jack M. Barlow, Ph.D. | Mr. Bill L. Cobble | Ms. Coral Getino |
| & Mrs. Diane Humphreys-Barlow | & Mrs. Donna M. Cobble | Mr. Charles Giambrome |
| Mr. D. Stanley Barnes | Ms. Mary Costa | Ms. Rosemary R. Gilliam |
| & Mrs. Bettye K. Barnes | Coulter & Justus P.C. | Mr. Michael Allen Grider & Mrs. |
| Dr. Thomas C. Beeler | Covenant Health System, Inc. | Christine Renee Jessel Grider |
| & Mrs. Sherry Beeler | Ms. Jan Crawford | Dr. John D. Habel & |
| Mr. Ivan L. Beltz | Mr. Michael J. Criss | Dr. Dorothy Metzger Habel |
| & Mrs. Donna R. Davis | & Mrs. Katharine D. Pearson-Criss | Ms. Carla M. Hanlon |
| Mr. Bernard E. Bernstein | Mr. Thad S. Cox, Jr. | Mr. Steven D. Harb |
| & Mrs. Barbara W. Bernstein | & Mrs. Elizabeth M. Cox | & Mrs. Jane J. Harb |
| Judith Bible, | Mr. John C. Cullum | Mr. David J. Harrell |
| In honor of Georgiana Vines | Ms. Kim M. Davis | & Mrs. Lindsey N. Harrell |
| Mr. Jim Biggs | Mr. Channing Dawson | Mr. James A. Haslam, II |
| & Mrs. Catherine Chapman Biggs | & Mrs. Whitney Ray-Dawson | & Mrs. Natalie Leach Haslam |
| Dr. Lynn F. Blake | Dr. Joseph C. De Fiore, Jr. | Mr. Robert Heller |
| & Mrs. Georgia B. Blake | & Dr. Jayne C. De Fiore | Mr. Matthew P. Helms |
| Ms. Nan C. Bobbett | Lucinda Denton | & Mrs. Barbara C. Helms |
| Mr. Mark S. Bowling | Mr. Robert C. DeVault | Merrit and Joan Heminway |
| & Mrs. Karen May Bowling | & Mrs. Julia W. Watts | Prof. Amy Morris Hess |
| Mr. Fred H. Brackney | Larry & Kathy DeWine | Mr. Steven E. Hess |
| & Mrs. Susan P. Brackney | Mr. James E. Diamond | & Mrs. Stefanie Hess |
| Dr. Larry Charles Brakebill | & Ms. Maria Gillen | Hickory Construction |
| & Mrs. Jeanie Brakebill | Mr. John A. Dinkins | Mrs. Beth Howe-Christensen |
| Ms. Michelle Brewer | & Mrs. Sandra Dell Dinkins | & Mr. Rick Christensen |
| Martin & Loretta Brown | Dr. Joseph A. DiPietro | Ms. Sherri Gardner Howell |
| Dr. Mark W. Browne | & Mrs. Deborah S. DiPietro | Mr. William W. Hurt |
| & Mrs. Kathi K. Browne | Dr. John Henry Dougherty, Jr. | & Mrs. Mary E. Hurt |
| Mr. David B. Byrd & Mr. Jeff Stanley | & Dr. LeAnne Dougherty | Mr. Lyle Dennis Irish |
| Ms. Angelyn Gettelfinger Campbell | Mr. E. Ely Driver | & Mrs. Patricia M. Irish |
| Mary and Roberth Campbell | & Mrs. Phyllis N. Driver | Carol Mayo Jenkins |
| Ms. Patricia Cappiello | Ms. Jeannie H. Dulaney | Mr. A. Richard Johnson |
| Mr. Robert R. Carl, II | Don & Nancy Dunning | & Ms. Mary Donnet Johnson |
| & Mrs. Joanna Carl | Ms. Dianne Durand | Ms. Barbara Johnson |
| Mr. J. Alan Carmichael | Ms. Charleene G. Edwards | Dr. Joseph E. Johnson & |
| & Mrs. Cynthia Moxley | Mr. Taylor Eighmy | Mrs. Patricia Pinckley Johnson |
| Mr. Jeffery L. Chapman | Mrs. Margaret F. Erickson | Ms. Kaye Johnson |
| & Mrs. Deborah B. Chapman | | |

Mr. Tony Johnson &
 Dr. Tonjanita Letitia Johnson
 Dr. Hendon Russell Johnston, Jr.
 & Mrs. Florence F. Johnston
 Ms. Debbie Jones
 Mr. Jimmy Joe Justice
 & Ms. Ginger W. Justice
 Dr. Martha Keel and Mr. Michael Keel
 Dr. Roy King & Mrs. Elisa C. King
 Knoxville Area Association
 of Realtors
 Knoxville News Sentinel
 Dr. William Culver Kouns
 & Mrs. Heidi Kouns
 Mr. Reid Lederer
 & Mrs. Allison Lederer
 Mr. Robert W. Lederer
 Dr. Theresa Lee & Mr. Jacob Love
 Dr. Lorayne W. Lester
 Mrs. Sandra P. Lucas
 Dr. Robert R. Madigan
 & Mrs. Brenda L. Madigan
 Martin & Company
 Mr. A. David Martin
 Angela Masini and Terry Grove
 Mr. Samuel Young Mayo
 Mr. Neil G. McBride
 & Mrs. Maureen Dunn McBride
 Ms. Sheena McCall
 Mr. Daniel F. McGehee
 Mrs. Wanda Carol McMahan
 Sen. James R. McNally, III
 & Mrs. Janice R. McNally
 Ms. Melinda Meador
 Mercy Health Partners
 Michael Messing & Joyce York
 Mr. Paul M. Miles
 & Mrs. Marion T. Miles
 Ms. Leena Miller
 Dr. Emerson J. Mounger
 & Mrs. Joanne R. Mounger
 Dr. John Muldowny
 & Ms. Elaine G. Breslaw
 Ms. Linda Mungeon
 Dr. William S. Muse, Jr.
 & Mrs. Geri Muse
 Mrs. John Neely, III
 Dr. Janet Elizabeth Nelson
 Mr. John D. North
 Anne Parks
 Mr. Robert E. Paylor
 Mr. Joseph Pelliccia
 & Mrs. Carol Pelliccia
 Rev. William Pender
 & Mrs. Sheri Pender
 Mr. Dwight V. Percy
 & Mrs. Teresa B. Percy
 Mrs. Carolyn J. Pettit
 Sara A. Phillips
 Phillips & Jordan, Incorporated
 Mr. H. Burke Pinnell
 & Mrs. Lezah Pinnell
 Mr. George Piper

& Mrs. Stephanie B. Piper
 Dr. Robert Eugene Porter
 Ms. LuAnne N. Prevost
 Mr. R. Trent Primm
 & Mrs. Anne Primm
 Dr. Jeffrey S. Queen
 Dr. Kenneth L. Raulston, Jr.
 & Mrs. Linda Pope Raulston
 Dr. Lee Riedinger
 Mr. & Mrs. Theotis Robinson
 Ms. Patricia Robledo
 Lisa Rottmann
 Mr. Robert F. Samples
 & Mrs. Diana C. Samples
 Ms. Susan Seagraves
 Mr. & Mrs. Andrew Edwin Seidler
 Mr. James S. Schaad
 & Ms. Jennifer S. Banner
 Revs. Susan Sgarlat & Charles Fels
 Patsy Roux Sharp
 Mr. Vance Robert Sherwood
 & Dr. Donna Joanne Sherwood
 Dr. David Silvermyr
 & Ms. Christina H. Selk
 Mrs. Betty J. Smith
 Mr. Fred L. Smith & Mrs. Gail Smith
 Dr. Steven M. Smith &
 Mr. Donald Eugene Thorne
 Dr. Alan Solomon
 & Mrs. Andrea Cartwright
 Mrs. Debbie H. Spelce
 Dr. John G. Stewart
 & Mrs. Nancy P. Stewart
 D. Lamarr Stout, Jr.
 & Mrs. Susie Stout
 Mrs. Sarah H. Stowers
 Mr. Mike Strickland
 & Ms. Allison Burchett
 Mr. Thomas Anthony Stubbs
 & Mrs. Rhonda E. Stubbs
 Mr. Tramell Tillman
 Mrs. Susan I. Tisdale
 Dr. Joseph B. Trahern, Jr.
 Trinity Benefit Advisors, Inc.
 Ms. Brittany Trondson
 Mr. Joe Ben Turner
 & Mrs. Robin C. Turner
 Mr. Milton A. Turner
 & Mrs. Mimi Browning Turner
 Dr. Ronald C. Turner
 & Mrs. Peggy E. Turner
 Mr. & Mrs. Terry B. Turner
 Trust Company of Knoxville
 Mr. Terry Glenn Tyler
 & Mrs. Linda Cannon Tyler
 UT Federal Credit Union
 Ms. Georgiana Fry Vines
 in memory of
 Anna Dougherty
 Ms. Georgiana Fry Vines
 in memory of Jean Ogle
 Nancy Sharp Voith
 and Capt. Kenneth A. Stark

Mrs. V. Lacy Smith Wallace
 Ms. Sharon M. Ward
 Mr. Alexander Oaks Waters
 Mr. & Mrs. Terry Weber
 Mr. & Mrs. Lew Weems
 Mr. Robert T. Wertz
 & Mrs. Donna Wertz,
 in honor of Dale Dickey
 Mr. Douglas G. White
 & Ms. Melissa White
 Willis North America, Inc.
 Ms. Jacqueline M. Wilson
 Dr. Michael O. Wirth
 & Mrs. Alice R. Wirth
 Mr. Thomas L. Wolf
 & Mrs. Konomi Wolf
 Melanie & Tom Wood
 Dr. Dale C. Wortham
 & Mrs. Wendy Worthan
 Mr. Fred E. Young, Jr.
 Ms. Nancy Young

In Memory of Allen Carroll:
 Jenny Banner and James Schaad
 Community Mediation Center
 Norma and Joseph Cook
 Bob and Ginna Mashburn
 Townes Osborn and Bob Marquis
 Wilford and Miranda Strutton
 William and Kathryn Thomas
 Joe Trahern and Peggy Gates
 Georgiana Vines
 Donna and Terry Wertz

**In Memory of
 Edith "Missy" Dickey:**
 Mrs. Nancy McCrary Burnett
 Katherine and Keith Crosthwaite
 Ms. Audrey A. Duncan
 Susan and Kent Farris
 Mr. and Mrs. James A. Haslam II
 Mrs. Norma K. Holmes
 Bob and Ginna Mashburn
 Mr. Michel McClamroch
 Carol Schmid
 Mrs. Julie Schriver
 Georgiana Vines
 Donna and Terry Wertz

In Memory of Bob Parrott:
 Jenny Banner and James Schaad
 BarberMcMurray architects LLC
 Mr. Charles Brakebill
 Jeff and Vicki Chapman
 Julie Howard and Ted Flickinger
 Nancy and David Goodson
 Townes Osborn and Bob Marquis
 Joe H. Sherlin
 Walt and Mary Penn Sherlin
 Keith and Judy Shope
 Judy and Andy Simon
 Georgiana Vines

CBTS *Scholarship Fund*

Established by the members of the CBTS to provide scholarships to outstanding UT Department of Theatre Students.

Ron & Jean Alexander
Brad and Jennifer Anders
Drs. Ilse Anderson
& Nicholas Potter
Riley & Andrea Anderson
Mr. Steve H. Apking
& Mrs. Barbara B. Apking
Dr. Paul G. Ashdown
& Mrs. Barbara Green Ashdown
Mr. Thomas A. Ballentine
& Mrs. Susan W. Ballentine
Jack M. Barlow, Ph.D.
& Mrs. Diane Humphreys-Barlow
Mr. Andrew Baum
In honor of Susan Deubel Becker,
Professor Emerita, UTK, History
and Women's Studies
Dr. Lynn F. Blake
& Mrs. Georgia Blake
Ms. Nan C. Bobbett
John & Kathy Bohstedt
Dr. Joseph Adrien M. Boulet
& Ms. Lucy Jane Kniseley
Dr. Leonard Brinkman, Jr.
& Mrs. Doris J. Brinkman
Drs. Mary Lynn & Gilbert Brown
Mr. John L. Butler, Sr.
& Mrs. Sandra K. Butler
Mr. David B. Byrd
& Mr. Jeff Stanley
Mr. Robert H. Cagle
Elizabeth Cantrell
Allen & Lisa Carroll
Jimmy & Ileen Cheek
Lori & Charles Chmielewski
Brooks & Karen Clark
Wayne & Sara Clatterbuck
Dr. Stephen & Jan Cobble
Catherine Crain
Channing Dawson
& Whitney Ray-Dawson
Drs. Joseph & Jayne De Fiore
Harold & Lucinda Denton
in honor of Carol Mayo Jenkins
Mr. Alfred Denny
Dr. Joseph A. DiPietro
& Mrs. Deborah S. DiPietro
Drs. LeAnne & John Dougherty
Trudy N. Dreyer
Drs. Nancy Duckles
& Cameron Sears
Mrs. Anne G. Dungan
Donald & Nancy Dunning
Judy & Leonard Gray
Dr. Samuel Grayson Eddy, Jr.
& Mrs. Judy Eddy

Mr. Greg W. Eichelman
& Mrs. Sarah S. Eichelman
Dr. R. Kent Farris
& Mrs. Susan A. Farris
Mr. Ted L. Flickinger, Jr.
& Mrs. Julia S. Howard
Kenneth & Dianne Foster
Michelle Fratus
Mark & Nan Gaylord
Dr. Reid R. Gerhardt
& Mrs. Nancy M. Gerhardt
Mr. David C. Giles
Patricia & Wallace Gillespie
Miss Margaret L. Goodman
Mr. & Mrs. J. Harold Greene
Ina Groves
Mrs. Janet S. Gurwitch
Mr. Melvyn L. Halbert
& Mrs. Edith C. Halbert
Nazzy & Hash Hashemian
Mr. Dennis F. Hayward
& Mrs. Kathleen B. Hayward
Dr. Charlotte J. Headrick,
In Honor of Jayne Morgan and
Donald Thorne
Mr. Merrit Heminway
& Mrs. Joan M. Heminway
Prof. Amy Morris Hess
Mr. Jackie T. Hill
Ms. Christian A. Holt
Lila Honaker
Ms. Betty E. Hubert
Richard & Janet Johnson
Thomas & Mary Lou Koepp
Miss Mary E. Kois
Phillip & Janet Lawson
Mr. Robert W. Lederer
Dr. Jan L. Lee
Drs. Joseph & Ellen Macek
Robert & Brenda Madigan
Norma & Lou Ann Magden
Drs. James & Julia Malia
Dr. Anne Mayhew
Neil & Maureen Dunn McBride
Gary M. McCown, DDS
Mr. Douglas McKamey
Ms. Amanda Brooke Middleton
Paul & Marion Miles
Ms. Leena Miller
Carole Mitchell
G. Frank Munger II
Mrs. John Neely, III
Townes Osborn & Bob Marquis
Mary Nelle Osborne
James & Cynthia Park
Bob & Margie Parrott

Mr. Edward R. Patrick
& Mrs. Corinne L. Patrick
Meredith Peccolo
Ms. Kelly Lynn Pepper
Deborah & Horace Phillips
Sara Phillips
Ms. Judith A. Poulson
Dr. John T. Purvis
& Mrs. Patricia L. Purvis
Dr. John J. Quinn
& Mrs. Betsy V. Quinn
Mr. Charles A. Reiss
Mr. Chuck Rothstein
Dr. David W. Schumann
& Mrs. Jane Schumann
Scripps Howard Foundation
Revs. Susan Sgarlat & Charles Fels
Anne Siddell
Ann T. Siewert
Mr. Harry Siler
Mrs. Betty J. Smith
Earl & Lois Ann Smith
Mr. Mark A. Smith
& Mrs. Jamie A. Smith
Rita Smith
Dr. Alan Solomon
& Mrs. Andrea Cartwright
Pat & Jim Stiegler
Sarah Jordan Stout,
In Honor of Lamarr Stout
Mrs. Sarah Stowers
Jeff & Carol Stratton
Patricia & Michael Swenor
Ms. Virginia Swingen
Tramell Tillman
Mrs. Alice J. Torbett
Dr. Joseph B. Trahern, Jr.
& Mrs. Peggy Gates
Ms. Phyllis M. Trusty
Mr. Joe Ben Turner
& Mrs. Robin C. Turner
Dr. Ronald C. Turner
& Mrs. Peggy Turner
Robert & Ann Underwood
Anthony & Lynn Venafro
Susan E. Vernick
Ms. Georgiana Fry Vines
Donna & Terry Wertz
Dr. Michael O. Wirth
& Mrs. Alice R. Wirth
Melanie & Tom Wood
Dr. Dale C. Wortham
& Mrs. Wendy Worthan
Steve & Deborah Zimo

CBT *Thank You*

Contributions listed below are from **March 2017** through **August 2017**. The CBT at the University of Tennessee gratefully acknowledges the support of all our donors.

**Joyce Brakebill
Theatre Scholarship**

*For Bachelor of Arts students
entering UT Knoxville*

Dr. Larry Charles Brakebill
& Mrs. Jeanie Brakebill

**Clarence and Marian Brown
Theatre Endowment**

*Provided by generous support from
the private estate of Clarence and
Marian Brown. Additional support by:*

**Clarence Brown Career
Development Award**

*Provided by the estate of
Clarence and Marian Brown, given to
outstanding second and third year
graduate students as they begin their
professional careers.*

**CBT Society Special
Event Sponsors**

*Generous support provided for
special events.*

James Brimer Scholarship

*Established with generous support
from James Brimer.*

Mr. James Newburn
Mr. Terry D. Silver-Alford

**Thomas A. Cervone Scholarship
in Graduate Acting**

*Established upon his retirement to
recognize Tom Cervone's service
as Managing Director
of the CBT.*

**Robert and Mary Neal Culver
Scholarship Endowment**

*Provided by generous support
from Mr. and Mrs. Culver, this
award is given to outstanding
undergraduate students
in theatre.*

**William Desmond Scholarship for
the Performing Arts Endowment**

*Award honoring William Desmond
given to an outstanding student in the
Department of Theatre.*

**Ula Love Doughty/Carousel
Theatre Endowment**

*Provided by generous support
from the private estate of
Mrs. Ula Love Doughty.*

**Emily Mahan Faust
Graduate Fellowship**

*Provided by the generous support
of the late Mr. Hugh Faust Jr. in
honor of his wife, this award is given
to outstanding graduate students.
Additional support given in memory
of Mrs. Emily Mahan Faust.*

**Ralph Frost Memorial
Scholarship Endowment**

*Award established by
Mrs. Wilma Maples honoring
Mr. Ralph Frost, given to
outstanding graduate students.*

Ms. Marianne Custer

Gift in Kind to the Theatre

*Gifts provided by generous
support for the Theatre.*

**Barbara E. Lederer Artists
Endowment**

*Established with generous support
from Robert W. Lederer. Given to
assist in funding resident and
guest artists.*

Rel & Wilma Maples Endowment

*Provided by generous support from
Mr. and Mrs. Rel Maples providing
support for faculty enrichment.*

Ellis Mays Theatre Endowment

*Scholarship fund honoring Ellis
Mays established by R. Carroll
King and others.*

**Townes Lavidge Osborn
Endowment**

*Generous support provided for the
CBT Society Artists Fund.*

**Stuart & Kate Riggsby
Resident Artist Faculty
Endowment**

*Generous support provided for
the CBT Society Artists Fund.*

**The Dan Owenby
Scholarship Fund**

In memory of Dan Owenby.

**Sara A. Phillips Artists
Endowment**

*Established with generous support
from Sara A. Phillips. Given to assist in
funding resident and guest artists.*

**Franklin Everett Robinson
Artists Endowment**

*Established with generous support
from Helen Ann Robinson. Given
to assist in funding resident and
guest artists.*

Seth M. Rowan Endowment

*In memory of Seth M. Rowan, this
fund provides support for design
work for special theatre projects for
undergraduate students.*

**Dr. & Mrs. David L. Shea
Award Endowment**

*Provided by generous support
from Dr. and Mrs. David L. Shea.
Given to outstanding theatre
students concentrating in
movement and dance.*

**Paul L. Soper
Professorship Fund**

*An award established by
Dr. & Mrs. Brent A. Soper and
Dr. & Mrs. Gordon K. Soper honoring
Paul L. Soper, given to outstanding
faculty members biennially.*

**Liz Stowers Theatre Scholarship
Endowment in Design**

*Established with generous support
from Liz and Wes Stowers to Theatre
Design students.*

CBT *Thank You*

UT Theatre Enrichment Fund

Generous support provided for the Theatre.

Patricia Aldridge
James Anderson
Jim and Pat Andrews
Dr. and Mrs. A. J. Baker
Jeff Becker
Amy Blakely
Catherine I. Brewer
Drs. Gilbert and Mary Lynn Brown
David Burcham
F. Michael Combs
Greg and Mitzi Congleton
Ms. Jennifer Corum
Gregory Craft
Mrs. Carol Cumesty
Ms. Ellen Davis
Karen Davis
Nancy DeCosta
Bruce Delaney
Alfred Denny
Lucinda Denton
Steve Drevik
John and Ann Duncan
David and Anne Dungan
Claire Eldridge
Margaret Emmett
Laura Eshbaugh
Cara Evans
Mary and Dean Farmer
Norm and Doris Featherston
Robert Fehr
Don Ferguson
Tracey Ford
Joel Forker
Rosemary and James Gartner
David and Barbara Gillespie
Judy and Leonard Gray
Sue Groves
Mary Ellen Haddox
Mr. and Mrs. Melvyn L. Halbert
Joy Harjo-Sapulpa
Patricia Hart
Gordon and Laurie Hendrich
John and Susan Hoffman
Christian Holt
Markus A. Iturriaga
Emily Jernigan
Harvey Kaufman
Earl Kennedy
Mary Anne Koltowich
Gregory C. Kraft

Brian Lapps
Suzanne Lenhart
Michael and Nancy Lofaro
Krista Lunsford
Bradley Lyle
Daniel McGehee
Sally McMillan
Mrs. Jean Mercer
Sandy Mitchell
Dr. Charles Morris IV
David Moses
Charles Mote
G. Frank Munger, II
Russell D. Myers
Ms. Kitty Ann Norton
Deborah Obenchain
Mrs. Julia Myers Olive
Damaris A. Olsen
Bonnie Ownley
Jane Palmer
John R. Peterson
Margie Pickens
James N. Proffitt, Jr.
Denise and Bruce Robertson
Mr. and Mrs. Ken Scarbro
Rachel and Trevor Sharpe
Jocelyn and Robert Shelton
Harry Siler
Hannah Simpson
Philip and Doris Sklad
Jamie and Mark Smith
Ron Solmonson
Dr. Eugene and Norma Spejewski
Linda Stebbins
Dana Stevens
John and Nancy Stewart
Ann R. Stubblefield
BJ Swinehart-Bialik
Douglas and Marilyn Toppins
Roger Travis
Mr. Clyde Vincent
Dr. and Mrs. Joseph A. Vrbka
David and Donna Walker
Shelley and Patrick White
Carole Willard
Beverly B. Wilson

W. David J. Torbett Artists Endowment

Established with generous support from Mrs. Alice Torbett. Given to assist in funding resident and guest artists.

Carl Vines, Jr. Award

Established by Georgiana Vines honoring Carl Vines, Jr., this award is given alternately to outstanding Department of English and Department of Theatre students.

James Gray Walls, Jr. Scholarship Endowment

Established with generous support.

Corporate, Foundation & Grant Support

Arts & Cultural Alliance
Arts & Heritage Fund
Aubrey's
City of Knoxville
Clayton Foundation
Humanities Tennessee
Knox County Tourism Consortium
Merchant & Gould
Mildred Haines and
William Elijah Morris Lecture
Endowment Fund
UT Outreach & Engagement
Incentive Grant
Pilot Flying J Corporation
Prosperity Partners
Wealth Management
Rotary Club of Knoxville
Schaad Companies
Shubert Foundation
Stowers Machinery Corporation
Tennessee Arts Commission -
Arts Builds Communities
UT Federal Credit Union

Call UT Arts & Sciences
Development at (865) 974-2365 to
donate to the programs of the CBT
and the UT Department of Theatre.

For corrections to your
acknowledgement name, please
contact Amanda Middleton at
amiddle5@utk.edu or call
(865) 974-5654.

An Exclusive CBT Subscriber Benefit:



Visit one of the restaurants listed on the night of your performance and show them your ticket to receive an exclusive offer.



10% Off the total bill.
aubreysrestaurants.com



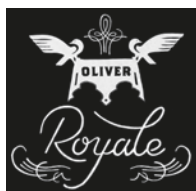
10% Off the total bill.
fieldhousesocial.com



15% Off the total bill.
*Knoxville location.
Limited to food only.*
meltingpot.com



10% Off the total bill.
sunspotrestaurant.com



**One complimentary
house made
macarons and
truffles dessert**
oliverroyale.com

Offer valid at participating restaurants and cannot be combined with any other discount or special offers.

Accessibility

We are dedicated to making the magic on our stages accessible to everyone. Below is a list of the accessibility services we offer. Additional accommodations can be made with at least 30 days notice.



AUTOMATIC DOORS: Powered doors are located on the South (Left) side of the Main Lobby at both the main entrance and at the disability access level for the CBT.



ACCESSIBLE RESTROOMS: Accessible restrooms are located in the main lobby of the Clarence Brown Theatre.



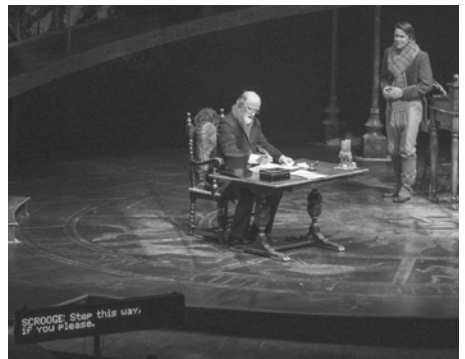
ACCESSIBLE SEATING: The CBT, Carousel, and Lab Theatres all feature wheelchair accessible seating. If you require accessible seating, call the Box Office **(865) 974-5161** and a ticket clerk will be happy to discuss our available options. If you would like additional assistance once at the theatre, please contact the House Manager **(865) 974-8287** at least 24 hours in advance.

Based on your individual needs and preferences, you may also elect to transfer to a theatre seat from a walker, wheelchair, or scooter. Due to fire codes, unoccupied walkers, wheelchairs, and scooters will be stored in the lobby by our House staff and can be returned to you by an usher at any time.



OPEN CAPTIONING is a text display of all of the words and sounds heard during a production — very similar to closed captioning on your TV. Whether you just miss a single word or you have hearing loss too severe to benefit from the use of assistive listening devices, Open Captioning can keep you from missing out. The first professional producing theatre in Tennessee to offer this service, the CBT brings this service to you free of charge.

Open Captioning will be available on the third Sunday matinee for each of our 2017/2018 productions. Please contact the Box Office for additional information at **(865) 974-5161**.



Jed Diamond and Geoffrey Scheer in *A Christmas Carol*, 2016; by Brynn Yeager

Supported in part by:

TCENTER ON DEAFNESS

Accessibility



ASSISTIVE LISTENING DEVICES:

The CBT Assistive Listening System features both headset-style and induction-loop Assistive Listening

Devices (ALDs). ALDs are available on a first-come, first-served basis, free of charge. For the Mainstage and Carousel, ALDs are available at the Concessions Stand. In the Lab Theatre, ALDs may be obtained from the Box Office in the Lab Lobby.



images courtesy of Listen Technologies



DEAF NIGHT AT THE THEATRE: This season we will offer two Deaf Nights at the Theatre:

A CHRISTMAS CAROL – Tuesday, December 5, 2017 at 7:30pm

ALABAMA STORY, Tuesday, February 13, 2018 at 7:30pm

These special events are produced through a partnership with UT's Center on Deafness and are designed to be fully accessible for members of the Deaf community. More than a dozen interpreters are stationed throughout the facility and two teams interpret the production. To order single tickets in the interpreted section seating, contact the Box Office **(865) 974-5161** or email **housemanager@utk.edu** as this is not available online.



Interpreters from UT's Center on Deafness at Deaf Night at the Theatre.

Sign interpreting also is available by request for all productions produced by the CBT. To request interpreting, please call the Box Office **(865) 974-8287** or email **box_office@utk.edu** at least 30 days before the performance you would like to attend. Requests with less than 30 days' notice may not be accommodated due to interpreter availability.

Visit **clarencelbrowntheatre.com/access** to learn more.

2017/2018 Corporate, Foundation & Grant *Profiles*

Schaad[™] companies ■ since 1910

Schaad Companies is a privately held real estate company owned by members of the John H. Schaad, Jr. family. Immigrating to East Tennessee from Switzerland in the late 1800's, the Schaads have been part of the Knoxville business community for more than a century and have embraced innovation as a means of sustaining their businesses. Since 2007, Schaad Companies has been an enthusiastic and loyal supporter of Clarence Brown Theatre's Mainstage productions. Schaad Companies believes the arts fuel creativity, stir the imagination, spur innovation, and move the world forward. The Clarence Brown Theatre offers the kind of work Schaad Companies wants to be associated with, work of the highest quality that brings sustained creative value to our community.

Pilot® **FLYING**

Headquartered in Knoxville, Tenn., Pilot Flying J's mission is to make life better for America's drivers. With more than 650 locations

nationwide, Pilot Flying J is the largest retail operator of travel centers in North America. At Pilot Flying J we believe it is essential to give back to the community. Our founder, Mr. James A. Haslam II, established our philanthropic spirit when he started the company in 1958. Our employees all take part in giving their time, talents and efforts to various organizations throughout the year. Together we work to make our communities better places to work, play and live. Visit www.pilotflyingj.com for more information.



Managed by the Arts & Culture Alliance of Greater Knoxville, the Arts & Heritage Fund raises money to support a wide range of arts organizations, historical sites, and cultural organizations throughout the area. The Arts & Heritage Fund

grants provide stable sources of financial support for the arts and heritage community; broaden access to high-quality arts and heritage experiences; and foster excellence in the local arts and heritage field and its administration.



Knoxville's roots run deep and strong. The city has served as the hub of the region since its founding in 1791. The best of its Appalachian heritage remains today — a strong work ethic, a family-centered community, and an intense respect for the natural beauty that envelopes the region. The metropolitan

Knoxville area was ranked the "best place to live in the United States and Canada" among cities with a population of fewer than 1 million. The ranking came from the Millennium edition of Places Rated Almanac. The results confirmed what most in this area have known for a long time - Knoxville is one of the best cities in the country!

2017/2018 Corporate, Foundation & Grant *Profiles*

Knox County Tourism Consortium



Tax Fund, the Consortium contracts with Knox County to present more than 4,200 visitor-focused events and activities throughout the year.

The Clarence Brown Theatre is a proud member of the Arts & Culture Alliance's Knox County Tourism Consortium, joining with 25 other art and heritage non-profits to attract and entertain more than 1.3 million people annually from countries as distant and diverse as Japan, New Zealand, the Russian Federation, Liberia, the Netherlands, and across South America. With support from the Hotel Motel



Humanities Tennessee nurtures the mutual respect and understanding essential to community by enabling Tennesseans to examine and critically reflect upon the narratives, traditions, beliefs, and ideas — as expressed through the arts and letters — that define us as individuals and participants in community life. Founded in 1973, Humanities Tennessee is a 501(c)(3) organization dedicated to promoting lifelong learning, civil discourse, and an appreciation of history, diversity, and community among Tennesseans. Our statewide programs include the annual Southern Festival of Books: A Celebration of the Written WordSM, the Appalachian and Tennessee Young Writers' Workshops, a variety of History & Culture programs, Grants & Awards for teachers and community organizations, Chapter16.org, and many more.

Mildred Haines and William Elijah Morris Lecture Endowment Fund

The Mildred Haines and William Elijah Morris Lecture Endowment supports campus visits of lecturers and scholars in all disciplines in the College of Arts and Sciences. The dean of the college solicits proposals from departments

and academic programs for the use of the funds, appoints an advisory committee to review and make recommendations regarding the proposals, and makes awards to the successful proposals. The advisory committee has a representative from the humanities, the social sciences, the natural sciences and the arts faculties of the college. The committee selects a chairperson from among its members. Committee members serve two-year terms and may be reappointed at the discretion of the dean.



When the Tennessee Arts Commission was created in 1967, it was given a special mandate by the General Assembly to stimulate and encourage the presentation of performing, visual and literary arts throughout the state and to encourage public interest in the cultural heritage of Tennessee. Through a variety of programs, the

Commission has encouraged excellence in artistic expression through the state's artists and arts organizations. That commitment has continued to expand through the years to ensure that the citizens of Tennessee have access to, and the opportunity to participate in the arts. These activities give Tennessee citizens a better quality of life, provide our children with a more complete education and attract tourists to our state.



There is no pain greater than losing a child.

Where words may fail, Precious Prints can give comfort. Led by students from the University of Tennessee College of Nursing, the project honors lives that have been lost.

Meet Volunteers who are making a difference at **volunteers.utk.edu**.

Volunteers

MAKE A DIFFERENCE



Fueling the arts and the audience.

Pilot Flying J is proud to support
the Clarence Brown Theatre's mission
to enrich the local culture and guide
the next generation of artists.





Protecting genius **everywhere.**

Providing legal solutions in
the areas of patents,
trademarks, copyrights,
trade secrets and litigation.



Guardians of Great Ideas.®

Knoxville Office: 865.380.5960

Atlanta | Denver | Madison | Minneapolis | New York
Silicon Valley | Washington, D.C. | www.merchantgould.com